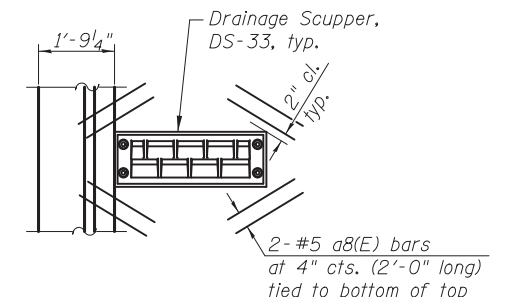


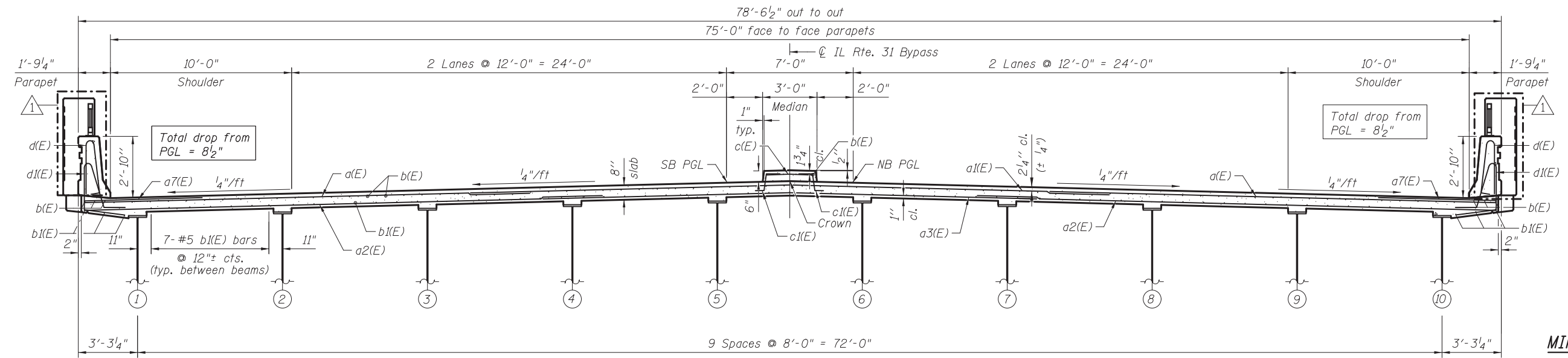
**PLAN**



**DETAIL "A"**

(Cut longitudinal reinforcement to clear drainage scuppers.)

**Notes:**  
 See Sheet SA10 for Bill of Materials, Bar Diagrams and Reinforcement Schedule.  
 Bars indicated thus 12 x 2-#5 etc. indicates 12 lines of bars with 2 lengths per line.  
 See sheet SA9 for Section A-A.  
 See sheet SA9 for Section Thru Parapet.  
 See sheet SA9 for parapet reinforcement.  
 See sheet SA17 for Drainage Scupper DS-33 details.  
 Dimensions are based on a Rolled Rail Strip Seal Joint. If the Contractor elects to use the Welded Rail Strip Seal Joint, deck dimensions may require adjustments to satisfy the details on sheet SA16.  
 Drains shall be located clear of all diaphragms.



**CROSS SECTION**

(Looking North)  
 (Drainage Scuppers not shown)

**MINIMUM BAR LAP**  
 (Deck)  
 #5 bar = 3'-3"  
 #6 bar = 3'-10"

10:34:59 AM I:\2154\cad\sheet\Roadway\20-Structures & Walls\01\_SN\_056-007T\056007T-60F72-08-SS\_rev2.dgn 5/21/2012

**CIVILTECH**  
 450 E Devon Ave, Suite 300  
 Itasca, Illinois 60143  
 Tel: 630.773.3900 Fax: 630.773.3975  
 www.civiltechinc.com

DRAWN - M. LANGE	REVISED - 5/4/12 K.L.B.
DESIGNED - D. ATKINS	REVISED -
CHECKED - G. HATLESTAD	REVISED -
DATE - 5/3/2012	REVISED -

**STATE OF ILLINOIS**  
**DEPARTMENT OF TRANSPORTATION**

**SUPERSTRUCTURE**  
**ILLINOIS ROUTE 31 OVER CRYSTAL CREEK**  
**STRUCTURE NO. 056-0077**

O.R. RTE. 0003	SECTION 18A-2	COUNTY MCHENRY	TOTAL SHEETS 825	SHEET NO. 468
CONTRACT NO. 60F72				
ILLINOIS FED. AID PROJECT				

SHEET NO. SA8 OF SA33 SHEETS