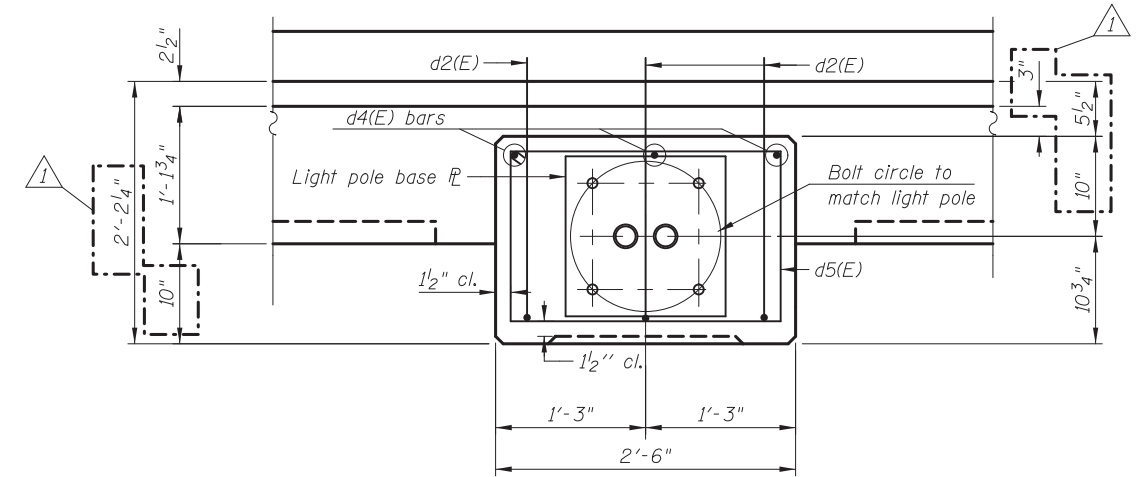
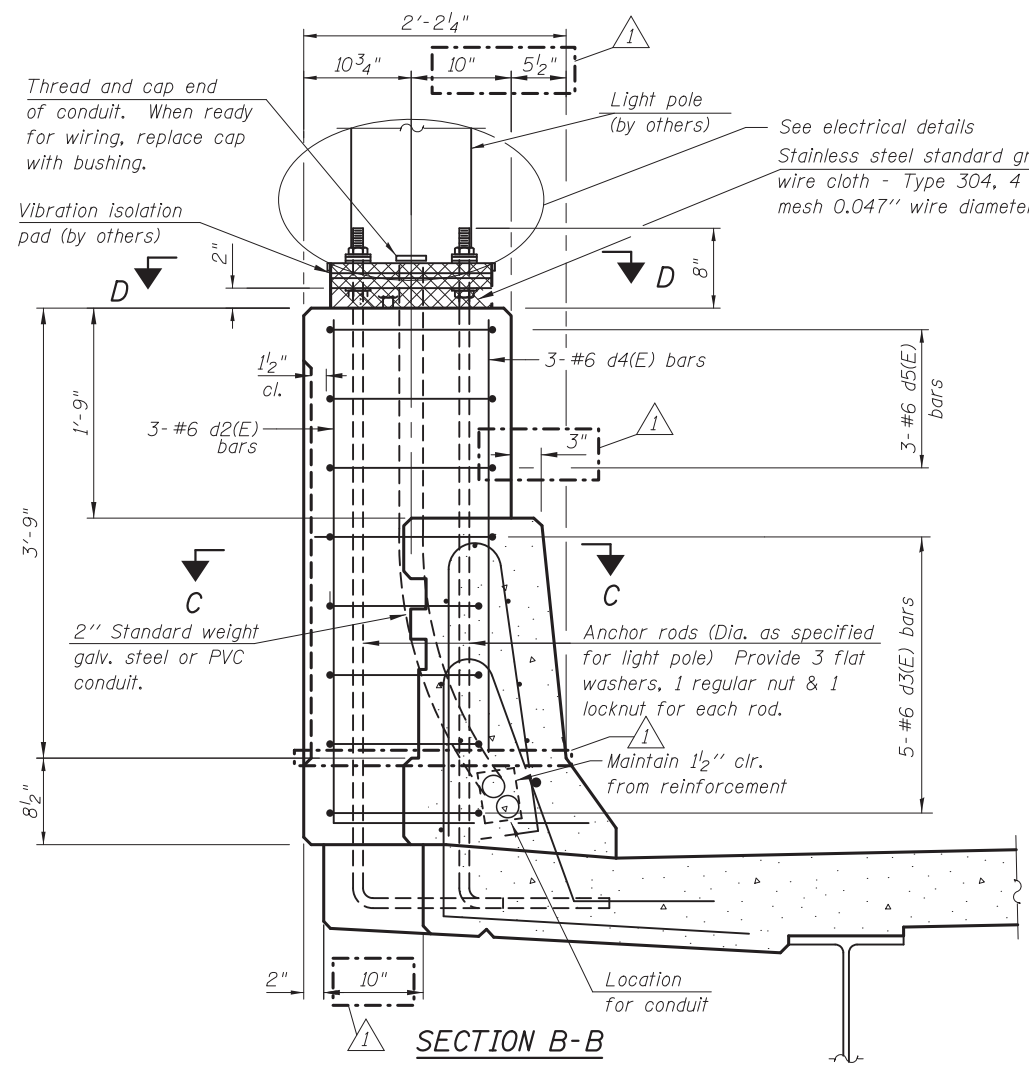


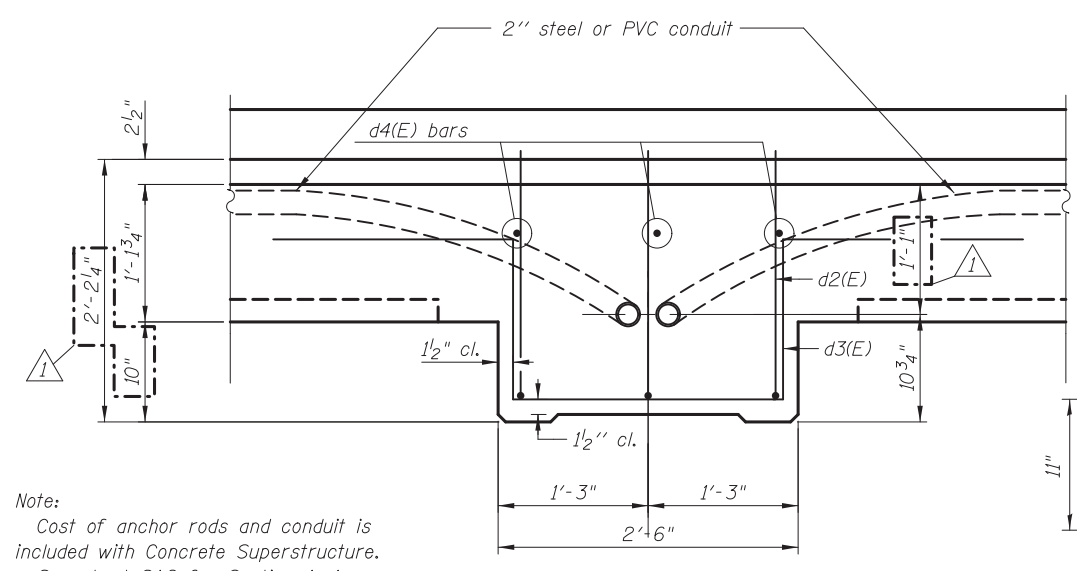
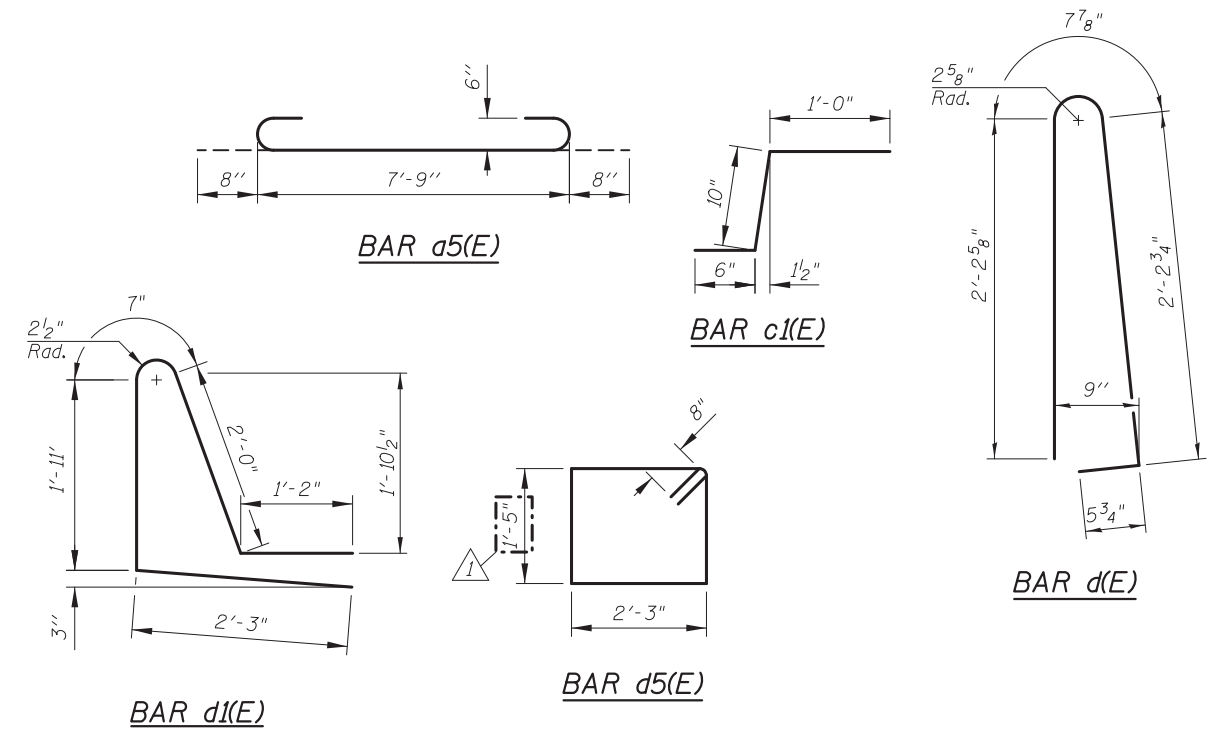
**SUPERSTRUCTURE
BILL OF MATERIAL**

Bar	No.	Size	Length	Shape
a(E)	590	#5	24'-7"	—
a1(E)	295	#5	35'-3"	—
a2(E)	360	#5	28'-7"	—
a3(E)	180	#5	27'-3"	—
a4(E)	24	#5	28'-4"	—
a5(E)	54	#6	9'-1"	—
a6(E)	6	#6	28'-9"	—
a7(E)	588	#6	6'-6"	—
a8(E)	16	#5	2'-0"	—
b(E)	510	#5	25'-3"	—
b1(E)	345	#5	29'-7"	—
c(E)	135	#5	2'-8"	—
c1(E)	270	#5	2'-4"	—
d(E)	296	#5	5'-7"	—
d1(E)	296	#5	7'-11"	—
d2(E)	18	#6	6'-2"	—
d3(E)	30	#6	8'-11"	—
d4(E)	18	#6	3'-5"	—
d5(E)	18	#6	3'-8"	—
e(E)	84	#4	19'-0"	—
e1(E)	6	#4	19'-2"	—
e2(E)	8	#4	18'-10"	—
e3(E)	10	#4	28'-7"	—
e4(E)	10	#8	31'-1"	—
x(E)	126	#5	6'-5"	—
Item	Unit	Quantity		
Concrete Superstructure	Cu. Yds.	322.5		
Bridge Deck Grooving	Sq. Yds.	1,082		
Protective Coat	Sq. Yds.	1,271		
Reinforcement Bars, Epoxy Coated	Pound	82,580		
Form Liner Textured Surface, Special	Sq. Ft.	353		

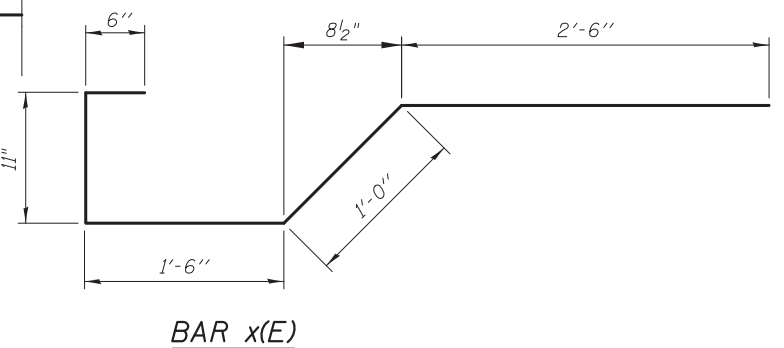
Bars indicated thus 1 x 3-#8 etc. indicates 1 line of bars with 3 lengths per line.



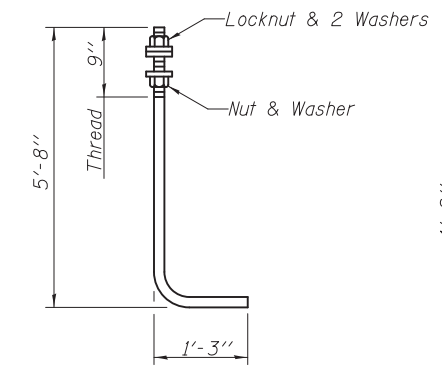
**VIEW D-D
LIGHT POLE FOUNDATION PLAN**



SECTION C-C

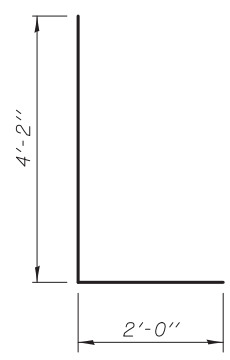


BAR x(E)

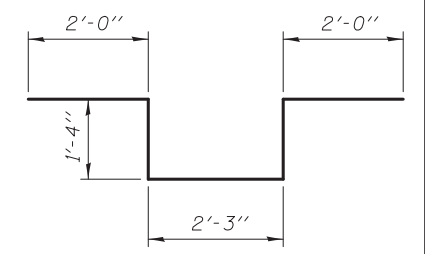


ANCHOR ROD

Diameter as specified for light poles. (ASTM F 1554 Grade 105)



BAR d2(E)



BAR d3(E)

Note:
Cost of anchor rods and conduit is included with Concrete Superstructure. See sheet SA9 for Section A-A.

10/31/00 AM 14:25:41 cad\sheet\Roadway\20-Structures & Walls\01.SN 056-007T\056007T-60F72-10-SSD_rev2.dgn