

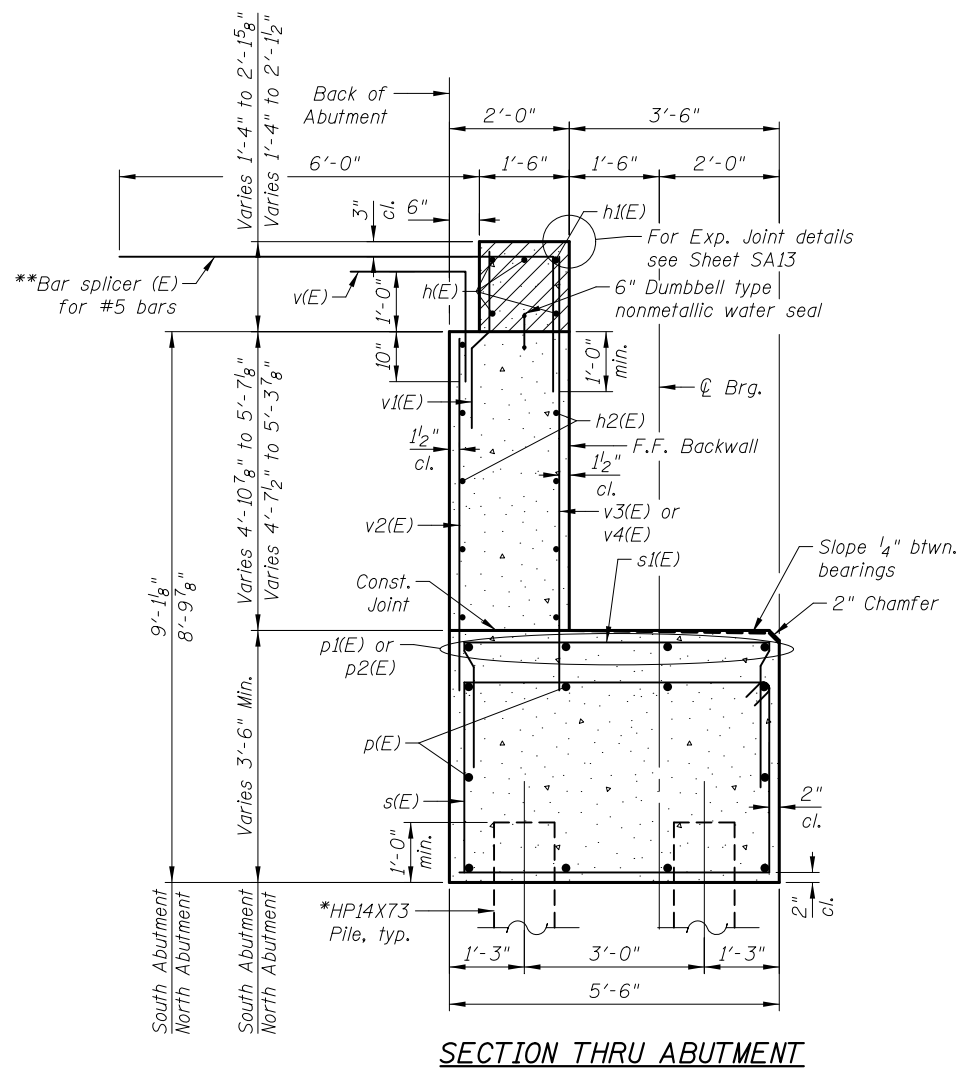
BILL OF MATERIAL

(For 2 Abutments)

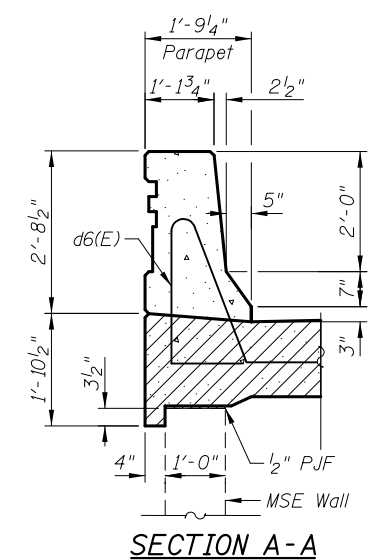
Bar	No.	Size	Length	Shape
b13(E)	8	#5	1'-3"	—
c(E)	4	#5	2'-8"	—
c1(E)	8	#5	2'-4"	└
d6(E)	8	#5	7'-11"	└
h(E)	24	#6	29'-2"	—
h1(E)	6	#5	28'-8"	—
h2(E)	66	#5	27'-8"	—
h3(E)	8	#4	1'-3"	—
h4(E)	8	#5	4'-7"	└
p(E)	60	#7	29'-2"	—
p1(E)	16	#5	18'-10"	—
p2(E)	8	#5	15'-9"	—
s(E)	176	#5	17'-7"	└
s1(E)	98	#4	9'-4"	└
u(E)	16	#6	12'-9"	└
v(E)	154	#5	3'-9"	└
v1(E)	154	#4	3'-9"	└
v2(E)	154	#4	6'-6"	└
v3(E)	77	#4	7'-11"	└
v4(E)	77	#4	7'-7"	└

ITEM	UNIT	QUANTITY
Concrete Structures	Cu. Yd.	177.4
Concrete Superstructure	Cu. Yd.	12.0
Bridge Deck Grooving	Sq. Yd.	25
Protective Coat	Sq. Yd.	25
Reinforcement Bars, Epoxy Coated	Pound	13,910
Furnishing Steel Piles HP 14x73	Foot	3,900
Driving Piles	Foot	3,900
Test Pile HP 14x73	Each	2
Pile Shoes	Each	52
Concrete Sealer	Sq. Ft.	1,307

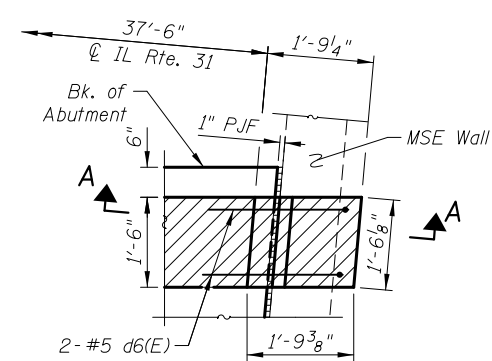
Bars indicated thus 4x3-#5 etc. indicates 4 lines of bars with 3 lengths per line.



SECTION THRU ABUTMENT

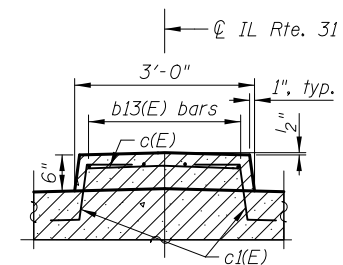


SECTION A-A

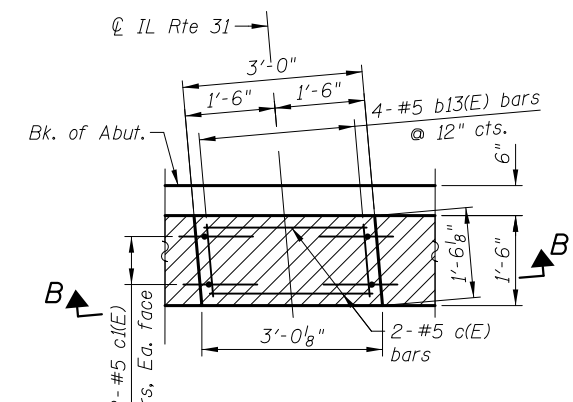


DETAIL "A"

(All Parapets are similar or mirror views)

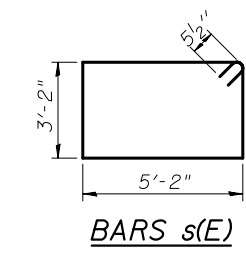


SECTION B-B

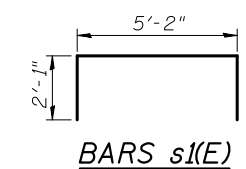


DETAIL "B"

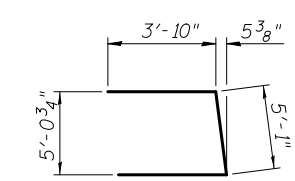
(S. Abut. shown, N. Abut. is mirror image)



BARS s(E)



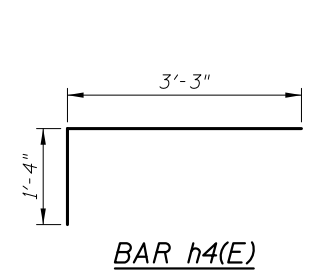
BARS s1(E)



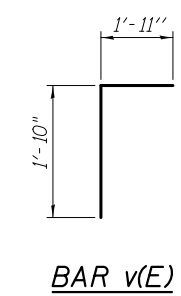
BAR u(E)

* Piles shall be driven prior to placement of the reinforced select fill and coated with coal tar epoxy from the bottom of the select fill to 1" above the base of the abutment. The cost of the coal tar epoxy coating shall be included with the cost of the Furnishing Piles.

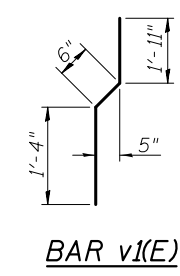
** Bar Splicers shall be parallel to the approach slab reinforcement.



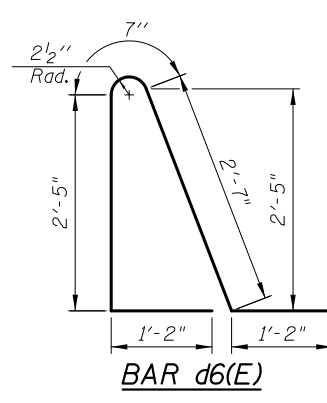
BAR h4(E)



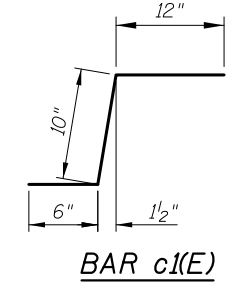
BAR v(E)



BAR v1(E)



BAR d6(E)



BAR c1(E)

Notes:
 Hatched area to be poured after superstructure false work has been removed. Quantity of concrete included with Concrete Superstructure.
 Parapet area to be poured with the approach slabs. Space reinforcement in cap to miss anchor bolts. Pour steps monolithically with cap.
 For Pile details see sheet SA24.
 For details of Bar Splicers see sheet SA29.
 Concrete Sealer shall be applied to the designated areas of the backwalls and bridge seats of the abutments.

5/2/2012 4:16:44 PM I:\2154\cad\sheet\Roadway\20-Structures & Walls\01.SN 056-007T\056007T-60F72-23-ABD.dgn

CIVILTECH
 450 E Devon Ave, Suite 300
 Itasca, Illinois 60143
 Tel: 630.773.3900 Fax: 630.773.3975
 www.civiltechinc.com

DRAWN	- M. LANGE	REVISED	-
DESIGNED	- D. ATKINS	REVISED	-
CHECKED	- G. HATLESTAD	REVISED	-
DATE	- 5/3/2012	REVISED	-

STATE OF ILLINOIS
DEPARTMENT OF TRANSPORTATION

ABUTMENT DETAILS
ILLINOIS ROUTE 31 OVER CRYSTAL CREEK
STRUCTURE NO. 056-0077

O.R. RTE.	SECTION	COUNTY	TOTAL SHEETS	SHEET NO.
0003	18A-2	MCHENRY	825	483
			CONTRACT NO. 60F72	
ILLINOIS FED. AID PROJECT				

SHEET NO. SA23 OF SA33 SHEETS