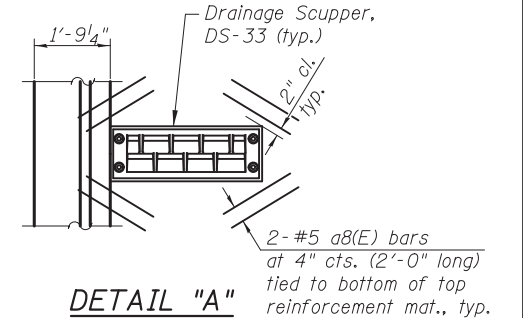


PLAN

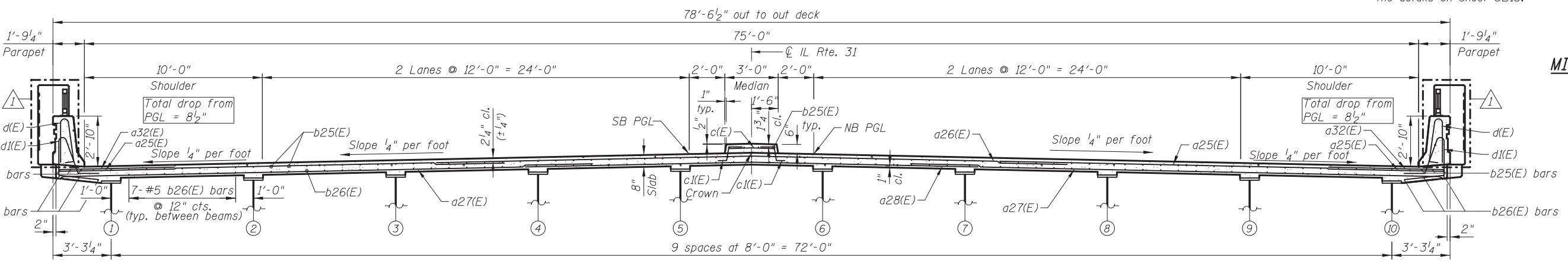
*Order a25(E), a27(E), a27(E), & a28(E) bars full length. Cut to fit skew and use remainder of bars in opposite end.



DETAIL "A"

Cut longitudinal reinforcement to clear drainage scuppers.

Notes:
 See sheet SB9 for Bill of Materials, Bar Diagrams and Reinforcement Schedule.
 Bars indicated thus 12 x 2-#5 etc. indicates 12 lines of bars with 2 lengths per line.
 See sheet SB8 for Section A-A.
 See sheet SB8 for Section Thru Parapet.
 See sheet SB16 for Drainage Scupper DS-33 details.
 See sheet SB1 for scupper locations.
 Dimensions are based on a Rolled Rail Strip Seal Joint. If the Contractor elects to use the Welded Rail Strip Seal Joint, deck dimensions may require adjustments to satisfy the details on sheet SB15.



CROSS SECTION
(Looking North)
(Drainage Scuppers not shown)

MINIMUM BAR LAP

(Deck)
 #5 bar = 3'-3"
 #6 bar = 3'-10"

10:50:40 AM 5/21/2012 I:\2154\cad\sheet\Roadway\20-Structures & Walls\02-SN 056-008\056008-60F72-07-SS_r.ev2.dgn

CIVILTECH
 450 E Devon Ave, Suite 300
 Itasca, Illinois 60143
 Tel: 630.773.3900 Fax: 630.773.3975
 www.civiltechinc.com

DRAWN	- M. LANGE	REVISED	- 5/4/12 K.L.B.
DESIGNED	- D. ATKINS	REVISED	-
CHECKED	- G. HATLESTAD	REVISED	-
DATE	- 5/3/2012	REVISED	-

STATE OF ILLINOIS
DEPARTMENT OF TRANSPORTATION

SUPERSTRUCTURE
ILLINOIS ROUTE 31 OVER ALGONQUIN ROAD
STRUCTURE NO. 056-0081

SHEET NO. SB7 OF SB32 SHEETS

O.R. RTE.	SECTION	COUNTY	TOTAL SHEETS	SHEET NO.
0003	18A-2	MCHENRY	825	500
CONTRACT NO. 60F72				
ILLINOIS FED. AID PROJECT				