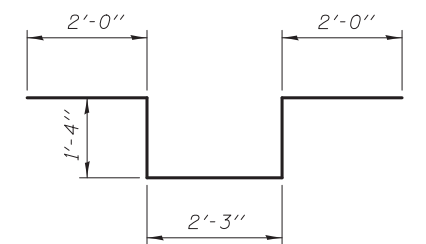
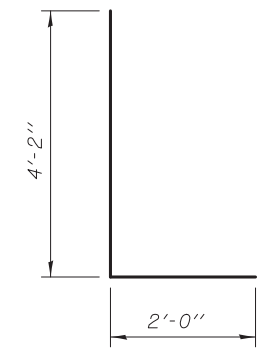
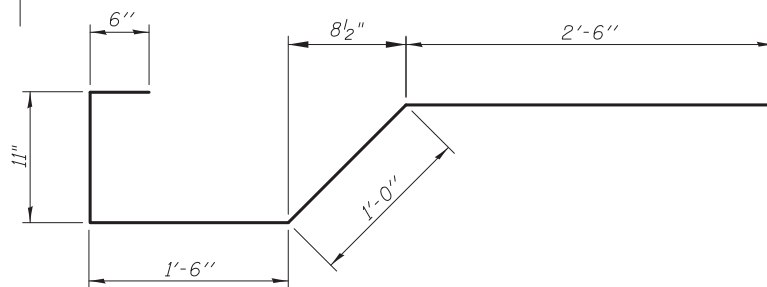
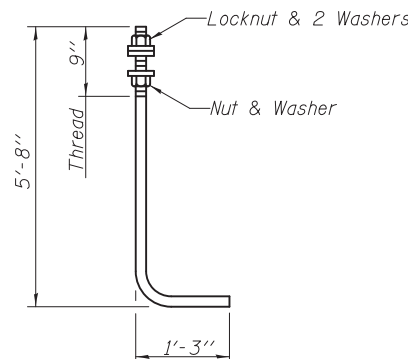
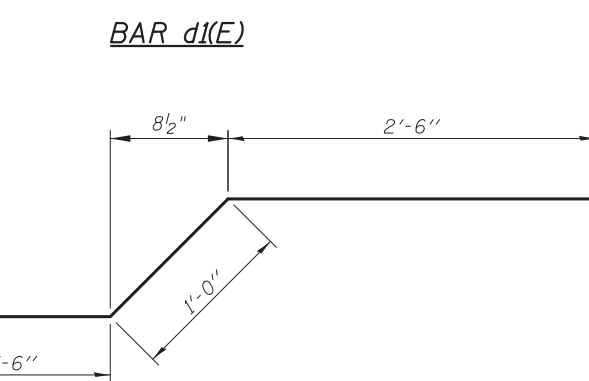
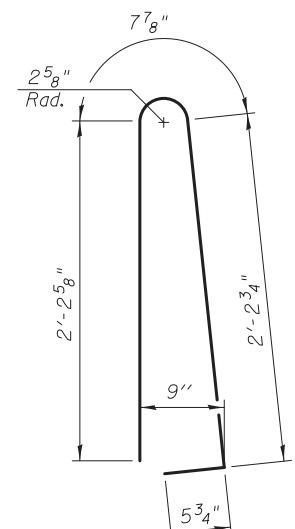
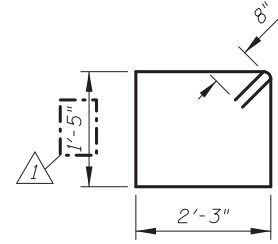
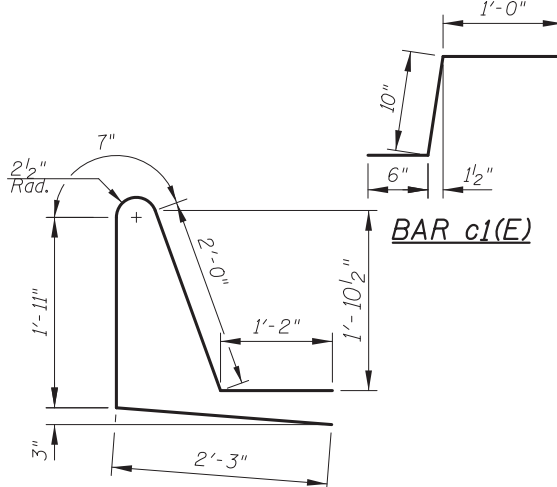
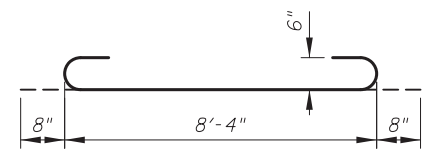
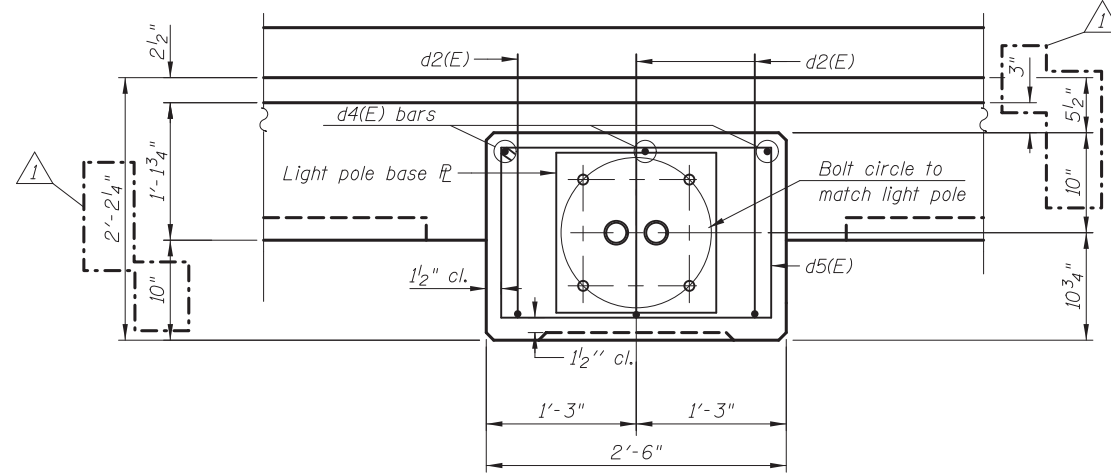
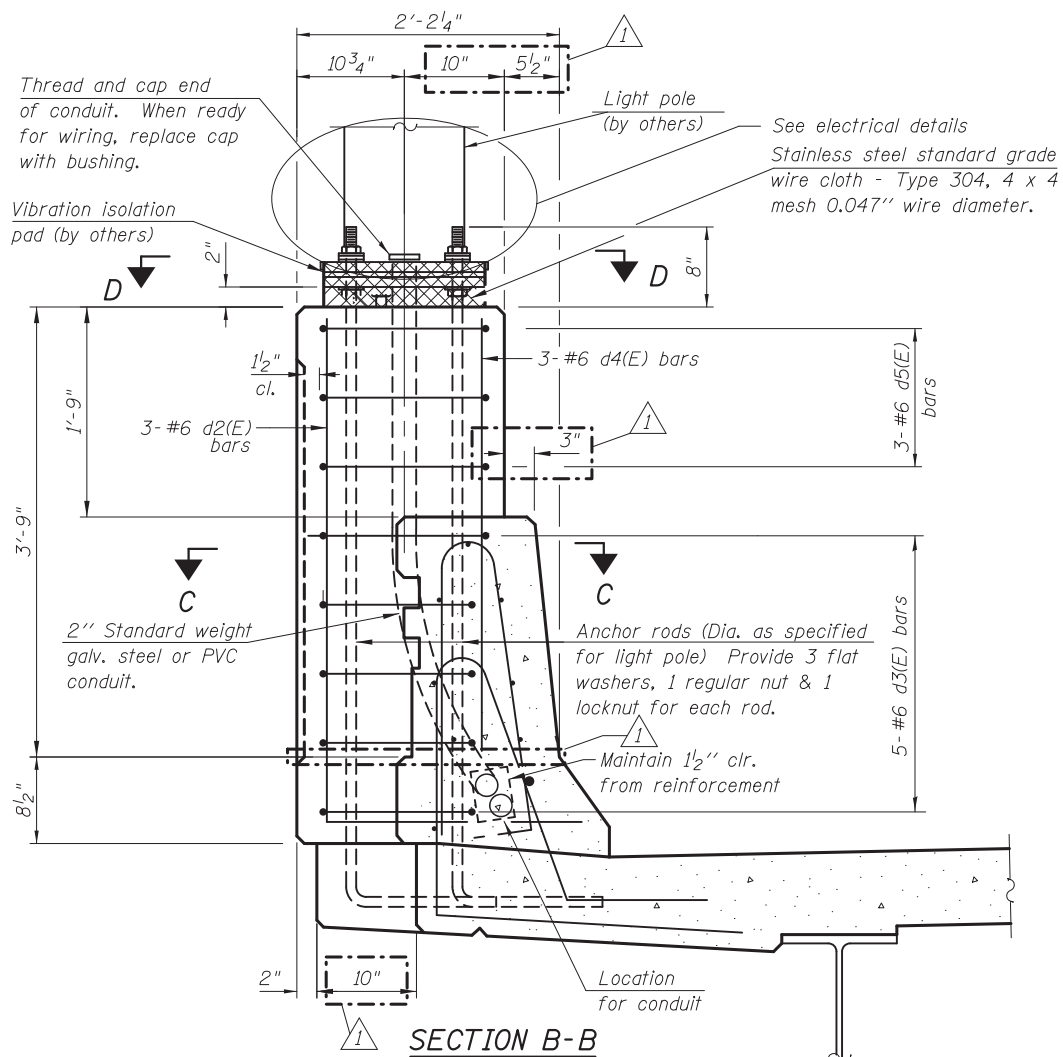


**SUPERSTRUCTURE
BILL OF MATERIAL**

Bar	No.	Size	Length	Shape
a8(E)	16	#5	2'-0"	—
a25(E)	648	#5	25'-0"	—
a26(E)	324	#5	34'-9"	—
a27(E)	398	#5	30'-0"	—
a28(E)	198	#5	24'-9"	—
a29(E)	24	#5	30'-2"	—
a30(E)	54	#6	9'-8"	—
a31(E)	6	#6	30'-7"	—
a32(E)	646	#6	6'-6"	—
b(E)	510	#5	27'-8"	—
b1(E)	483	#5	24'-2"	—
c(E)	150	#5	2'-6"	—
c1(E)	300	#5	2'-4"	—
d(E)	328	#5	5'-7"	—
d1(E)	328	#5	7'-11"	—
d2(E)	18	#6	6'-2"	—
d3(E)	30	#6	8'-11"	—
d4(E)	18	#6	3'-5"	—
d5(E)	18	#6	8'-8"	—
e25(E)	112	#4	16'-4"	—
e26(E)	12	#8	29'-3"	—
e27(E)	12	#4	26'-7"	—
e28(E)	6	#4	17'-0"	—
e29(E)	8	#4	15'-8"	—
x(E)	144	#5	6'-5"	—
Item	Unit	Quantity		
Concrete Superstructure	Cu. Yd.	358.2		
Bridge Deck Grooving	Sq. Yd.	1,199		
Protective Coat	Sq. Yd.	1,408		
Reinforcement Bars, Epoxy Coated	Pound	91,370		
Form Liner Texture Surface, Special	Sq. Ft.	392		

Bars indicated thus 1 x 3-#8 etc. indicates 1 line of bars with 3 lengths per line.



I:\2154\cad\sheet\Roadway\20-STR\Structures & Walls\02-SN_056-008\056008-60F72-09-SSD_rev2.dgn
 10:51:41 AM
 5/21/2012

Note:
Cost of anchor rods and conduit is included with Concrete Superstructure. See sheet SB8 for Section A-A.

CIVILTECH
 450 E Devon Ave, Suite 300
 Itasca, Illinois 60143
 Tel: 630.773.3900 Fax: 630.773.3975
 www.civiltechinc.com

DRAWN	- M. LANGE	REVISED	- 5/4/12 K.L.B.
DESIGNED	- D. ATKINS	REVISED	-
CHECKED	- G. HATLESTAD	REVISED	-
DATE	- 5/3/2012	REVISED	-

**STATE OF ILLINOIS
DEPARTMENT OF TRANSPORTATION**

**SUPERSTRUCTURE DETAILS II
ILLINOIS ROUTE 31 OVER ALGONQUIN ROAD
STRUCTURE NO. 056-0081**
 SHEET NO. SB9 OF SB32 SHEETS

O.R. RTE.	SECTION	COUNTY	TOTAL SHEETS	SHEET NO.
0003	18A-2	MCHENRY	825	502
CONTRACT NO. 60F72			ILLINOIS FED. AID PROJECT	