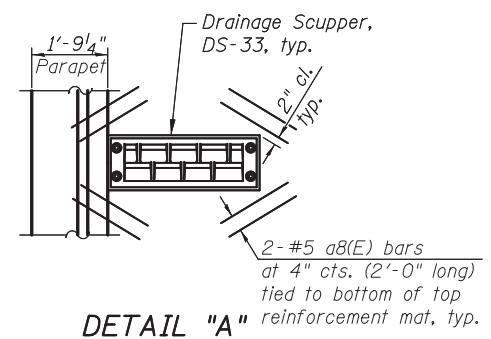
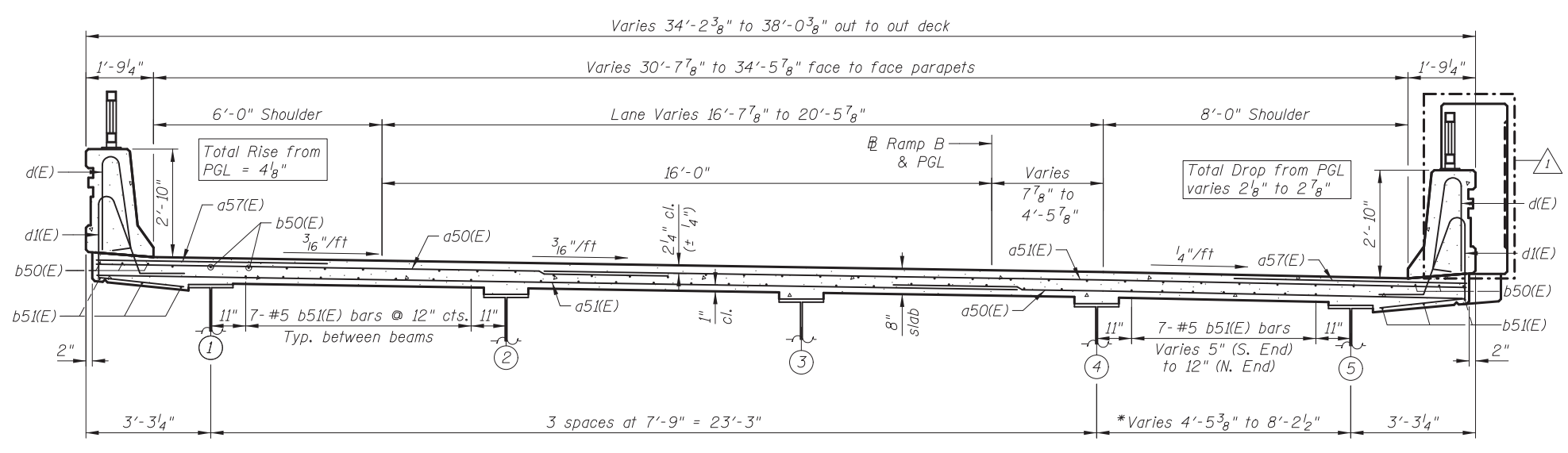


PLAN



DETAIL "A"

(Cut longitudinal reinforcement to clear drainage scuppers.)



CROSS SECTION

(Looking North)
(Drainage Scupper not shown)

* Measured at \bar{C} Bearings

Notes:
See Sheet SC9 for Bill of Materials, Bar Diagrams and Reinforcement Schedule.
Bars indicated thus 12 x 2-#5 etc. indicates 12 lines of bars with 2 lengths per line.
See sheet SC8 for Section A-A, Section Thru Parapet and parapet reinforcement.
See sheet SC16 for Drainage Scupper DS-33 details.
Dimensions are based on a Rolled Rail Strip Seal Joint. If the Contractor elects to use the Welded Rail Strip Seal Joint, deck dimensions may require adjustments to satisfy the details on sheet SC15.

MINIMUM BAR LAP

(Deck)
#5 bar = 3'-3"
#6 bar = 3'-10"

5/21/2012 11:24:01 AM I:\2154\cad\sheet\Roadway\20-Structures & Walls\04-SN_056-0079\0560079-60F72-07-SS_rev2.dgn

CIVILTECH
450 E Devon Ave, Suite 300
Itasca, Illinois 60143
Tel: 630.773.3900 Fax: 630.773.3975
www.civiltechinc.com

DRAWN	- M. LANGE	REVISED	- 5/3/12 K.L.B.
DESIGNED	- D. ATKINS	REVISED	-
CHECKED	- G. HATLESTAD	REVISED	-
DATE	- 5/3/2012	REVISED	-

STATE OF ILLINOIS
DEPARTMENT OF TRANSPORTATION

SUPERSTRUCTURE
NB EXIT RAMP (RAMP B) OVER CRYSTAL CREEK
STRUCTURE NO. 056-0079

O.R. RTE.	SECTION	COUNTY	TOTAL SHEETS	SHEET NO.
0003	18A-2	MCHENRY	825	532
CONTRACT NO. 60F72				
ILLINOIS FED. AID PROJECT				

SHEET NO. SC7 OF SC29 SHEETS