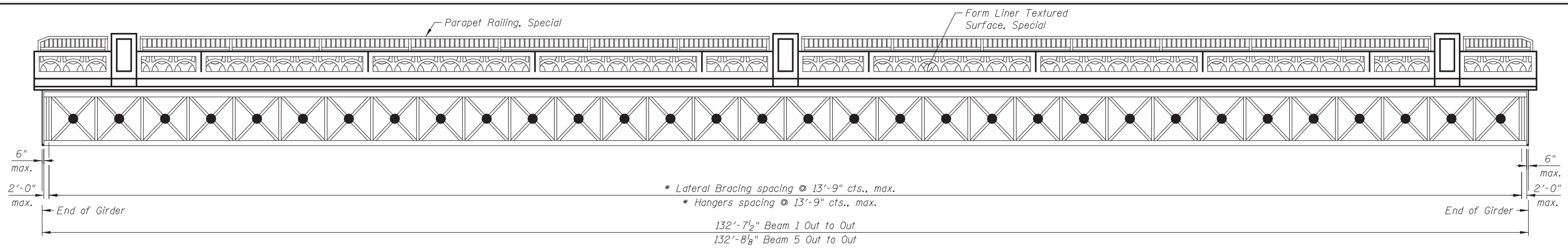
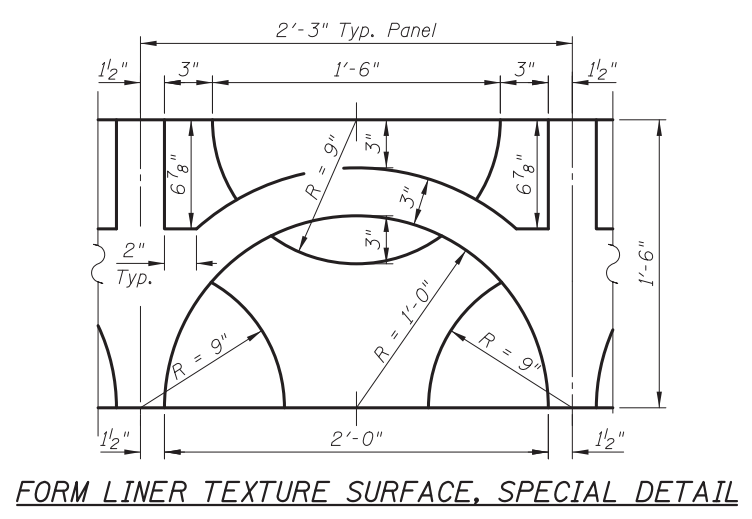
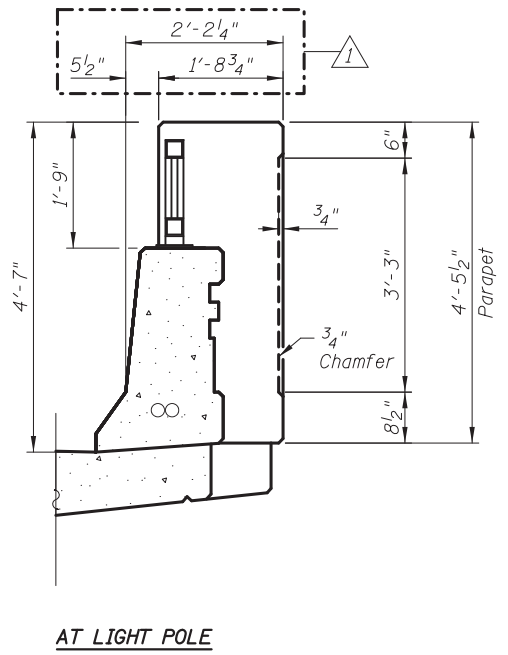
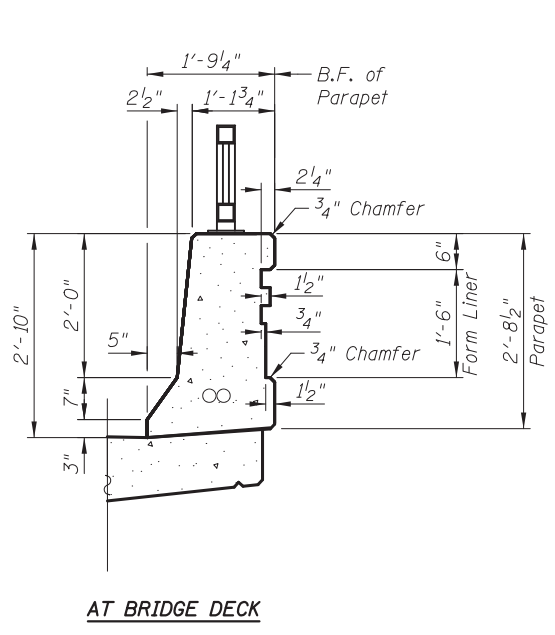
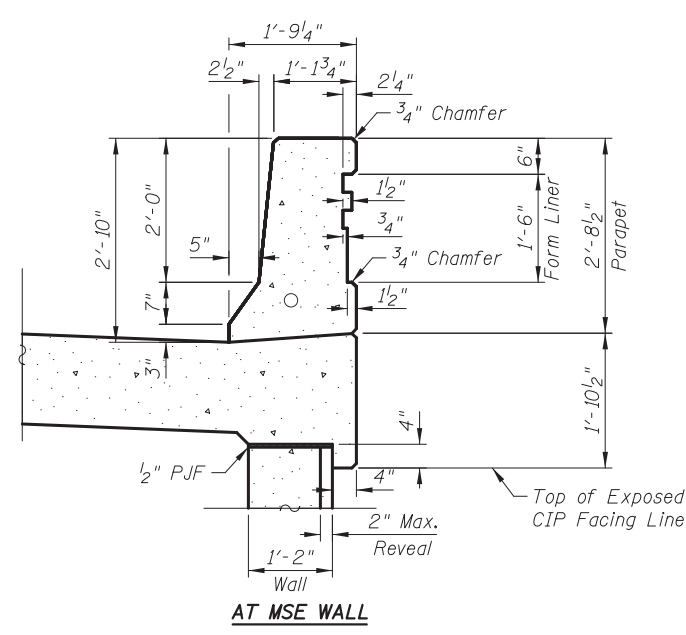
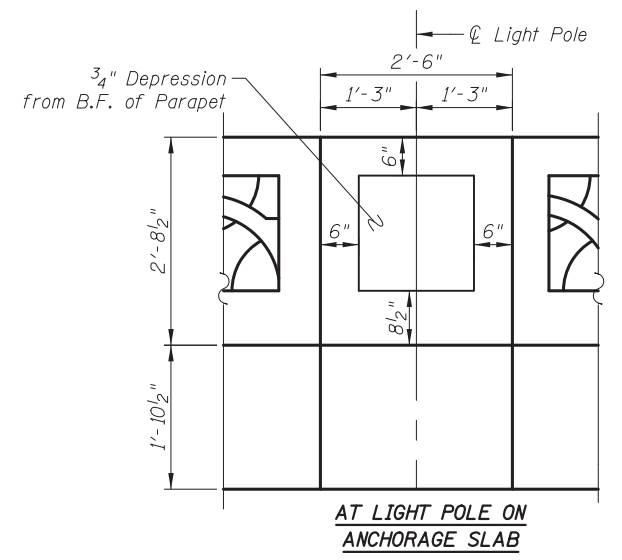
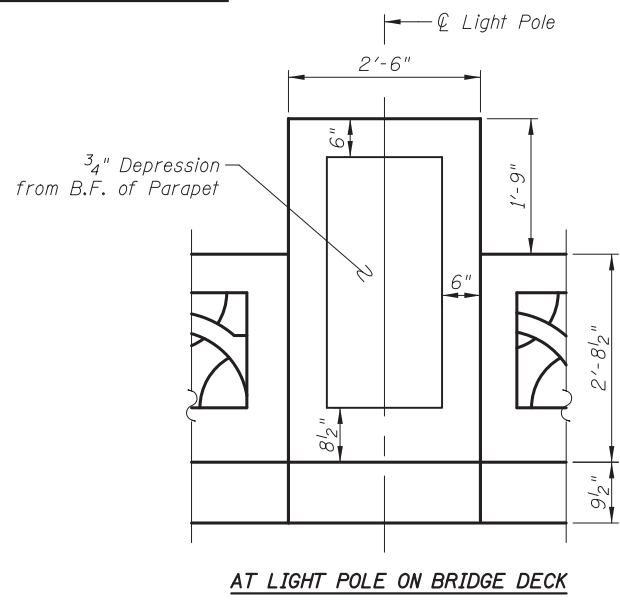
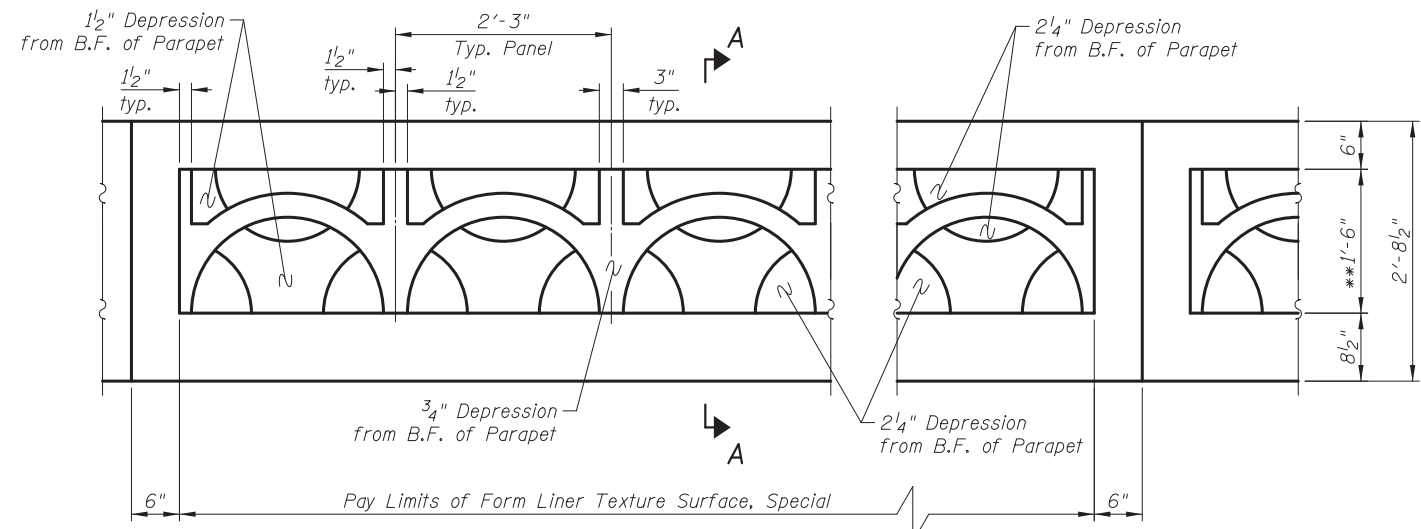


5/21/2012 11:25:33 AM I:\2164\cad\sheet\Roadway\20-Structures & Walls\04-SN 056-0079\0560079-60F72-1-AD_rev2.dgn



ELEVATION - EXTERIOR FASCIA

* Lateral Bracing connections shall occur at the vertical aluminum tubes and Hangers shall occur in mid span of lattice. Contractor to layout locations and submit shop drawings for approval.



SECTION A-A

Notes:
 Parapet, railing, lighting and all other details not specifically pertaining to the lattice are shown for graphics purposes only.
 See Sheet SC10 for Hanger and Lateral Bracing Details.

CIVILTECH
 450 E Devon Ave, Suite 300
 Itasca, Illinois 60143
 Tel: 630.773.3900 Fax: 630.773.3975
 www.civiltechinc.com

DRAWN	- M. LANGE	REVISED	- 5/3/12 K.L.B.
DESIGNED	- D. ATKINS	REVISED	-
CHECKED	- G. HATLESTAD	REVISED	-
DATE	- 5/3/2012	REVISED	-

STATE OF ILLINOIS
DEPARTMENT OF TRANSPORTATION

ARCHITECTURAL DETAILS
NB EXIT RAMP (RAMP B) OVER CRYSTAL CREEK
STRUCTURE NO. 056-0079
 SHEET NO. SC11 OF SC29 SHEETS

O.R. RTE.	SECTION	COUNTY	TOTAL SHEETS	SHEET NO.
0003	18A-2	MCHENRY	825	536
CONTRACT NO. 60F72				
ILLINOIS FED. AID PROJECT				