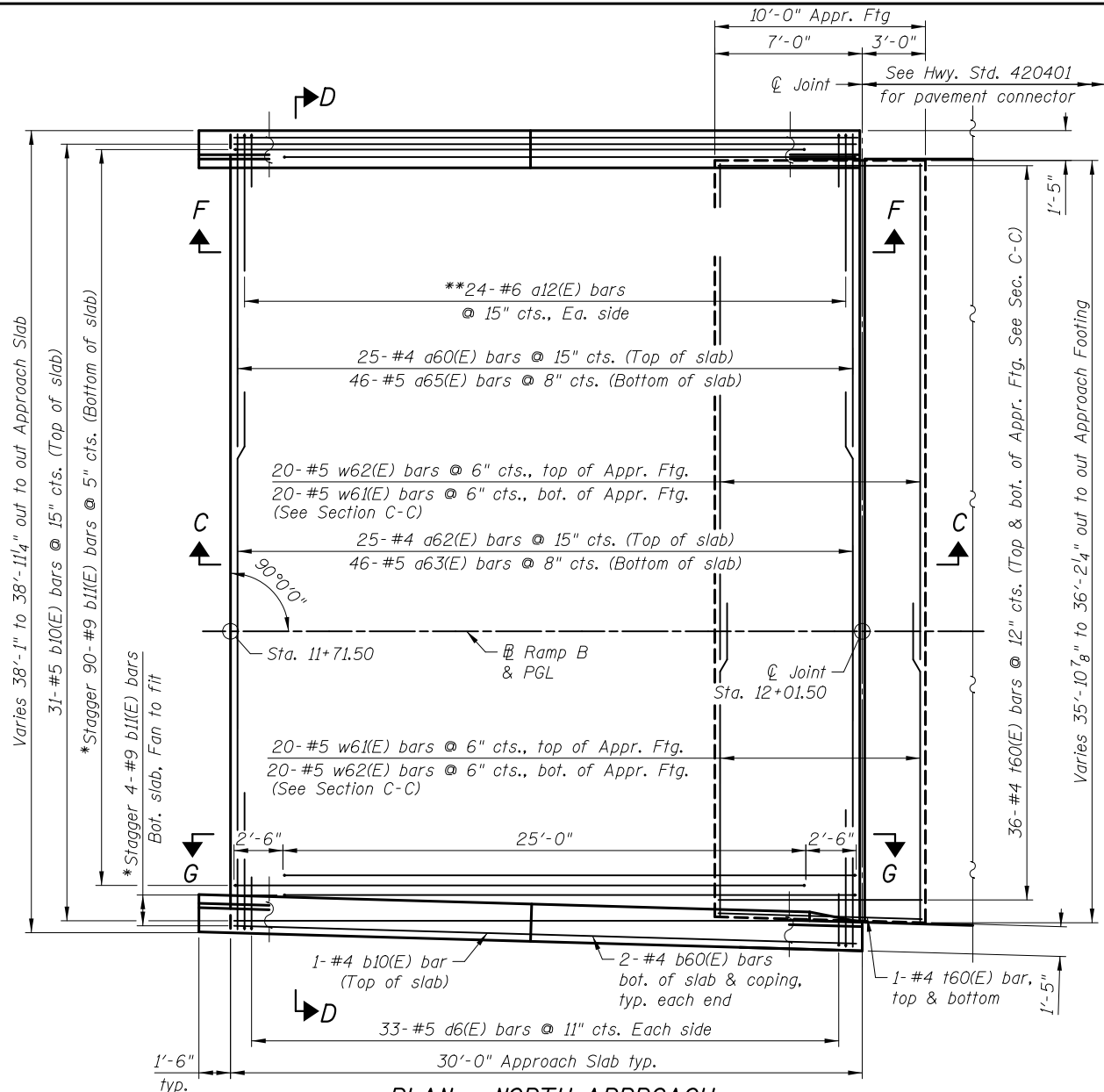


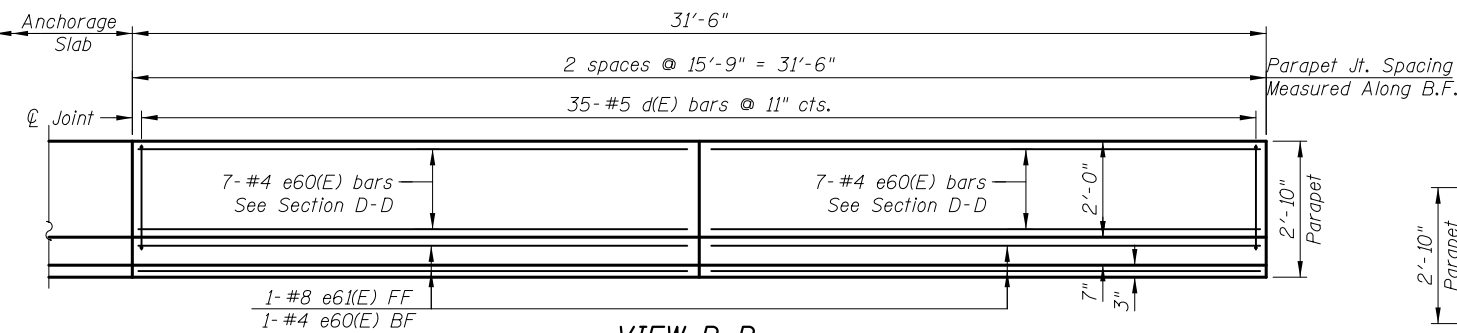
**PLAN - SOUTH APPROACH**



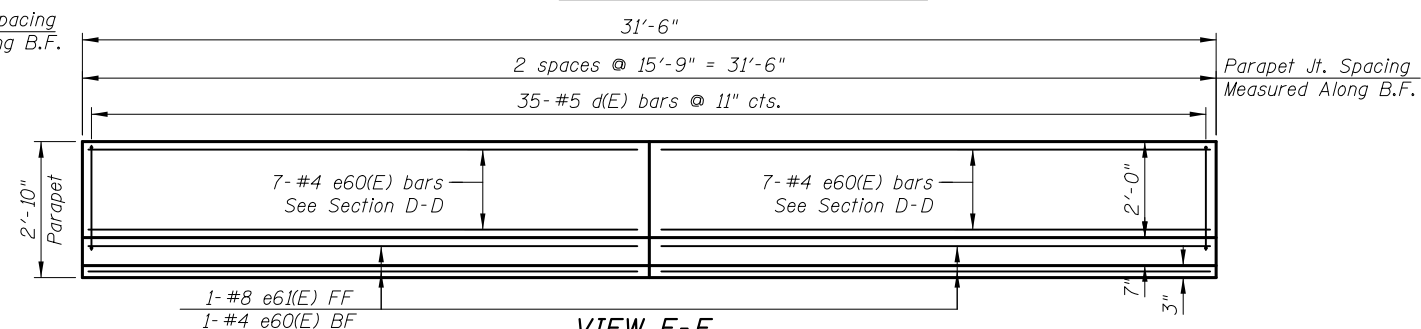
**PLAN - NORTH APPROACH**

**MINIMUM BAR LAP**  
 (Approach Slab)  
 #4 bar = 2'-7"  
 #5 bar = 3'-3"

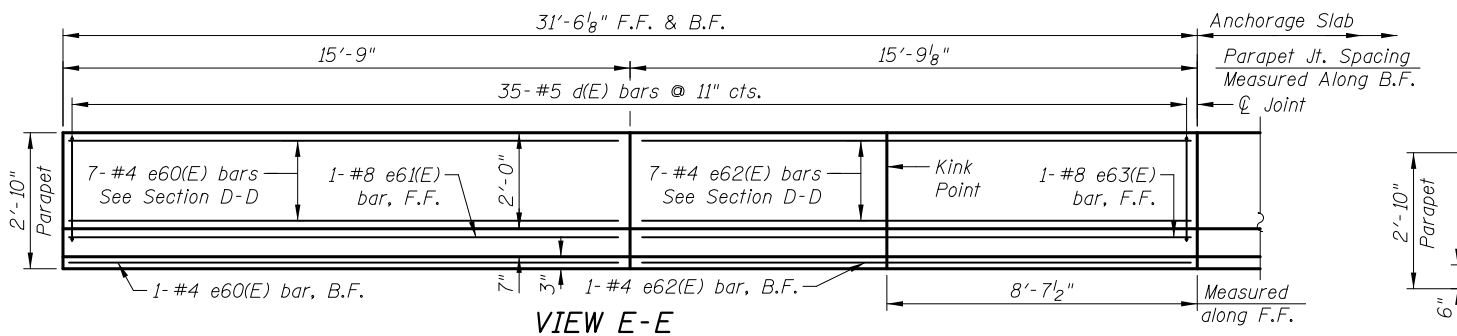
\* Tilt #9 b11(E) bars as required to maintain clearance.  
 \*\* Space between a60(E) thru a62(E) top bars.



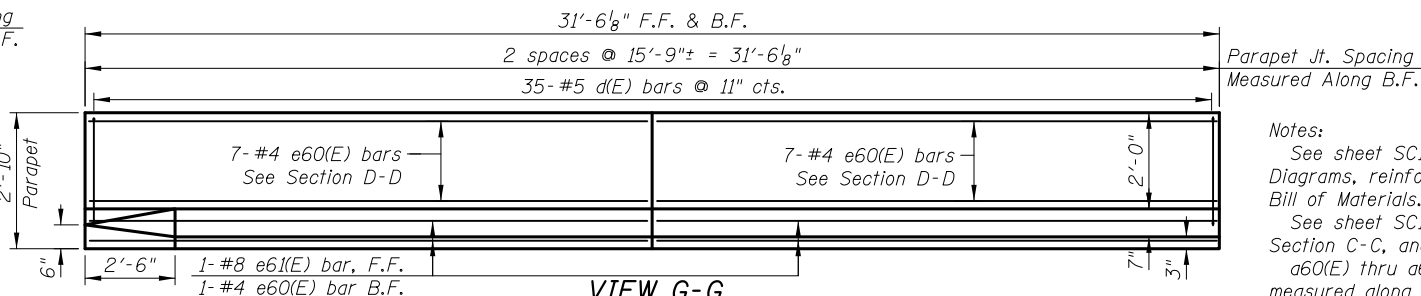
**VIEW B-B**



**VIEW F-F**



**VIEW E-E**



**VIEW G-G**

**Notes:**  
 See sheet SC13 for Bar Bending Diagrams, reinforcement Schedule & Bill of Materials.  
 See sheet SC13 for Detail A, Section C-C, and D-D.  
 a60(E) thru a65(E) bar spacings measured along  $\perp$  Ramp B.

4/20/23 PM 4:20:23 PM I:\2154\cad\sheet\Roadway\20-Structures & Walls\04-SN\_056-0079\0560079-60F72-12-APS\_rev.dgn

DRAWN	- M. LANGE	REVISED	-
DESIGNED	- D. ATKINS	REVISED	-
CHECKED	- G. HATLESTAD	REVISED	-
DATE	- 5/3/2012	REVISED	-

O.R. RTE.	SECTION	COUNTY	TOTAL SHEETS	SHEET NO.
0003	18A-2	MCHENRY	825	537
<b>CONTRACT NO. 60F72</b>				