

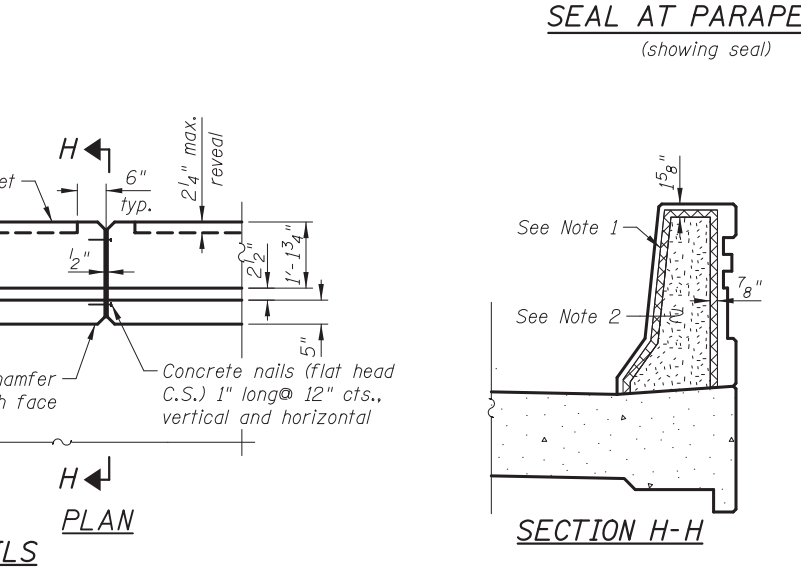
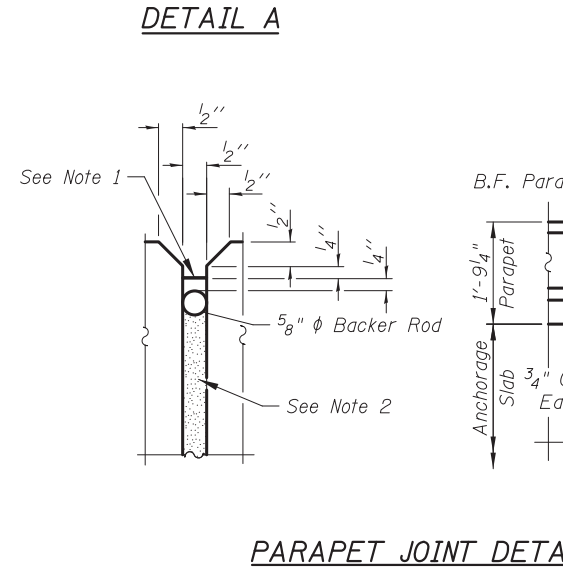
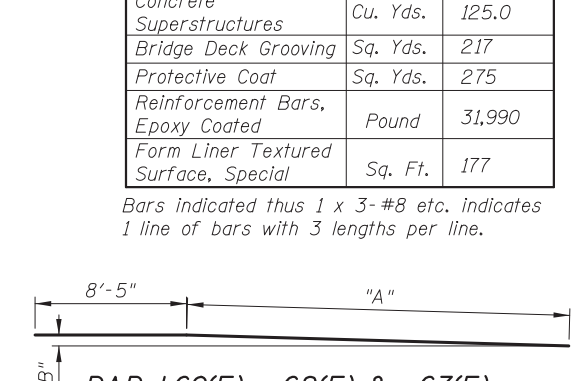
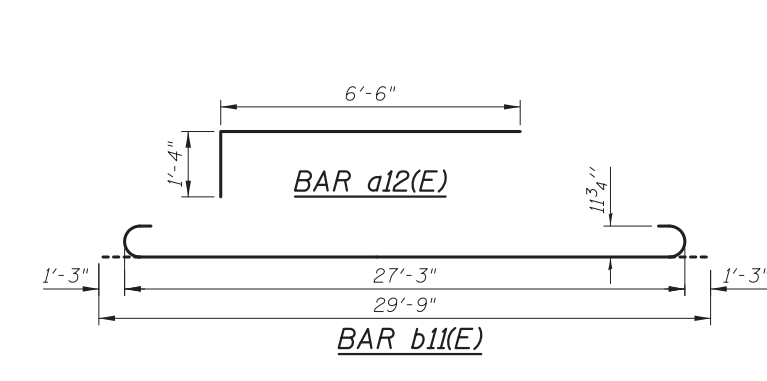
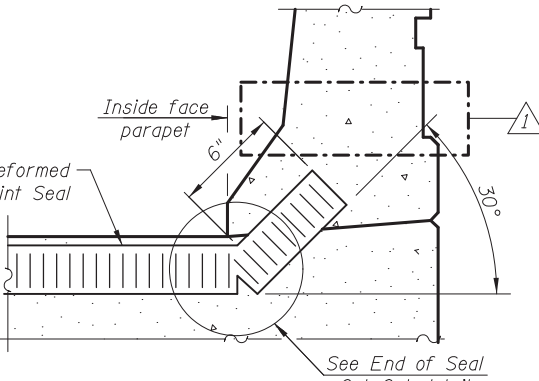
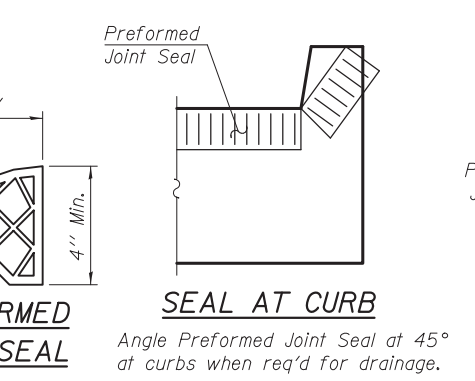
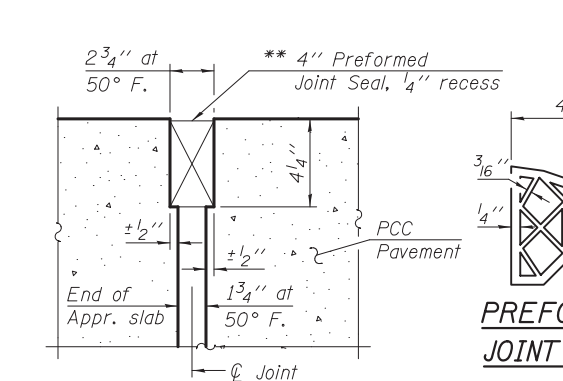
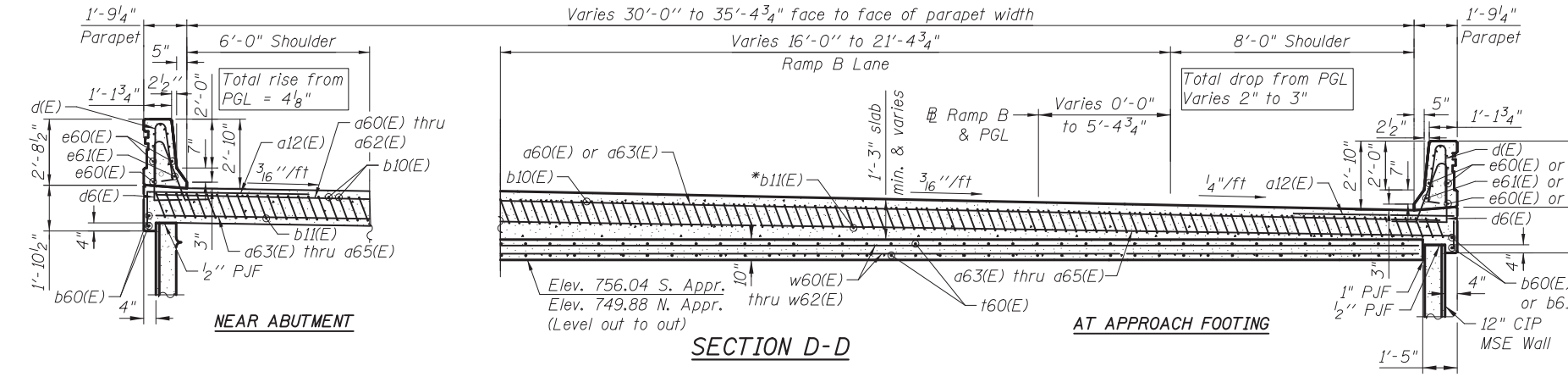
* Tilt #9 b11(E) bars as required to maintain clearance.
 ** Cost included with Concrete Superstructure.

Hatched area to be poured after superstructure false work has been removed. See Abutment Sheets SC20 thru SC21.

Notes:
 See sheet SC12 for View B-B, E-E, F-F & G-G.
 Approach slab and parapet concrete shall be paid for as Concrete Superstructure.
 Approach footing concrete shall be paid for as Concrete Structures.
 Reinforcement shall be paid for as Reinforcement Bars, Epoxy Coated.
 For v(E) bar details, see sheets SC20 & SC21.
 The approach footing maximum applied service bearing pressure (Q_{max}) = 2.0 ksf.
 For bar splicer details see sheet SC26.
 Cost of excavation for approach footing included with Concrete Structures.
 For additional parapet details, see sheet SC11 for dimensions and for formliner details.

BILL OF MATERIAL
 (For 2 Approaches)

Bar	No.	Size	Length	Shape
a12(E)	96	#6	7'-10"	
a13(E)	16	#5	3'-6"	
a60(E)	50	#4	15'-0"	
a61(E)	25	#4	21'-4"	
a62(E)	25	#4	26'-2"	
a63(E)	92	#5	15'-0"	
a64(E)	46	#5	22'-1"	
a65(E)	46	#5	26'-10"	
b10(E)	59	#4	29'-8"	
b11(E)	175	#9	29'-9"	
b60(E)	7	#4	29'-8"	
b61(E)	2	#4	29'-8"	
d(E)	140	#5	5'-7"	
d6(E)	132	#5	7'-11"	
e60(E)	56	#4	15'-5"	
e61(E)	7	#8	15'-5"	
e62(E)	8	#4	15'-5"	
e63(E)	1	#8	15'-5"	
t60(E)	136	#4	9'-8"	
w60(E)	40	#5	30'-4"	
w61(E)	40	#5	15'-0"	
w62(E)	40	#5	24'-0"	
Item	Unit	Quantity		
Concrete Structures	Cu. Yds.	20.6		
Concrete Superstructures	Cu. Yds.	125.0		
Bridge Deck Grooving	Sq. Yds.	217		
Protective Coat	Sq. Yds.	275		
Reinforcement Bars, Epoxy Coated	Pound	31,990		
Form Liner Textured Surface, Special	Sq. Ft.	177		



Parapet Joint Notes:
 1. Non-staining gray one component non-sag elastomeric gun grade polyurethane sealant meeting the requirements of ASTM C-920, Type S, Grade NS, Class 25, use T with a 5/8" backer rod.
 2. 1/2" Preformed Self-Expanding Cork Joint Filler according to Article 1051.07 of the Std. Spec. Cost included with Concrete Superstructure.

