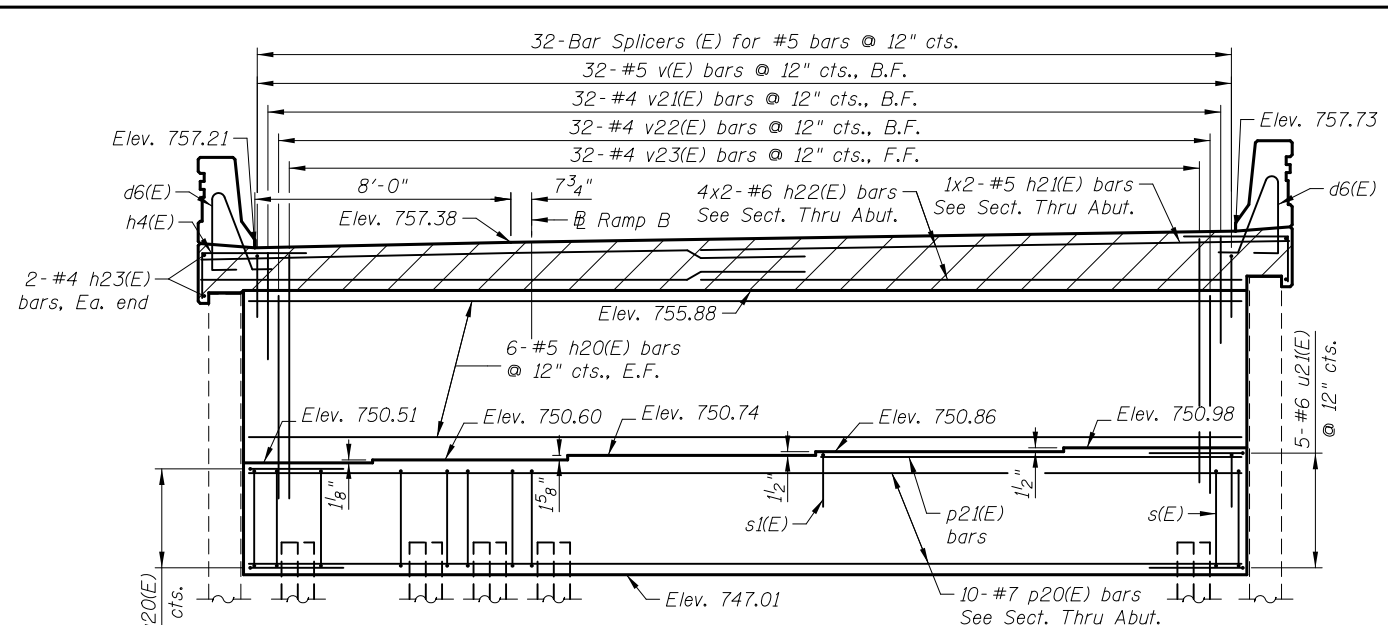
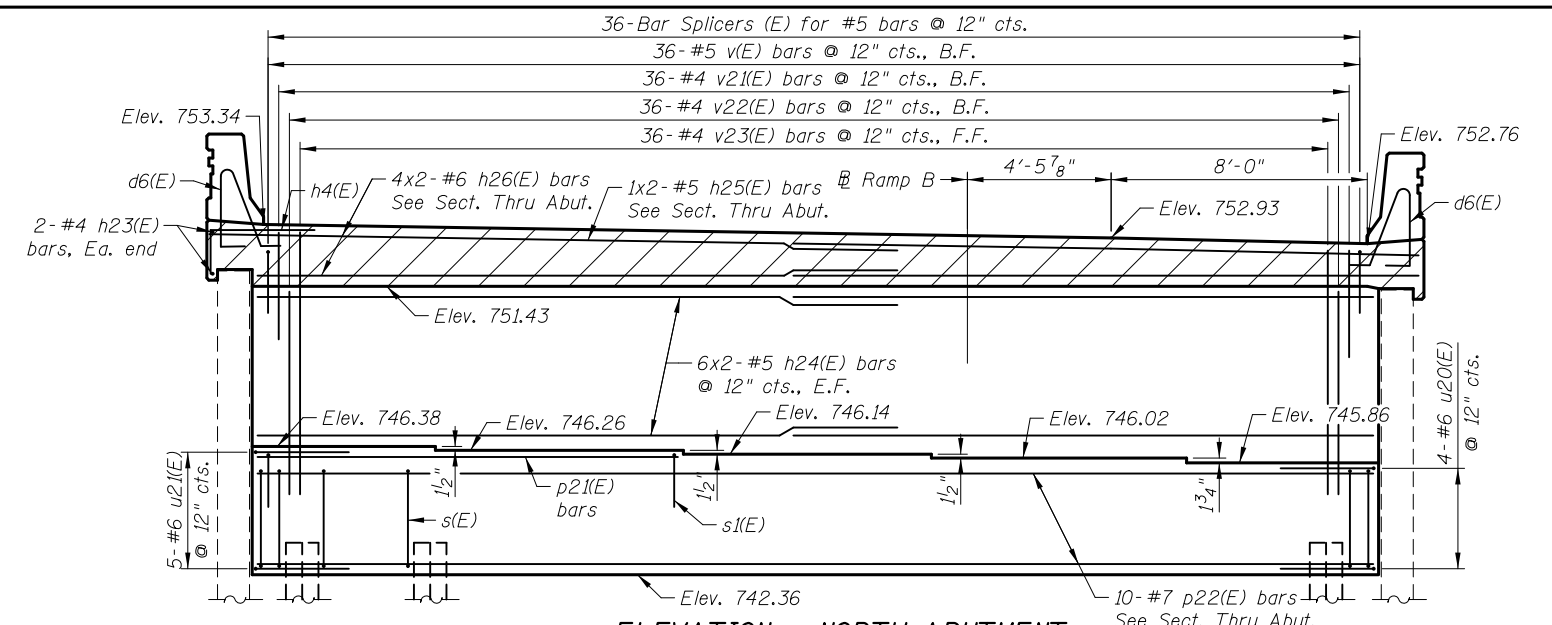


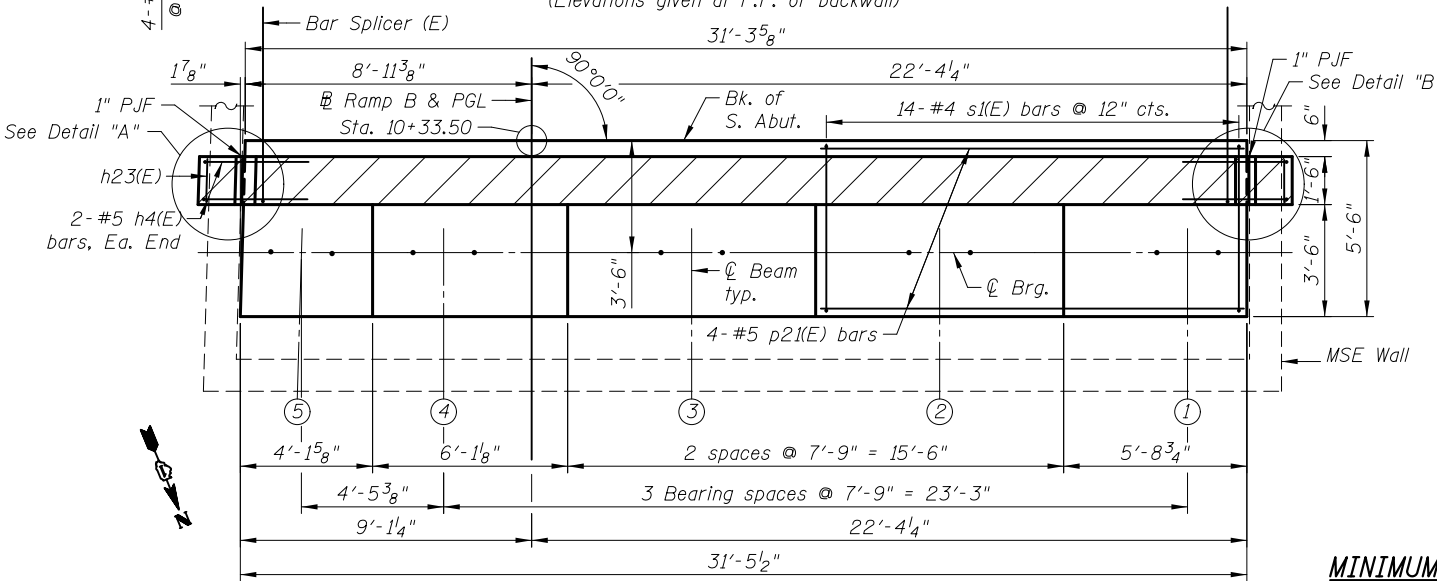
4/20/2012 4:20:28 PM J:\2154\cad\sheet\20-Structures & Walls\04-SN_056-0079\0560079-60F72-AB.dgn



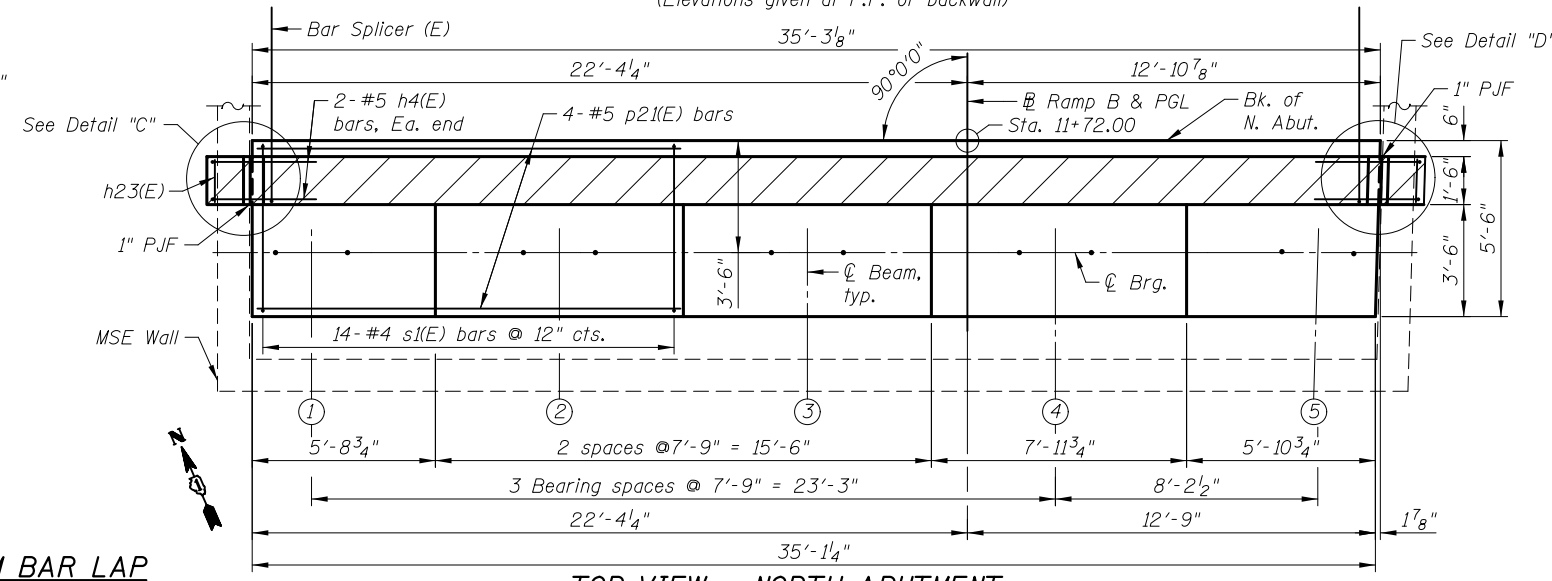
ELEVATION - SOUTH ABUTMENT
(Elevations given at F.F. of backwall)



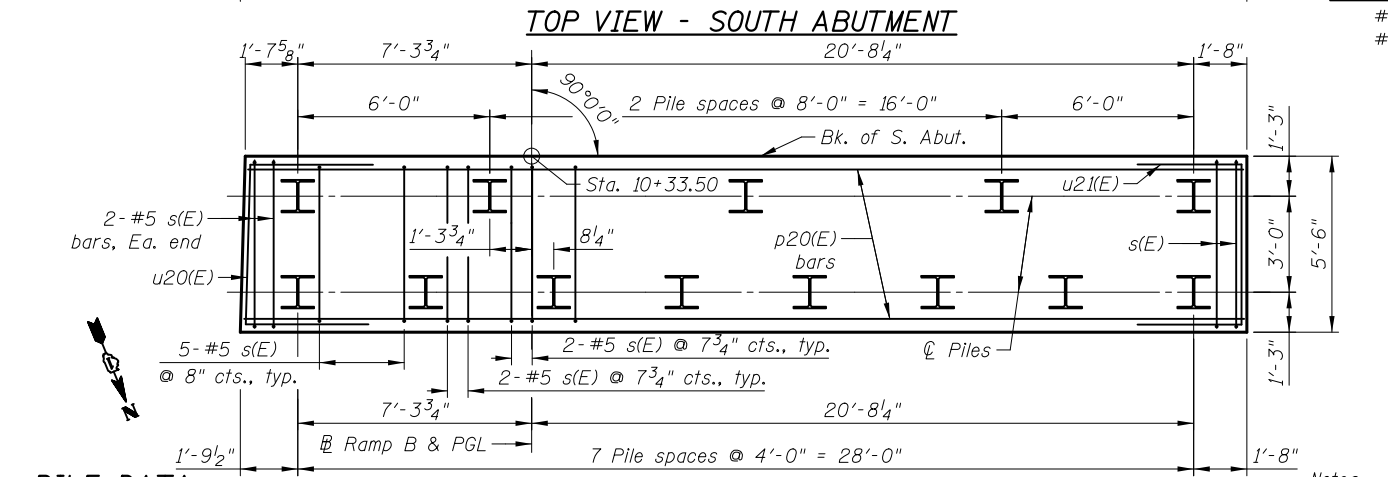
ELEVATION - NORTH ABUTMENT
(Elevations given at F.F. of backwall)



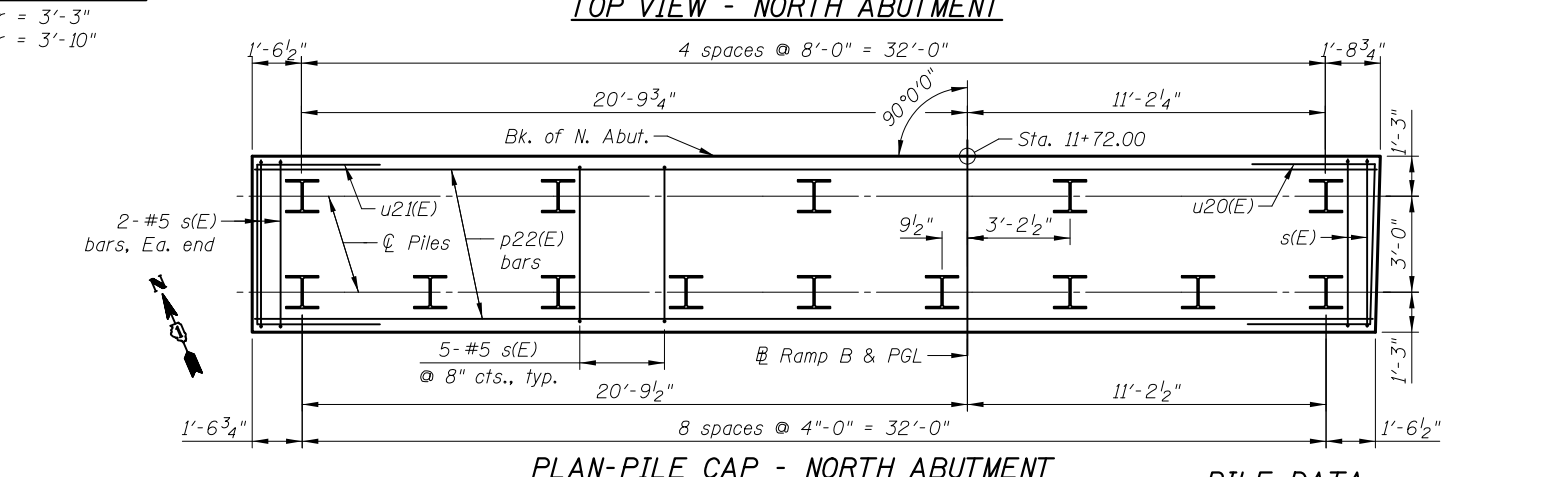
TOP VIEW - SOUTH ABUTMENT



TOP VIEW - NORTH ABUTMENT



PLAN-PILE CAP - SOUTH ABUTMENT



PLAN-PILE CAP - NORTH ABUTMENT

PILE DATA
S. ABUTMENT
Type: HP14x73
Nominal Required Bearing: 400 kips
Factored Resistance Available: 220 kips
Est. Length: 65 feet
No. Production Piles: 12
No. Test Piles: 1

PILE DATA
N. ABUTMENT
Type: HP14x73
Nominal Required Bearing: 400 kips
Factored Resistance Available: 220 kips
Est. Length: 63 feet
No. Production Piles: 13
No. Test Piles: 1

MINIMUM BAR LAP
#5 bar = 3'-3"
#6 bar = 3'-10"

Notes:
Space reinforcement in cap to miss anchor bolts.
Pour steps monolithically with cap.
See sheet SC21 for Details "A" thru "D".
See sheet SC26 for details of Bar Splicers.
See sheet SC21 for Bill of Material, Bar Bending diagrams, Section Thru Abutment & Anchor Bolt Diagrams.
Bars indicated thus 4x3-#5 indicate 4 lines of bars with 3 lengths per line.

Hatched area to be poured after superstructure false work has been removed. Quantity of concrete included with Concrete Superstructure.
Parapets to be poured with the Approach Slabs.

DRAWN	- M. LANGE	REVISED	-
DESIGNED	- D. ATKINS	REVISED	-
CHECKED	- G. HATLESTAD	REVISED	-
DATE	- 5/3/2012	REVISED	-

O.R. RTE.	SECTION	COUNTY	TOTAL SHEETS	SHEET NO.
0003	18A-2	MCHENRY	825	545
CONTRACT NO. 60F72			ILLINOIS FED. AID PROJECT	