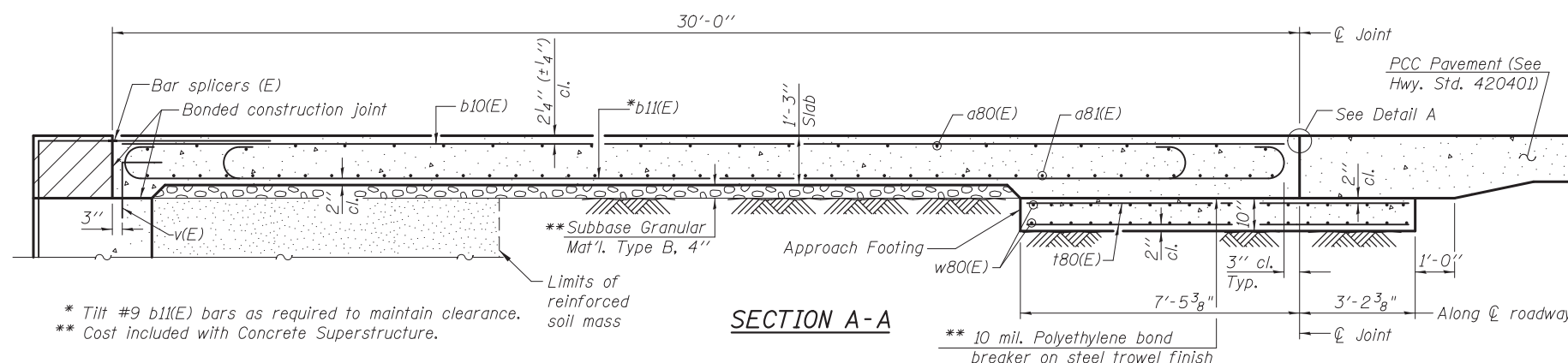


**BILL OF MATERIAL**

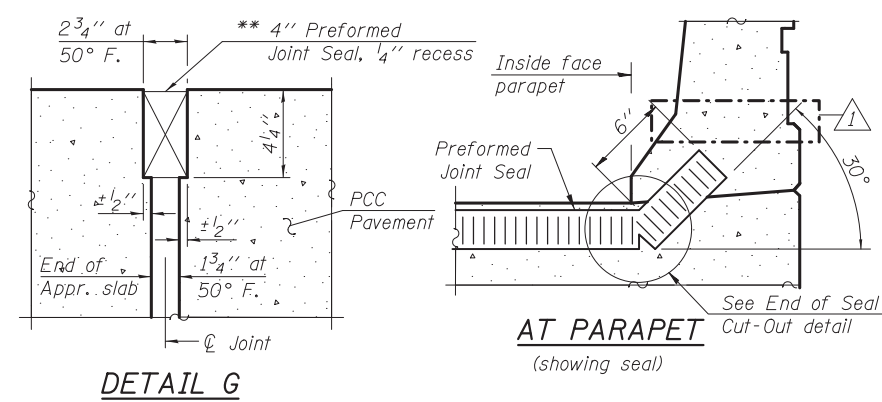
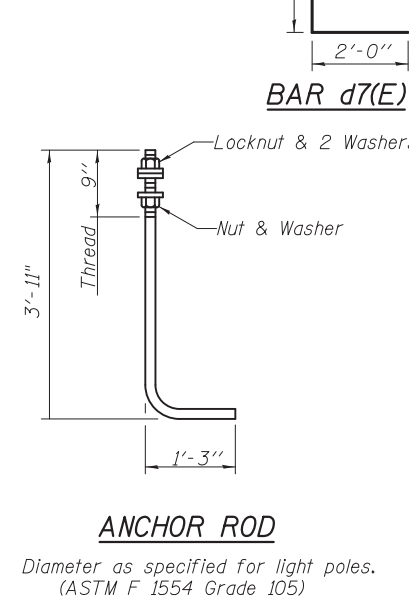
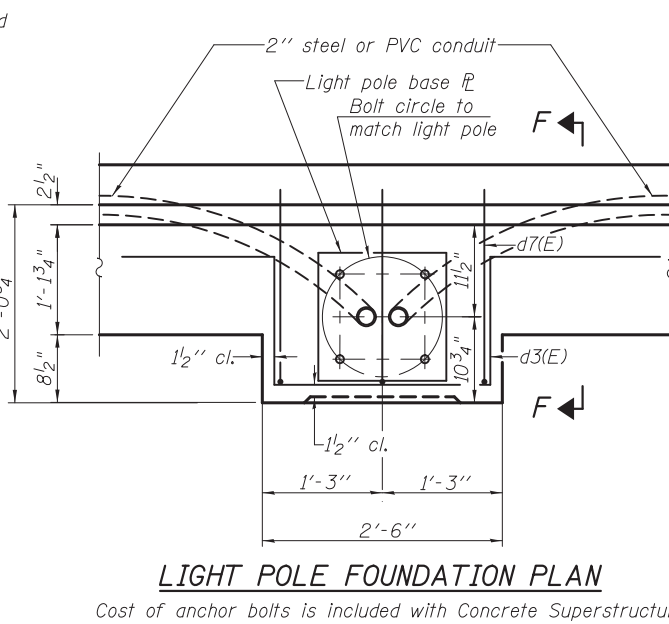
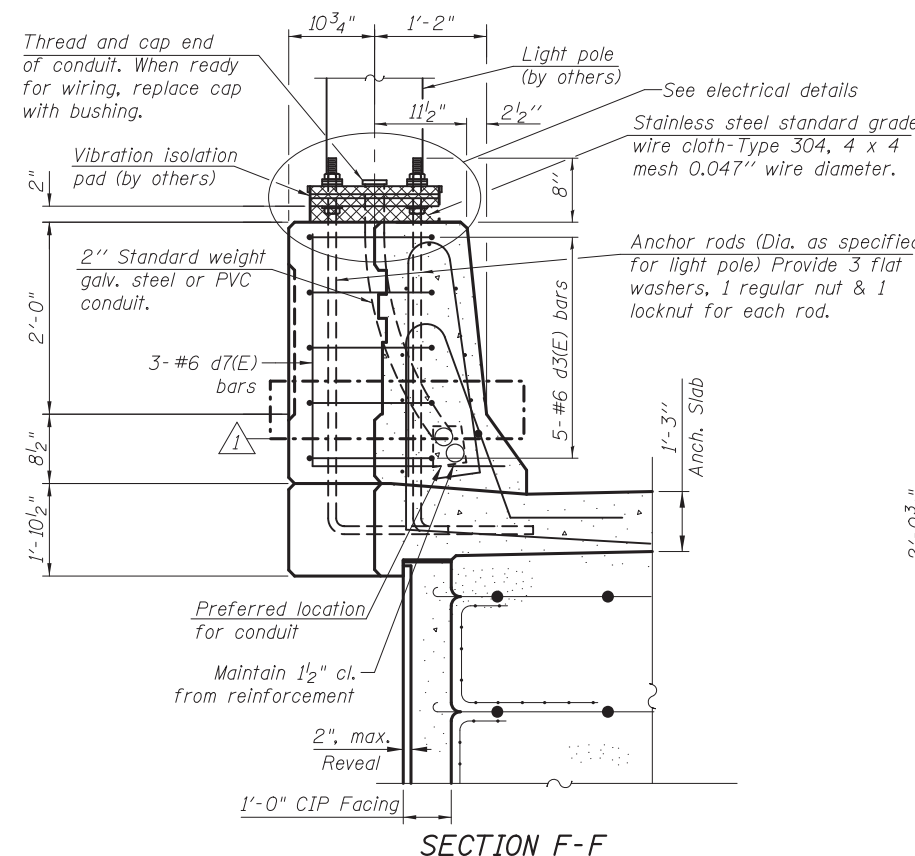
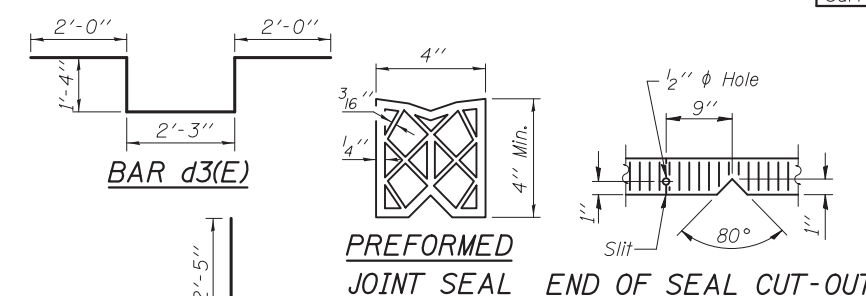
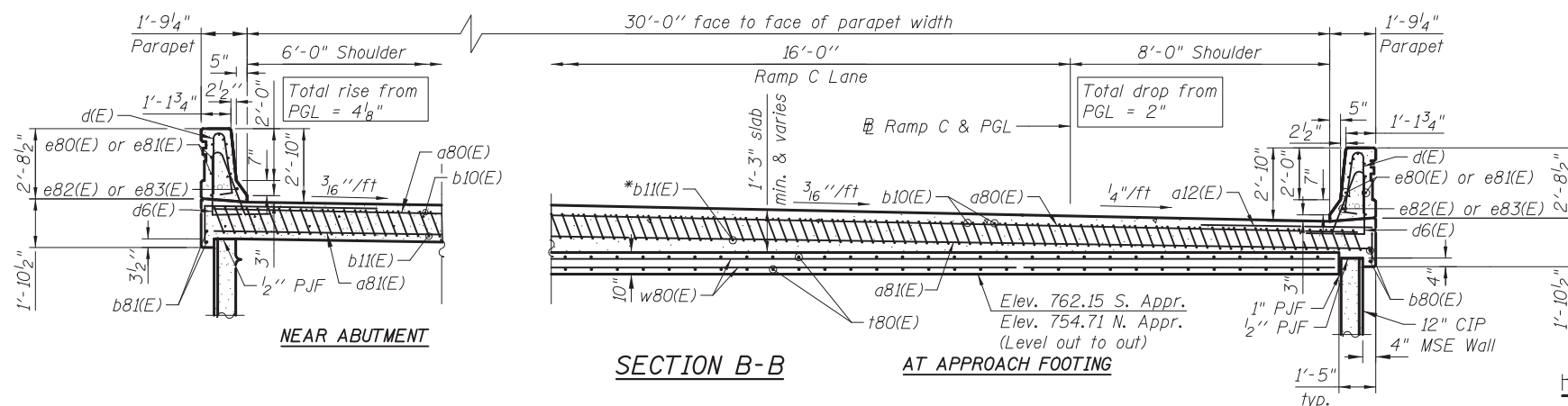
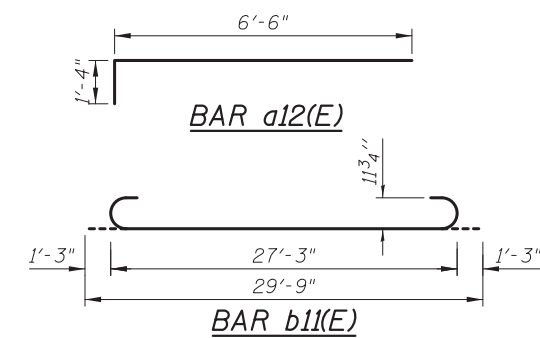
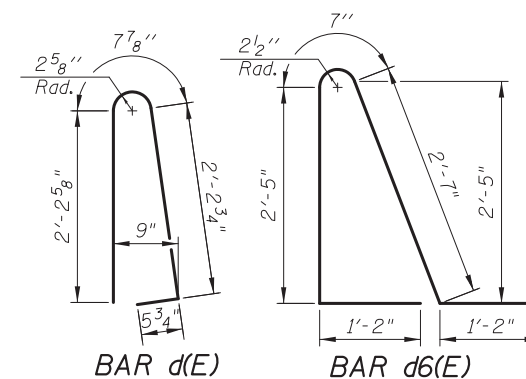
(For 2 Approaches)

Bar	No.	Size	Length	Shape
a12(E)	100	#6	7'-10"	┌
a13(E)	16	#5	3'-6"	—
a80(E)	50	#4	35'-4"	—
a81(E)	92	#5	35'-4"	—
b10(E)	56	#4	29'-8"	—
b11(E)	162	#9	29'-9"	┌
b80(E)	4	#4	30'-3"	—
b81(E)	4	#4	29'-1"	—
d(E)	140	#5	5'-7"	┌
d3(E)	5	#6	8'-11"	┌
d6(E)	132	#5	7'-11"	┌
d7(E)	3	#6	4'-5"	┌
e80(E)	32	#4	15'-9"	—
e81(E)	32	#4	15'-1"	—
e82(E)	4	#8	15'-9"	—
e83(E)	4	#8	15'-1"	—
t80(E)	124	#4	10'-4"	—
w80(E)	80	#5	32'-4"	—
Item	Unit	Quantity		
Concrete Structures	Cu. Yds.	20.2		
Concrete Superstructures	Cu. Yds.	122.1		
Bridge Deck Grooving	Sq. Yds.	200		
Protective Coat	Sq. Yds.	259		
Reinforcement Bars, Epoxy Coated	Pound	29,990		
Form Liner Textured Surface, Special	Sq. Ft.	172		



\* Tilt #9 b11(E) bars as required to maintain clearance.  
\*\* Cost included with Concrete Superstructure.

Hatched area to be poured after superstructure false work has been removed. See Abutment Sheets SD20 & SD21.



Notes:  
Approach slab and parapet concrete shall be paid for as Concrete Superstructure.  
Approach footing concrete shall be paid for as Concrete Structures.  
Reinforcement shall be paid for as Reinforcement Bars, Epoxy Coated.  
For (V)E bar details, see sheet SD20 & SD21.  
The approach footing maximum applied service bearing pressure (Qmax) = 2.0 ksf.  
For bar splicer details, see sheet SD27.  
Cost of excavation for approach footing included with Concrete Structures.  
For additional parapet details, see sheet SD11 for dimensions and for form liner details.

I:\2154\cad\sheet\Roadway\20-Structures & Walls\05-SN\_056-0080\0560080-60F72-13-APD\_rev2.dgn 11/4/19 AM 5/21/2012