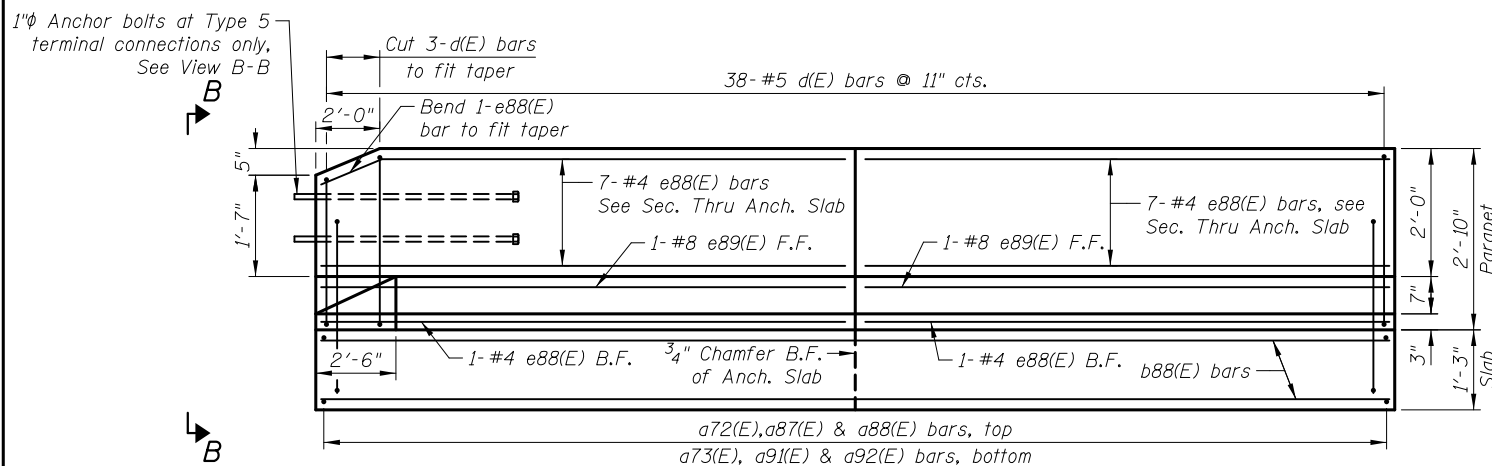


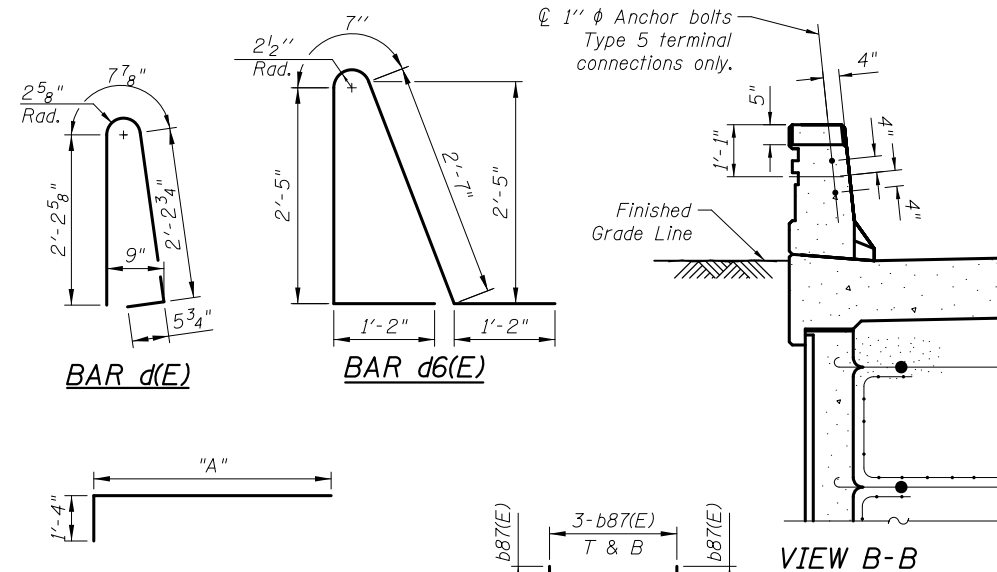
**ANCHORAGE SLABS
BILL OF MATERIAL**

Bar	No.	Size	Length	Shape
a70(E)	62	#6	8'-9"	
a71(E)	62	#5	7'-5"	
a72(E)	35	#6	10'-9"	
a73(E)	35	#5	9'-5"	
a85(E)	4	#6	8'-11"	
a86(E)	1	#6	9'-3"	
a87(E)	2	#6	10'-11"	
a88(E)	1	#6	11'-2"	
a89(E)	4	#5	7'-7"	
a90(E)	1	#5	7'-11"	
a91(E)	2	#5	9'-7"	
a92(E)	1	#5	9'-10"	
b86(E)	40	#5	24'-6"	
b87(E)	6	#5	27'-0"	
b88(E)	48	#5	18'-4"	
b89(E)	6	#5	14'-6"	
b90(E)	2	#5	12'-4"	
d(E)	104	#5	5'-7"	
d6(E)	104	#5	7'-11"	
e86(E)	16	#4	21'-7"	
e87(E)	8	#4	14'-6"	
e88(E)	16	#4	16'-7"	
e89(E)	2	#8	16'-7"	
e90(E)	2	#8	21'-7"	
e91(E)	1	#8	14'-6"	
Item	Unit	Quantity		
Concrete Superstructures	Cu. Yd.	52.2		
Protective Coat	Sq. Yd.	110		
Reinforcement Bars, Epoxy Coated	Pound	6,810		
Form Liner Textured Surface, Special	Sq. Ft.	110		



ELEVATION SW ANCHORAGE SLAB

(Front face of parapet)

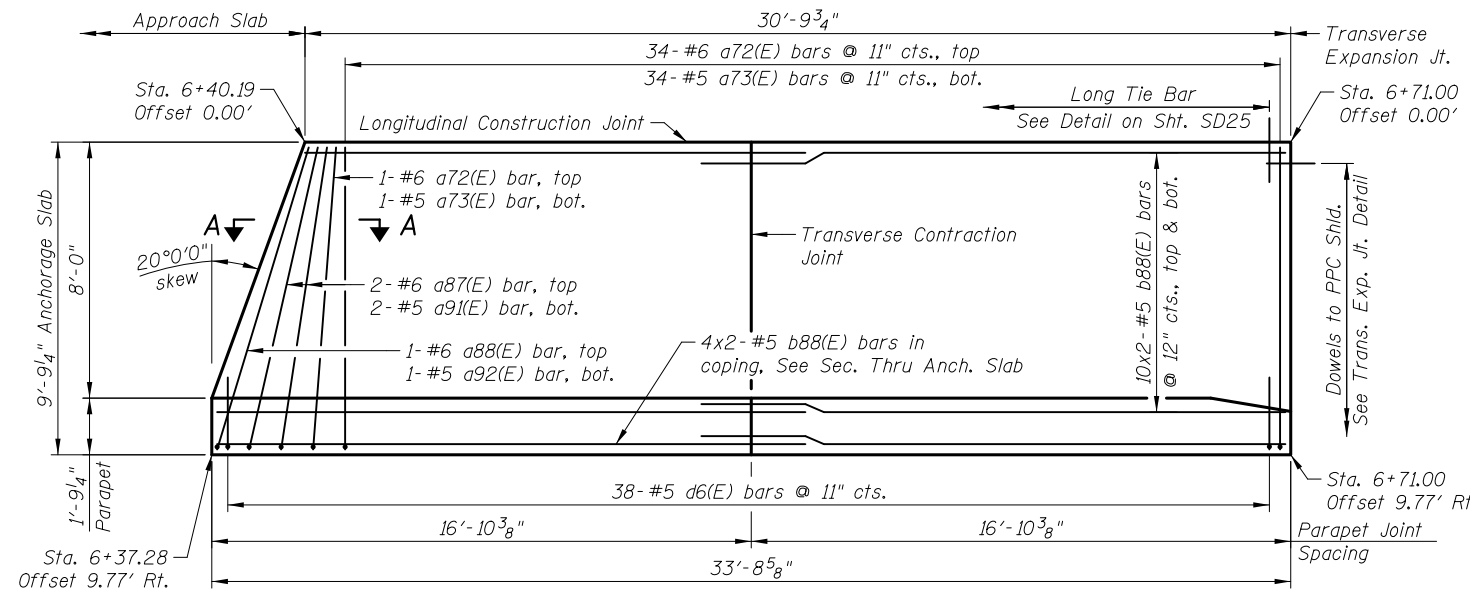


BAR a70(E), a72(E), & a85(E) thru a88(E)

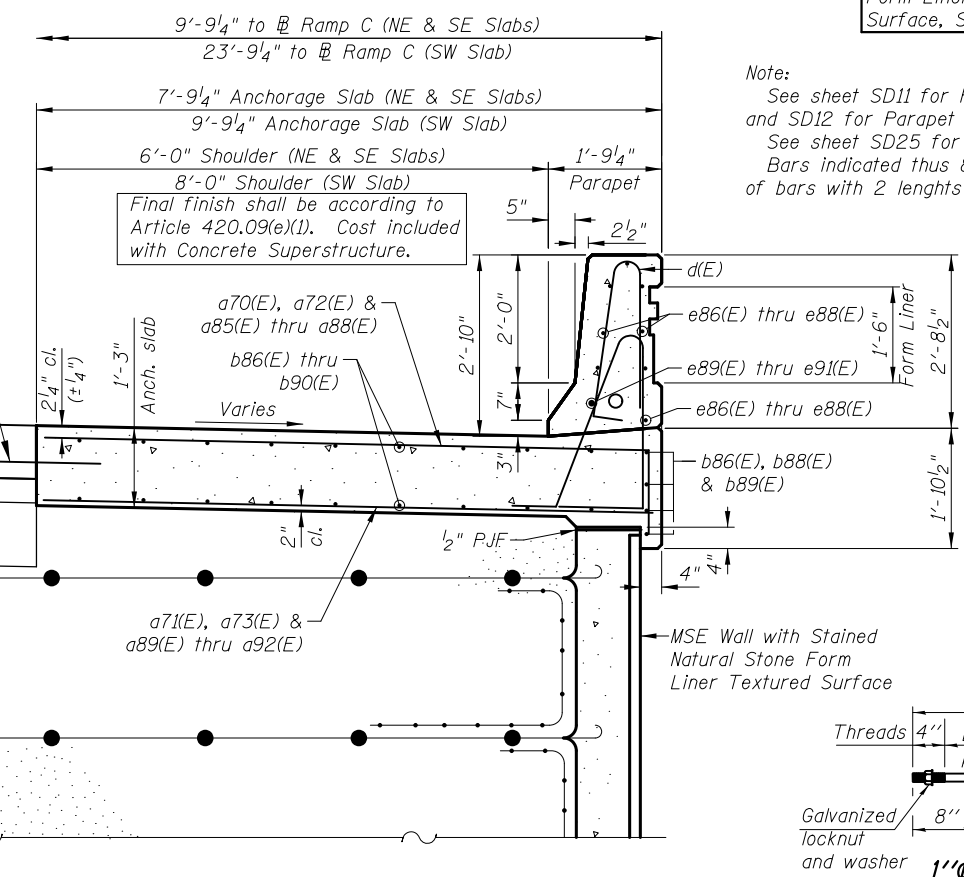
Bar	"A"
a70(E)	7'-5"
a72(E)	9'-5"
a85(E)	7'-7"
a86(E)	7'-11"
a87(E)	9'-7"
a88(E)	9'-10"

FIELD CUTTING DIAGRAM

T & B indicates top and bottom

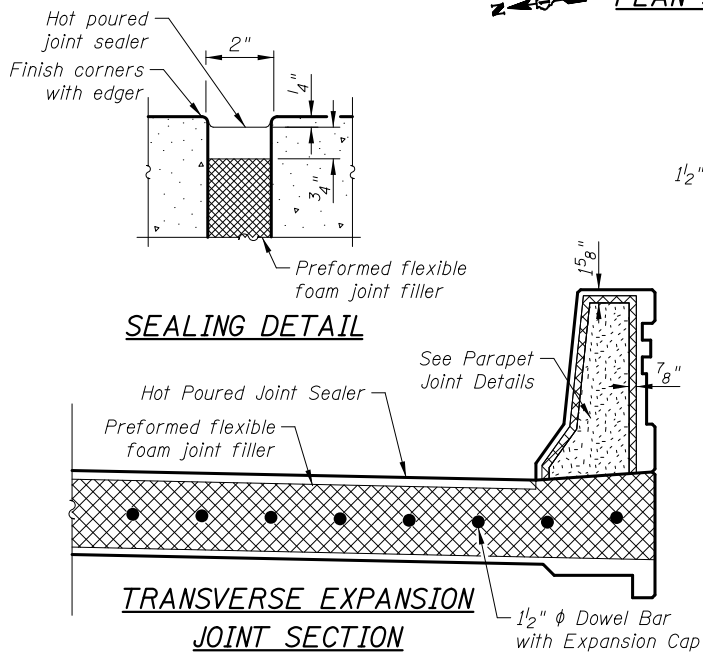


PLAN SW ANCHORAGE SLAB



SECTION THRU ANCHORAGE SLAB

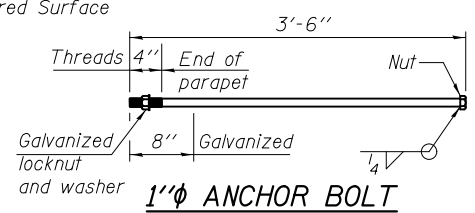
Note:
See sheet SD11 for Parapet Form Liner details and SD12 for Parapet Joint Details.
See sheet SD25 for Section A-A.
Bars indicated thus 8x2-#5 etc. indicate 8 lines of bars with 2 lengths per line.



SEALING DETAIL

TRANSVERSE EXPANSION JOINT

* Expansion caps shall be installed on the exposed end of each dowel bar once the header has been removed and the joint filler material has been installed.
Expansion Joint and Dowel Bars included in the cost of Concrete Superstructures.



1" ANCHOR BOLT

(Cost included with Concrete Superstructure)

5/2/2012 4:24:41 PM I:\2154\cad\sheet\Roadway\20-Structures & Walls\05-SN_056-0080\0560080-60F72-26-AND_Rev.dgn

CIVILTECH
 450 E Devon Ave, Suite 300
 Itasca, Illinois 60143
 Tel: 630.773.3900 Fax: 630.773.3975
 www.civiltechinc.com

DRAWN	- M. LANGE	REVISED	-
DESIGNED	- D. ATKINS	REVISED	-
CHECKED	- G. HATLESTAD	REVISED	-
DATE	- 5/3/2012	REVISED	-

**STATE OF ILLINOIS
DEPARTMENT OF TRANSPORTATION**

**ANCHORAGE SLAB DETAILS
SB ENTR. RAMP (RAMP C) OVER CRYSTAL CREEK
STRUCTURE NO. 056-0080**
SHEET NO. SD26 OF SD30 SHEETS

O.R. RTE.	SECTION	COUNTY	TOTAL SHEETS	SHEET NO.
0003	18A-2	MCHENRY	825	580
				CONTRACT NO. 60F72
ILLINOIS FED. AID PROJECT				