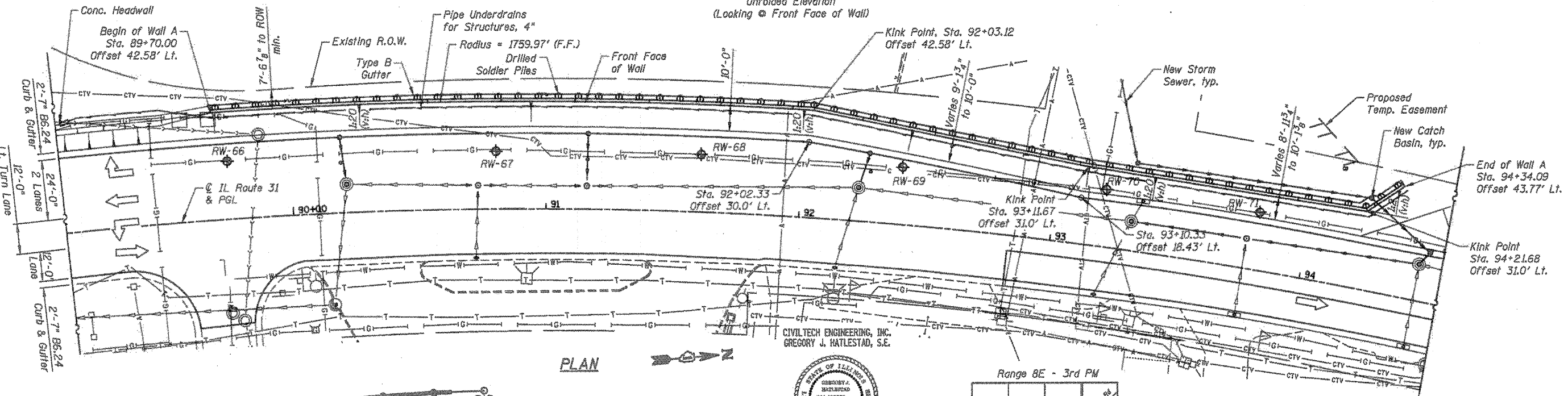
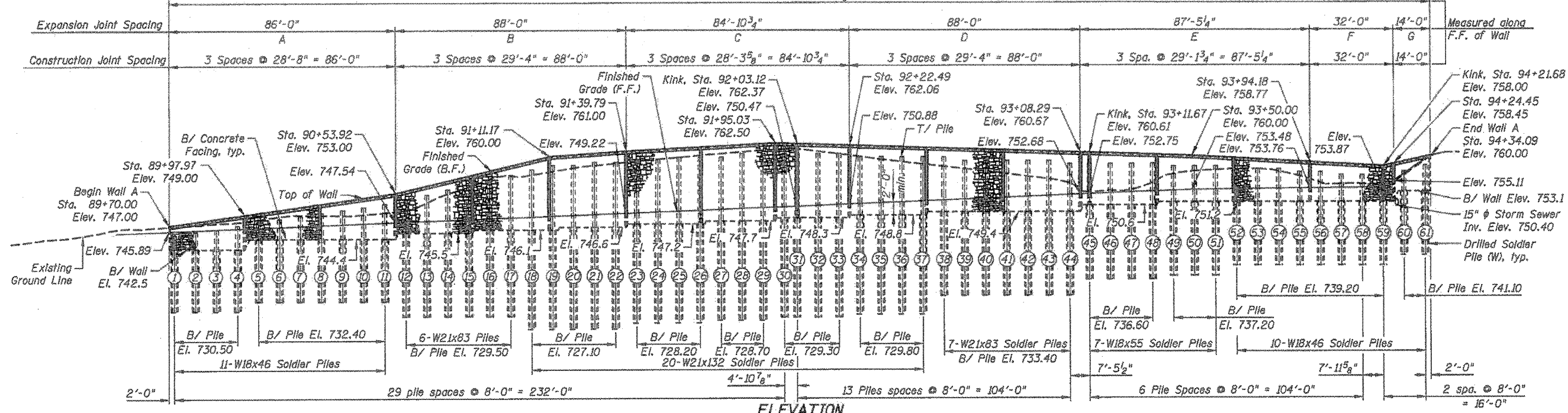


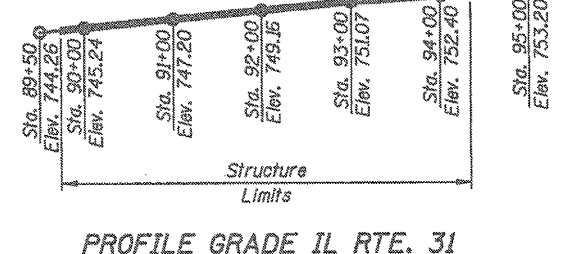
Benchmark: Control Point CP36, Mag nail set, IL Route 31 Station 94+24.18, Offset 29.47 feet Lt., Elev. 754.23

Existing Structure: None.

480'-4" End to End Retaining Wall Limits

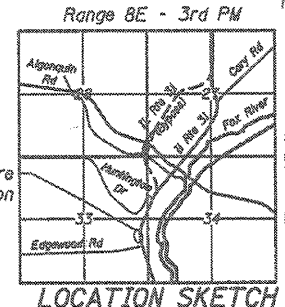


- LEGEND**
- ◆ Soil Borings
  - Existing Storm Sewer
  - Existing Water
  - Existing Gasline
  - Existing Cable TV
  - Existing Aerial Lines
  - Existing Telephone



**APPROVED**  
For Structural Adequacy Only  
*Gregory J. Hatlestad*  
Engineer of Bridges & Structures

CIVILTECH ENGINEERING, INC.  
GREGORY J. HATLESTAD, S.E.  
# 081-005562  
EXP 11/30/12  
DATE 3/15/12



**GENERAL PLAN AND ELEVATION**  
WALL A; IL RTE 31 (O.R. 0003)  
SECTION 18 A-2, MCHENRY COUNTY  
STA. 89+70 TO STA. 94+34.09  
STRUCTURE NO. 056-2507

Note:  
Offsets are measured from @ of IL Rte. 31 to the Front Face of Wall

**CIVILTECH**  
450 E Devon Ave, Suite 300  
Itasca, Illinois 60143  
Tel: 630.773.3900 Fax: 630.773.3975  
www.civiltechinc.com

DRAWN - M. LANGE  
DESIGNED - M. LANGE  
CHECKED - G. HATLESTAD  
DATE - 3/23/2012

STATE OF ILLINOIS  
DEPARTMENT OF TRANSPORTATION

**GENERAL PLAN AND ELEVATION**  
WALL A; IL RTE 31  
STRUCTURE NO. 056-2507  
SHEET NO. WALL OF WALL SHEETS

O.R. RITE	SECTION	COUNTY	TOTAL SHEETS	SHEET NO.
0003	18A-2	MCHENRY	825	585
			CONTRACT NO. 60F72	
ILLINOIS FED. AID PROJECT				