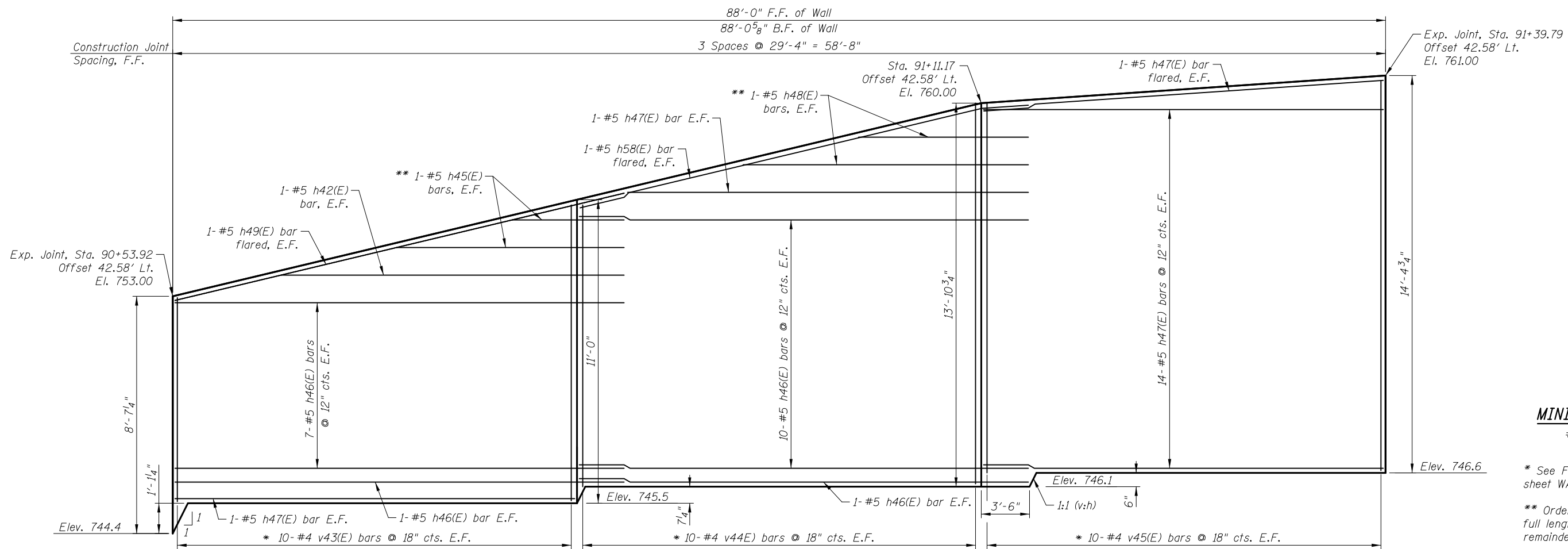


**ELEVATION A**



**ELEVATION B**

**MINIMUM BAR LAP**

#5 bar = 3'-3"

\* See Field Cutting Diagram on sheet WA7.

\*\* Order h45(E) and h48(E) bars full length. Cut to fit and use remainder as designated.

Station and offsets are taken from front face of wall.

5/2/2012 4:22:18 PM I:\2154\cad\sheet\Roadway\20-Structures & Walls\06-Wall A\0562507-60F72-03-AND.dgn