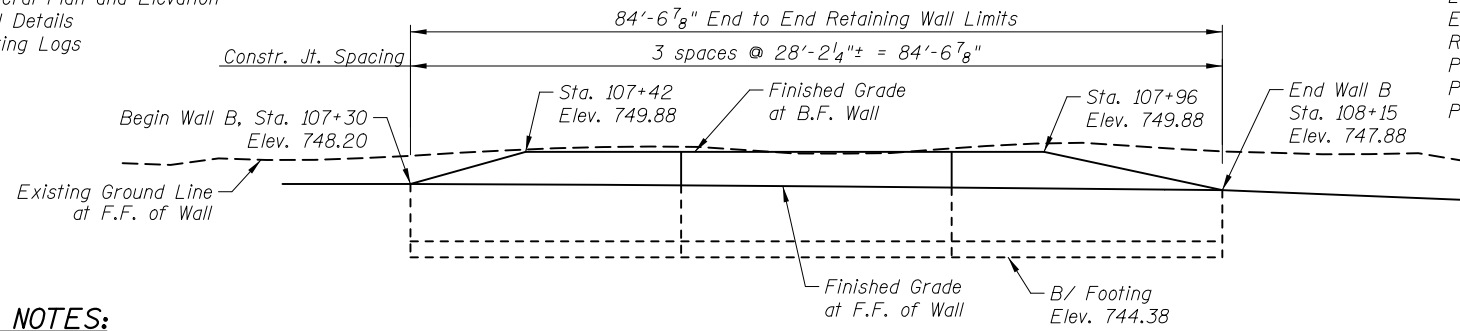


Bench Mark: Control Point 1, X-cut in Walk Set, IL Route 31 Sta. 106+40.34, Offset 44.02 feet Rt., Elev. 743.84

Existing Structure: None

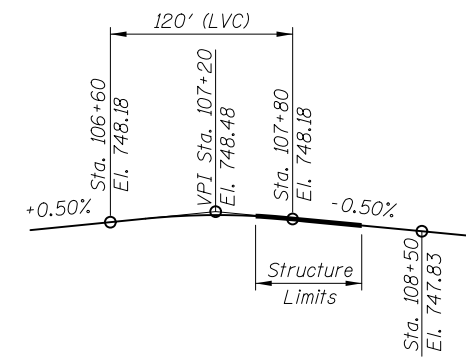
**INDEX OF SHEETS**

- WB1 General Plan and Elevation
- WB2 Wall Details
- WB3 Boring Logs



**CURVE DATA**

(IL Rte. 31)  
 $\Delta = 45^\circ 11' 23.25''$  (Lt.)  
 $D = 8^\circ 51' 43.06''$   
 $T = 269.06'$   
 $L = 509.93'$   
 $E = 53.75'$   
 $R = 646.54'$   
 $P.C. = \text{Sta. } 108+06.38$   
 $P.T. = \text{Sta. } 113+16.31$   
 $P.I. = \text{Sta. } 110+75.44$



**TOTAL BILL OF MATERIALS**

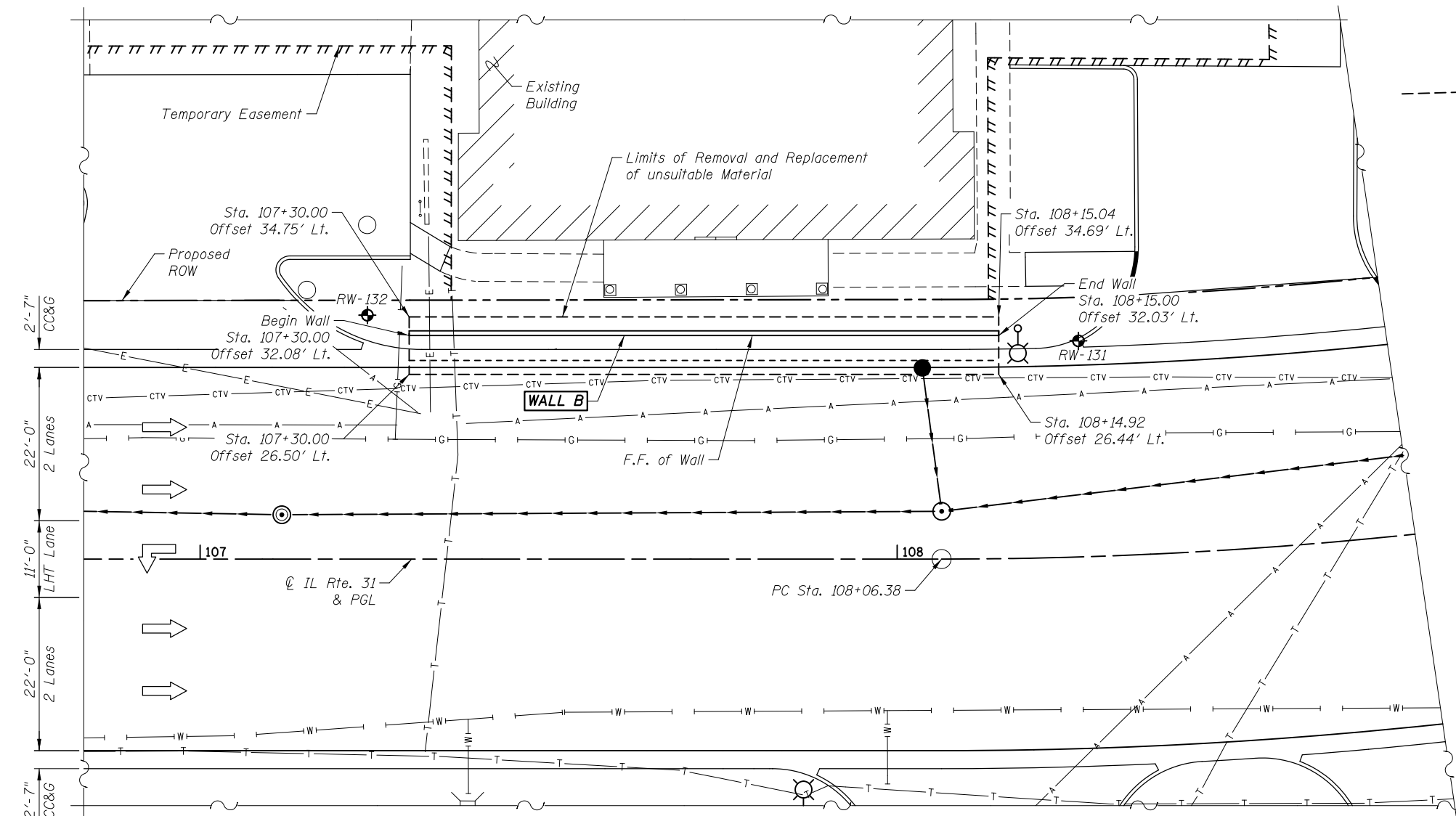
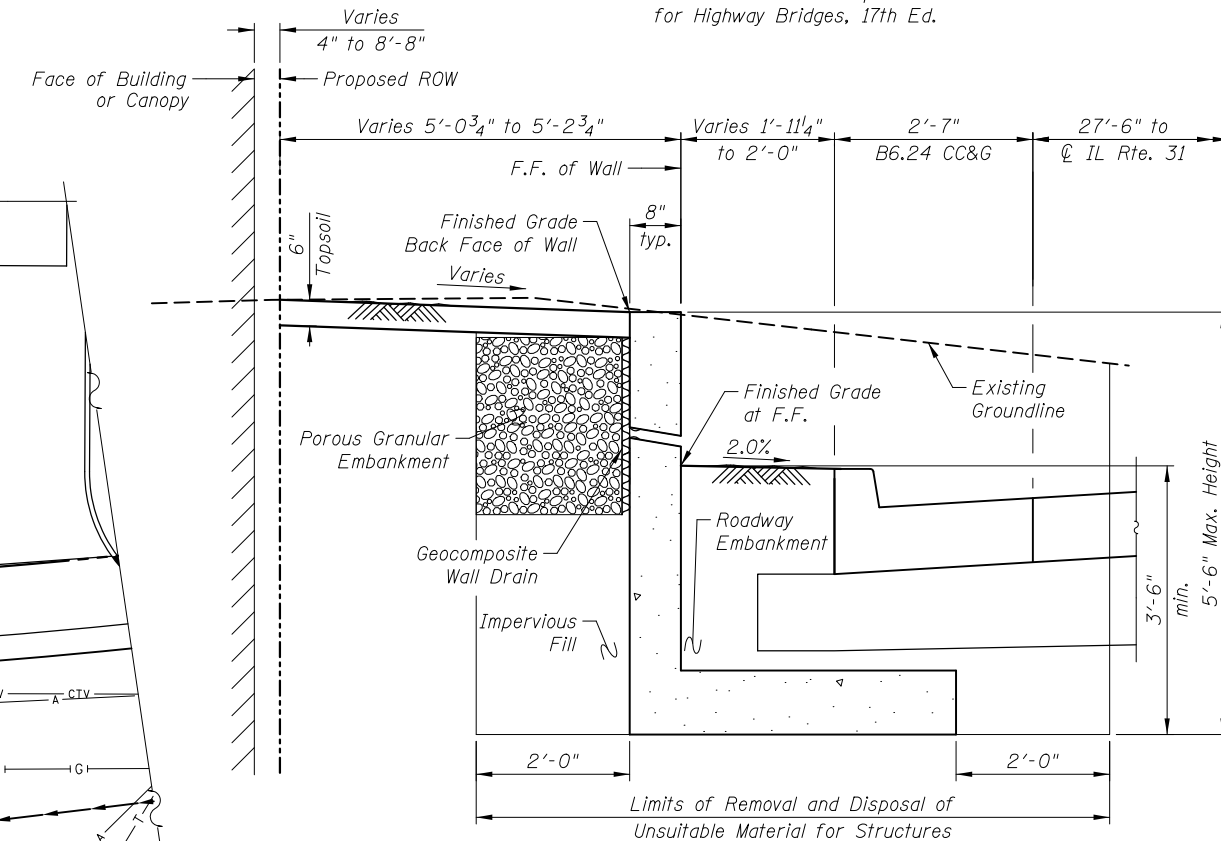
ITEM	UNIT	TOTAL QUANTITY
Porous Granular Embankment	Cu. Yd.	13
Removal & Disposable of Unsuitable Materials for Structures	Cu. Yd.	155
Concrete Structures	Cu. Yd.	20.2
Reinforcement Bars, Epoxy Coated	Pound	1,600
Geocomposite Wall Drain	Sq. Yd.	19

**GENERAL NOTES:**

1. Reinforcement bars designated (E) shall be epoxy coated.

**DESIGN SPECIFICATIONS**

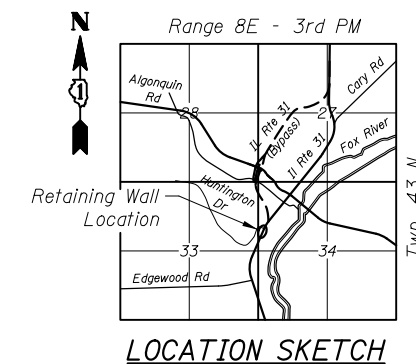
2002 AASHTO Standard Specifications for Highway Bridges, 17th Ed.



**LEGEND**

- Soil Borings
- Existing Aerial Lines
- Existing Telephone
- Existing Gasline
- Existing Electrical
- Existing Cable
- Existing Water
- Proposed Storm Sewer

Notes:  
 Offsets are measured from the  $\phi$  of IL Rte. 31 to the Front Face of Wall.  
 F.F. - Front Face  
 B.F. - Back Face



**GENERAL PLAN AND ELEVATION**  
**WALL B; IL RTE 31**  
**SECTION 18A-2, McHENRY COUNTY**  
**STA. 107+30 TO STA. 108+15**

4:22:41 PM  
 5/2/2012  
**CIVILTECH**  
 450 E Devon Ave, Suite 300  
 Itasca, Illinois 60143  
 Tel: 630.773.3900 Fax: 630.773.3975  
 www.civiltechinc.com

DRAWN - M. LANGE  
 DESIGNED - M. LANGE  
 CHECKED - G. HATLESTAD  
 DATE - 5/3/2012

**STATE OF ILLINOIS**  
**DEPARTMENT OF TRANSPORTATION**

**GENERAL PLAN AND ELEVATION**  
**WALL B; IL RTE 31**

SHEET NO. WB1 OF WB3 SHEETS

O.R. RTE.	SECTION	COUNTY	TOTAL SHEETS	SHEET NO.
0003	18A-2	McHENRY	825	594
				CONTRACT NO. 60F72
ILLINOIS FED. AID PROJECT				