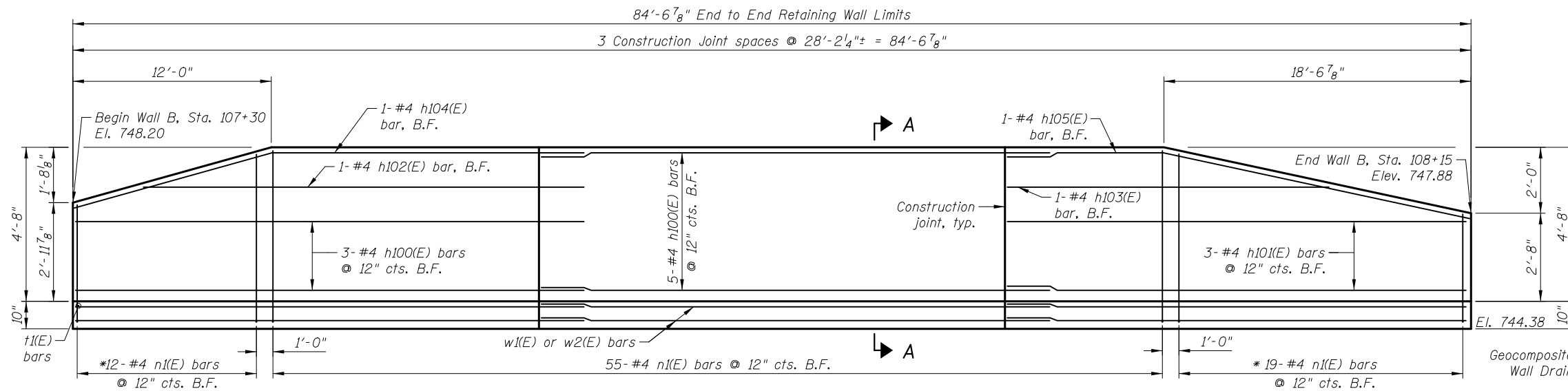


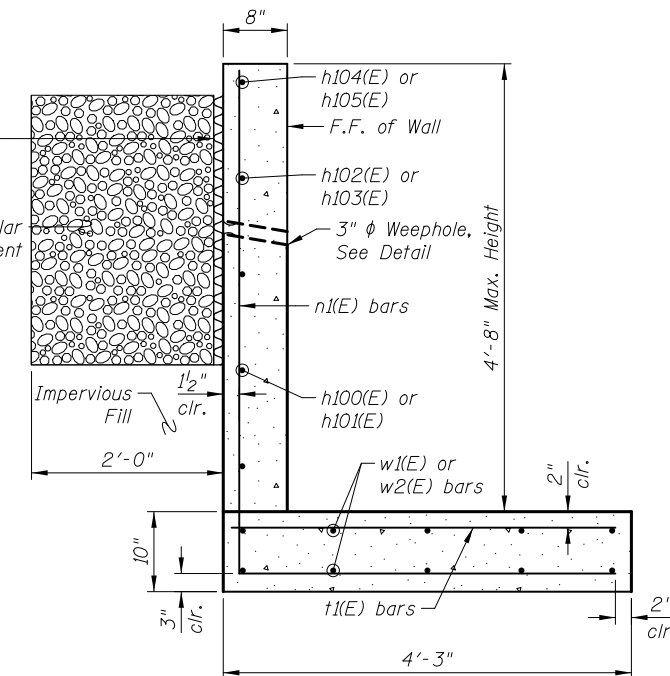
MINIMUM BAR LAP

#4 bar = 2'-7"

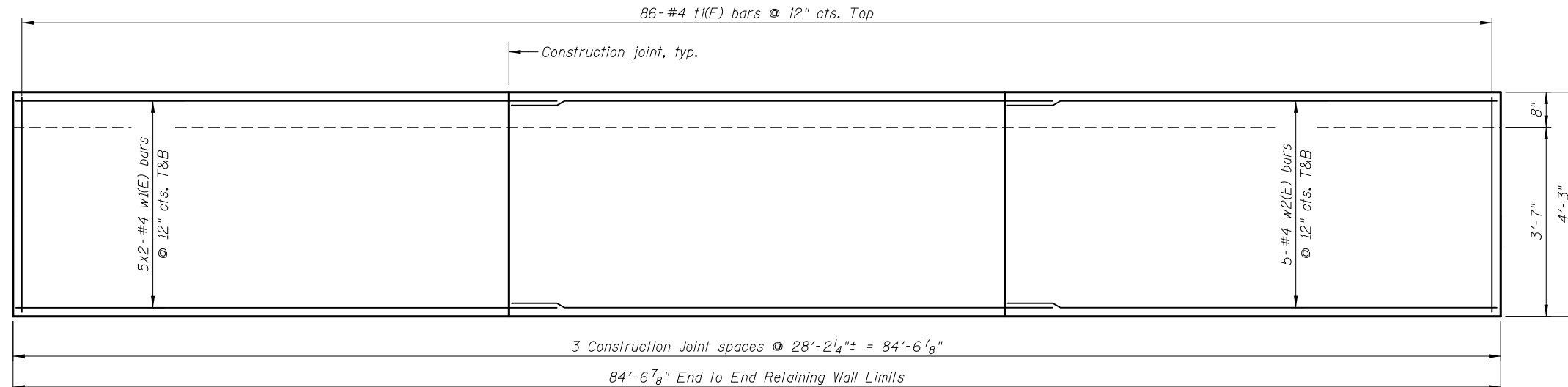


ELEVATION

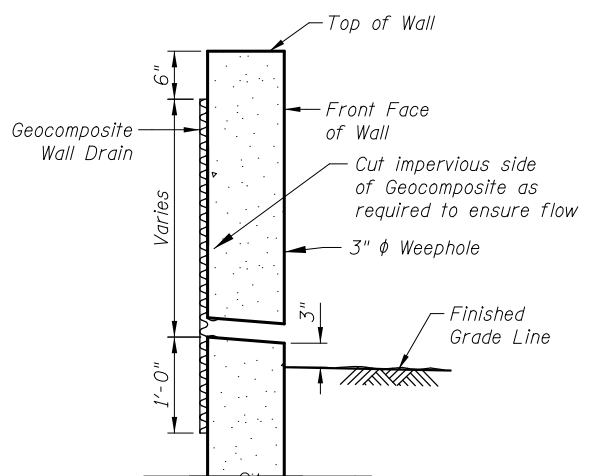
* Cut to fit.



SECTION A-A

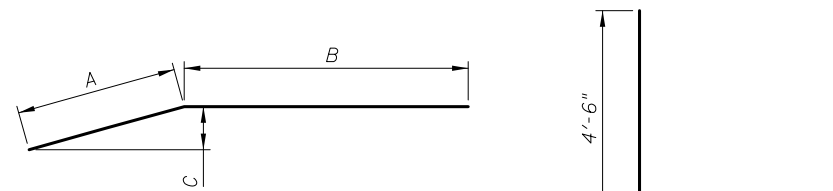


PLAN



WEEP HOLE DRAIN DETAIL

Weep hole spacing shall be at 8'-0" horizontally



Bar	A	B	C
h104(E)	12'-0"	18'-11"	1'-7 7/8"
h105(E)	18'-7"	9'-5"	1'-11 7/8"

BARS h104(E) & h105(E)

n1(E) BAR

BILL OF MATERIAL

Bar	No.	Size	Length	Shape
h100(E)	8	#4	30'-9"	—
h101(E)	3	#4	27'-10"	—
h102(E)	1	#4	26'-8"	—
h103(E)	1	#4	19'-6"	—
h104(E)	1	#4	30'-11"	—
h105(E)	1	#4	28'-0"	—
n1(E)	86	#4	8'-5"	L
t1(E)	86	#4	3'-11"	—
w1(E)	20	#4	30'-9"	—
w2(E)	10	#4	27'-10"	—
Item		Unit	Quantity	
Concrete Structures		Cu. Yd.	20.2	
Reinforcement Bars, Epoxy Coated		Pound	1,600	

4:22:42 PM J:\2154\cad\sheet\Roadway\20-Structures & Walls\07-Wall B\WB-60F72-02-WD.dgn 5/2/2012

CIVILTECH
 450 E Devon Ave, Suite 300
 Itasca, Illinois 60143
 Tel: 630.773.3900 Fax: 630.773.3975
 www.civiltechinc.com

DRAWN	-	M. LANGE
DESIGNED	-	M. LANGE
CHECKED	-	G. HATLESTAD
DATE	-	5/3/2012

**STATE OF ILLINOIS
 DEPARTMENT OF TRANSPORTATION**

**WALL DETAILS
 WALL B; IL RTE 31**

SHEET NO. WB2 OF WB3 SHEETS

O.R. RTE.	SECTION	COUNTY	TOTAL SHEETS	SHEET NO.
0003	18A-2	MCHENRY	825	595
CONTRACT NO. 60F72				

ILLINOIS FED. AID PROJECT