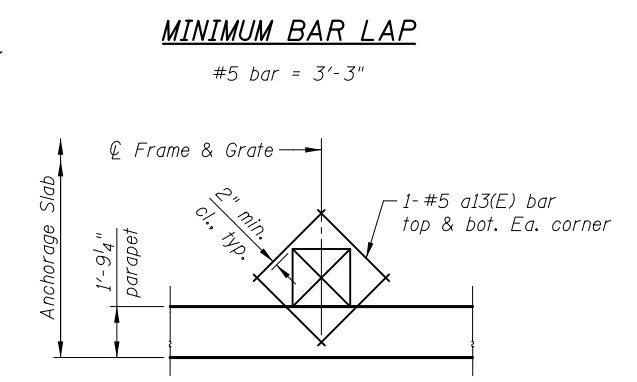


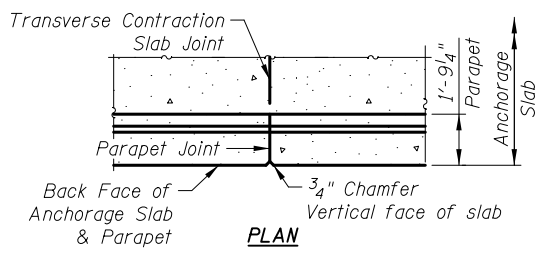
**PLAN**

\* Indicates dowels into PCC Shld. See Transverse Expansion Joint Detail, sheet WC5.

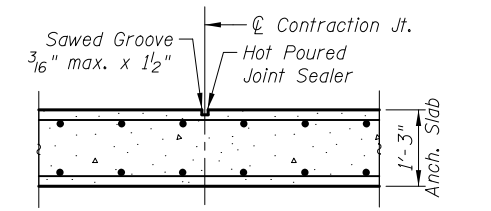


**DETAIL OF REINFORCEMENT AT DRAINAGE STRUCTURES**

(Cut longitudinal bars to clear drainage structure)



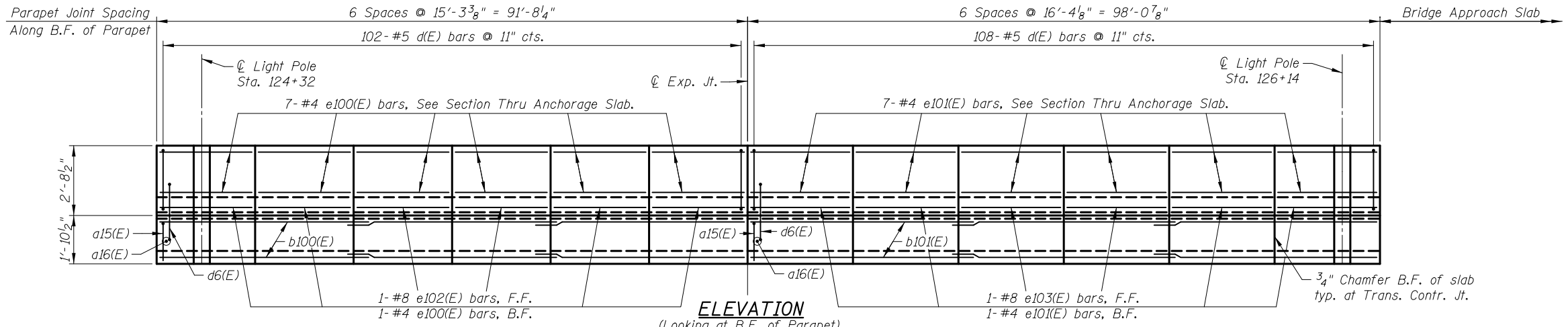
**PLAN**



**SECTION**

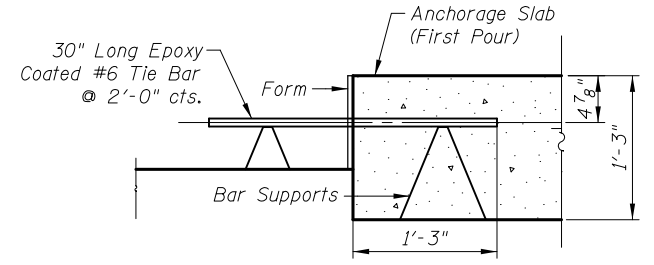
**TRANSVERSE CONTRACTION JOINT**

See Art. 420.05(c) of Standard Specifications

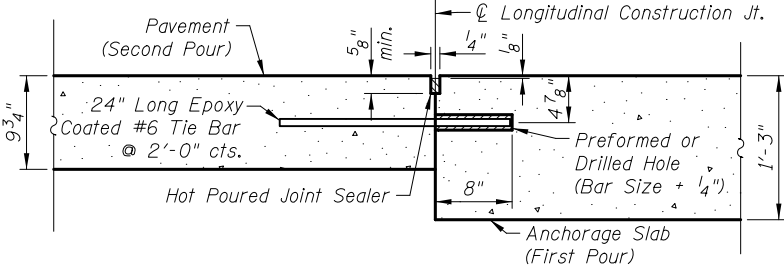


**ELEVATION**

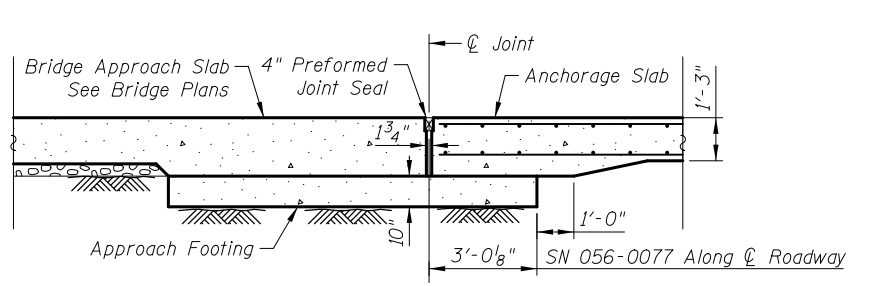
(Looking at B.F. of Parapet)



**TIE BAR FORMED IN PLACE**



**TIE BAR GROUTED IN PLACE**



**SECTION A-A**

Notes:  
 See sheet WC5 for Bill of Material, Light Pole Foundation details and Section Thru Anchorage Slab.  
 See sheet WC5 for Transverse Expansion Joint details.  
 Field Cut bars as required around Frame and Grate.  
 Bars indicated thus 11x2-#5 etc. indicate 11 lines of bars at 2 lengths per line.  
 Joints in the adjacent pavement shall be in line with the anchorage slab joints.

4/23/03 PM 4:23:03 PM J:\2154\cad\sheet\Roadway\20-Structures & Walls\08-Wall C\0562500-60F72-03-AND-rev.dgn

450 E Devon Ave, Suite 300  
 Itasca, Illinois 60143  
 Tel: 630.773.3900 Fax: 630.773.3975  
 www.civiltechinc.com

DRAWN	- K. HODGEN
DESIGNED	- D. ATKINS
CHECKED	- G. HATLESTAD
DATE	- 5/3/2012

**STATE OF ILLINOIS**  
**DEPARTMENT OF TRANSPORTATION**

**ANCHORAGE SLAB**  
**WALL C: IL RTE 31**  
**STRUCTURE NO. 056-2500**  
 SHEET NO. WC3 OF WC8 SHEETS

O.R. RTE.	SECTION	COUNTY	TOTAL SHEETS	SHEET NO.
0003	18A-2	MCHENRY	825	599
CONTRACT NO. 60F72				
ILLINOIS FED. AID PROJECT				