

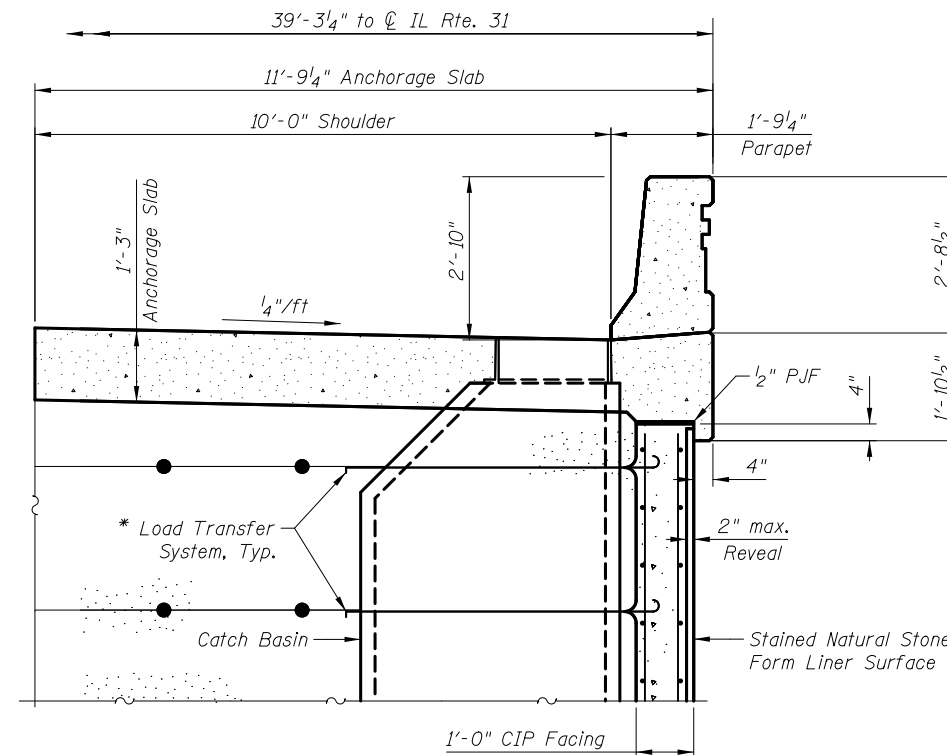
TYPICAL WALL SECTION
(Looking North)

The MSE wall supplier's internal stability design shall account for the anchorage slab's bearing pressure surcharge of 1.0 ksf and horizontal sliding force of 0.5 kips/ft. of wall.

**MSE WALL
BILL OF MATERIAL**

ITEM	UNIT	TOTAL
Form Liner Textured Surface	Sq. Ft.	3,744
Geocomposite Wall Drain	Sq. Yd.	36
Mechanically Stabilized Earth Retaining Walls	Sq. Ft.	4,275
Staining Concrete Structures	Sq. Yd.	416

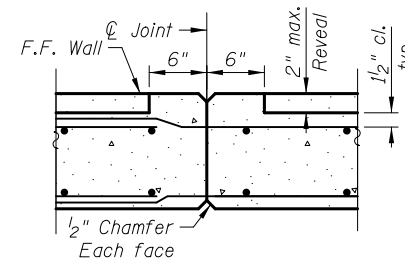
Remove unsuitable material, and backfill with embankment, See Roadway Plans.



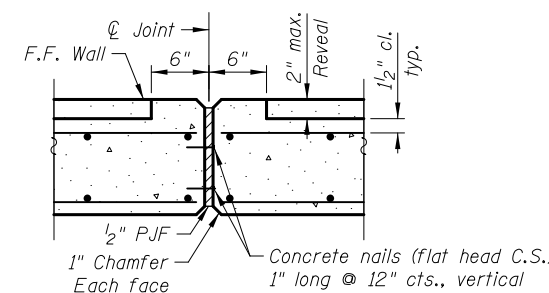
SECTION THRU DRAINAGE STRUCTURE

* M.S.E. supplier to design load transfer system to accommodate concrete pipe and catch basin

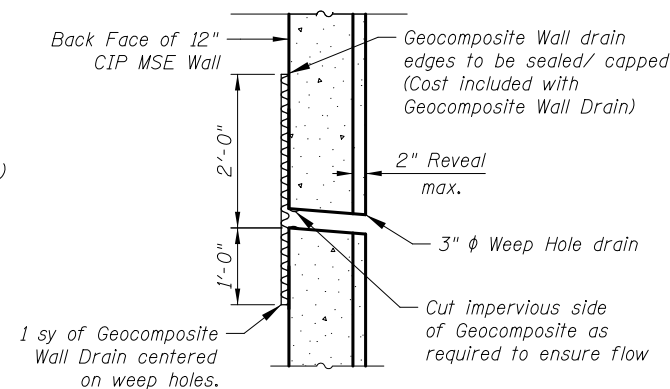
Notes:
For Frame and Grate type, Catch Basin type, and rim elevations, see Drainage and Utility Plans.
See sheet WD3 for dimensions and reinforcement of Anchorage Slab.
See sheet WD6 for Form Liner Textured Surface details.



CONSTRUCTION JOINT



EXPANSION JOINT



WEEP HOLE DRAIN DETAIL

Weep holes shall be spaced at 8'-0" horizontally

4/23/35 PM
 I:\2154\cad\sheet\Roadway\20-Structures & Walls\05-Wall\0562501-60F72-02-MWD_rev.dgn
 5/2/2012