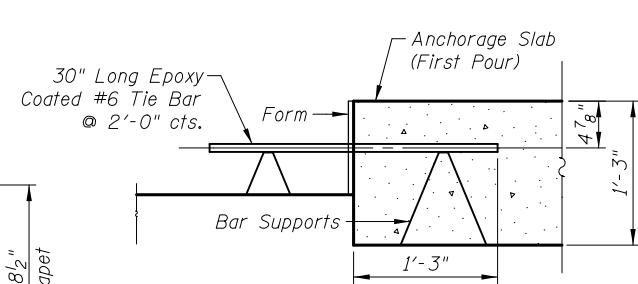
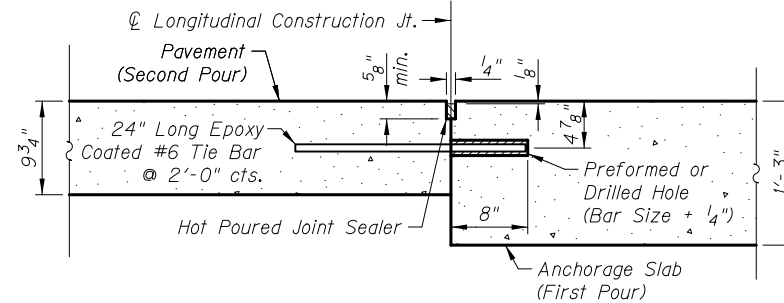


SECTION THRU ANCHORAGE SLAB

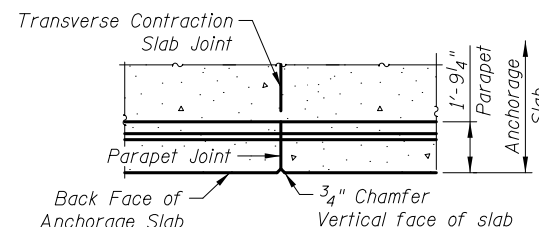


TIE BAR FORMED IN PLACE

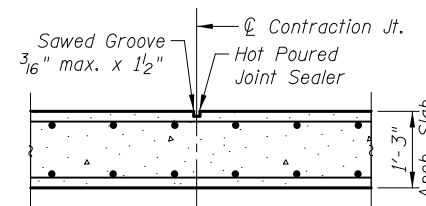


TIE BAR GROUTED IN PLACE

LONGITUDINAL CONSTRUCTION JOINT



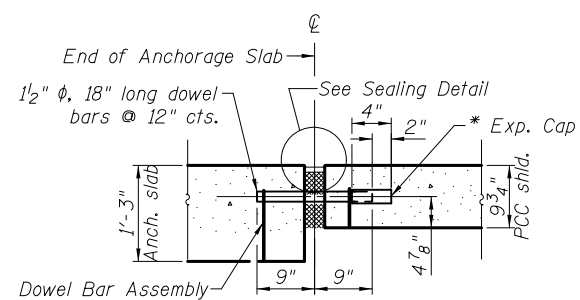
PLAN



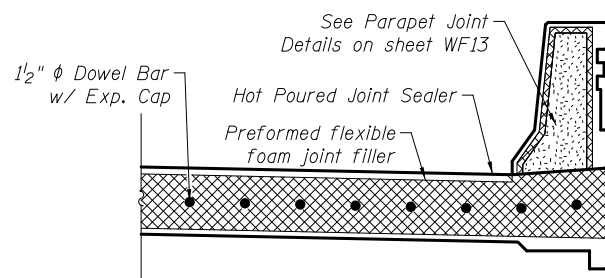
SECTION

TRANSVERSE CONTRACTION JOINT

See Art. 420.05(c) of Standard Specifications



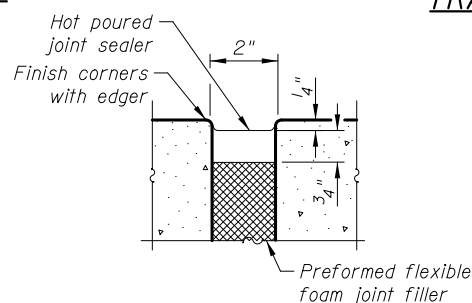
TRANSVERSE EXP. JOINT



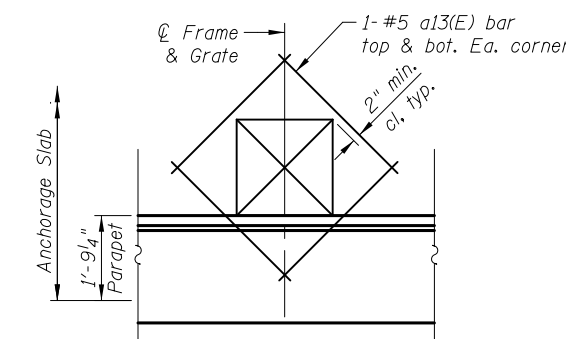
TRANSVERSE EXPANSION JOINT SECTION

Expansion Joint and Dowel Bars included in the cost of Concrete Superstructures.

* Expansion caps shall be installed on the exposed end of each dowel bar once the header has been removed and the joint filler material has been installed.



SEALING DETAIL



DETAIL A

(Cut longitudinal reinforcement to clear drainage structure)

Notes:
See sheet WF3 for Parapet Form Liner Details.
See sheet WF13 for Bill of Material and Section At Drainage Structure.

5/2/2012 4:24:58 PM I:\2154\cad\sheet\Roadway\20-Structures & Walls\1-Wall F\0562505-60F72-12-AND-REV.dgn