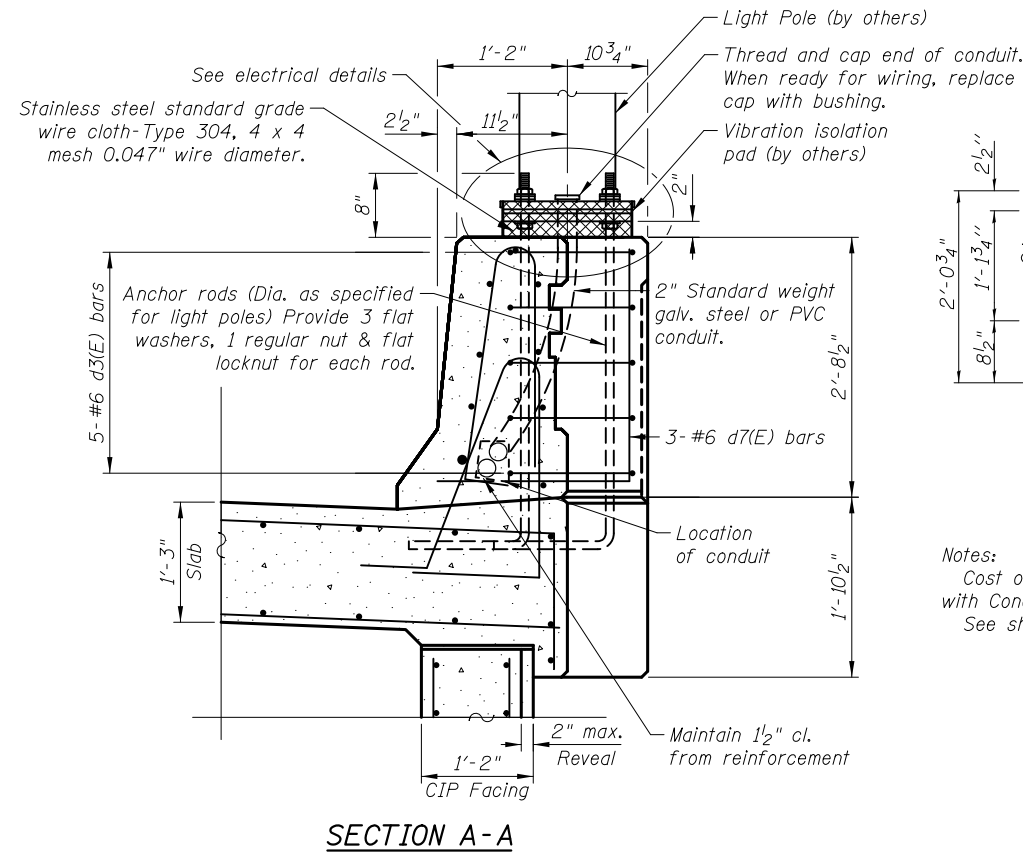
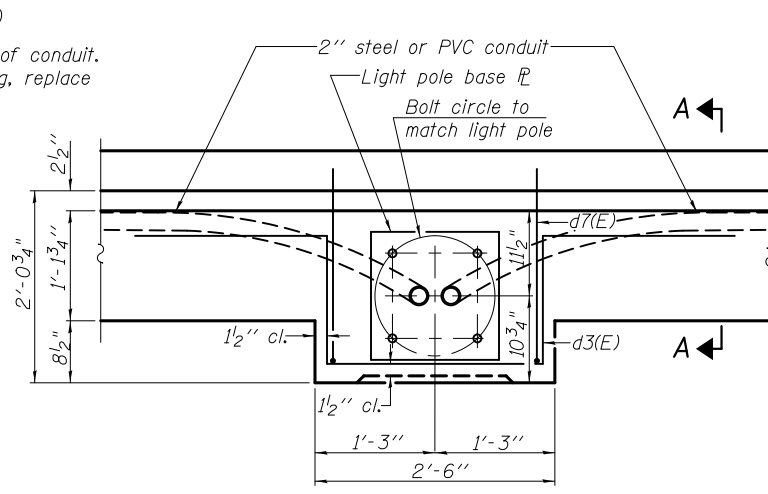


4:24:59 PM 4/2/2012 I:\2164\cad\sheet\Roadway\20-Structures & Walls\Wall F\0562505-60F72-13-AND\_rev.dgn

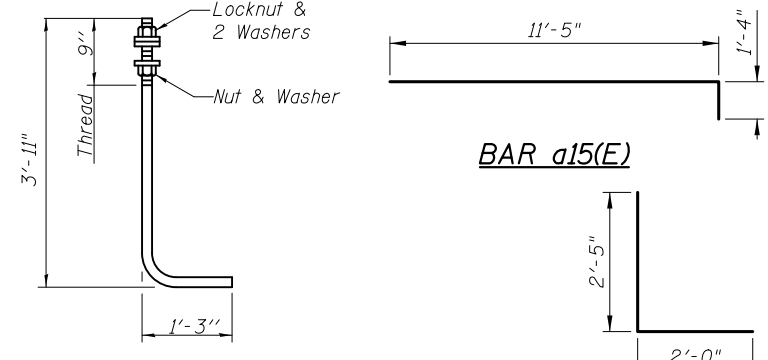


**SECTION A-A**



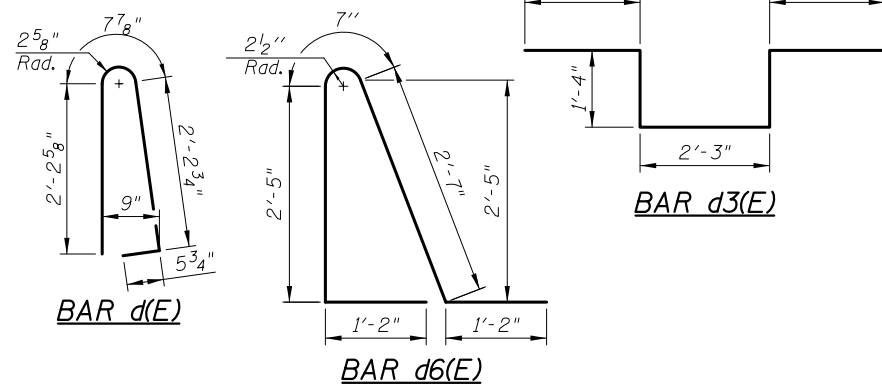
**LIGHT POLE FOUNDATION PLAN**

Notes:  
 Cost of anchor rods and conduit in Light Pole Foundation included with Concrete Superstructure.  
 See sheet WF3 for Form Liner Textured Surface, Special details.



**ANCHOR ROD**

Diameter as specified for light poles.  
 (ASTM F 1554 Grade 105)



**BAR d(E)**

**BAR d6(E)**

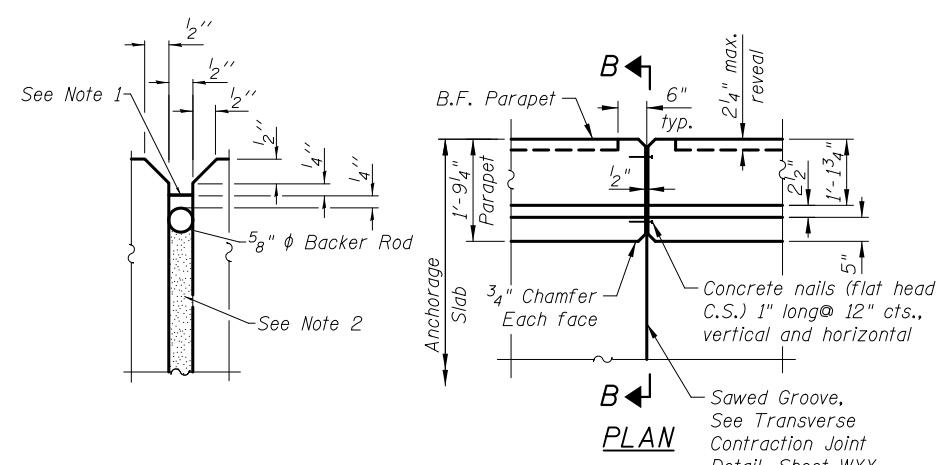
**BAR d3(E)**

**BAR d7(E)**

**BAR a15(E)**

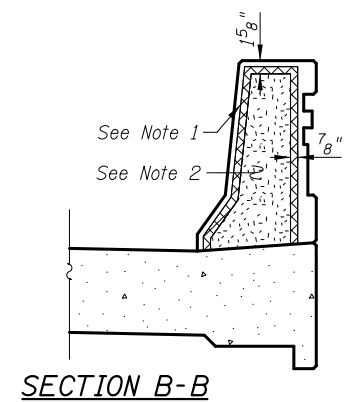
**BILL OF MATERIAL**

Bar	No.	Size	Length	Shape
a13(E)	48	#5	3'-6"	—
a15(E)	913	#6	12'-9"	—
a16(E)	913	#5	11'-5"	—
b135(E)	448	#5	29'-2"	—
b136(E)	420	#5	31'-2"	—
d(E)	913	#5	5'-7"	—
d3(E)	20	#6	8'-11"	—
d6(E)	913	#5	7'-11"	—
d7(E)	12	#6	4'-5"	—
e135(E)	8	#4	13'-8"	—
e136(E)	384	#4	15'-8"	—
e137(E)	24	#4	17'-8"	—
e138(E)	1	#8	13'-8"	—
e139(E)	48	#8	15'-8"	—
e140(E)	3	#8	17'-8"	—
	Item		Unit	Quantity
	Concrete Superstructures		Cu. Yd.	581.4
	Protective Coat		Sq. Yd.	1,313
	Reinforcement Bars, Epoxy Coated		Pound	75,580
	Form Liner Textured Surface, Special		Pound	1,155

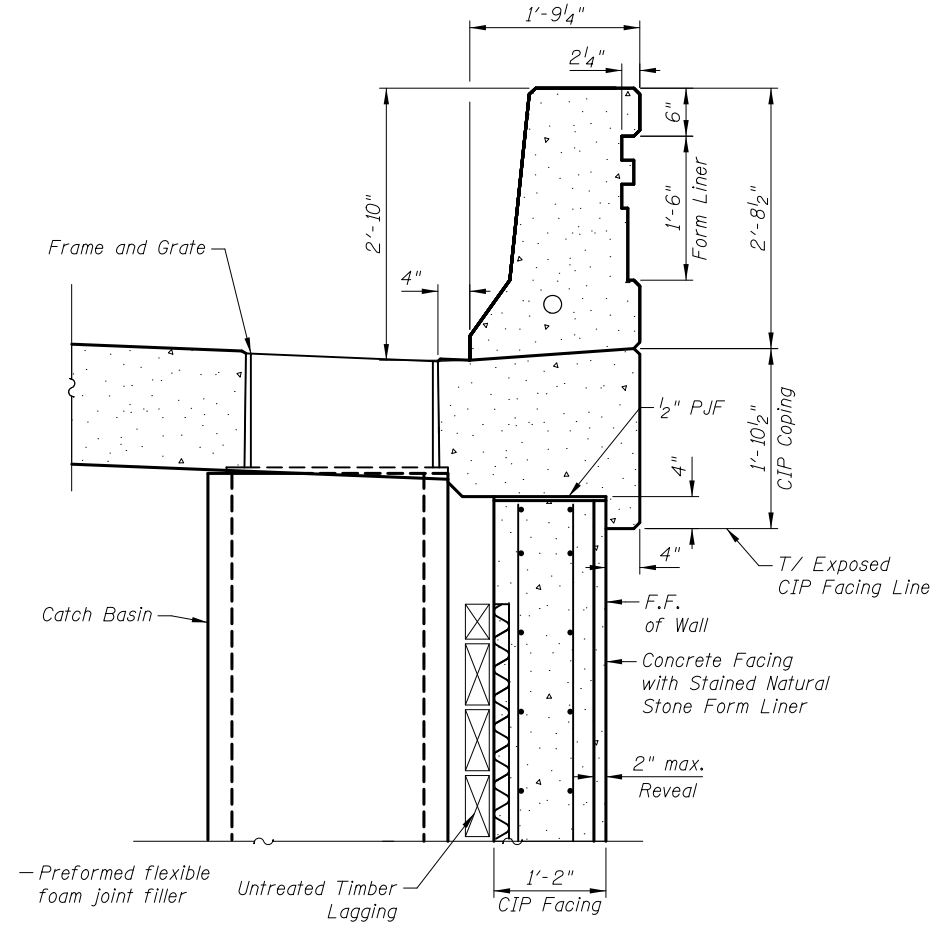


**PARAPET JOINT DETAILS**

Parapet Joint Notes:  
 1. Non-staining gray one component non-sag elastomeric gun grade polyurethane sealant meeting the requirements of ASTM C-920, Type S, Grade NS, Class 25, use T with a 5/8" backer rod.  
 2. 1/2" Preformed Self-Expanding Cork Joint Filler according to Article 1051.07 of the Std. Spec. Cost included with Concrete Superstructure.



**SECTION B-B**



**SECTION AT DRAINAGE STRUCTURE**

Note:  
 See sheet WF3 for Parapet Form Liner Details.  
 See Drainage and Utility Plans for Catch Basin and Frame and Grate Details.


 450 E Devon Ave, Suite 300  
 Itasca, Illinois 60143  
 Tel: 630.773.3900 Fax: 630.773.3975  
 www.civiltechinc.com

DRAWN	- C. BRABAND
DESIGNED	- D. ATKINS
CHECKED	- G. HATLESTAD
DATE	- 5/3/2012

**STATE OF ILLINOIS**  
**DEPARTMENT OF TRANSPORTATION**

**ANCHORAGE SLAB DETAILS II**  
**WALL F; ILLINOIS ROUTE 31**  
**STRUCTURE NO. 056-2505**  
 SHEET NO. WF13 OF WF15 SHEETS

O.R. RTE.	SECTION	COUNTY	TOTAL SHEETS	SHEET NO.
0003	18A-2	MCHENRY	825	632
			CONTRACT NO. 60F72	
ILLINOIS FED. AID PROJECT				