

Bench Mark: Control Point 32, Iron Rod, Station 178+93.08, offset 60.62 feet left; Elev. 800.00.

Existing Structure: None

GENERAL NOTES

- I. Reinforcement bars designated (E) shall be epoxy coated.

DESIGN SPECIFICATIONS

2002 AASHTO Standard Specifications for Highway Bridges, 17th Ed.

DESIGN STRESSES

FIELD UNITS

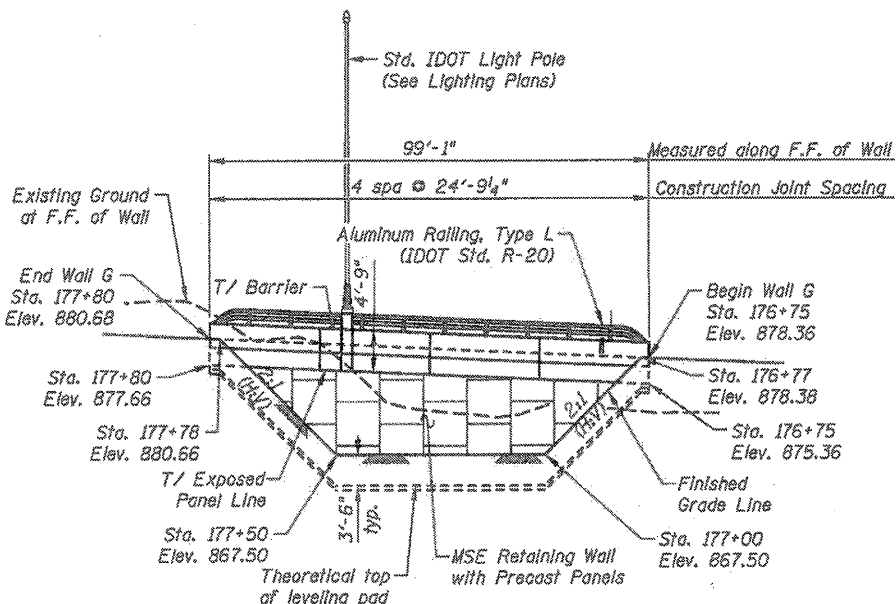
$f'c = 3,500$ psi
 $f_y = 60,000$ psi (Reinforcement)

PRECAST UNITS

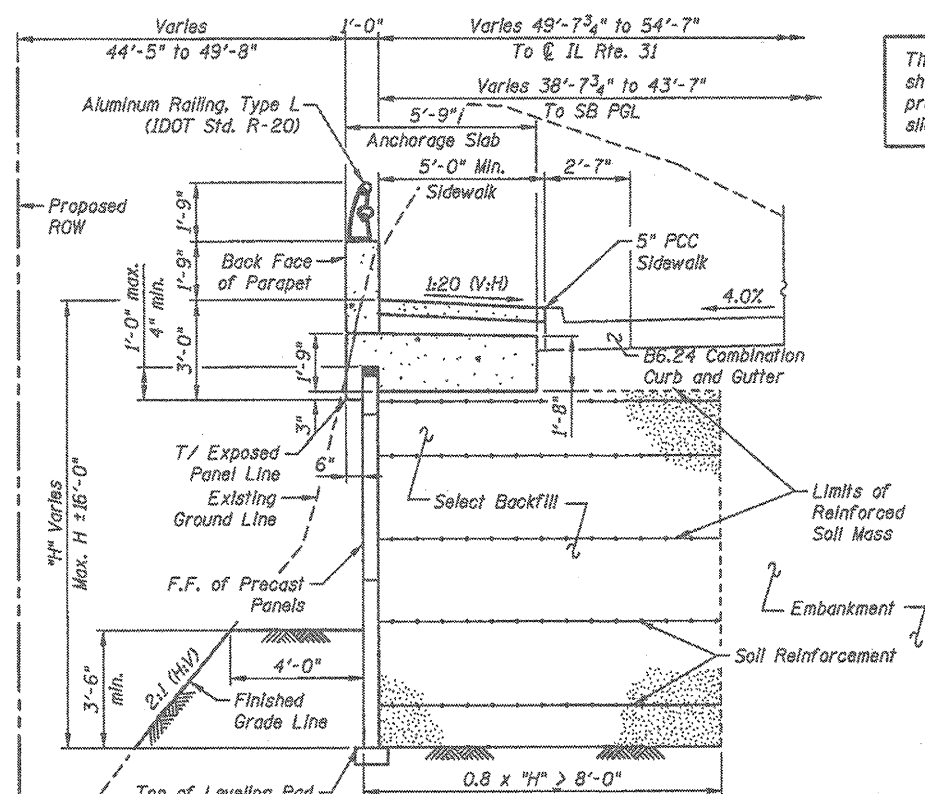
$f'c = 4,500$ psi (Precast Panels)

LEGEND

- ◆ Soil Borings
- Existing Storm Sewer
- T- Existing Telephone
- G- Existing Gasline
- Proposed Storm Sewer
- ↔ Direction of Ditch Flow

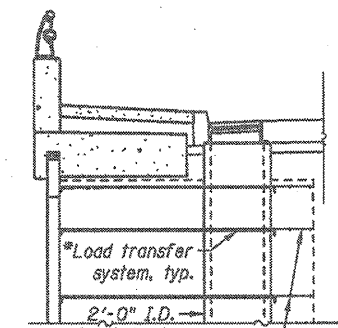


ELEVATION
 (Looking west at front face of wall)



TYPICAL WALL SECTION

The MSE wall supplier's internal stability design shall account for the anchorage slab's bearing pressure surcharge of 1.0 ksf and horizontal sliding force of 0.5 kips/ft of wall.



LOAD TRANSFER SYSTEM AROUND DRAINAGE

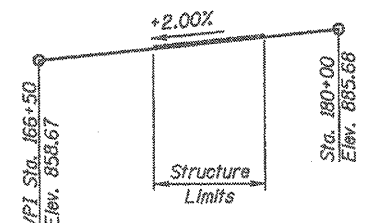
*MSE supplier to design load transfer system to accommodate catch basin.

CIVILTECH ENGINEERING, INC.
 GREGORY J. HATLESTAD, S.E.



GREGORY J. HATLESTAD, S.E.
 # 081-005562

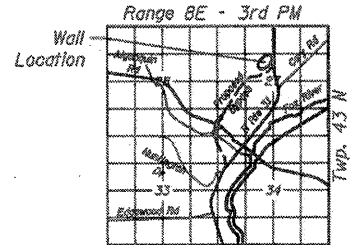
EXP 11/30/12
 DATE 3/15/12



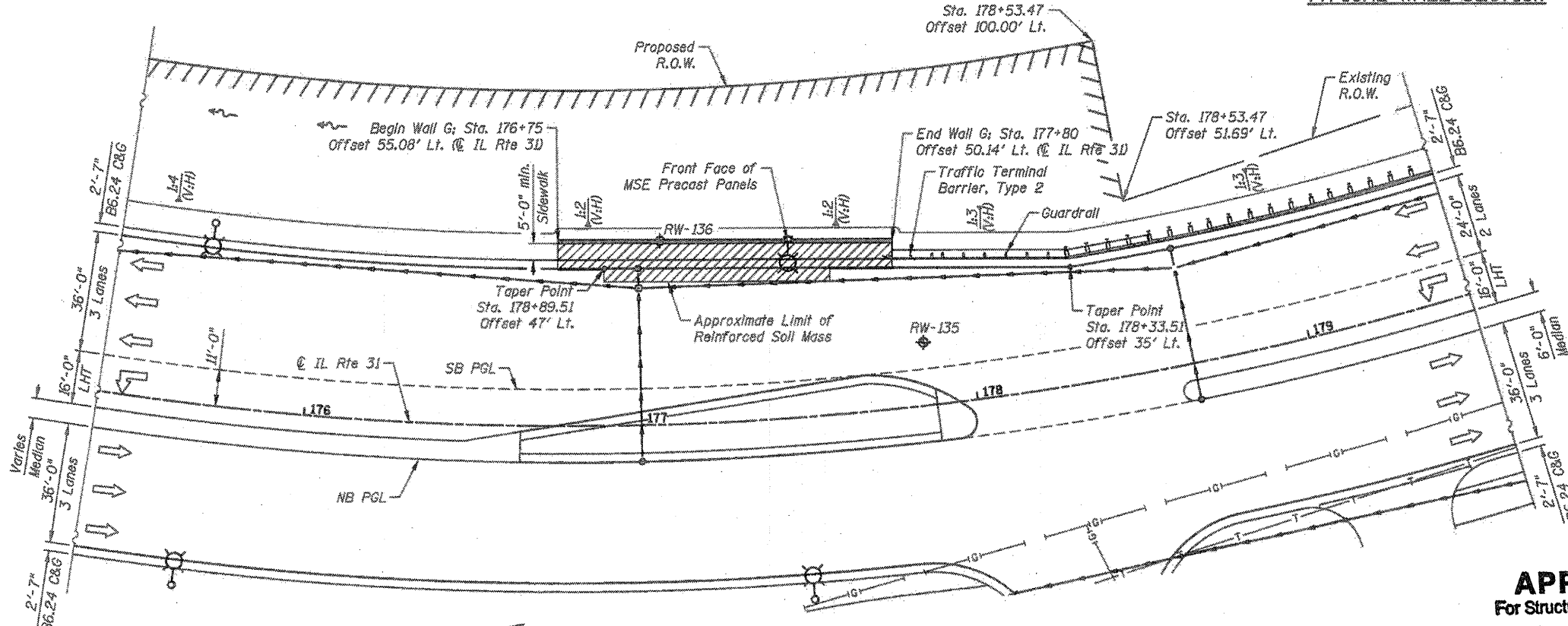
PROPOSED SB PROFILE
 IL ROUTE 31 SOUTHBOUND

CURVE DATA

$\Delta = 80^\circ 38' 27.05''$ (LT)
 $D = 6^\circ 13' 38.74''$
 $T = 780.83'$
 $L = 1,294.93'$
 $E = 286.67'$
 $R = 920.06'$
 $S.E. = 4.00\%$
 $P.C. = Sta. 166+78.62$
 $P.T. = Sta. 179+73.55$
 $P.I. = Sta. 174+59.44$



LOCATION SKETCH



PLAN

Notes:
 Offsets are measured to the front face (F.F.) of MSE precast panels.

APPROVED
 For Structural Adequacy Only
 [Signature]
 Engineer of Bridges & Structures

GENERAL PLAN AND ELEVATION
WALL G, IL RTE 31, OR 0003
SECTION 18A-2
McHENRY COUNTY
STA. 176+75 TO STA. 177+80
STRUCTURE NO. 056-2506

O.R. RTE.	SECTION	COUNTY	TOTAL SHEETS	SHEET NO.
0003	18A-2	MCHENRY	825	635
				CONTRACT NO. 60F72
ILLINOIS FED. AID PROJECT				

450 E Devon Ave, Suite 300
 Itasca, Illinois 60143
 Tel: 630.773.3900 Fax: 630.773.3875
 www.civiltechinc.com

DRAWN	- K. BOCHNOWSKI
DESIGNED	- M. LANGE
CHECKED	- G. HATLESTAD
DATE	- 3/23/2012

STATE OF ILLINOIS
DEPARTMENT OF TRANSPORTATION

GENERAL PLAN AND ELEVATION
WALL G, IL RTE. 31
STRUCTURE NO. 056-2506
 SHEET NO. W01 OF W05 SHEETS

2/15/2012 3:23:34 PM J:\2012\056-2506\18A-2\Structures & Median\056-2506-0072-01-056-2506.dgn