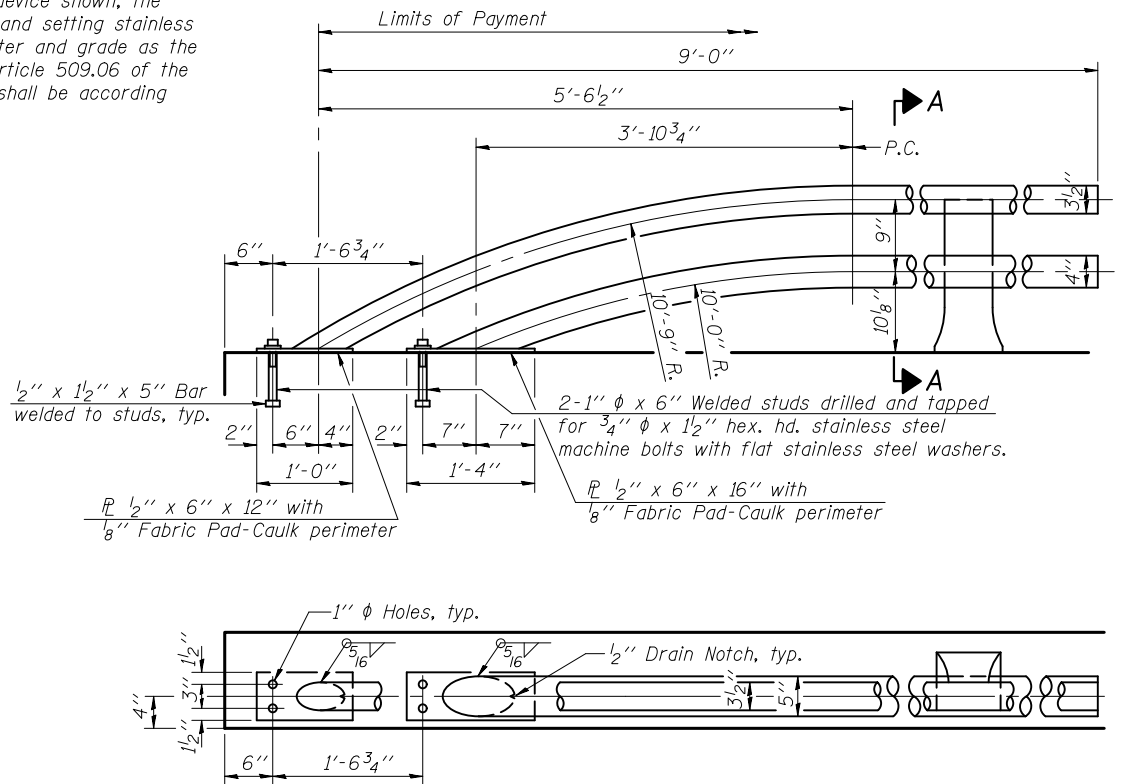
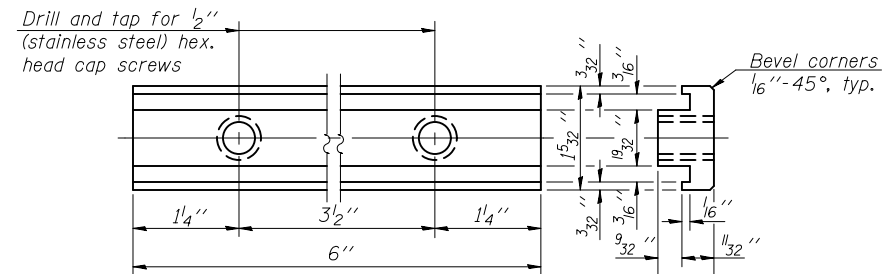


* In lieu of the cast-in-place anchor device shown, the Contractor has the option of drilling and setting stainless steel anchor rods of the same diameter and grade as the specified cap screws according to Article 509.06 of the Standard Specifications. Embedment shall be according to the manufacturer's specifications.

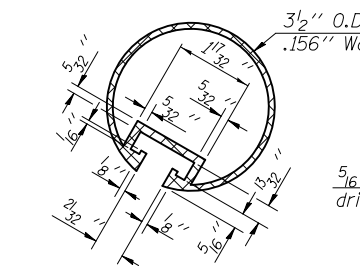


RAIL TERMINAL SECTION

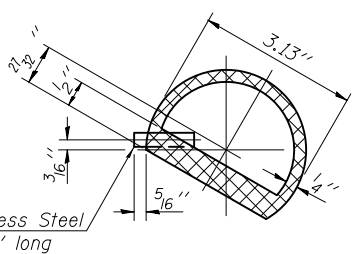
Note: The end rail post shall be set back as required for the terminal rail section.



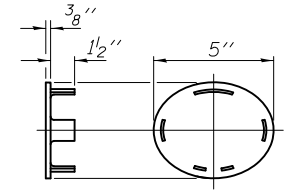
RAIL POST CLAMP BAR
For Top Rail



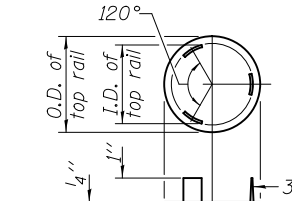
SECTION THRU TOP RAIL



SECTION THRU SPLICE
For Top Rail

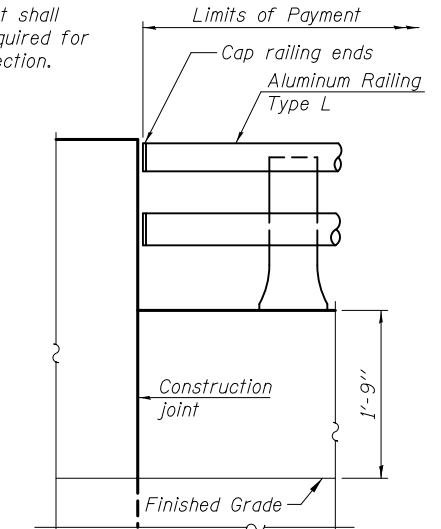


CAST END CAP
For bottom rail
DRIVE FIT TYPE

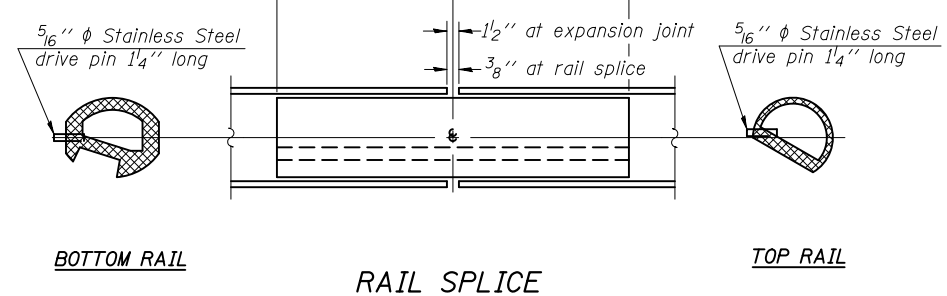


CAST END CAP
For top rail

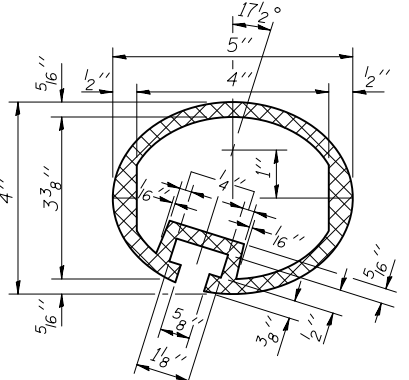
Notes:
All Posts shall be normal to parapet.
All joints in rail shall be spliced per detail.
All exposed rail ends shall be capped per detail.
Provide 1-1/8\"/>



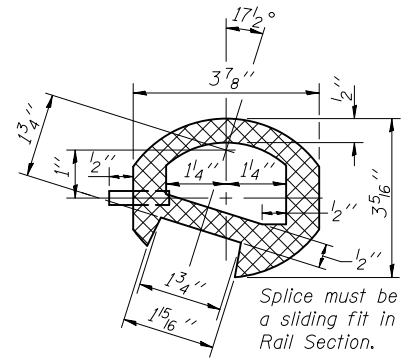
RAIL END TREATMENT FOR TYPE 5 AND 6 TERMINAL



RAIL SPLICE



SEC. THRU ELLIPTICAL RAIL SECTION



SEC. THRU SPLICE

BILL OF MATERIAL

Item	Unit	Quantity
Aluminum Railing, Type L	Foot	77