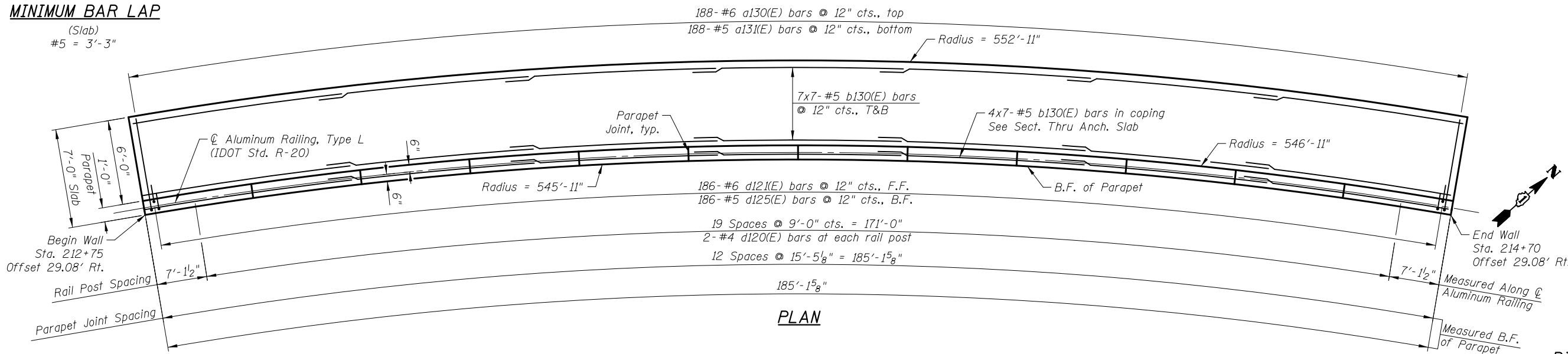
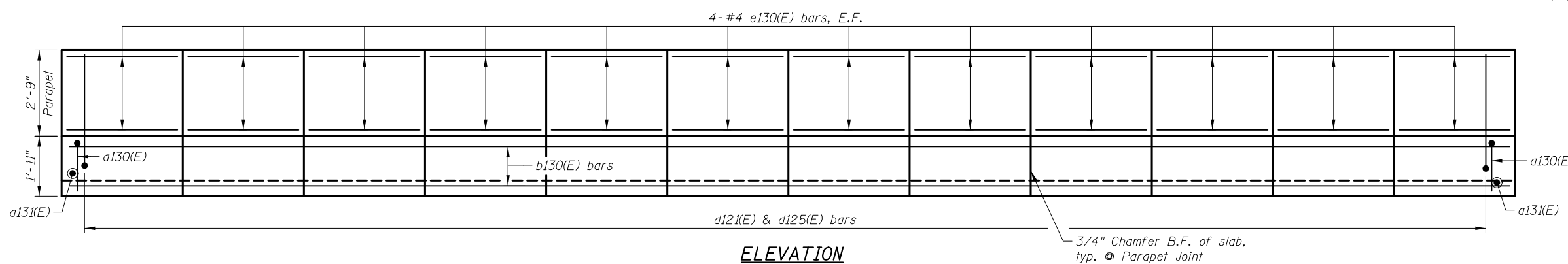


MINIMUM BAR LAP

(Slab)
#5 = 3'-3"



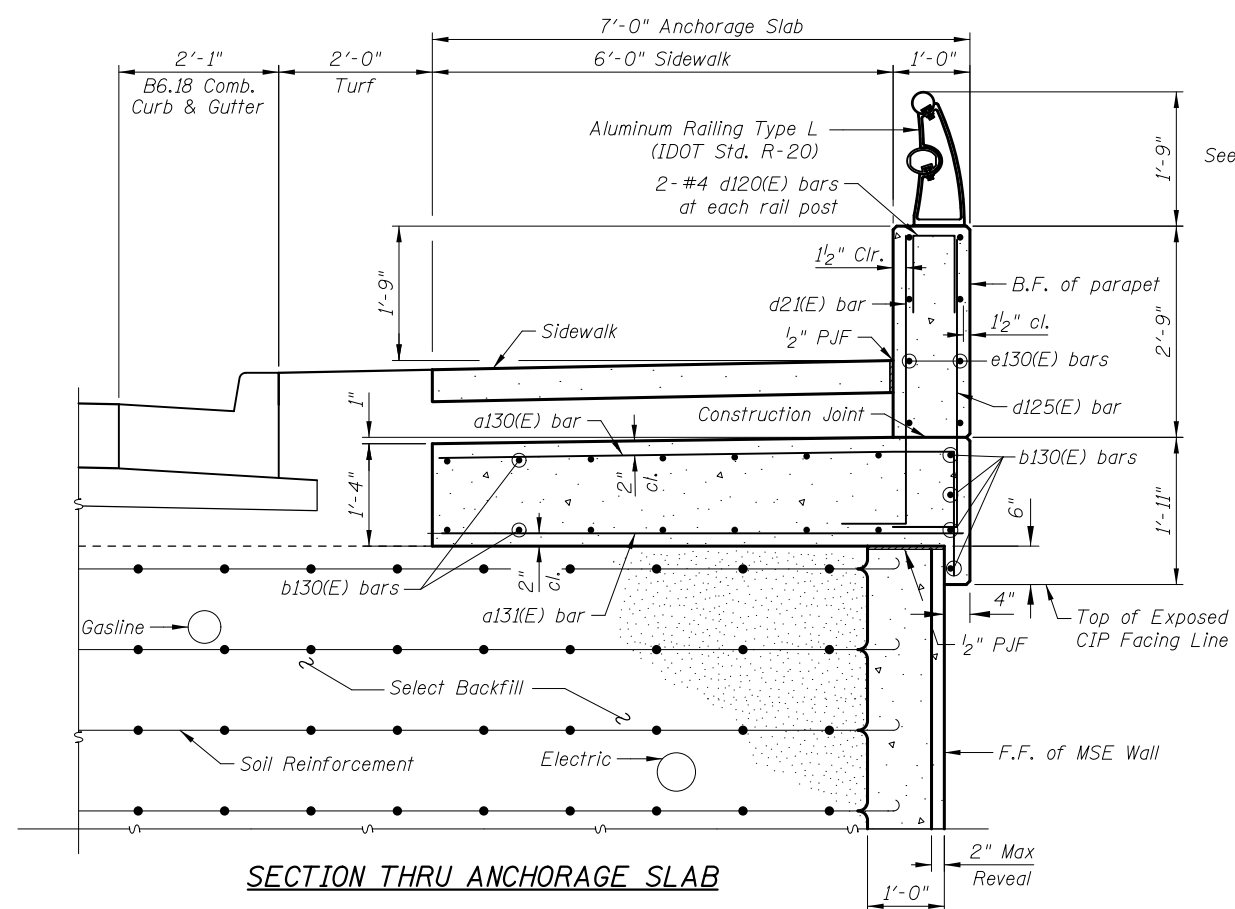
PLAN



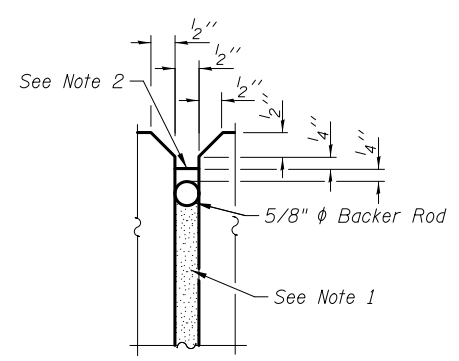
ELEVATION
(Back Face of Parapet)

BILL OF MATERIAL

| Bar | No. | Size | Length | Shape |
|----------------------------------|-----|-------------|-----------------|-------|
| a130(E) | 188 | #6 | 8'-3" | |
| a131(E) | 188 | #5 | 6'-8" | |
| b130(E) | 126 | #5 | 29'-6" | |
| d120(E) | 40 | #4 | 2'-4" | |
| d121(E) | 186 | #6 | 4'-10" | |
| d125(E) | 186 | #5 | 4'-8" | |
| e130(E) | 96 | #4 | 15'-1" | |
| Item | | | | |
| Concrete Superstructures | | Unit | Quantity | |
| Concrete Superstructures | | Cu. Yd. | 86.8 | |
| Protective Coat | | Sq. Yd. | 57 | |
| Reinforcement Bars, Epoxy Coated | | Pound | 10,800 | |



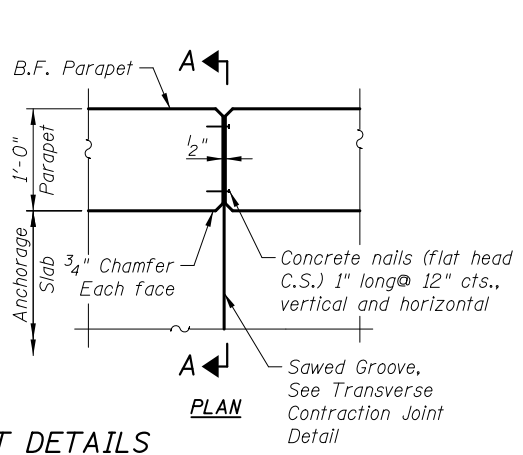
SECTION THRU ANCHORAGE SLAB



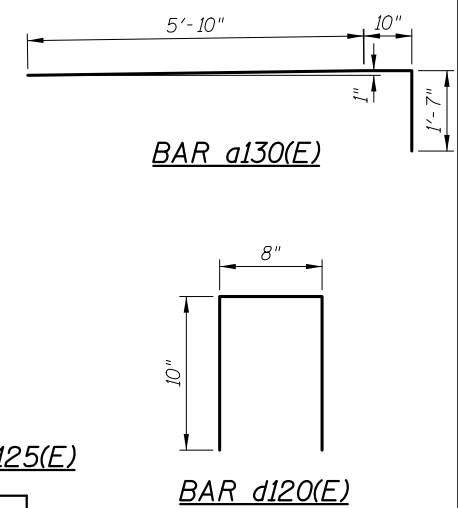
PARAPET JOINT DETAILS

- Parapet Joint Notes:
- Non-staining gray one component non-sag elastomeric gun grade polyurethane sealant meeting the requirements of ASTM C-920, Type S, Grade NS, Class 25, use T with a 5/8" backer rod.
 - 1/2" Preformed Self-Expanding Cork Joint Filler according to Article 1051.07 of the Std. Spec. Cost included with Concrete Superstructure.

Notes:
Bars indicated thus 11x2-#5 etc. indicate 11 lines of bars with 2 lengths per line.
Offsets measured at Back Face of Parapet.



SECTION A-A



BAR d121(E) & d125(E)

BAR a130(E)

BAR d120(E)

| Bar | A |
|---------|-------|
| d121(E) | 1'-0" |
| d125(E) | 10" |

4/27/02 PM 4:25:41 cad:sheet\Roadway\20-Structures & Walls\5-Wall\J0562503-60F72-03-AND_rev.dgn

CIVILTECH
450 E Devon Ave, Suite 300
Itasca, Illinois 60143
Tel: 630.773.3900 Fax: 630.773.3975
www.civiltechinc.com

| | |
|----------|--------------------|
| DRAWN | - D. ATKINS |
| DESIGNED | - M. LANGE |
| CHECKED | - G. HATLESTAD |
| DATE | - JANUARY 27, 2012 |

STATE OF ILLINOIS
DEPARTMENT OF TRANSPORTATION

ANCHORAGE SLAB DETAILS
WALL J: HUNTINGTON DRIVE
STRUCTURE NO. 056-2503
SHEET NO. WJ3 OF WJ6 SHEETS

| | | | | |
|---------------------------|---------|---------|--------------|-----------|
| O.R. RTE. | SECTION | COUNTY | TOTAL SHEETS | SHEET NO. |
| 0003 | 18A-2 | MCHENRY | 825 | 652 |
| CONTRACT NO. 60F72 | | | | |
| ILLINOIS FED. AID PROJECT | | | | |