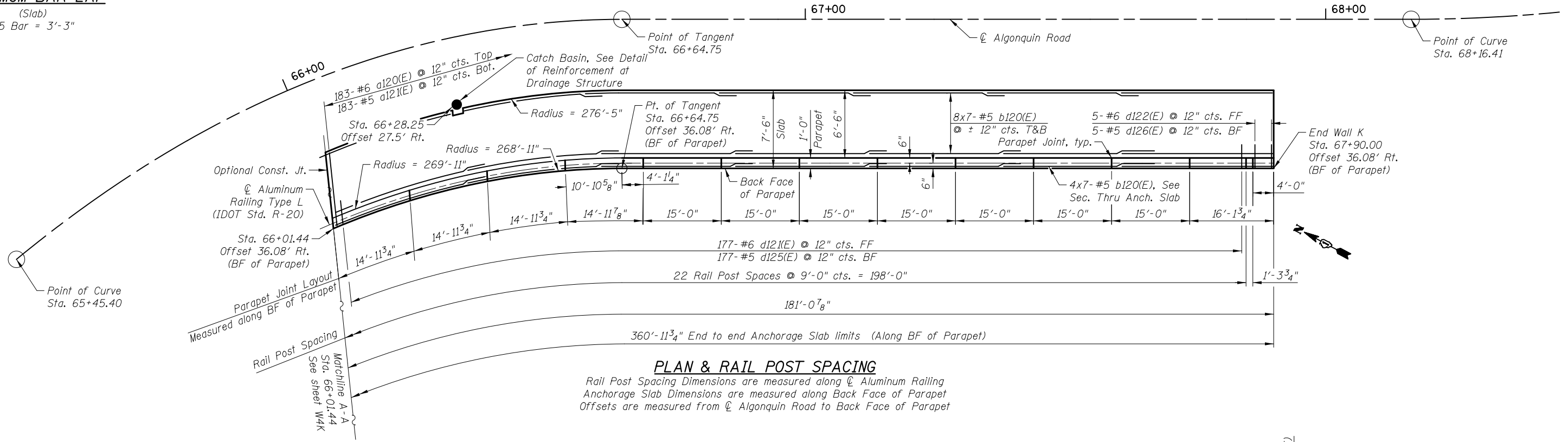


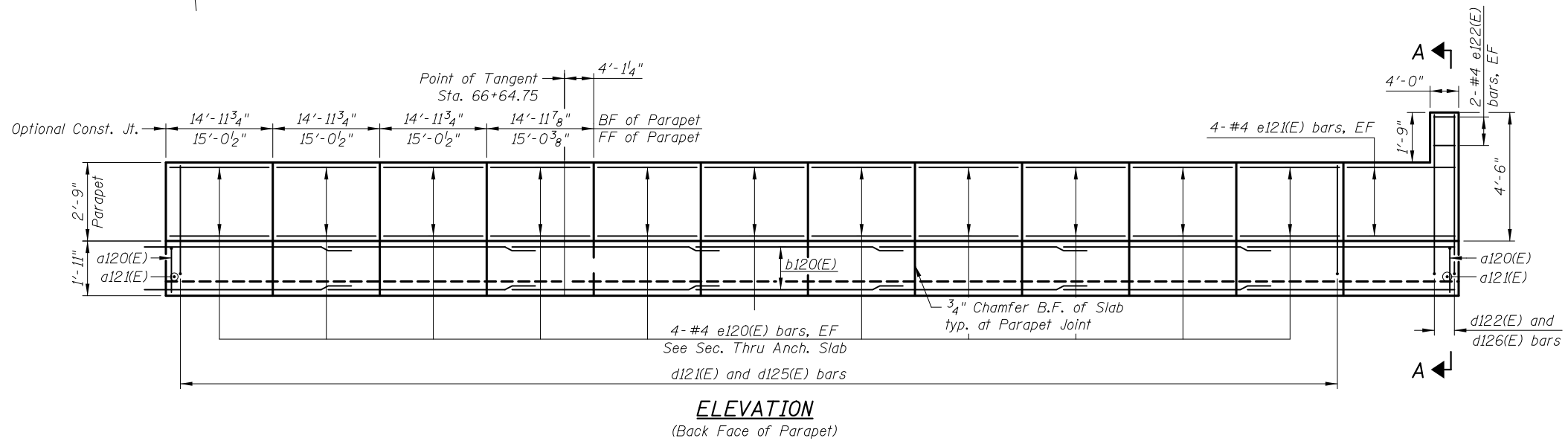
MINIMUM BAR LAP

(Slab)
#5 Bar = 3'-3"



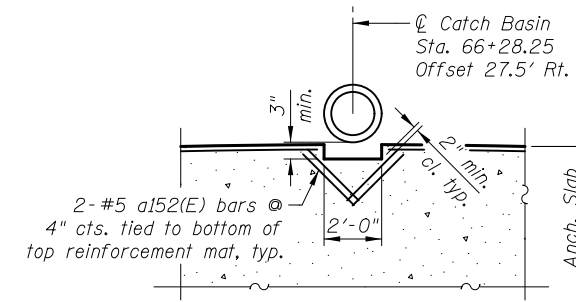
PLAN & RAIL POST SPACING

Rail Post Spacing Dimensions are measured along ϕ Aluminum Railing
Anchorage Slab Dimensions are measured along Back Face of Parapet
Offsets are measured from ϕ Algonquin Road to Back Face of Parapet



ELEVATION

(Back Face of Parapet)



DETAIL OF REINFORCEMENT AT DRAINAGE STRUCTURE

Field cut bars as required around catch basin.

Notes:

See sheet WK4 for Transverse Construction Joint Detail.
See sheet WK6 for Bill of Material, Reinforcement Schedule, Bar Diagrams, and Section A-A.
See sheet WK6 for Light Pole Foundation Details, Section Thru Anchorage Slab, and Parapet Joint Details.
Bars indicated thus 11x2-#5 etc. indicate 11 lines of bars with 2 lengths per line.

5/2/2012 4:27:24 PM J:\2154\cad\sheet\Roadway\20-Structures & Walls\16-Wall K 0562504-60F72-05-AND_rev.dgn

CIVILTECH
450 E Devon Ave, Suite 300
Itasca, Illinois 60143
Tel: 630.773.3900 Fax: 630.773.3975
www.civiltechinc.com

DRAWN	- K. BOCHNOWSKI
DESIGNED	- D. ATKINS
CHECKED	- G. HATLESTAD
DATE	- 5/3/2012

**STATE OF ILLINOIS
DEPARTMENT OF TRANSPORTATION**

**ANCHORAGE SLABS II
WALL K; ALGONQUIN ROAD
STRUCTURE NO. 056-2504**

SHEET NO. WK5 OF WK9 SHEETS

O.R. RTE.	SECTION	COUNTY	TOTAL SHEETS	SHEET NO.
0003	18A-2	MCHENRY	825	660
CONTRACT NO. 60F72			ILLINOIS FED. AID PROJECT	