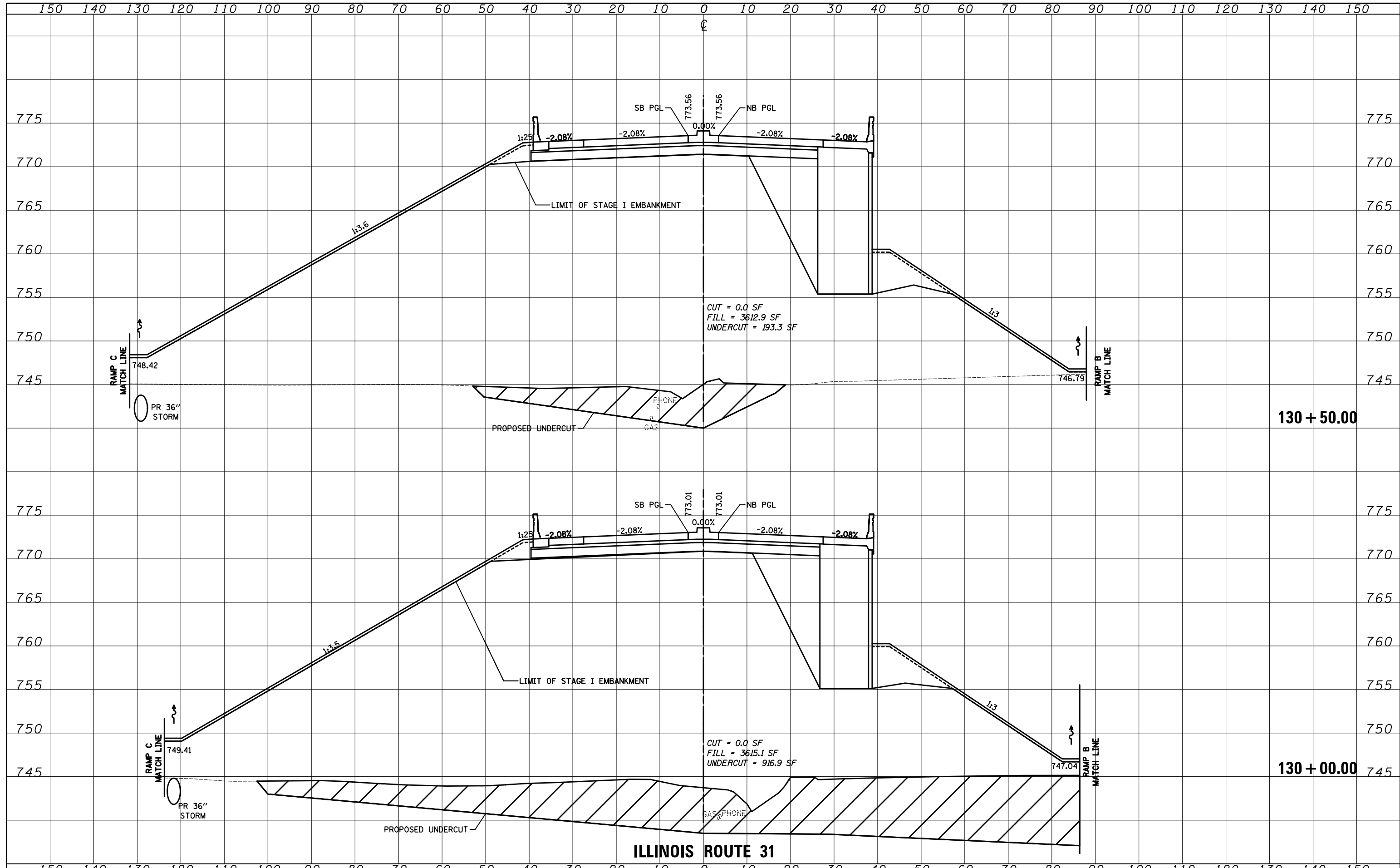


DATE	
BY	
FINISHED	
PLOTTED	
TEMPLATE	
NOTE BOOK	
AREAS CHECKED	
NO.	

DATE	
BY	
ORIGINAL SURVEY	
PLOTTED	
TEMPLATE	
NOTE BOOK	
AREAS CHECKED	
NO.	



FILE NAME = ...YD160F72-sht-xxsh-t-01.Bypass_South.dgn	USER NAME = akw	DESIGNED - PML	REVISÉD -	STATE OF ILLINOIS DEPARTMENT OF TRANSPORTATION	CROSS SECTIONS			O.R. RTE. 0003	SECTION 18A-2	COUNTY MCHENRY	TOTAL SHEETS 825	SHEET NO. 708
PLOT SCALE = 20.0000' / in.	CHECKED - GAB	REVISÉD -	SCALE: 10'H: 5'V					SHEET NO. 29 OF 64 SHEETS	STA. 130+00.00	TO STA. 130+50.00	CONTRACT NO. 60F72	
PLOT DATE = 5/2/2012	DATE - 5/3/2012	REVISÉD -	FED. ROAD DIST. NO. 1 ILLINOIS FED. AID PROJECT									