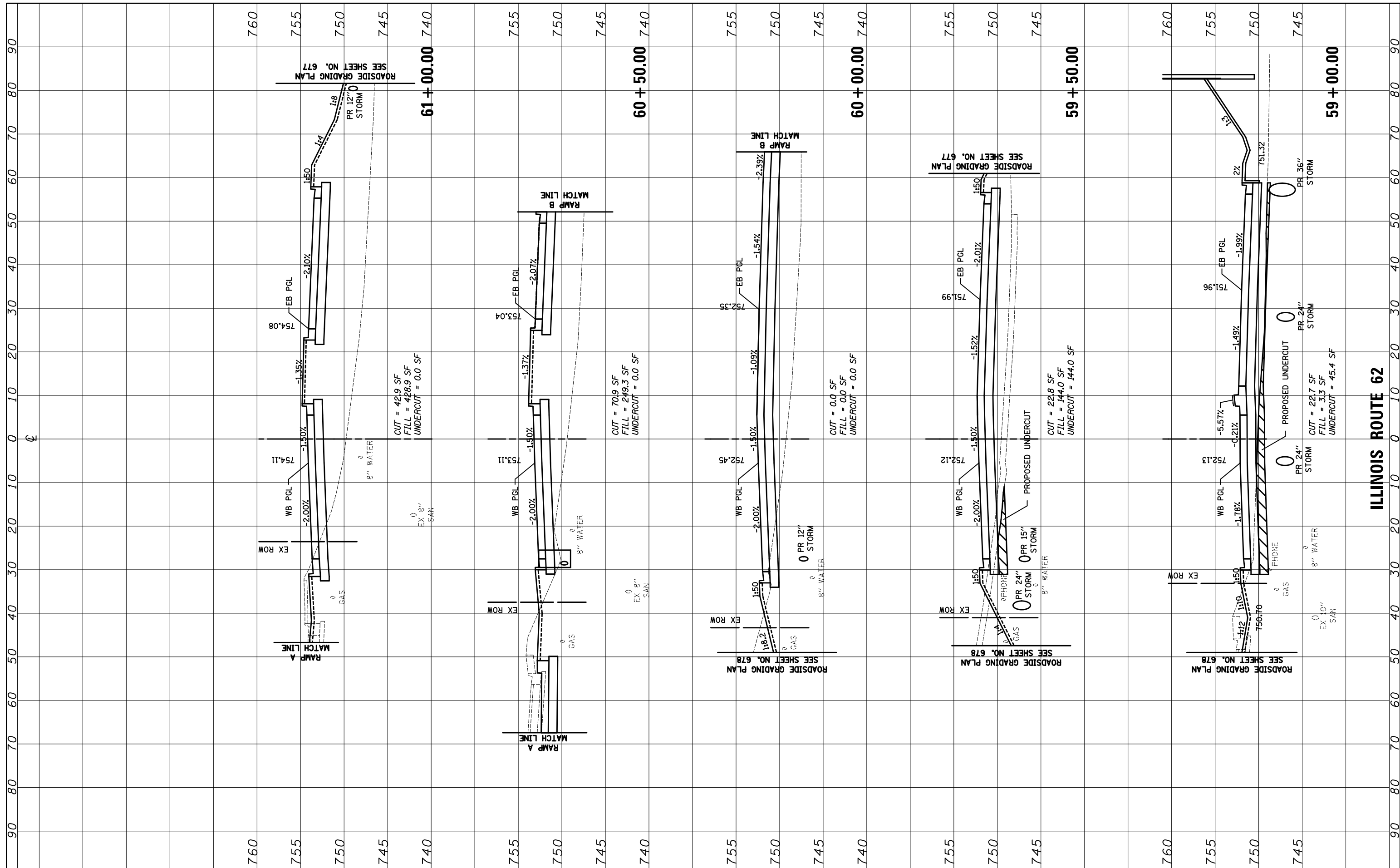


FINAL SURVEY	SURVEYED	BY	DATE
NOTE BOOK	PLOTTED		
NO.	TEMPLATE		
	AREAS CHECKED		

ORIGINAL SURVEY	SURVEYED	BY	DATE
NOTE BOOK	PLOTTED		
NO.	TEMPLATE		
	AREAS CHECKED		



FILE NAME = ...\\D160F72-sht-xxsh-t-09_Algonquin.dgn

USER NAME = akw
 DESIGNED - PML
 DRAWN - PML
 CHECKED - GAB
 DATE - 5/3/2012

REVISED -
 REVISED -
 REVISED -
 REVISED -

**STATE OF ILLINOIS
 DEPARTMENT OF TRANSPORTATION**

CROSS SECTIONS

SCALE: 10'H: 5'V SHEET NO. 5 OF 10 SHEETS STA. 59+00.00 TO STA. 61+00.00

O.R. RTE.	SECTION	COUNTY	TOTAL SHEETS	SHEET NO.
0003	18A-2	MCHENRY	825	761
CONTRACT NO. 60F72				
FED. ROAD DIST. NO. 1 ILLINOIS FED. AID PROJECT				

ILLINOIS ROUTE 62