

**INDEX OF SHEETS**

SHEET NO.	DESCRIPTION
1	COVER SHEET
2	INDEX OF SHEETS & LIST OF STANDARDS
3	AND GENERAL NOTES
4-8	SUMMARY OF QUANTITIES
9-11	TYPICAL SECTIONS
12	SCHEDULE OF QUANTITIES
13-14	ALIGNMENT, TIES AND BENCHMARKS
15-16	ROADWAY PLAN
17-23	SUGGESTED STAGING AND TRAFFIC CONTROL PLANS
24	EROSION AND SEDIMENT CONTROL PLAN
25-25B	SUE INVESTIGATION OF UNDERGROUND UTILITIES PLANS
26-28	EXISTING AND PROPOSED DRAINAGE PLANS
29	PAVEMENT MARKING & LANDSCAPING PLANS
30-45	TRAFFIC SIGNAL PLANS AND DETAILS
46-47	DETAIL OF PERPENDICULAR CURB RAMPS FOR SHARED PATH
48	DETAIL OF STORM SEWER CONNECTION TO EXISTING SEWER (BD-07)
49	DETAILS FOR FRAMES AND LIDS ADJUSTMENT WITH MILLING (BD-08)
50	PAVEMENT PATCHING FOR HMA SURFACED PAVEMENT (BD-22)
51	CURB OR CURB AND GUTTER REMOVAL AND REPLACEMENT (BD-24)
52	BUTT JOINT AND HMA TAPER DETAILS (BD-32)
53	FIRE HYDRANT TO BE MOVED (BD-36)
54	BENCHING DETAIL FOR EMBANKMENT WIDENKNG (BD-51)
55	TRAFFIC CONTROL AND PROTECTION FOR SIDE ROADS, INTERSECTIONS AND DRIVEWAYS (TC-10)
56	TYPICAL APPLICATIONS RAISED REFLECTIVE PAVEMENT MARKERS (SNOW-PLOW RESISTANT) (TC-11)
57	DISTRICT ONE TYPICAL PAVEMENT MARKINGS (TC-13)
58	TRAFFIC CONTROL AND PROTECTION AT TURN BAYS (TO REMAIN OPEN TO TRAFFIC) (TC-14)
59	PAVEMENT MARKING LETTERS AND SYMBOLS FOR TRAFFIC STAGING (TC-16)
60	TEMPORARY INFORMATION SIGNING (TC-22)
61	DRIVEWAY ENTRANCE SIGNING (TC-26)
62	DETECTOR LOOP INSTALLATION DETAILS FOR ROADWAY RESURFACING (TS-07)
63-68	CROSS SECTIONS

**LIST OF STATE STANDARDS**

STANDARD NO.	DESCRIPTION
000001-06	STANDARD SYMBOLS, ABBREVIATIONS AND PATTERNS
280001-06	TEMPORARY EROSION CONTROL SYSTEMS
442201-03	CLASS C AND D PATCHES
482001-02	HMA SHOULDER ADJACENT TO FLEXIBLE PAVEMENT
542301-03	PRECAST REINFORCED CONCRETE FLARED END SECTION
542311-03	GRATING FOR CONCRETE FLARED END SECTION (FOR 24" THRU 54" PIPE)
602001-02	CATCH BASIN TYPE A
602011-02	CATCH BASIN TYPE C
602401-03	MANHOLE TYPE A
602601-02	PRECAST REINFORCED CONCRETE FLAT SLAB TOP
604001-03	FRAME AND LIDS TYPE 1
604036-02	GRATE TYPE 8
604091-02	FRAME AND GRATE TYPE 24
606001-04	CONCRETE CURB TYPE B AND COMBINATION CONCRETE CURB AND GUTTER
606006-02	OUTLETS FOR CONCRETE CURB AND GUTTER TYPE B-6.24
606301-04	PC CONCRETE ISLANDS AND MEDIANS
701006-03	OFF-RD OPERATIONS, 2L, 2W, 15' TO 24" FROM PAVEMENT EDGE
701101-02	OFF-RD OPERATIONS, MULTILANE, 15' TO 24" FROM PAVEMENT EDGE
701106-02	OFF-RD OPERATIONS, MULTILANE, MORE THAN 15' AWAY
701326-04	LANE CLOSURE, 2L, 2W, PAVEMENT WIDENING, FOR SPEEDS ≥ 45 MPH
701501-06	URBAN LANE CLOSURE, 2L, 2W, UNDIVIDED
701601-07	URBAN LANE CLOSURE, MULTILANE, 1W OR 2W WITH NONTRAVERSABLE MEDIAN
701701-08	URBAN LANE CLOSURE, MULTILANE INTERSECTION
701801-05	LANE CLOSURE MULTILANE, 1W OR 2W CROSSWALK OF SIDEWALK CLOSURE
701901-02	TRAFFIC CONTROL DEVICES
720001-01	SIGN PANEL MOUNTING DETAILS
780001-03	TYPICAL PAVEMENT MARKINGS
814001-02	HANDHOLES
814006-02	DOUBLE HANDHOLES
857001-01	STANDARD PHASE DESIGNATION DIAGRAMS AND PHASE SEQUENCES
862001-01	UNINTERRUPTABLE POWER SUPPLY (UPS)
873001-02	TRAFFIC SIGNAL GROUNDING & BONDING
876001-02	PEDESTRIAN PUSH BUTTON POST
877001-05	STEEL MAST ARM ASSEMBLY AND POLE 16' THROUGH 55'
878001-09	CONCRETE FOUNDATION DETAILS
880001-01	SPAN WIRE MOUNTED SIGNALS AND FLASHING BEACON INSTALLATION
880006-01	TRAFFIC SIGNAL MOUNTING DETAILS
886001-01	DETECTOR LOOP INSTALLATIONS

HOT-MIX ASPHALT MIXTURE REQUIREMENTS	
MIXTURE TYPE	AIR VOIDS Ndes
<b>PAVEMENT WIDENING (US 30)</b>	
POLYMERIZED HOT-MIX ASPHALT SURFACE COURSE, MIX "F", N90 (IL-9.5 mm) 2"	4% @ 90 GYR.
HMA BASE COURSE WIDENING, (HMA BINDER IL-19 mm) 8 3/4" (3 LIFTS)	4% @ 90 GYR.
<b>PAVEMENT WIDENING (CENTRAL AVE)</b>	
POLYMERIZED HOT-MIX ASPHALT SURFACE COURSE, MIX "F", N90 (IL-9.5 mm) 2"	4% @ 90 GYR.
HMA BASE COURSE (HMA BINDER IL-19 mm), 6" (2 LIFTS)	4% @ 90 GYR.
<b>PAVEMENT RESURFACING</b>	
POLYMERIZED HOT-MIX ASPHALT SURFACE COURSE, MIX "F", N90 (IL-9.5 mm) 2"	4% @ 90 GYR.
<b>SHOULDER RESURFACING</b>	
HOT-MIX ASPHALT SURFACE COURSE, MIX "D", N70 (IL-9.5 mm) 2"	4% @ 70 GYR.
<b>SHOULDER WIDENING</b>	
HOT-MIX ASPHALT SURFACE COURSE, MIX "D", N70 (IL-9.5 mm) 2"	4% @ 70 GYR.
HOT-MIX ASPHALT SHOULDER, (HMA BINDER IL-19 mm), 6"	4% @ 50 GYR.
<b>BIKE PATH</b>	
HOT-MIX ASPHALT SURFACE COURSE, MIX "D", N50 (IL-9.5 mm) 2"	4% @ 50 GYR.
<b>PATCHING</b>	
CLASS D PATCHES (HMA BINDER IL-19 mm)	4% @ 70 GYR.
HMA REPLACEMENT OVER PATCHES (HMA BINDER IL-19 mm)	4% @ 70 GYR.

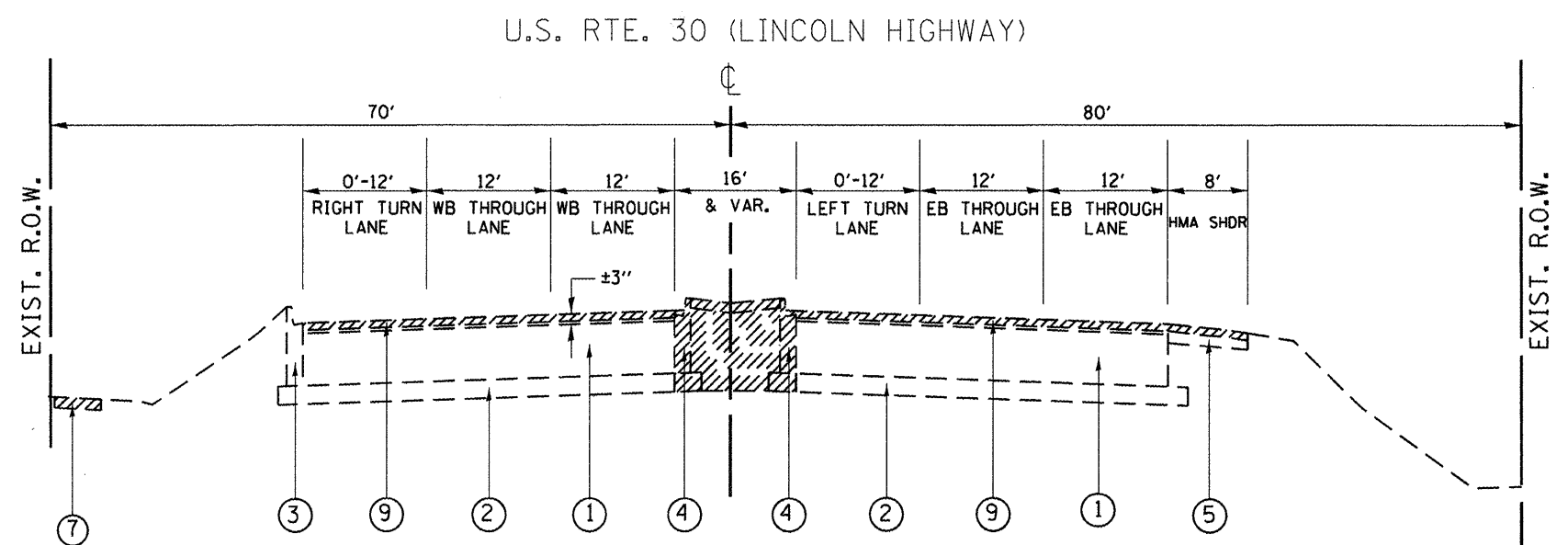
- THE UNIT WEIGHT USED TO CALCULATE ALL HOT-MIX ASPHALT SURFACE MIXTURES IS 112 LBS/SQ.YD./IN
- THE "AC TYPE" FOR POLYMERIZED HMA MIXES SHALL BE "SBS/SBR PG 76-22" AND FOR NON-POLYMERIZED HMA THE "AC TYPE" SHALL BE PG 64-22" UNLESS MODIFIED BY DISTRICT ONE SPECIAL PROVISIONS, FOR "PERCENT OF RAP" SEE SPECIAL PROVISIONS.

*Rev. Sheet 6-1-12*

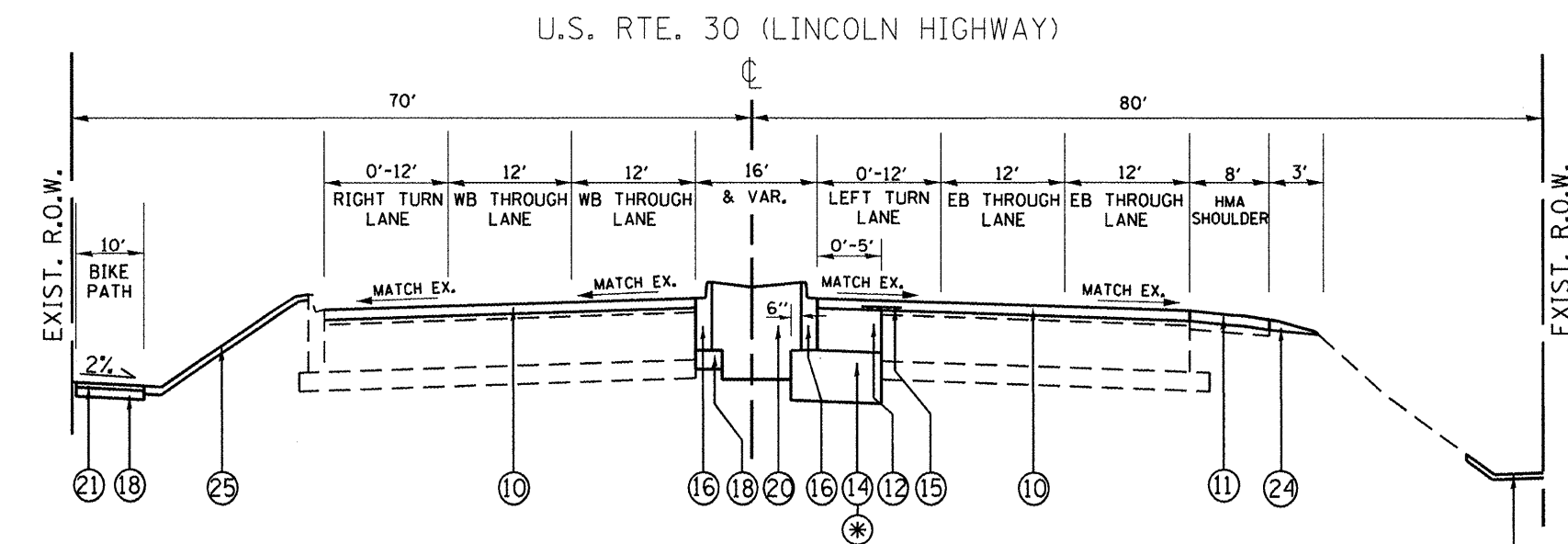
FILE NAME =	USER NAME = midyja	DESIGNED -	REVISED	<b>STATE OF ILLINOIS DEPARTMENT OF TRANSPORTATION</b>	<b>INDEX OF SHEETS &amp; LIST OF STATE STANDARDS</b>	F.A.P. RTE.	SECTION	COUNTY	TOTAL SHEETS	SHEET NO.	
ct:\pw\work\pwidot\midyja\dms\2836\PI5688	B-Design.dgn	DRAWN -	REVISED -			353	23-N-4	COOK	68	2	
	PLOT SCALE = 100.0000' / in.	CHECKED -	REVISED -			<b>CONTRACT NO. 60L21</b>					
	PLOT DATE = 5/2/2012	DATE -	REVISED -			[ILLINOIS] FED. AID PROJECT					
					SCALE:	SHEET NO. OF SHEETS		STA. TO STA.			

SUMMARY OF QUANTITIES				CONSTRUCTION TYPE CODE						SUMMARY OF QUANTITIES				CONSTRUCTION TYPE CODE					
CODE NO	ITEM	UNIT	TOTAL QUANTITIES	STATE URBAN 90% FEDERAL 10% STATE 0004	TRAFFIC 90% FEDERAL 7.5% STATE 2.5% VILLAGE 0021	TRAFFIC EVP 100% VILLAGE 0021	BIKE PATH 90% FEDERAL 10% VILLAGE 0028	FIRE HYDRANT 100% VILLAGE 0043	CODE NO	ITEM	UNIT	TOTAL QUANTITIES	STATE URBAN 90% FEDERAL 10% STATE 0004	TRAFFIC 90% FEDERAL 7.5% STATE 2.5% VILLAGE 0021	TRAFFIC EVP 100% VILLAGE 0021	BIKE PATH 90% FEDERAL 10% VILLAGE 0028	FIRE HYDRANT 100% VILLAGE 0043		
40600300	AGGREGATE (PRIME COAT)	TON	25	25					44201765	CLASS D PATCHES, TYPE II, 10 INCH	SO YD	140	140						
40600400	MIXTURE FOR CRACKS, JOINTS, AND FLANGEWAYS	TON	19	19					44201769	CLASS D PATCHES, TYPE III, 10 INCH	SO YD	80	80						
40600895	CONSTRUCTING TEST STRIP	EACH	1	1					44201771	CLASS D PATCHES, TYPE IV, 10 INCH	SO YD	58	58						
40600982	HOT-MIX ASPHALT SURFACE REMOVAL - BUTT JOINT	SO YD	88	88					<b>44300200</b>	<b>STRIP REFLECTIVE CRACK CONTROL TREATMENT</b>	<b>FOOT</b>	<b>725</b>	<b>725</b>						
40601005	HOT-MIX ASPHALT REPLACEMENT OVER PATCHES	TON	53	53					48101500	AGGREGATE SHOULDERS, TYPE B 6"	SO YD	165	165						
40603335	HOT-MIX ASPHALT SURFACE COURSE, MIX "D", N50	TON	126				126		48102100	AGGREGATE WEDGE SHOULDER, TYPE B	TON	62	62						
40603340	HOT-MIX ASPHALT SURFACE COURSE, MIX "D", N70	TON	148	148					48203029	HOT-MIX ASPHALT SHOULDERS, 8"	SO YD	420	420						
40603595	POLYMERIZED HOT-MIX ASPHALT SURFACE COURSE, MIX "F", N90	TON	1410	1410					54213657	PRECAST REINFORCED CONCRETE FLARED END SECTIONS 12"	EACH	2	2						
42001300	PROTECTIVE COAT	SO YD	736	736					54213660	PRECAST REINFORCED CONCRETE FLARED END SECTIONS 15"	EACH	1	1						
42400200	PORTLAND CEMENT CONCRETE SIDEWALK 5 INCH	SO FT	200	200					54213669	PRECAST REINFORCED CONCRETE FLARED END SECTIONS 24"	EACH	1	1						
42400800	DETECTABLE WARNINGS	SO FT	120	120					54247130	GRATING FOR CONCRETE FLARED END SECTION 24"	EACH	1	1						
44000157	HOT-MIX ASPHALT SURFACE REMOVAL, 2"	SO YD	13060	13060					550A0340	STORM SEWERS, CLASS A, TYPE 2 12"	FOOT	121	121						
44000500	COMBINATION CURB AND GUTTER REMOVAL	FOOT	2920	2920					550A0360	STORM SEWERS, CLASS A, TYPE 2 15"	FOOT	95	95						
44000600	SIDEWALK REMOVAL	SO FT	3020				3020		550A0410	STORM SEWERS, CLASS A, TYPE 2 24"	FOOT	430	430						
44002212	HOT-MIX ASPHALT REMOVAL OVER PATCHES, 3"	SO YD	316	316					55100500	STORM SEWER REMOVAL 12"	FOOT	20	20						
44003100	MEDIAN REMOVAL	SO FT	10655	10655					56400100	FIRE HYDRANTS TO BE MOVED	EACH	2					2		
									60200205	CATCH BASINS, TYPE A, 4' -DIAMETER, TYPE 1 FRAME, CLOSED LID	EACH	1	1						

Rev. 6-1-12



**EXISTING TYPICAL SECTION**  
**U.S. ROUTE 30 (LINCOLN HIGHWAY)**  
 STA 493+00 TO STA 500+00



**PROPOSED TYPICAL SECTION**  
**U.S. ROUTE 30 (LINCOLN HIGHWAY)**  
 STA 493+00 TO STA 500+00

**PROPOSED MEDIAN**  
 STA 496+28 TO STA 499+35

- LEGEND**
- ① EXISTING P.C.C. PAVEMENT, ± 10"
  - ② EXISTING STABILIZED AGGREGATE SUBBASE, 4"
  - ③ EXISTING COMBINATION CONCRETE C&G TYPE B-6.24
  - ④ EXISTING COMBINATION CONCRETE C&G TYPE SB-9.06
  - ⑤ EXISTING HMA SHOULDER
  - ⑥ EXISTING AGGREGATE SHOULDER
  - ⑦ EXISTING P.C.C. SIDEWALK, 5"
  - ⑧ EXISTING HMA BASE COURSE, ±10"
  - ⑨ PROPOSED HOT-MIX ASPHALT SURFACE REMOVAL 2"
  - ⑩ PROPOSED POLYMERIZED HOT-MIX ASPHALT SURFACE COURSE, MIX "F", N90, 2"
  - ⑪ PROPOSED HOT-MIX ASPHALT SURFACE COURSE, MIX "D", N70, 2"
  - ⑫ PROPOSED HOT-MIX ASPHALT BASE COURSE WIDENING, 8¾"
  - ⑬ PROPOSED HOT-MIX ASPHALT BASE COURSE, 6"
  - ⑭ PROPOSED AGGREGATE SUBGRADE IMPROVEMENT, 12"
  - ⑮ PROPOSED STRIP REFLECTIVE CRACK CONTROL TREATMENT
  - ⑯ PROPOSED COMBINATION CONCRETE C&G, TYPE B-6.12
  - ⑰ PROPOSED COMBINATION CONCRETE C&G, TYPE B-6.24
  - ⑱ PROPOSED SUB-BASE GRANULAR MATERIAL, TYPE B, 4"
  - ⑲ PROPOSED COMBINATION CONCRETE C&G, TYPE SB-6.12 (MONOLITHICALLY Poured)
  - ⑳ PROPOSED TOPSOIL, 24"
  - ㉑ PROPOSED HOT-MIX ASPHALT SURFACE COURSE, MIX "D", N50, 2"
  - ㉒ PROPOSED HOT-MIX ASPHALT SHOULDER, 8"
  - ㉓ PROPOSED AGGREGATE SHOULDER, TYPE B, 6"
  - ㉔ PROPOSED AGGREGATE WEDGE SHOULDER, TYPE B
  - ㉕ PROPOSED TOPSOIL, 4"
  - ㉖ GRADING AND SHAPING DITCHES
  - \* GEOTECHNICAL FABRIC FOR GROUND STABILIZATION

REMOVAL ITEMS

**CONTRACTOR SHALL PATCH FIRST BEFORE MILLING**

FILE NAME =	USER NAME = hamdanah	DESIGNED -	REVISED -
es:\pwork\pwork\hamdanah\dms92836\PI5888-Design.dgn		DRAWN -	REVISED -
PLOT SCALE = 100.0000' / 1"		CHECKED -	REVISED -
PLOT DATE = 5/23/2012		DATE -	REVISED -

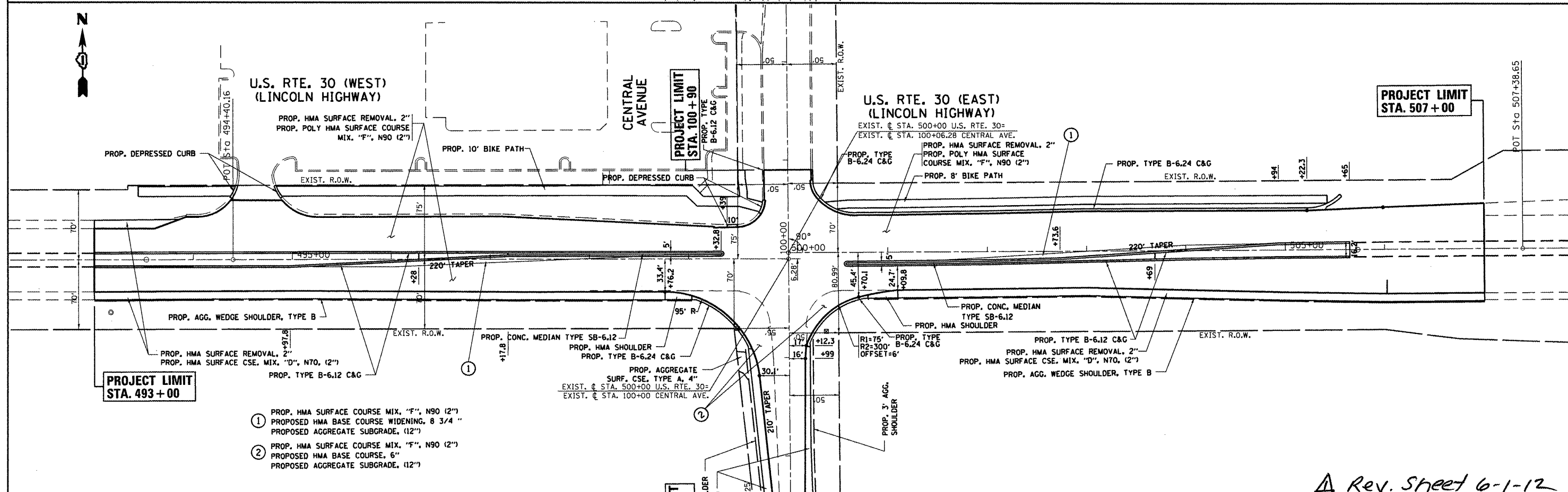
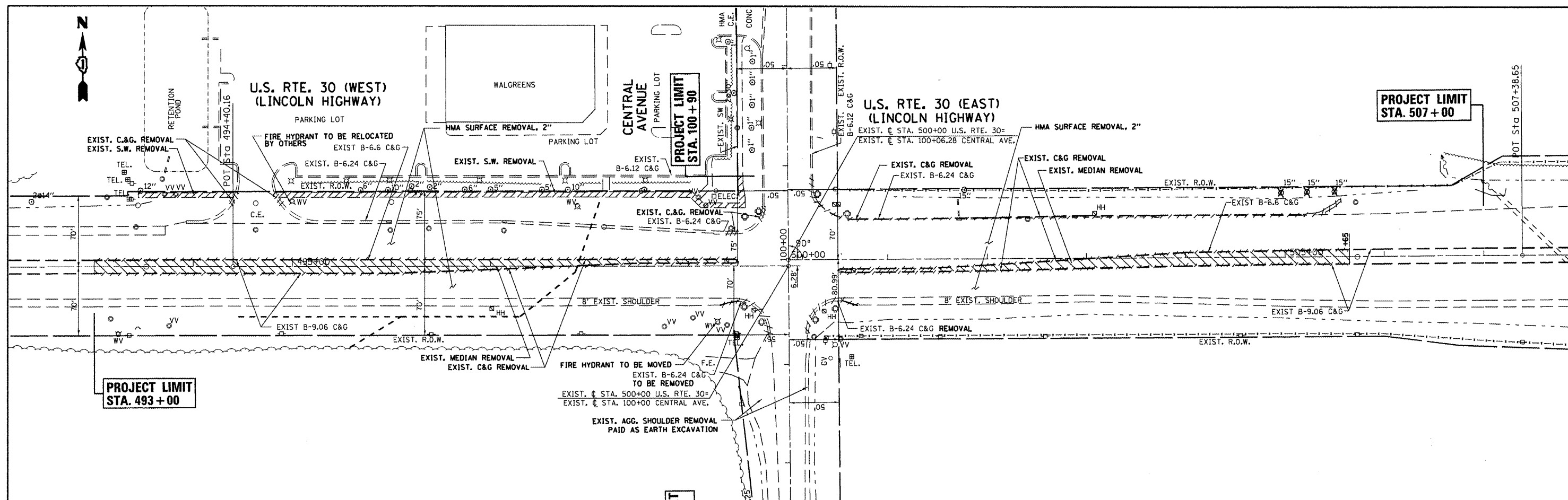
**STATE OF ILLINOIS**  
**DEPARTMENT OF TRANSPORTATION**

**EXISTING AND PROPOSED TYPICAL SECTION**  
**US 30 AT CENTRAL AVE.**

SCALE: SHEET NO. OF SHEETS STA. TO STA.

*A Rev. Sheet 6-1-12*

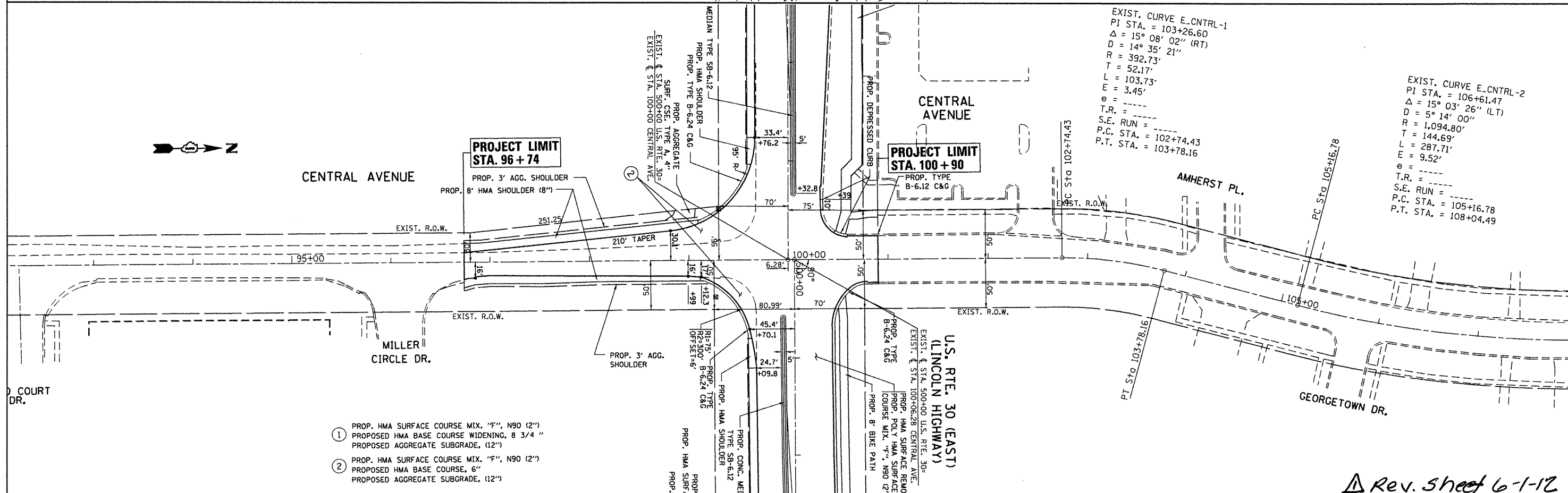
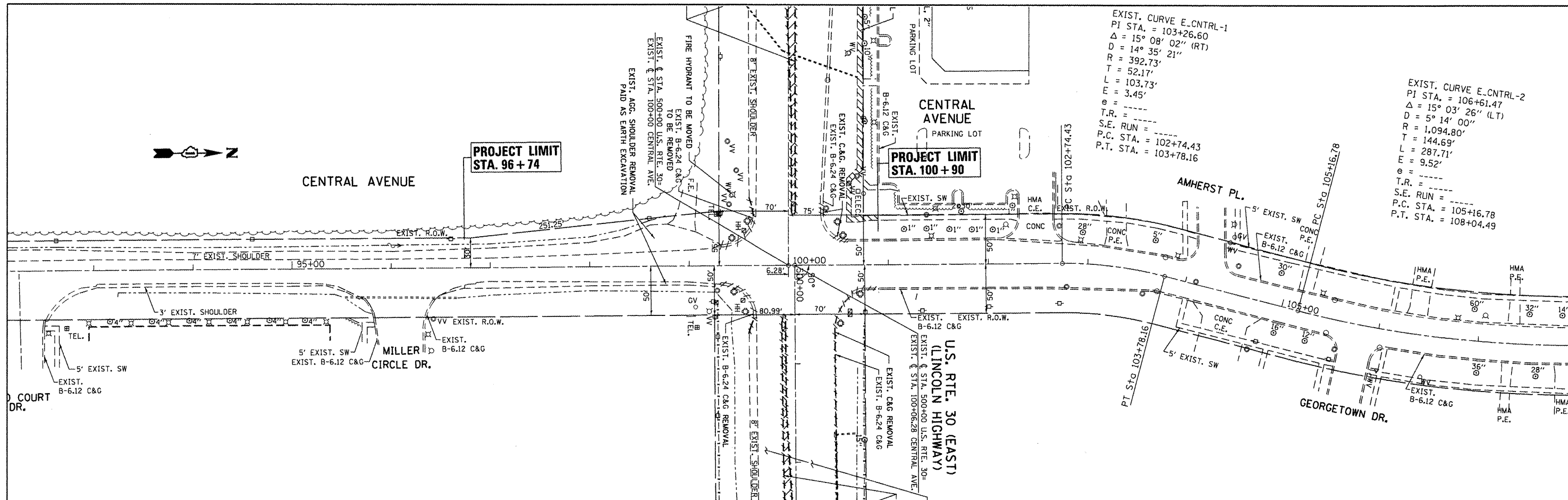
F.A.P. RTE.	SECTION	COUNTY	TOTAL SHEETS	SHEET NO.
353	23-N-4	COOK	68	9
<b>CONTRACT NO. 60L21</b>				
<small>ILLINOIS FED. AID PROJECT</small>				



- ① PROP. HMA SURFACE COURSE MIX. "F", N90 (2")  
PROPOSED HMA BASE COURSE WIDENING, 8 3/4"  
PROPOSED AGGREGATE SUBGRADE, (12")
- ② PROP. HMA SURFACE COURSE MIX. "F", N90 (2")  
PROPOSED HMA BASE COURSE, 6"  
PROPOSED AGGREGATE SUBGRADE, (12")

*Rev. Sheet 6-1-12*

FILE NAME =	USER NAME = hamdanah	DESIGNED -	REVISED -	<b>STATE OF ILLINOIS</b>	<b>EXISTING AND PROPOSED ROADWAY</b> <b>U.S. RTE. 30 (LINCOLN HIGHWAY) AT CENTRAL AVENUE</b>	F.A.P. RTE.	SECTION	COUNTY	TOTAL SHEETS	SHEET NO.	
c:\pwwork\pwwork\hamdanah\dms92832\P158888-shr-plen.dgn	PLOT SCALE = 1/8"=1'-0"	DRAWN -	REVISED -			353	23-N-4	COOK	68	15	
	PLOT DATE = 5/23/2012	CHECKED -	REVISED -			<b>CONTRACT NO. 60L21</b>					
		DATE -	REVISED -			ILLINOIS FED. AID PROJECT					
						SHEET OF SHEETS STA. TO STA.					



- ① PROP. HMA SURFACE COURSE MIX. "F", N90 (2")  
 PROPOSED HMA BASE COURSE WIDENING, 8 3/4"  
 PROPOSED AGGREGATE SUBGRADE, (12")
- ② PROP. HMA SURFACE COURSE MIX. "F", N90 (2")  
 PROPOSED HMA BASE COURSE, 6"  
 PROPOSED AGGREGATE SUBGRADE, (12")

Rev. sheet 6-1-12

FILE NAME =	USER NAME = mdyj	DESIGNED -	REVISED -	STATE OF ILLINOIS	EXISTING AND PROPOSED ROADWAY CENTRAL AVENUE AT U.S. RTE. 30 (LINCOLN HIGHWAY)	F.A.P. RTE.	SECTION	COUNTY	TOTAL SHEETS	SHEET NO.	
ct:\pw\work\p\dot\m\dyj\dms92832\PI15688-8-sh-t-plan.dgn		DRAWN -	REVISED -			353	23-N-4	COOK	68	16	
PLT SCALE = 100.0000' / 1"		CHECKED -	REVISED -			CONTRACT NO. 60L21					
PLT DATE = 4/26/2012		DATE -	REVISED -			ILLINOIS FED. AID PROJECT					
						SHEET OF SHEETS STA. TO STA.					

**STAGE 1**

TRAFFIC MAINTAINED ON EXISTING PAVEMENT DURING STAGE 1 CONSTRUCTION

**MAINTENANCE OF TRAFFIC**

INSTALL ADVANCE TEMPORARY TRAFFIC CONTROL DEVICES AND SIGNS IN ACCORDANCE WITH IDOT STANDARD 701701 AND 701326.  
MAINTAIN TRAFFIC AT INTERSECTION AS SHOWN ON THE SUGGESTED STAGING & TRAFFIC CONTROL STAGE I.

**CONSTRUCTION**

CONSTRUCTION TO BE PERFORMED ON SOUTHWEST, NORTHEAST SIDE OF US 30 AND WEST SIDE OF CENTRAL AVENUE.

- 1) CONSTRUCT PROPOSED COMBINATION CONCRETE CURB AND GUTTER, SHARE PATH AND INSTALL PROPOSED DRAINAGE STRUCTURES ALONG NORTH SIDE OF US 30 EAST LEG.
- 2) GRADING AND SHAPING DITCHES ALONG SOUTH SIDE OF US 30 WEST LEG.
- 3) CONSTRUCT PROPOSED WIDENING AND SHOULDER WEST SIDE OF CENTRAL AVENUE.

**STAGE II**

TRAFFIC MAINTAINED ON EXISTING PAVEMENT DURING STAGE 2 CONSTRUCTION.

**MAINTENANCE OF TRAFFIC**

INSTALL TEMPORARY TRAFFIC CONTROL DEVICES AND SIGNS IN ACCORDANCE WITH IDOT STANDARDS 701006, 701106, 701701 AND 701326.  
MAINTAIN TRAFFIC AT INTERSECTION AS SHOWN ON THE SUGGESTED STAGING & TRAFFIC CONTROL STAGE II.

**CONSTRUCTION**

CONSTRUCTION TO BE PERFORMED ON NORTHWEST, SOUTHEAST SIDE OF US 30 AND EAST SIDE OF CENTRAL AVENUE.

- 1) CONSTRUCT PROPOSED SHARED PATH ON NORTHWEST SIDE OF US 30.
- 2) GRADING AND SHAPING DITCHES ALONG SOUTH SIDE OF EAST LEG OF US 30.
- 3) CONSTRUCT PROPOSED HMA SHOULDER AND WIDENING AT SOUTHEAST CORNER OF CENTRAL AVENUE.

**STAGE III**

TRAFFIC MAINTAINED ON EXISTING PAVEMENT DURING STAGE 3 CONSTRUCTION

**MAINTENANCE OF TRAFFIC**

INSTALL ADVANCE TEMPORARY TRAFFIC CONTROL DEVICES AND SIGNS IN ACCORDANCE WITH IDOT STANDARD 701701.  
MAINTAIN TRAFFIC AS SHOWN ON THE SUGGESTED STAGING & TRAFFIC CONTROL STAGE III.

**CONSTRUCTION**

CONSTRUCTION TO BE PERFORMED ALONG US 30 EAST AND WEST LEGS.

- 1) RECONSTRUCT MEDIAN ALONG US 30.

**STAGE 4**

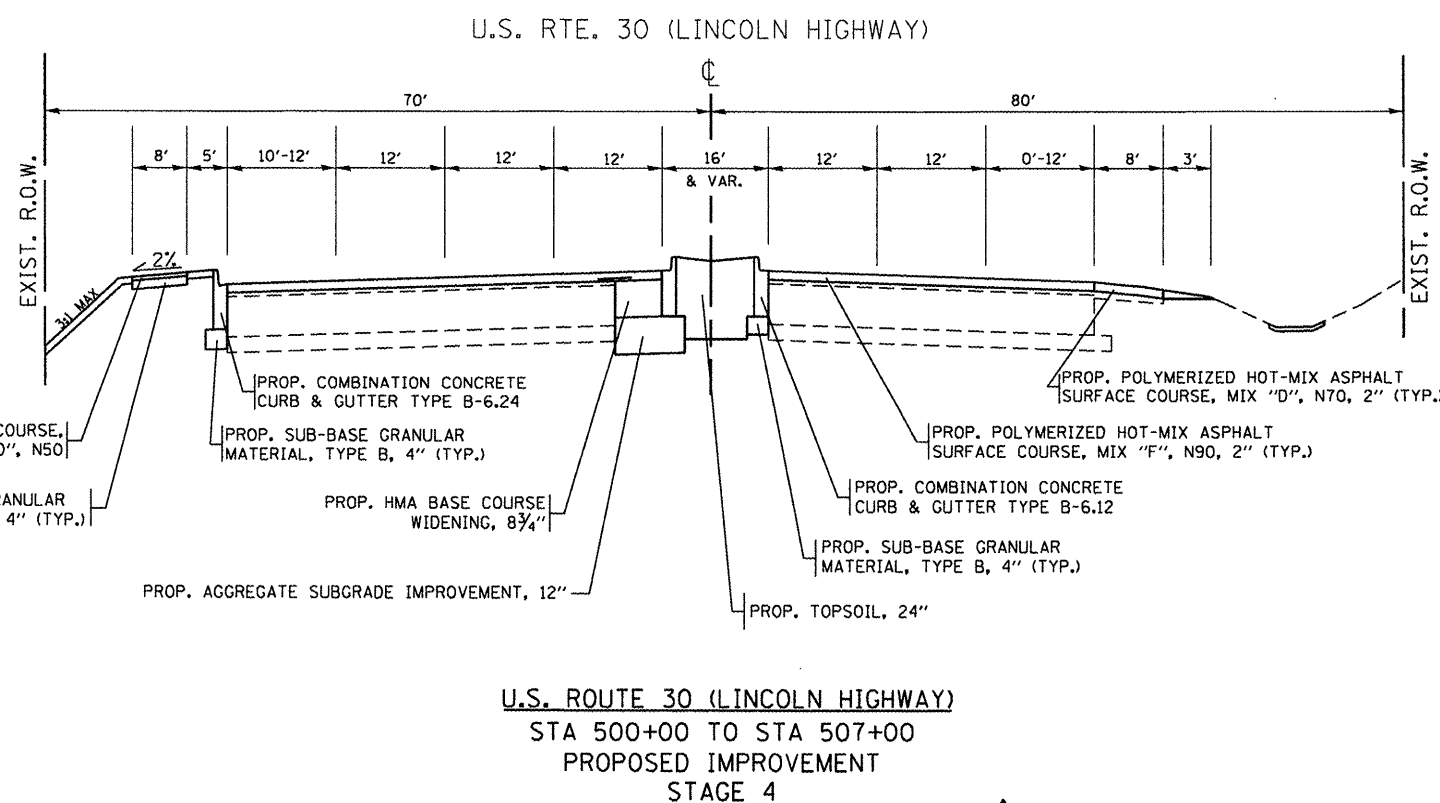
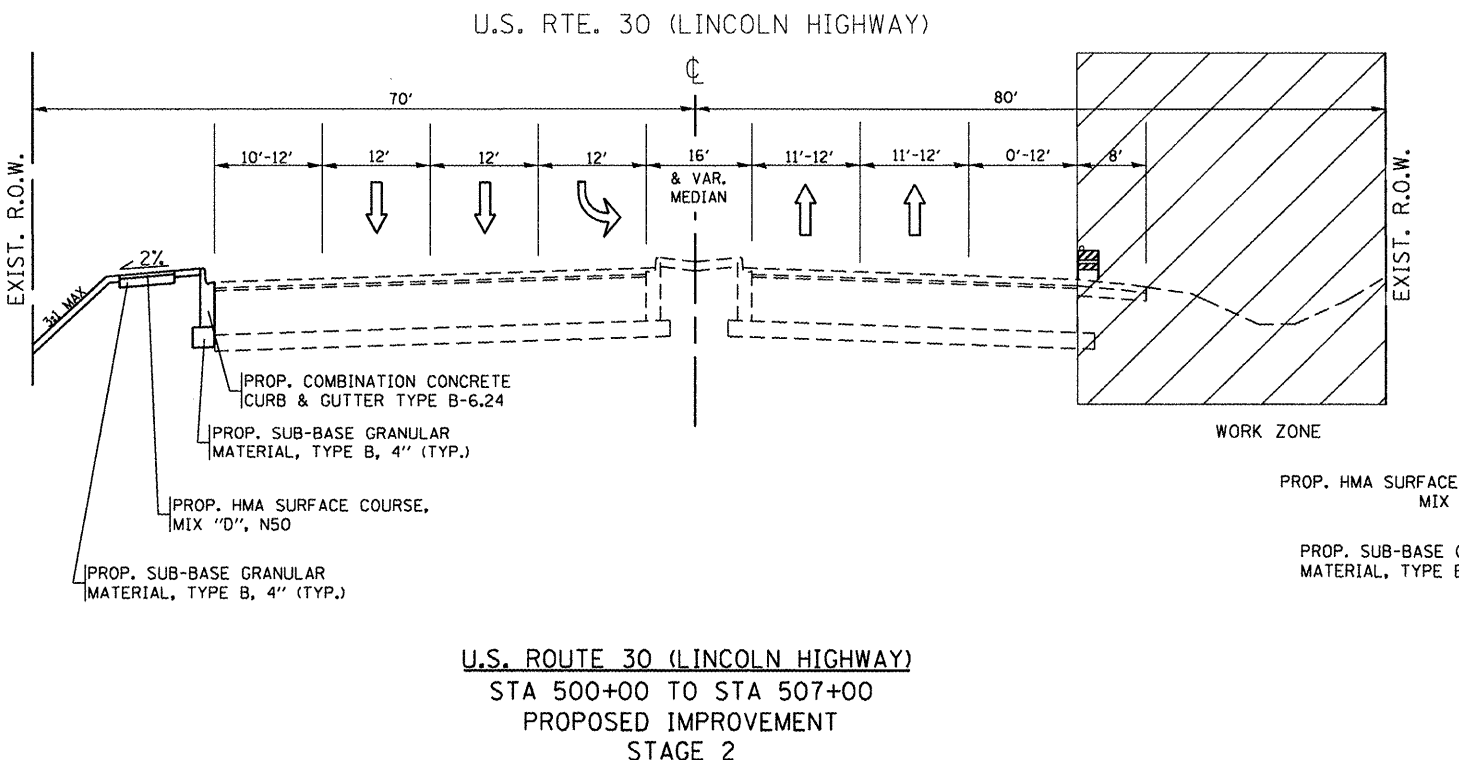
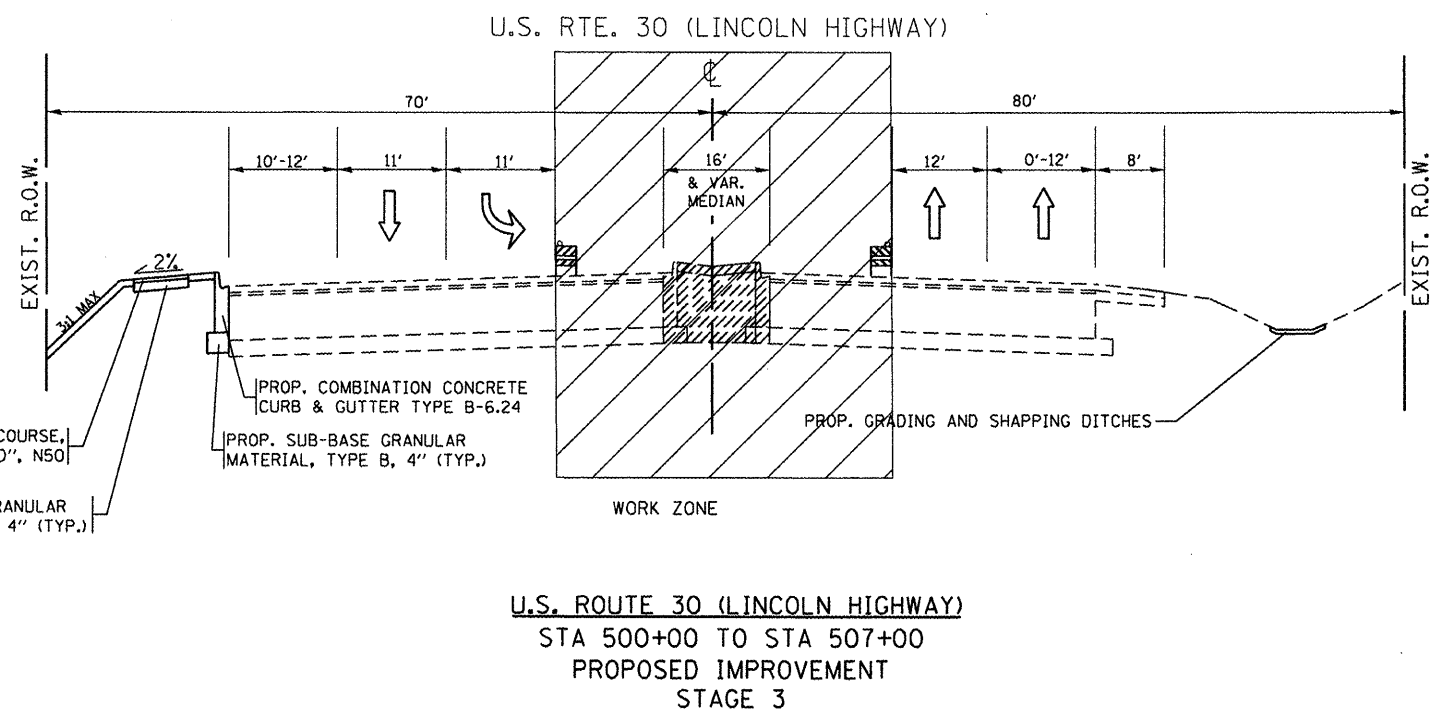
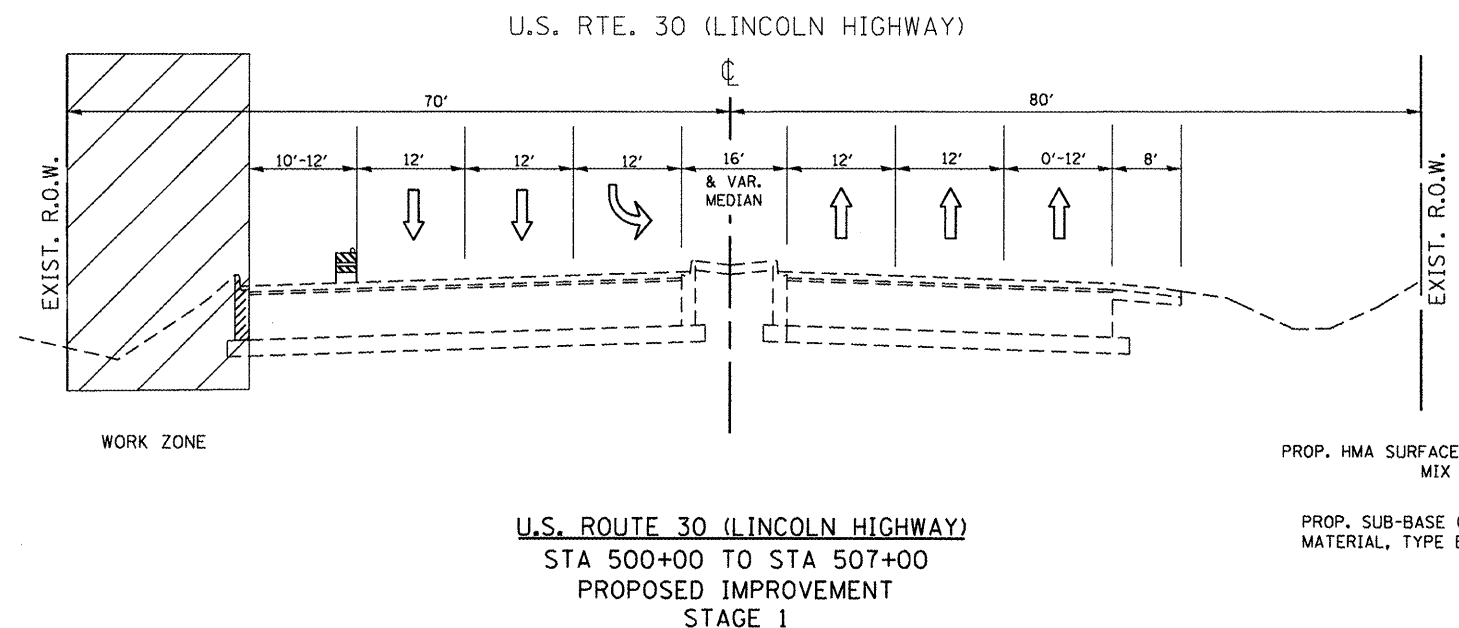
TRAFFIC MAINTAINED ON EXISTING AND PROPOSED PAVEMENT DURING STAGE 4 CONSTRUCTION

**MAINTENANCE OF TRAFFIC/CONSTRUCTION**

- 1) RESURFACE EXISTING PAVEMENT AND INSTALL SURFACE COURSES AT WIDEN PAVEMENT PER IDOT STANDARD 701501, 701601 AND 701701.

*Rev. Sheet 6-1-12*

FILE NAME =	USER NAME = midyja	DESIGNED -	REVISED -	<b>STATE OF ILLINOIS DEPARTMENT OF TRANSPORTATION</b>	<b>STAGGING AND TRAFFIC CONTROL PLAN</b>			F.A.P. RTE.	SECTION	COUNTY	TOTAL SHEETS	SHEET NO.
ct:\pw_work\pvidot\midyja\dms92836\PI5689	0-staging-Design.dgn	DRAWN -	REVISED -					353	23-N-4	COOK	68	17
PLOT SCALE = 100.0000' / 1"	CHECKED -	REVISED -	REVISED -		SCALE: SHEET NO. OF SHEETS STA. TO STA.			CONTRACT NO. 60L21				
PLOT DATE = 4/26/2012	DATE -	REVISED -	REVISED -					ILLINOIS FED. AID PROJECT				



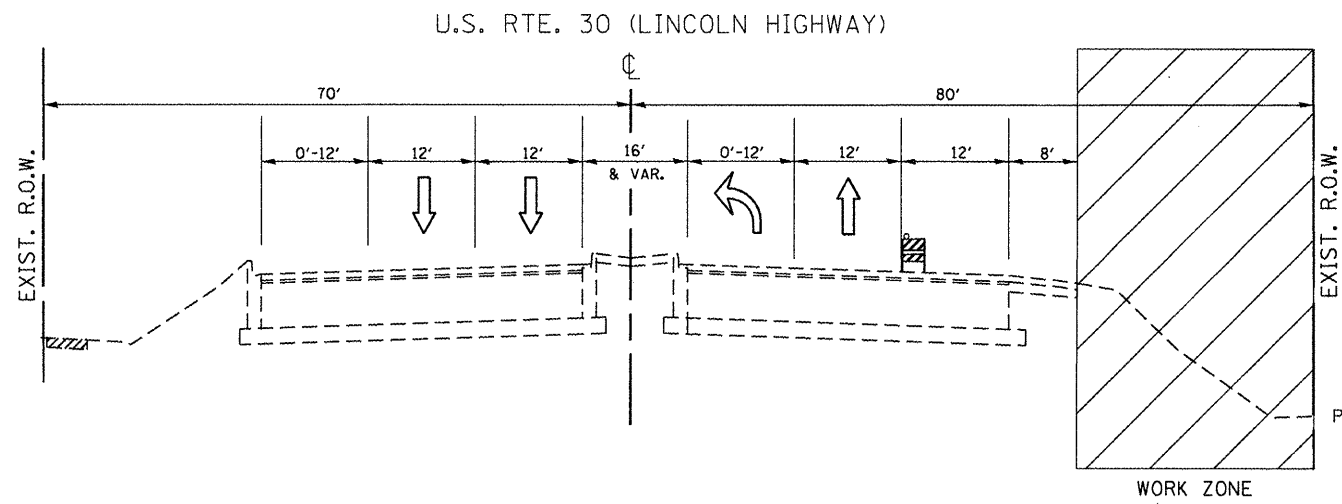
Rev. Sheet 6-1-12

FILE NAME =	USER NAME = mdyj	DESIGNED -	REVISED -
c:\pw\work\p1dot\m1dyj\dm92836\F15689	B-staging-Design.dgn	DRAWN -	REVISED -
		CHECKED -	REVISED -
		DATE -	REVISED -

**STATE OF ILLINOIS  
DEPARTMENT OF TRANSPORTATION**

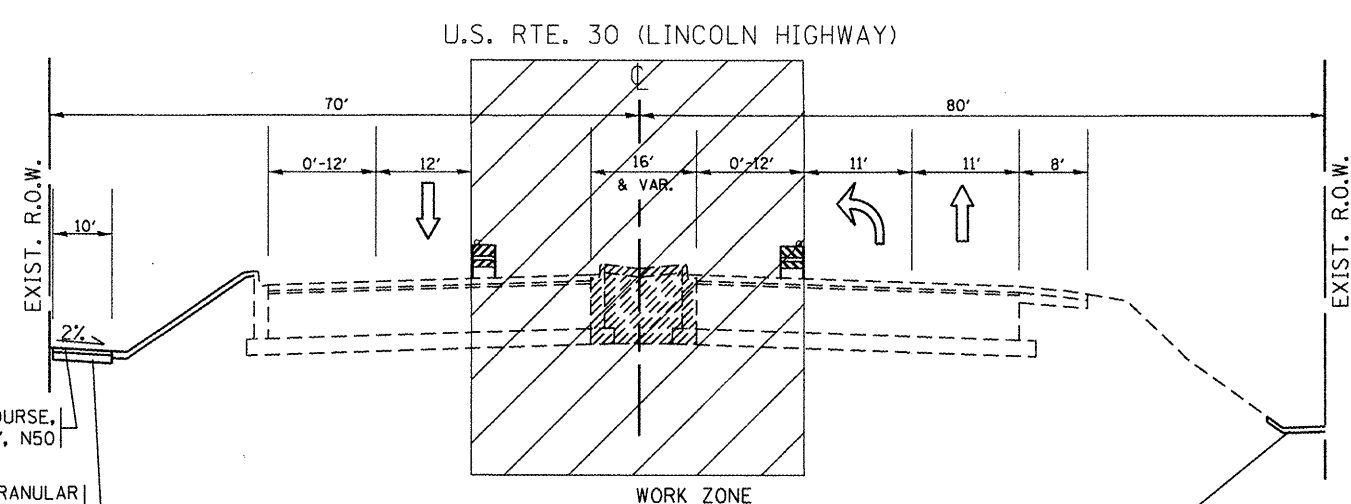
SUGGESTED STAGING AND TRAFFIC CONTROL TYPICAL SECTION US 30 AT CENTRAL AVE.			
SCALE:	SHEET NO.	OF SHEETS	STA. TO STA.

F.A.P. RTE.	SECTION	COUNTY	TOTAL SHEETS	SHEET NO.
353	23-N-4	COOK	68	18
CONTRACT NO. 60L21				ILLINOIS FED. AID PROJECT



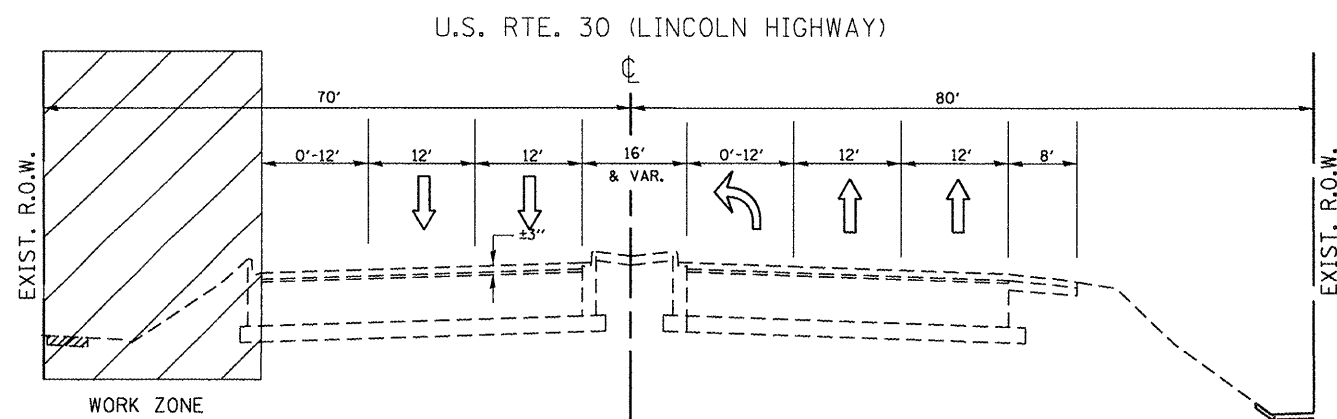
**U.S. ROUTE 30 (LINCOLN HIGHWAY)**  
 STA 493+00 TO STA 500+00  
 PROPOSED IMPROVEMENT  
 STAGE 1

PROP. HMA SURFACE COURSE,  
 MIX "D", N50  
 PROP. SUB-BASE GRANULAR  
 MATERIAL, TYPE B, 4" (TYP.)



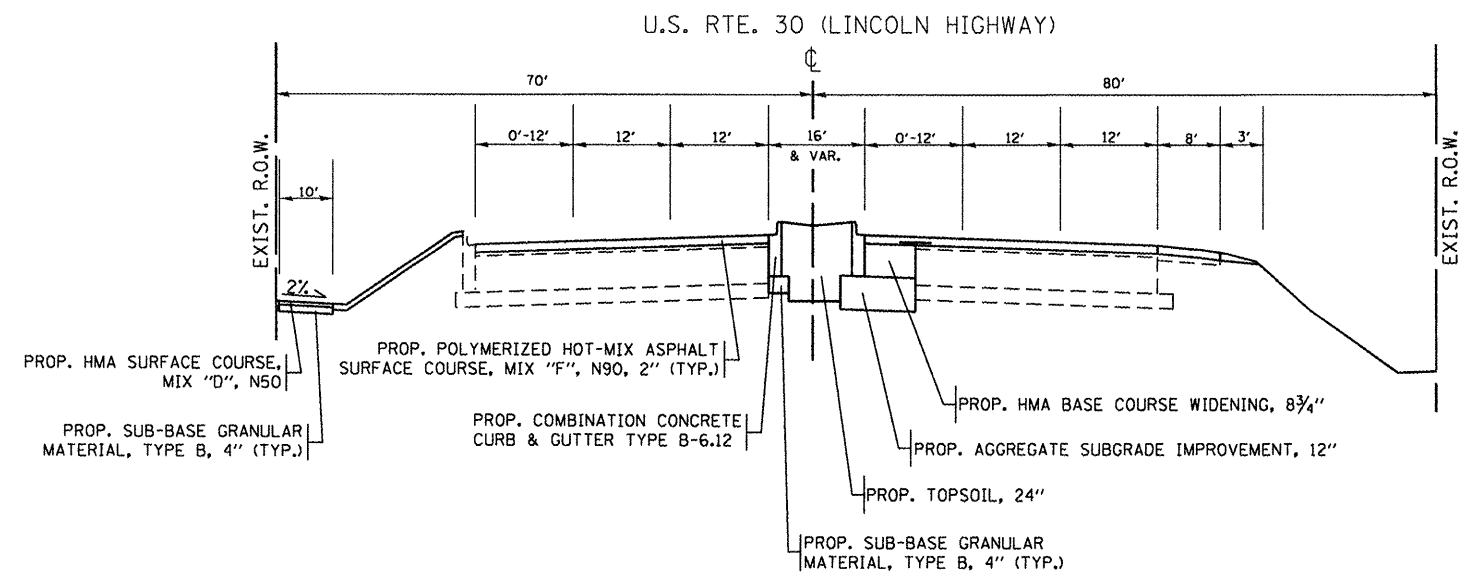
**U.S. ROUTE 30 (LINCOLN HIGHWAY)**  
 STA 493+00 TO STA 500+00  
 PROPOSED IMPROVEMENT  
 STAGE 3

PROP. GRADING AND SHAPPING DITCHES



**U.S. ROUTE 30 (LINCOLN HIGHWAY)**  
 STA 493+00 TO STA 500+00  
 PROPOSED IMPROVEMENT  
 STAGE 2

PROP. GRADING AND SHAPPING DITCHES



**U.S. ROUTE 30 (LINCOLN HIGHWAY)**  
 STA 493+00 TO STA 500+00  
 PROPOSED IMPROVEMENT  
 STAGE 4

PROP. HMA SURFACE COURSE, MIX "D", N50  
 PROP. SUB-BASE GRANULAR MATERIAL, TYPE B, 4" (TYP.)  
 PROP. POLYMERIZED HOT-MIX ASPHALT SURFACE COURSE, MIX "F", N90, 2" (TYP.)  
 PROP. COMBINATION CONCRETE CURB & GUTTER TYPE B-6.12  
 PROP. HMA BASE COURSE WIDENING, 8 3/4"  
 PROP. AGGREGATE SUBGRADE IMPROVEMENT, 12"  
 PROP. TOPSOIL, 24"  
 PROP. SUB-BASE GRANULAR MATERIAL, TYPE B, 4" (TYP.)

*Rev. Sheet 6-1-12*

FILE NAME =	USER NAME = mdyjg	DESIGNED -	REVISED -
cr\pwork\pwork\mdyjg\dms92836\p15688	8-staging-Design.dgn	DRAWN -	REVISED -
PLDT SCALE = 100.0000' / 1"		CHECKED -	REVISED -
PLDT DATE = 4/26/2012		DATE -	REVISED -

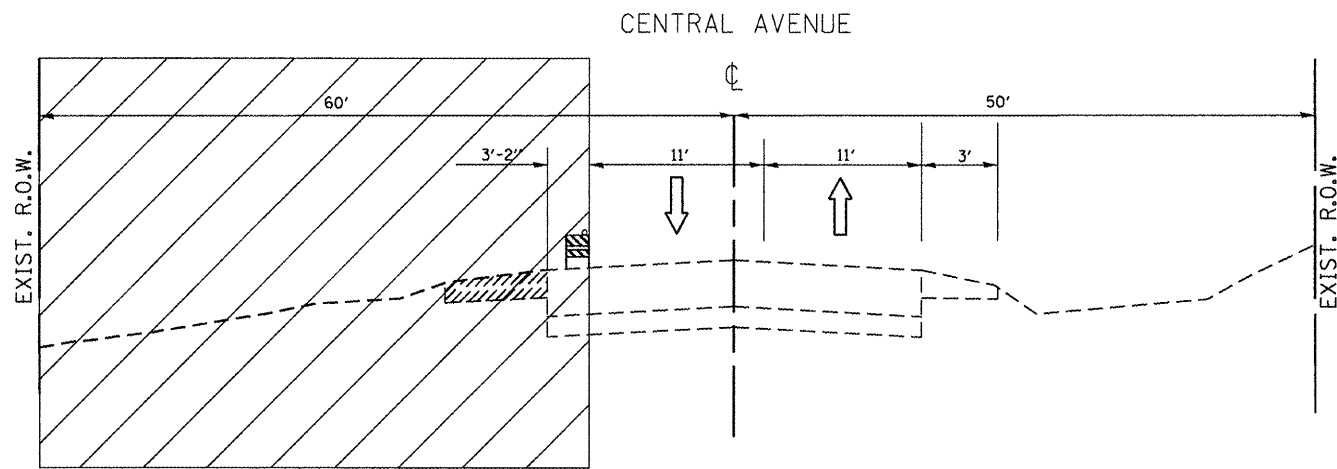
**STATE OF ILLINOIS  
 DEPARTMENT OF TRANSPORTATION**

**SUGGESTED STAGING AND TRAFFIC CONTROL  
 TYPICAL SECTION  
 US 30 AT CENTRAL AVE.**

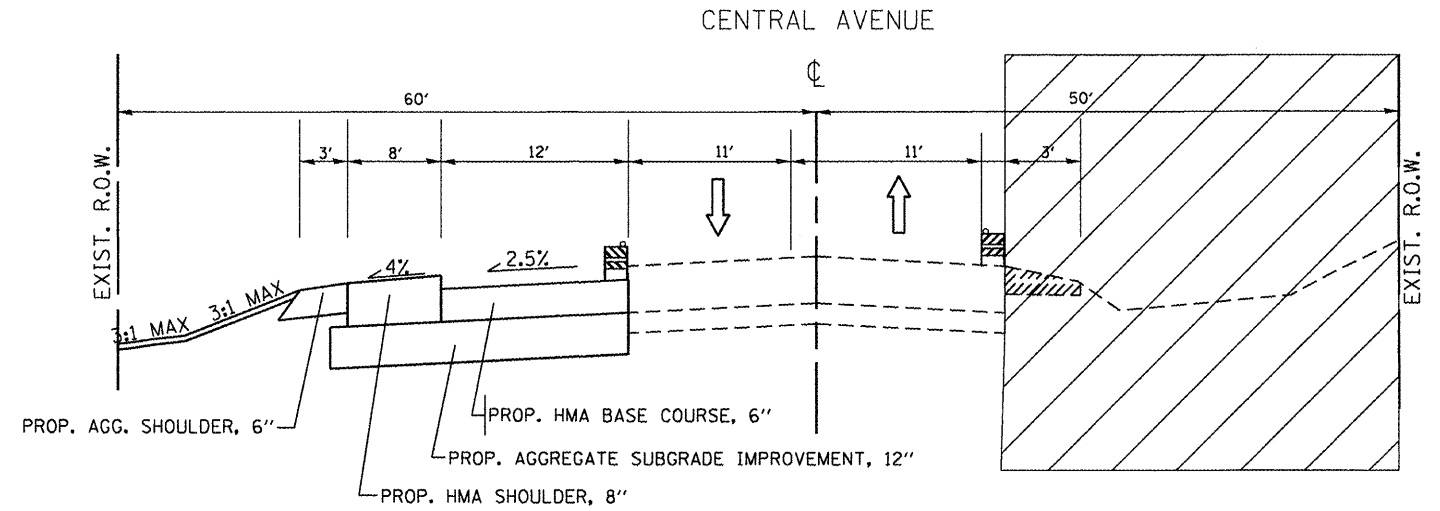
F.A.P. RTE.	SECTION	COUNTY	TOTAL SHEETS	SHEET NO.
353	23-N-4	COOK	68	19
ILLINOIS FED. AID PROJECT			CONTRACT NO. 60L21	

SCALE: SHEET NO. OF SHEETS STA. TO STA.

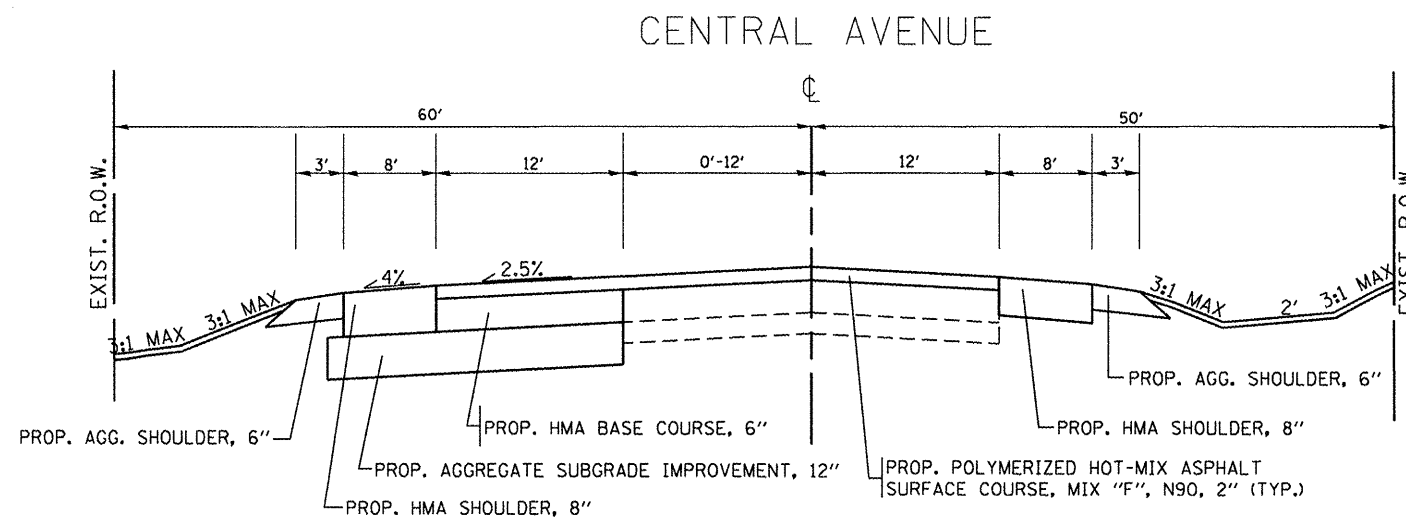




CENTRAL AVE.  
STA 96+74 TO STA 100+90  
PROPOSED IMPROVEMENT  
STAGE 1



CENTRAL AVE.  
STA 96+74 TO STA 100+90  
PROPOSED IMPROVEMENT  
STAGE 2

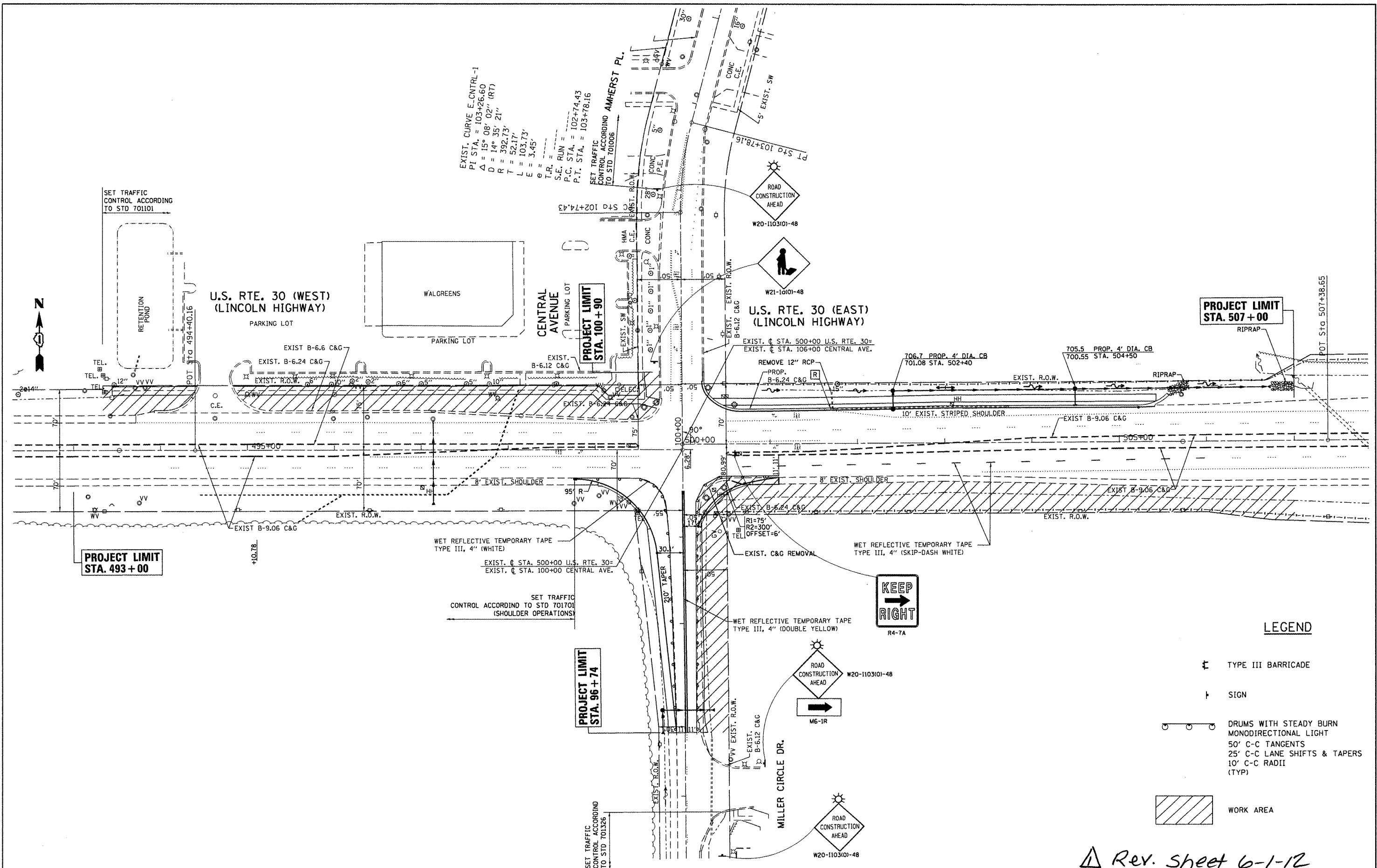


CENTRAL AVE.  
STA 96+74 TO STA 100+90  
PROPOSED IMPROVEMENT  
STAGE 4

Rev. Sheet 6-1-12

FILE NAME =	USER NAME = mdjja	DESIGNED -	REVISED -	<b>STATE OF ILLINOIS DEPARTMENT OF TRANSPORTATION</b>	<b>SUGGESTED STAGING AND TRAFFIC CONTROL TYPICAL SECTION US 30 AT CENTRAL AVE.</b>	F.A.P. RTE.	SECTION	COUNTY	TOTAL SHEETS	SHEET NO.	
cr\pw_work\pwidot\mdjja\dms92836\PI5688-staging-Design.dgn	PLT SCALE = 100.0000' / 1"	DRAWN -	REVISED -			353	23-N-4	COOK	68	20	
	PLT DATE = 4/26/2012	CHECKED -	REVISED -			CONTRACT NO. 60L21					
		DATE -	REVISED -			ILLINOIS FED. AID PROJECT					



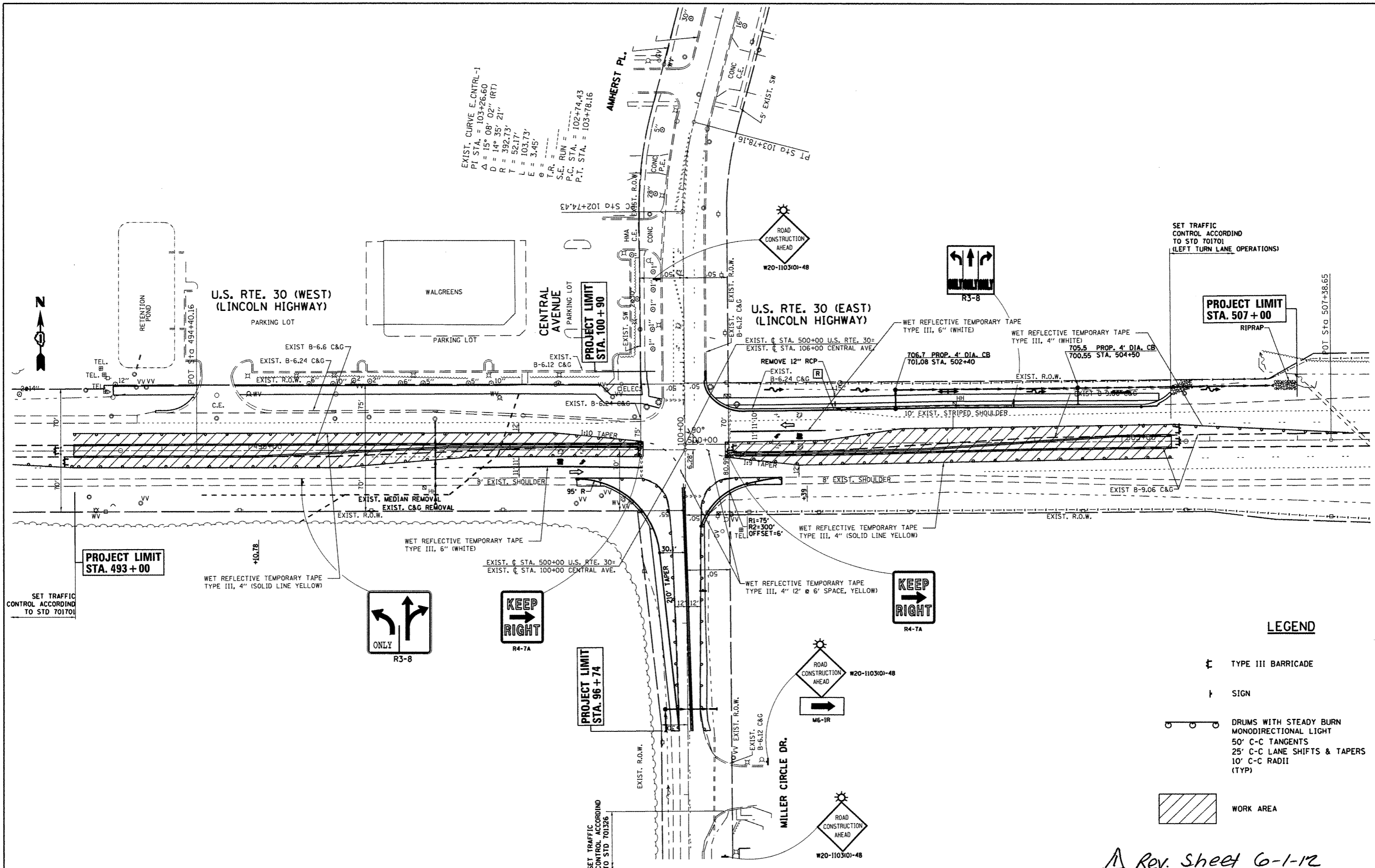


EXIST. CURVE E. CNTRL-1  
 P.I. STA. = 103+26.60  
 $\Delta = 15^\circ 08' 02''$  (RT)  
 $D = 14^\circ 35' 21''$   
 $R = 392.73'$   
 $T = 52.17'$   
 $L = 103.73'$   
 $E = 3.45'$   
 $\theta =$   
 T.R. =  
 S-E. RUN =  
 P.C. STA. = 102+74.43  
 P.T. STA. = 103+78.16  
 SET TRAFFIC CONTROL ACCORDING TO STD 701006

- LEGEND**
- TYPE III BARRICADE
  - SIGN
  - DRUMS WITH STEADY BURN MONODIRECTIONAL LIGHT  
50' C-C TANGENTS  
25' C-C LANE SHIFTS & TAPERS  
10' C-C RADII (TYP)
  - WORK AREA

*Rev. Sheet 6-1-12*

FILE NAME =	USER NAME = msdyje	DESIGNED -	REVISED -	<b>STATE OF ILLINOIS DEPARTMENT OF TRANSPORTATION</b>	<b>SUGGESTED STAGING AND TRAFFIC CONTROL STAGE II US 30 AT CENTRAL AVE.</b>		F.A.P. RTE.	SECTION	COUNTY	TOTAL SHEETS	SHEET NO.
cr:\pwwork\msdyje\dms92836\P156888-8-staging-Design.dgn	PLOT SCALE = 100.0000' / 1"	DRAWN -	REVISED -				353	23-N-4	COOK	68	22
PLOT DATE = 4/26/2012	DATE -	CHECKED -	REVISED -		SCALE: SHEET OF SHEETS STA. TO STA.		CONTRACT NO. 60L21				
		DATE -	REVISED -		ILLINOIS FED. AID PROJECT						



EXIST. CURVE E.CNTRL-1  
 P.I. STA. = 103+26.60  
 $\Delta = 15^\circ 08' 02''$  (RT)  
 $D = 14^\circ 35' 21''$   
 $R = 392.73'$   
 $T = 52.17'$   
 $L = 103.73'$   
 $E = 3.45'$   
 $\theta =$   
 $T.R. =$   
 $S.E. RUN =$   
 $P.C. STA. = 102+74.43$   
 $P.T. STA. = 103+78.16$

SET TRAFFIC CONTROL ACCORDING TO STD 701701 (LEFT TURN LANE OPERATIONS)

PROJECT LIMIT STA. 507+00

PROJECT LIMIT STA. 493+00

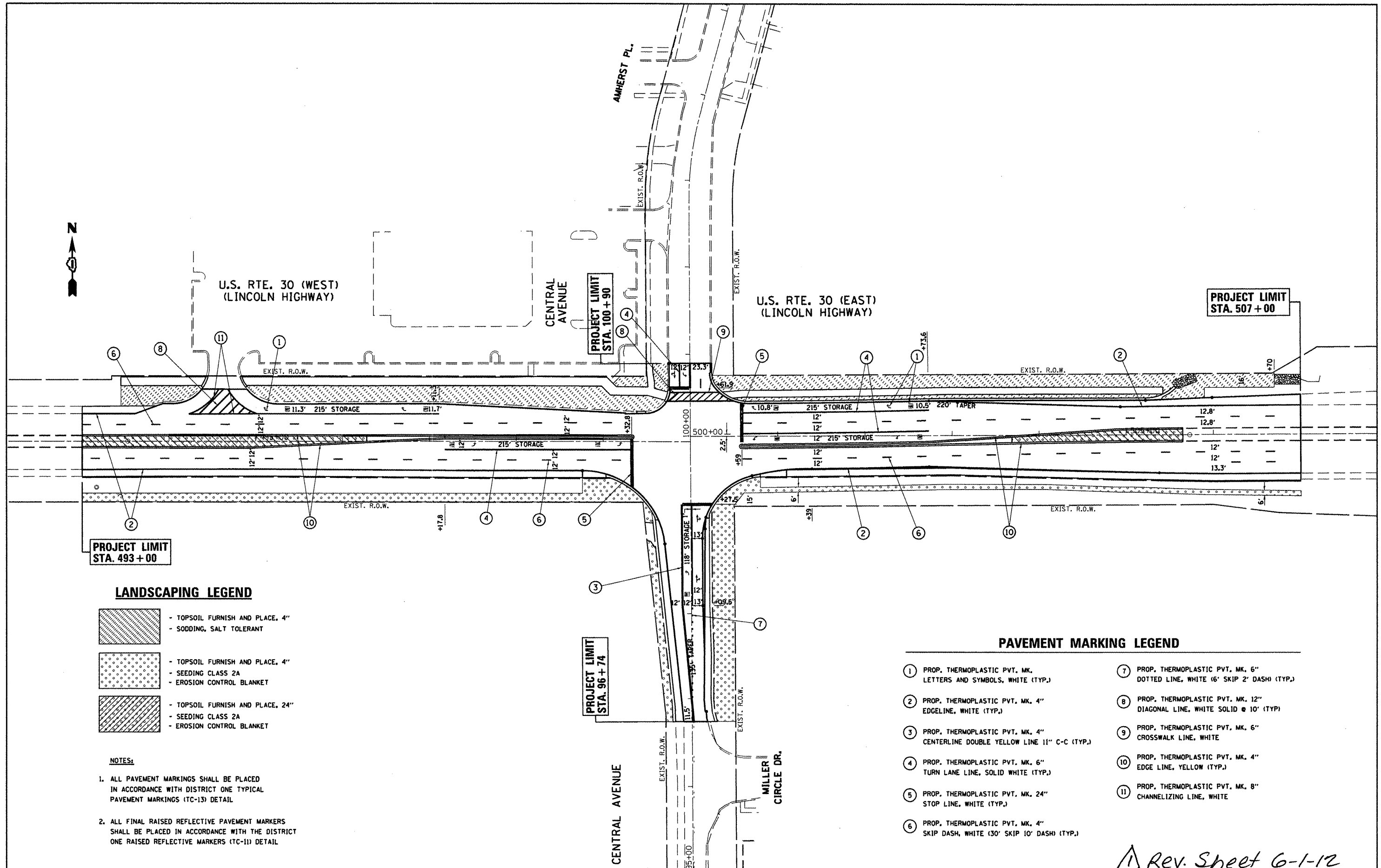
PROJECT LIMIT STA. 96+74

**LEGEND**

- TYPE III BARRICADE
- SIGN
- DRUMS WITH STEADY BURN MONODIRECTIONAL LIGHT
- 50' C-C TANGENTS
- 25' C-C LANE SHIFTS & TAPERS
- 10' C-C RADII (TYP)
- WORK AREA

*Rev. Sheet G-1-12*

FILE NAME =	USER NAME = midyjo	DESIGNED -	REVISED -	<b>STATE OF ILLINOIS DEPARTMENT OF TRANSPORTATION</b>	<b>SUGGESTED STAGING AND TRAFFIC CONTROL STAGE III US 30 AT CENTRAL AVE.</b>			F.A.P. RTE.	SECTION	COUNTY	TOTAL SHEETS	SHEET NO.			
ct:\pw\work\p\midot\midyjo\dms92836\155688	8-staging-Design.dgn	DRAWN -	REVISED -		SCALE:	SHEET	OF	SHEETS	STA.	TO STA.	353	23-N-4	COOK	68	23
	PLOT SCALE = 1/8" = 100.0000' / 1" IN.	CHECKED -	REVISED -												
	PLOT DATE = 4/26/2012	DATE -	REVISED -												
								CONTRACT NO. 60L21							
								ILLINOIS FED. AID PROJECT							



**PROJECT LIMIT  
STA. 493 + 00**

**PROJECT LIMIT  
STA. 96 + 74**

**PROJECT LIMIT  
STA. 507 + 00**

**LANDSCAPING LEGEND**

- TOPSOIL FURNISH AND PLACE, 4"  
- SODDING, SALT TOLERANT
- TOPSOIL FURNISH AND PLACE, 4"  
- SEEDING CLASS 2A  
- EROSION CONTROL BLANKET
- TOPSOIL FURNISH AND PLACE, 24"  
- SEEDING CLASS 2A  
- EROSION CONTROL BLANKET

**NOTES:**

1. ALL PAVEMENT MARKINGS SHALL BE PLACED IN ACCORDANCE WITH DISTRICT ONE TYPICAL PAVEMENT MARKINGS (TC-13) DETAIL
2. ALL FINAL RAISED REFLECTIVE PAVEMENT MARKERS SHALL BE PLACED IN ACCORDANCE WITH THE DISTRICT ONE RAISED REFLECTIVE MARKERS (TC-11) DETAIL

**PAVEMENT MARKING LEGEND**

- ① PROP. THERMOPLASTIC PVT. MK. LETTERS AND SYMBOLS, WHITE (TYP.)
- ② PROP. THERMOPLASTIC PVT. MK. 4" EDGELINE, WHITE (TYP.)
- ③ PROP. THERMOPLASTIC PVT. MK. 4" CENTERLINE DOUBLE YELLOW LINE 11" C-C (TYP.)
- ④ PROP. THERMOPLASTIC PVT. MK. 6" TURN LANE LINE, SOLID WHITE (TYP.)
- ⑤ PROP. THERMOPLASTIC PVT. MK. 24" STOP LINE, WHITE (TYP.)
- ⑥ PROP. THERMOPLASTIC PVT. MK. 4" SKIP DASH, WHITE (30' SKIP 10' DASH) (TYP.)
- ⑦ PROP. THERMOPLASTIC PVT. MK. 6" DOTTED LINE, WHITE (6' SKIP 2' DASH) (TYP.)
- ⑧ PROP. THERMOPLASTIC PVT. MK. 12" DIAGONAL LINE, WHITE SOLID @ 10" (TYP.)
- ⑨ PROP. THERMOPLASTIC PVT. MK. 6" CROSSWALK LINE, WHITE
- ⑩ PROP. THERMOPLASTIC PVT. MK. 4" EDGE LINE, YELLOW (TYP.)
- ⑪ PROP. THERMOPLASTIC PVT. MK. 8" CHANNELIZING LINE, WHITE

*Rev. Sheet 6-1-12*

FILE NAME = P156808-sht-pmk.dgn

USER NAME = midjja  
 PLOT SCALE = 1/8" = 1'-0"  
 PLOT DATE = 5/4/2012

DESIGNED -	REVISED -
DRAWN -	REVISED -
CHECKED -	REVISED -
DATE -	REVISED -

**STATE OF ILLINOIS  
DEPARTMENT OF TRANSPORTATION**

**U.S. ROUTE 30 (LINCOLN HIGHWAY) AT CENTRAL AVENUE  
PAVEMENT MARKING AND LANDSCAPING PLAN**

SCALE: 1" = 50'      SHEET NO. OF SHEETS      STA. TO STA.

F.A.P. RTE. 353	SECTION 23-N-4	COUNTY COOK	TOTAL SHEETS 68	SHEET NO. 29
CONTRACT NO. 60L21				
ILLINOIS FED. AID PROJECT				