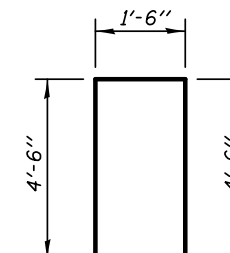


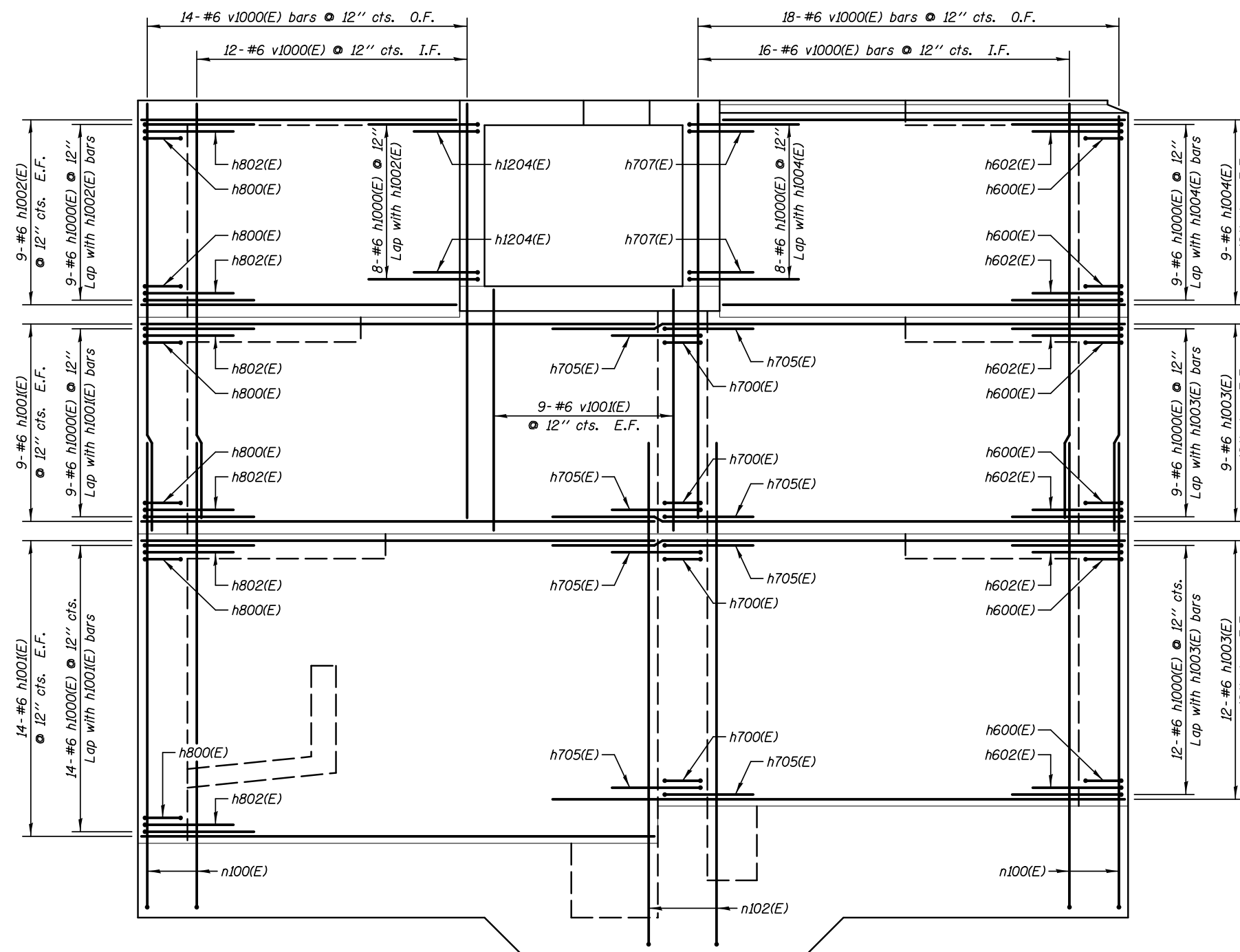
### BILL OF MATERIAL

BAR	NO.	SIZE	LENGTH	SHAPE
h1000(E)	78	#6	10'-6"	
h1001(E)	46	#6	20'-8"	
h1002(E)	18	#6	12'-8"	
h1003(E)	42	#6	23'-0"	
h1004(E)	18	#6	16'-2"	
v1000(E)	60	#6	16'-9"	
v1001(E)	18	#6	9'-8"	
Reinforcement Bars, Epoxy Coated				
			LB	6660

Work this sheet with sheet SA-32.



**BAR h1000(E)**



**ELEVATION 5**

**KNIGHT**  
Engineers & Architects

SCALE - NONE  
DATE - 3/22/2012

DESIGNED - WPM  
CHECKED - TB  
DRAWN - TB  
CHECKED - WPM

REVISED -  
REVISED -  
REVISED -  
REVISED -

**STATE OF ILLINOIS  
DEPARTMENT OF TRANSPORTATION**

**REINFORCEMENT DETAILS - ELEVATIONS  
PUMP STATION 47**

SHEET NO. SA-29 OF 34 SHEETS

F.A.P. RTE.	SECTION	COUNTY	TOTAL SHEETS	SHEET NO.
338/IL 59	2011-035-I	DUPAGE	181	104
CONTRACT NO. 60P41				

ILLINOIS FED. AID PROJECT