

EXHAUST/SUPPLY FAN SCHEDULE

TAG	LOCATION	CFM	STATIC PRESS. IN. W.C.	FAN DATA			MOTOR DATA			MANUFACTURER AND MODEL	WEIGHT (LBS.)	REMARKS
				FAN TYPE	RPM	DRIVE	HP	VOLT	PHASE			
SF-1	DRY WELL	7500	0.375	INLINE	1011	BELT	3	460	3	COOK 24CVB OR APPROVED EQUAL	400	①
SF-2	WET WELL	7500	0.5	INLINE	1011	BELT	3	460	3	COOK 24CVB OR APPROVED EQUAL	400	①
EF-1	DRY WELL	7500	0.5	WALL	1011	BELT	2	460	3	GREENHECK CWB-240-20 OR APPROVED EQUAL	200	
EF-2	WET WELL	7500	0.375	INLINE	1011	BELT	3	460	3	COOK 24CVB OR APPROVED EQUAL	400	①
EF-3	ELECTRICAL ROOM	500	0.375	SIDEWALL	1725	DIRECT	1/4	115	1	COOK 12A17D OR APPROVED EQUAL	110	

① EXPLOSION PROOF

ELECTRIC UNIT HEATER SCHEDULE

TAG	CFM	TYPE	HEATING ELEMENT DATA					WEIGHT (LBS.)	MANUFACTURER AND MODEL	REMARKS
			MBH	KW	VOLT	PH	AMPS			
UH-1	700	VERTICAL	17.1	5	480	3	9.7	135	BERKO RUX500 OR APPROVED EQUAL	① ②
UH-2	350	VERTICAL	17.1	5	480	3	6	23	BERKO HUHAAS OR APPROVED EQUAL	②
UH-3	700	VERTICAL	17.1	5	480	3	9.7	135	BERKO RUX500 OR APPROVED EQUAL	① ②
UH-4	700	VERTICAL	17.1	5	480	3	9.7	135	BERKO RUX500 OR APPROVED EQUAL	① ②

① EXPLOSION PROOF

② UNIT MOUNTED THERMOSTAT

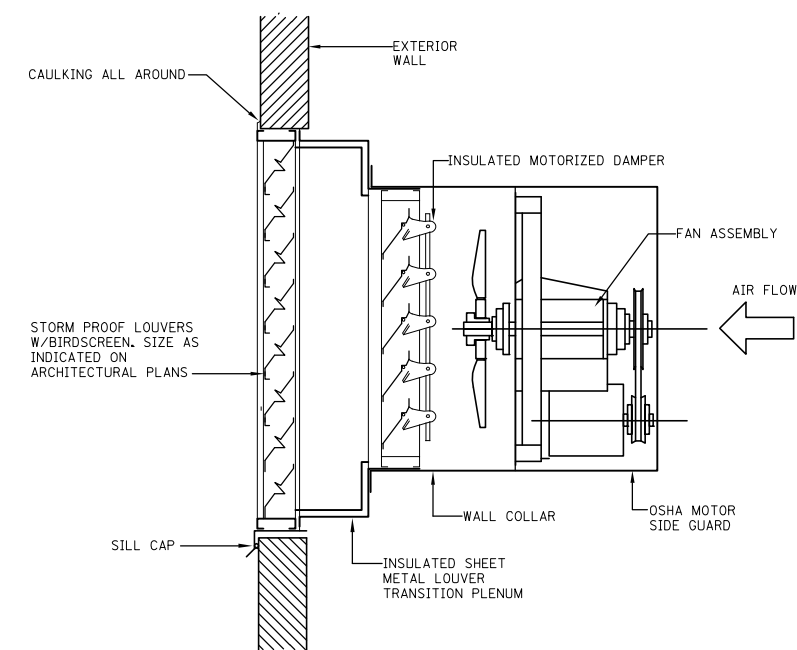
DIFFUSER-REGISTER-GRILLE SCHEDULE

TAG	SERVICE	TYPE	NECK SIZE	DAMPER	MATERIAL	FINISH	MANUFACTURER AND MODEL
A	EXHAUST	GRILLE	14x24	OBD	ALUMINUM	CLEAR ANODIZED	TITUS 355ZR OR APPROVED EQUAL
B	SUPPLY	REGISTER	14x18	OBD	STAINLESS STEEL	MILL	TITUS 300RL-SS OR APPROVED EQUAL

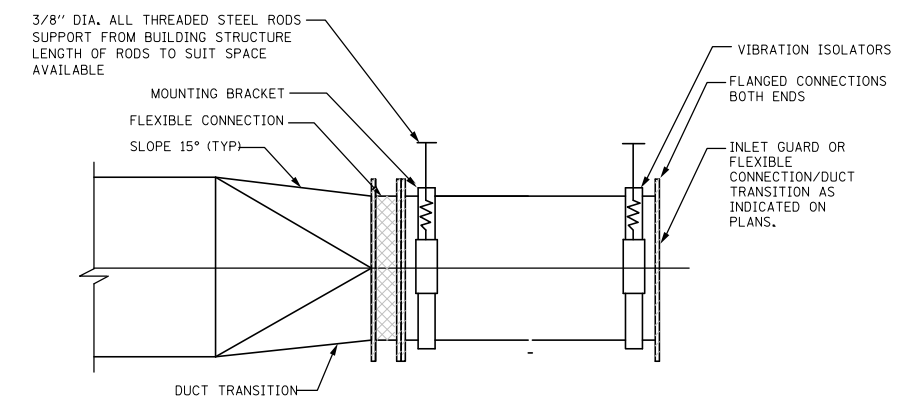
LOUVER SCHEDULE

TAG	SERVICE	DIMENSIONS		FREE AREA (SQ FT)	CFM	VELOCITY (FPM)	WATER PENETRATION VELOCITY (FPM)	MANUFACTURER AND MODEL
		WIDTH	HEIGHT					
L-1	INTAKE	15'-10 3/4"	2'-7 3/4"	9.9	7500	756	1250	RUSKIN MODEL ELF6350DMP OR APPROVED EQUAL (TRIANGULAR)
L-2	EXHAUST	16"	16"	1.1	500	454	1250	RUSKIN MODEL ELF6350DMP OR APPROVED EQUAL
L-3	EXHAUST	6'-0"	2'-0"	7.5	7500	1000	1250	RUSKIN MODEL ELF6350DMP OR APPROVED EQUAL
L-4	INTAKE	8'-4"	2'-5"	12.4	7500	604	1250	RUSKIN MODEL ELF6350DMP OR APPROVED EQUAL
L-5	INTAKE	16"	16"	1.1	500	454	1250	RUSKIN MODEL ELF6350DMP OR APPROVED EQUAL

NOTE: FINISH SHALL BE KYNAR 500 WITH CUSTOM COLOR AS SELECTED BY THE ARCHITECT.



1 TYPICAL SIDEWALL PROPELLER FAN MOUNTING DETAIL
SCALE: NONE



2 TYPICAL INLINE FAN DETAIL
SCALE: NONE