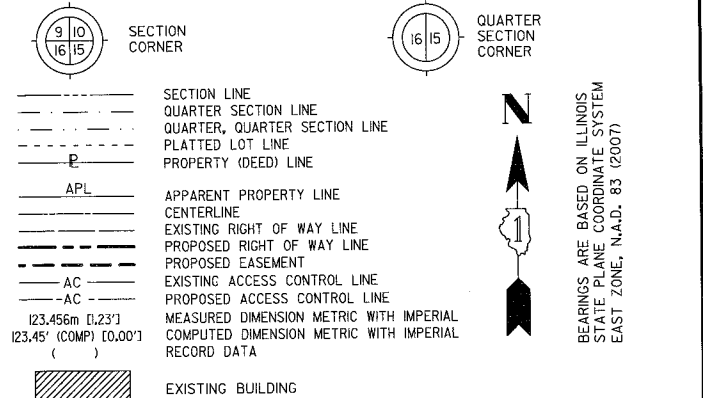
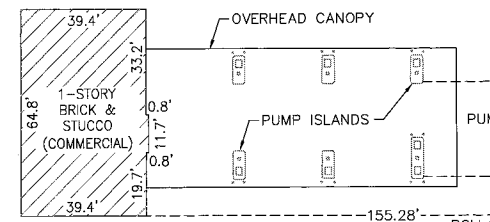
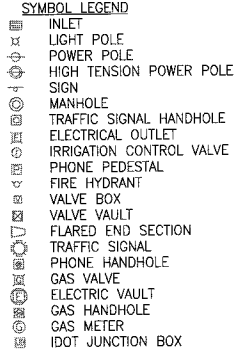


PART OF THE NE 1/4 SECTION 21 AND PART OF THE NW 1/4 SECTION 22, ALL IN T38N, R9E OF THE 3rd PM, NAPERVILLE TOWNSHIP, DUPAGE COUNTY, ILLINOIS.

LEGEND



BEARINGS ARE BASED ON ILLINOIS STATE PLANE COORDINATE SYSTEM EAST ZONE, N.A.D. 83 (2007)



PRINTING DATE: DECEMBER 14, 2011 - KAG \Microstation\Sheet AB R4.dgn

MEIJER SUBDIVISION RECORDED JANUARY 28, 2000 AS DOCUMENT NO. R2000-014525

SEE SHEET A21 FOR PARCEL 1HJ0014 TOTAL HOLDING

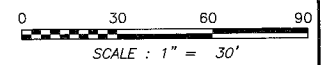
SEE SHEET A19 FOR PARCEL 1HJ0010 TOTAL HOLDING

GLACIER PARK RESUBDIVISION NO. 1 RECORDED MARCH 28, 1990 AS DOCUMENT NO. R90-036578

THIS IS TO CERTIFY THAT WE, CLAASSEN, WHITE & ASSOCIATES, P.C., AN ILLINOIS PROFESSIONAL DESIGN FIRM LAND SURVEYING CORPORATION NUMBER I64-004039, HAVE SURVEYED THE PLAT OF HIGHWAYS SHOWN HEREON BETWEEN SECTION 21, TOWNSHIP 38 NORTH, RANGE 9 EAST, AND SECTION 22, TOWNSHIP 38 NORTH, RANGE 9 EAST OF THE THIRD PRINCIPAL MERIDIAN, DUPAGE COUNTY, THAT THE SURVEY IS TRUE AND COMPLETE AS SHOWN TO THE BEST OF MY KNOWLEDGE AND BELIEF, THAT THE PLAT CORRECTLY REPRESENTS SAID SURVEY, THAT ALL MONUMENTS FOUND AND ESTABLISHED ARE OF PERMANENT QUALITY AND OCCUPY THE POSITIONS SHOWN THEREON AND THAT THE MONUMENTS ARE SUFFICIENT TO ENABLE THE SURVEY TO BE RETRACED. THIS SURVEY CONFORMS TO THE CURRENT ILLINOIS MINIMUM STANDARDS FOR A BOUNDARY SURVEY. MADE FOR THE DEPARTMENT OF TRANSPORTATION, STATE OF ILLINOIS.

DATED AT JOLIET, ILLINOIS THIS ____ DAY OF _____, 2011 A.D.

DAVID A. CLAASSEN
ILLINOIS PROFESSIONAL LAND SURVEYOR NO. 035-002962
LICENSE EXPIRES NOVEMBER 30, 2012
THIS PROFESSIONAL SERVICE CONFORMS TO THE CURRENT ILLINOIS MINIMUM STANDARDS FOR A BOUNDARY SURVEY.



PROJECT COORDINATES ARE SHOWN

NO.	STATION	OFFSET	NORTH-COORDINATES-EAST-
121	3925+41.88	00.00' LT	N 857,937.6168 E 19,090.1583
297	3925+69.94	90.00' LT	N 857,986.4265 E 19,000.3326
298	3925+72.50	95.00' LT	N 857,969.0199 E 18,995.3484
882	3925+79.73	85.00' RT	N 857,975.1543 E 19,175.3892
834	3925+91.73	96.99' RT	N 857,987.0738 E 19,167.4555
1618	3925+92.55	122.00' RT	N 857,987.7456 E 19,212.4691
299	3925+94.53	95.00' LT	N 857,991.0493 E 18,995.4830
1620	3925+94.53	127.00' LT	N 857,991.2446 E 18,963.4836
831	3926+41.73	90.99' RT	N 858,037.1093 E 19,181.7601
1510	3926+41.73	122.00' RT	N 858,036.9199 E 19,212.7695
884	3926+47.72	85.00' RT	N 858,043.1382 E 19,175.8045
1619	3926+51.87	122.00' RT	N 858,047.0593 E 19,212.8315
271	3926+53.30	85.00' RT	N 858,048.7186 E 19,175.8386
272	3926+66.00	85.00' RT	N 858,061.4184 E 19,175.9162
273	3926+66.00	75.00' RT	N 858,061.4794 E 19,165.9164
1622	3926+86.73	95.00' LT	N 858,083.2445 E 18,996.0462
1621	3926+86.73	127.00' LT	N 858,083.4400 E 18,964.0468
275	3928+18.57	75.00' RT	N 858,214.0466 E 19,166.8485
276	3928+18.57	85.00' RT	N 858,213.9855 E 19,176.8483
277	3928+28.57	85.00' RT	N 858,223.9853 E 19,176.9094
278	3928+28.57	75.00' RT	N 858,224.0464 E 19,166.9096
274	3929+03.73	75.00' RT	N 858,299.2055 E 19,167.3687
1104	3929+22.05	95.00' LT	N 858,318.5659 E 18,997.4838

PARCEL NUMBER	OWNER	TOTAL HOLDING ACRES	PART TAKEN ACRES	REMAINDER ACRES	PREV. DED. ACRES	EASEMENT ACRES	EASEMENT PURPOSE	PERMANENT TAX INDEX NUMBER	PROPERTY ACQUIRED BY
1HJ0010A	CENTRO NP HOLDINGS 6 SPE, LLC, A DELAWARE LIMITED LIABILITY COMPANY	50.079	0.201	49.652				07-22-102-009	
1HJ0010B			0.041						
1HJ0010C			0.169						
1HJ0010D			0.016						
1HJ0010E			0.060						
1HJ0014A	MEIJER STORES LIMITED PARTNERSHIP, A MICHIGAN LIMITED PARTNERSHIP	38.327	0.250	37.940				07-21-200-040	
1HJ0014B			0.059						
1HJ0014C			0.018						
1HJ0014D			0.018						
1HJ0014E			0.077						
1HJ0020	SLEVIN CAPITAL DEVELOPMENT, INC., A CALIFORNIA CORPORATION	1.152	0.009	1.075			CONSTRUCTION	07-22-102-004	
1HJ0020PE			0.002						
1HJ0020TE-B			0.002						
1HJ0020TE-B			0.002						

- NOTES:
- 1) ALL COORDINATES SHOWN HEREON ARE PROJECT. ALL DISTANCES SHOWN HEREON ARE GROUND.
 - 2) BEARINGS SHOWN HEREON ARE BASED ON ILLINOIS STATE PLANE COORDINATE SYSTEM EAST ZONE, NAD 83, (2007).
 - 3) THE COMBINATION FACTOR USED FOR THIS PROJECT = 0.99994777.
 - 4) COORDINATE CONVERSION
- NAD83 (2007) STATE PLANE COORDINATES TO PROJECT COORDINATES:
A) DIVIDE THE STATE PLANE NAD83 GRID COORDINATES BY THE COMBINATION FACTOR.
B) SUBTRACT 1,000,000.00 FROM THESE NORTHINGS AND EASTINGS.
- PROJECT COORDINATES TO NAD83 (2007) STATE PLANE COORDINATES:
A) ADD 1,000,000.00 TO THE PROJECT NORTHINGS AND EASTINGS.
B) MULTIPLY THESE COORDINATES BY THE COMBINATION FACTOR.
- 5) THE NGS MONUMENT HELD FOR THIS PROJECT IS FIRST ORDER P.I.D. AA3730.
- | NAD83 (2007) S.P. | PROJECT (GROUND) |
|-------------------|------------------|
| N. 1,869,327.5048 | N. 869,425.1449 |
| E. 1,023,602.1293 | E. 23,655.5948 |

RECEIVED
DEC 14 2011
PLATS & LEGALS

Claassen, White & Associates, P.C.
121 AIRPORT DRIVE, UNIT 1
JOLIET, ILLINOIS 60431
(815) 744-3720

SHEET 1 IS A COVER SHEET AND NOT RECORDED.

**PLAT OF HIGHWAYS
STATE OF ILLINOIS
DEPARTMENT OF TRANSPORTATION
F.A.P. 338 ILLINOIS ROUTE 59**

SECTION FERRY RD. TO AURORA AVE. DUPAGE COUNTY
PROJECT JOB NO. R-91-035-09
STATION 3925+00 TO STATION 3929+22
SCALE: 1" = 30' SHEET AB OF 222

**BUREAU OF LAND ACQUISITION
201 WEST CENTER COURT
SCHAUMBURG, ILLINOIS 60196-1096**

F.A.P. 338 ILLINOIS ROUTE 59, SECTION FERRY ROAD TO AURORA AVENUE, JOB. NO. R-91-035-09.

DECEMBER 13, 2011
NOVEMBER 29, 2011
NOVEMBER 15, 2011
SEPTEMBER 6, 2011
REVISION: ADDED STATIONING TO EXISTING ROW.

DELETED 0010TE-C & 0014TE-B, ADDED 0010PE & 0014
ADDED 1HJ0010TE-C, 1HJ0014TE-B, 1HJ0019TE-B REMOVED 10PE, 14PE & 19PE
DELETED 0010TE-C, 0014TE-B, 0019TE-B & 0020TE-A, ADDED 0010PE, 0014PE, 0019PE & 0020PE
REVISED OWNER TABLE
MADE BY: JLS