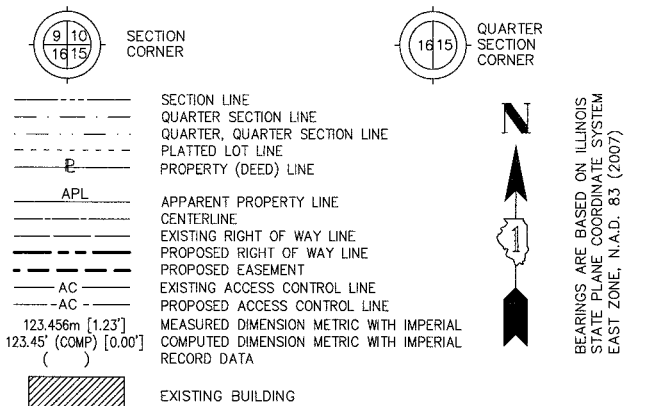
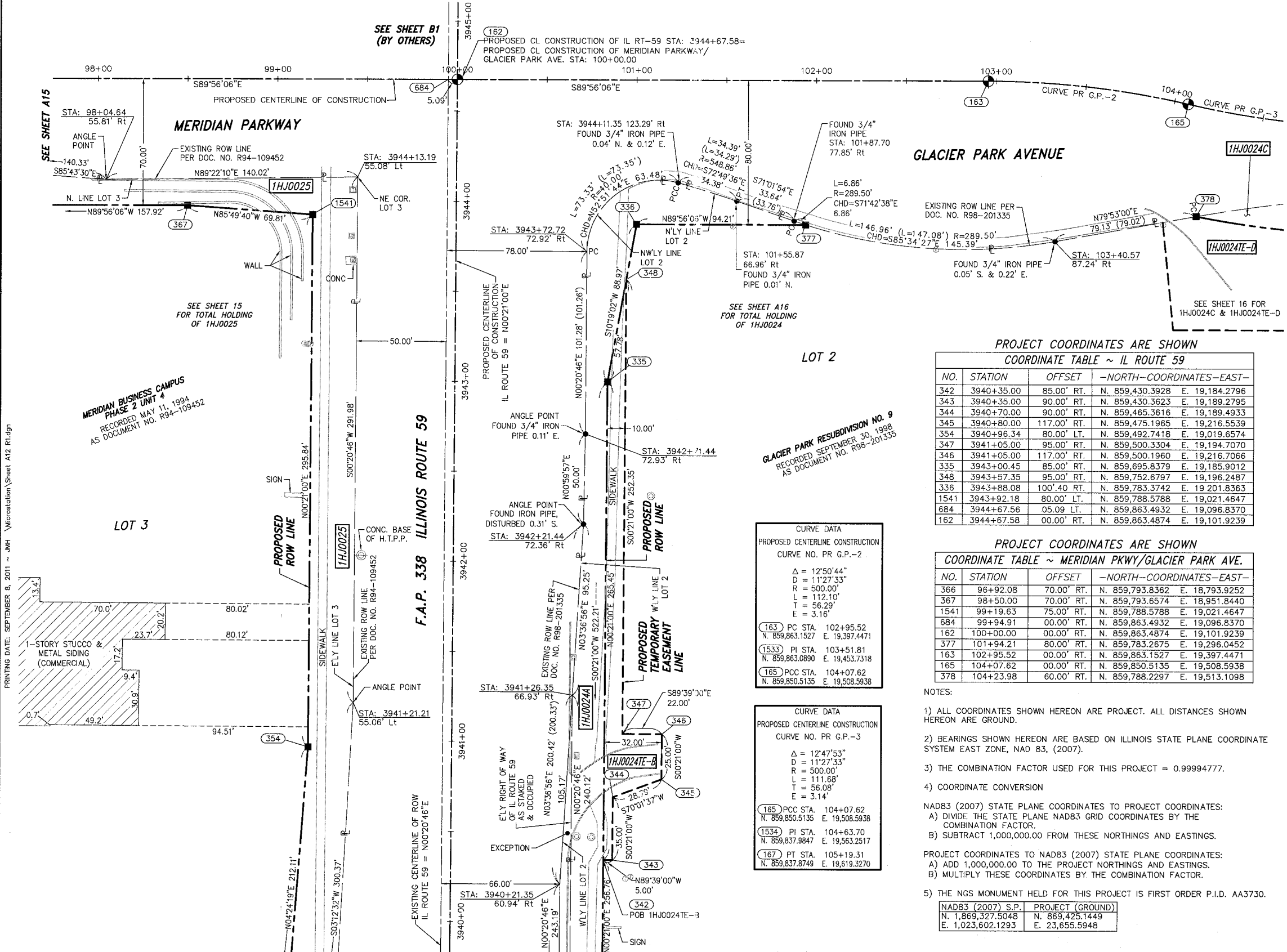


PART OF THE SE 1/4 SECTION 16 AND PART OF THE SW 1/4 SECTION 15, ALL IN T38N, R9E OF THE 3rd PM, NAPERVILLE TOWNSHIP, DUPAGE COUNTY, ILLINOIS.

LEGEND



BEARINGS ARE BASED ON ILLINOIS STATE PLANE COORDINATE SYSTEM EAST ZONE, N.A.D. 83 (2007)



PROJECT COORDINATES ARE SHOWN  
COORDINATE TABLE ~ IL ROUTE 59

NO.	STATION	OFFSET	NORTH	EAST
342	3940+35.00	85.00' RT.	N. 859,430.3928	E. 19,184.2796
343	3940+35.00	90.00' RT.	N. 859,430.3623	E. 19,189.2795
344	3940+70.00	90.00' RT.	N. 859,465.3616	E. 19,189.4933
345	3940+80.00	117.00' RT.	N. 859,475.1965	E. 19,216.5539
354	3940+96.34	80.00' LT.	N. 859,492.7418	E. 19,019.6574
347	3941+05.00	95.00' RT.	N. 859,500.3304	E. 19,194.7070
346	3941+05.00	117.00' RT.	N. 859,500.1960	E. 19,216.7066
335	3943+00.45	85.00' RT.	N. 859,695.8379	E. 19,185.9012
348	3943+57.35	95.00' RT.	N. 859,752.6797	E. 19,196.2487
336	3943+88.08	100.40 RT.	N. 859,783.3742	E. 19,201.8363
1541	3943+92.18	80.00' LT.	N. 859,788.5788	E. 19,021.4647
684	3944+67.56	05.09 LT.	N. 859,863.4932	E. 19,096.8370
162	3944+67.58	00.00' RT.	N. 859,863.4874	E. 19,101.9239

PROJECT COORDINATES ARE SHOWN  
COORDINATE TABLE ~ MERIDIAN PKWY/GLACIER PARK AVE.

NO.	STATION	OFFSET	NORTH	EAST
366	96+92.08	70.00' RT.	N. 859,793.8362	E. 18,793.9252
367	98+50.00	70.00' RT.	N. 859,793.6574	E. 18,951.8440
1541	99+19.63	75.00' RT.	N. 859,788.5788	E. 19,021.4647
684	99+94.91	00.00' RT.	N. 859,863.4932	E. 19,096.8370
162	100+00.00	00.00' RT.	N. 859,863.4874	E. 19,101.9239
377	101+94.21	80.00' RT.	N. 859,783.2675	E. 19,296.0452
163	102+95.52	00.00' RT.	N. 859,863.1527	E. 19,397.4471
165	104+07.62	00.00' RT.	N. 859,850.5135	E. 19,508.5938
378	104+23.98	60.00' RT.	N. 859,788.2297	E. 19,513.1098

- NOTES:
- ALL COORDINATES SHOWN HEREON ARE PROJECT. ALL DISTANCES SHOWN HEREON ARE GROUND.
  - BEARINGS SHOWN HEREON ARE BASED ON ILLINOIS STATE PLANE COORDINATE SYSTEM EAST ZONE, NAD 83, (2007).
  - THE COMBINATION FACTOR USED FOR THIS PROJECT = 0.99994777.
  - COORDINATE CONVERSION  
NAD83 (2007) STATE PLANE COORDINATES TO PROJECT COORDINATES:  
A) DIVIDE THE STATE PLANE NAD83 GRID COORDINATES BY THE COMBINATION FACTOR.  
B) SUBTRACT 1,000,000.00 FROM THESE NORTHINGS AND EASTINGS.  
PROJECT COORDINATES TO NAD83 (2007) STATE PLANE COORDINATES:  
A) ADD 1,000,000.00 TO THE PROJECT NORTHINGS AND EASTINGS.  
B) MULTIPLY THESE COORDINATES BY THE COMBINATION FACTOR.
  - THE NGS MONUMENT HELD FOR THIS PROJECT IS FIRST ORDER P.I.D. AA3730.

NAD83 (2007) S.P.	PROJECT (GROUND)
N. 1,869,327.5048	N. 859,425.1449
E. 1,023,602.1293	E. 23,655.5948

CURVE DATA  
PROPOSED CENTERLINE CONSTRUCTION  
CURVE NO. PR G.P.-2

Δ = 12°50'44"  
D = 11'27'33"  
R = 500.00'  
L = 112.10'  
T = 56.29'  
E = 3.16'

163) PC STA. 102+95.52  
N. 859,863.1527 E. 19,397.4471

1533) PI STA. 103+51.81  
N. 859,863.0890 E. 19,453.7318

165) PCC STA. 104+07.62  
N. 859,850.5135 E. 19,508.5938

CURVE DATA  
PROPOSED CENTERLINE CONSTRUCTION  
CURVE NO. PR G.P.-3

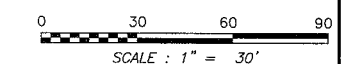
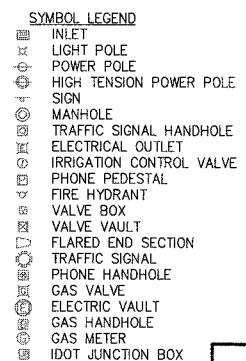
Δ = 12°47'53"  
D = 11'27'33"  
R = 500.00'  
L = 111.68'  
T = 56.08'  
E = 3.14'

165) PCC STA. 104+07.62  
N. 859,850.5135 E. 19,508.5938

1534) PI STA. 104+63.70  
N. 859,837.9847 E. 19,563.2517

167) PT STA. 105+19.31  
N. 859,837.8749 E. 19,619.3270

PARCEL NUMBER	OWNER	TOTAL HOLDING ACRES	PART TAKEN ACRES	REMAINDER ACRES	PREV. DED. ACRES	EASEMENT ACRES	EASEMENT PURPOSE	PERMANENT TAX INDEX NUMBER	PROPERTY ACQUIRED BY
1HJ0024-	TARGET CORPORATION	15.771	0.288	15.221				07-15-304-034	
1HJ0024-1			0.125						
1HJ0024-2			0.137						
1HJ0025	GATEWAY VIRGINIA PROPERTIES, INC., A CALIFORNIA CORPORATION	20.091	0.613	19.478		0.078	CONSTRUCTION	07-16-402-001 07-16-402-003 07-16-402-004 07-16-402-005	



RECEIVED  
SEP 13 2011  
PLATS & LEGALS

Classen, White & Associates, P.C.  
121 AIRPORT DRIVE, UNIT 1  
JOLIET, ILLINOIS 60431  
(815) 744-3720

SHEET 1 IS A COVER SHEET AND NOT RECORDED.

**PLAT OF HIGHWAYS  
STATE OF ILLINOIS  
DEPARTMENT OF TRANSPORTATION  
F.A.P. 338 ILLINOIS ROUTE 59**

SECTION FERRY RD. TO AURORA AVE. DUPAGE COUNTY  
PROJECT JOB NO. R-91-035-09  
STATION 3940+00 TO STATION 3945+00  
SCALE: 1" = 30' SHEET A12 OF ???

**BUREAU OF LAND ACQUISITION  
201 WEST CENTER COURT  
SCHAUMBURG, ILLINOIS 60196-1096**