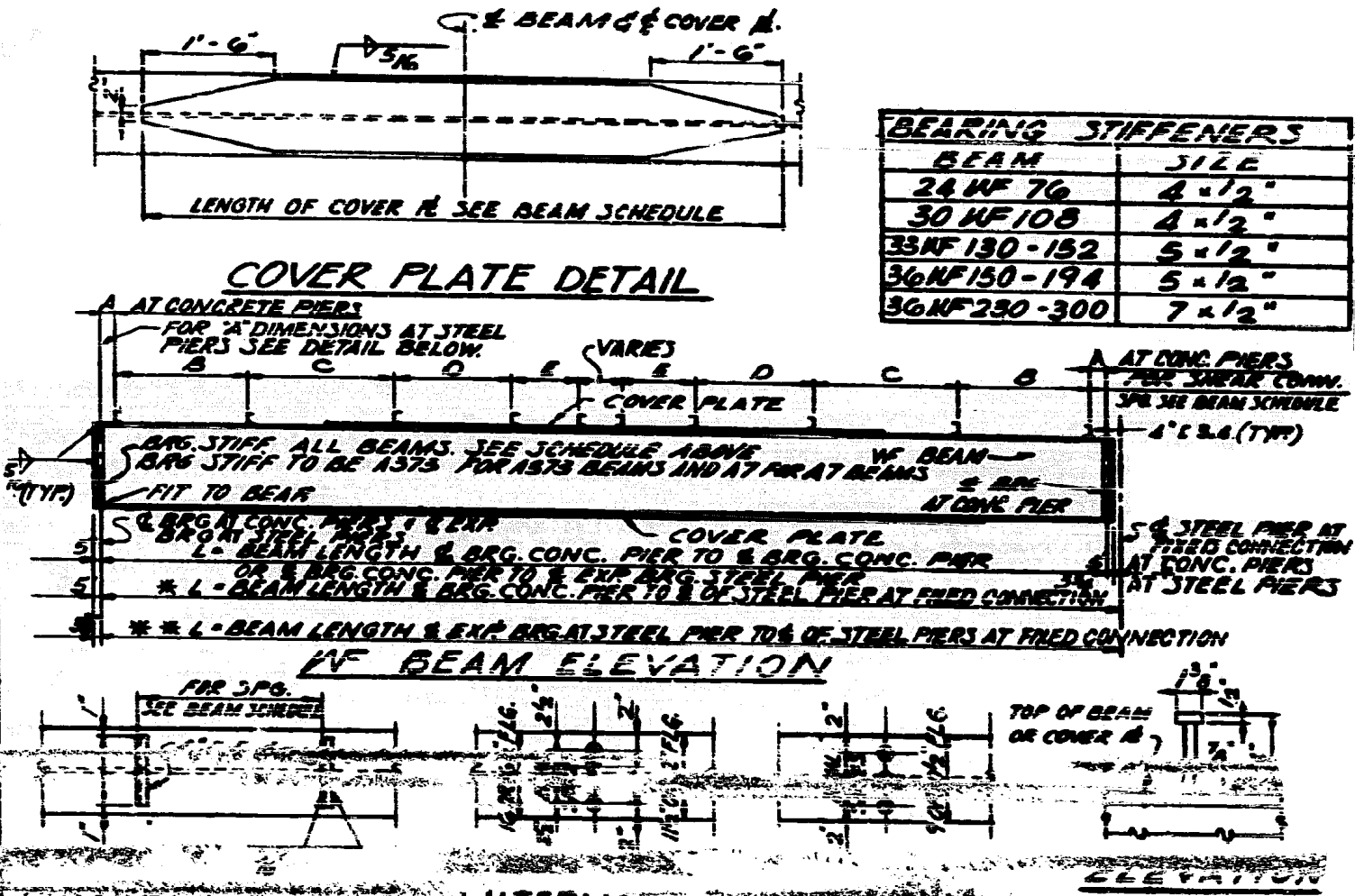


### WF BEAM SCHEDULE

SPAN No.	BEAM No.	L	BEAM SIZE	BOTTOM COVER PLATE	TOP COVER PLATE	SHEAR CONN. SPACING					X,Y DIMENSIONS		
						A	B	C	D	E	X DL	Y DL	XV, YV, CV
A1	2	75'-0"	36WF230	15'-8" x 43'-6"	---	9"	12@9	12@12	6@18	3@24	11/8	7/8	
	3	74'-9"	36WF182	11'-1" x 45'-0"	---	9"	12@9	12@12	6@18	3@24	11/8	7/8	
	4,5,6	74'-9"	36WF170	11'-0" x 48'-0"	---	9"	12@9	12@12	6@18	3@24	13/16	1/8	
	7	74'-9"	36WF230	15'-8" x 37'-9"	---	9"	8@12	---	8@18	8@24	1 3/8	2/8	
A2	1	75'-3"	36WF230	12'-8" x 28'-6"	---	9"	8@18	---	---	12@24	1 5/8	2/8	
	2	74'-8 1/2"	36WF182	9'-8" x 37'-0"	---	9"	6@15	---	8@18	8@24	5/8	13/16	
	3	74'-8 1/2"	36WF174	11'-1 1/8" x 45'-0"	---	9"	12@9	12@12	6@18	3@24	9/16	3/8	
	4,5,6	74'-8 1/2"	36WF170	11'-0" x 48'-0"	---	9"	12@9	12@12	6@18	3@24	13/16	1/8	
A3	7	74'-8 1/2"	36WF230	15'-8" x 37'-9"	---	9"	8@12	---	8@18	8@24	1 1/2	2	
	1	75'-0"	36WF230	15'-8" x 37'-9"	---	9"	8@12	---	8@18	8@24	1 1/8	2 3/16	
A4	2 to 5	74'-8 1/2"	36WF182	11'-1 1/8" x 48'-0"	---	9"	18@9	10@12	7@18	1@24	13/16	1 1/8	
	6	74'-8 1/2"	36WF230	15'-8" x 37'-9"	---	9"	8@12	---	8@18	8@24	1 1/2	2	
A5	1 & 6	74'-3"	36WF230	15'-8" x 37'-9"	---	9"	8@12	---	8@18	8@24	1 3/8	1 1/8	
	2 to 5	74'-3"	36WF170	11'-0" x 48'-0"	---	9"	18@9	10@12	7@18	1@24	13/16	1 1/8	
A6	1 & 6	74'-9"	36WF230	15'-8" x 37'-9"	---	2'-0"	8@12	---	7@18	8@24	1 1/8	1 1/8	
A7	2 to 5	74'-9"	36WF170	11'-0" x 48'-0"	---	2'-0"	18@9	10@12	6@18	1@24	13/16	1 1/8	
A8	1 & 5	65'-6"	36WF182	11'-1" x 39'-9"	---	6"	13@6	10@9	10@12	5@18	1 1/8	1 1/2	
A9	2,3,4	65'-6"	36WF170	11'-1" x 41'-0"	---	6"	13@6	10@9	10@12	5@18	5/8	13/16	
	1 & 5	65'-5 1/2"	36WF182	11'-1" x 39'-9"	---	6"	13@6	10@9	10@12	5@18	1 1/8	1 1/2	3/16
A10	1	73'-6"	36WF280	15'-1 1/2" x 59'-0"	15'-8" x 36'-9"	9"	14@12	4@15	8@18	7@24	2 1/8	2 3/4	3/16
	2 to 6	93'-6"	36WF245	15'-8" x 50'-0"	---	9"	14@12	4@15	8@18	7@24	1 5/8	1 1/2	3/16
A11	2,3,4	56'-7 1/2"	36WF150	10'-3" x 32'-6"	---	6"	18@6	7@9	8@12	3@18	1 1/2	1 1/8	
	5	56'-1 1/2"	36WF150	10'-3" x 32'-6"	---	9"	11@9	9@12	5@18	---	3/4	1	3/16
	1 & 2	56'-7 1/2"	36WF150	10'-3" x 32'-6"	---	9"	11@9	9@12	5@18	---	3/4	1	3/16
A13	1	10'-4"	36WF150	---	---	---	2@12	---	---	1@18	1/8	1/8	
	2	21'-11 1/2"	24WF76	---	---	9"	3@9	4@12	---	2@18	1/8	1/8	
	3	33'-6 1/2"	24WF76	8'-10" x 19'-9"	---	4"	14@4	10@6	---	2@12	1/4	3/8	
	4	45'-1 1/2"	30WF108	9'-8" x 28'-0"	---	4"	6@4	17@6	7@9	6@12	3/8	7/8	
	5	56'-8 1/2"	36WF150	10'-3" x 32'-6"	---	6"	4@6	14@9	7@12	5@18	1 1/8	1 1/8	3/16
A14	1	93'-6"	36WF280	15'-1 1/2" x 59'-0"	15'-8" x 36'-9"	9"	14@12	4@15	8@18	7@24	1 5/8	2 3/8	3/16
	2 to 6	93'-6"	36WF245	15'-8" x 50'-0"	---	9"	14@12	4@15	8@18	7@24	1 3/8	1 5/8	3/16
A15	7	91'-3 1/2"	36WF280	15'-1 1/2" x 57'-0"	15'-8" x 34'-6"	9"	13@12	4@15	8@18	7@24	2 1/8	2 1/2	3/16
	1	78'-6 1/2"	36WF230	15'-1" x 47'-0"	---	9"	11@12	---	6@18	9@24	1 3/8	2 1/8	3/16
A16	2 to 5	78'-6 1/2"	36WF174	11'-1 1/8" x 48'-6"	---	9"	14@9	12@12	6@18	3@24	7/8	1 3/8	
	6	76'-9 1/2"	36WF230	15'-1" x 47'-0"	---	9"	10@12	---	6@18	9@24	1 3/8	2 1/8	3/16
A17	1 & 6	77'-11"	36WF230	15'-1" x 47'-0"	---	9"	9@12	---	7@18	9@24	1 3/8	2 3/8	3/16
	2 to 5	77'-11"	36WF174	11'-1 1/8" x 48'-6"	---	9"	14@9	12@12	6@18	3@24	1 3/8	1 1/8	
A18	2 to 5	76'-11 1/2"	36WF174	11'-1 1/8" x 48'-6"	---	9"	13@9	12@12	6@18	3@24	13/16	1 1/8	
	6	76'-0 1/2"	36WF245	15'-1 1/4" x 45'-0"	12'-1 1/2" x 25'-0"	9"	7@9	15@12	5@18	3@24	1 1/8	2 1/4	3/16



BEARING STIFFENERS	
BEAM	SIZE
24 WF 76	4 x 1/2"
30 WF 108	4 x 1/2"
33 WF 130-152	5 x 1/2"
36 WF 150-194	5 x 1/2"
36 WF 230-300	7 x 1/2"

