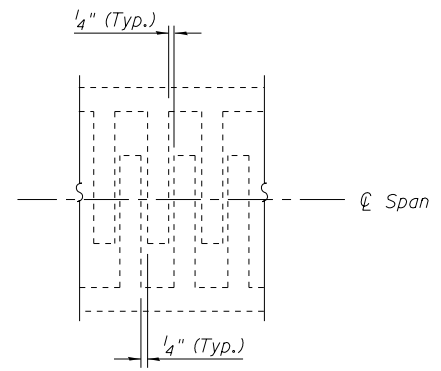


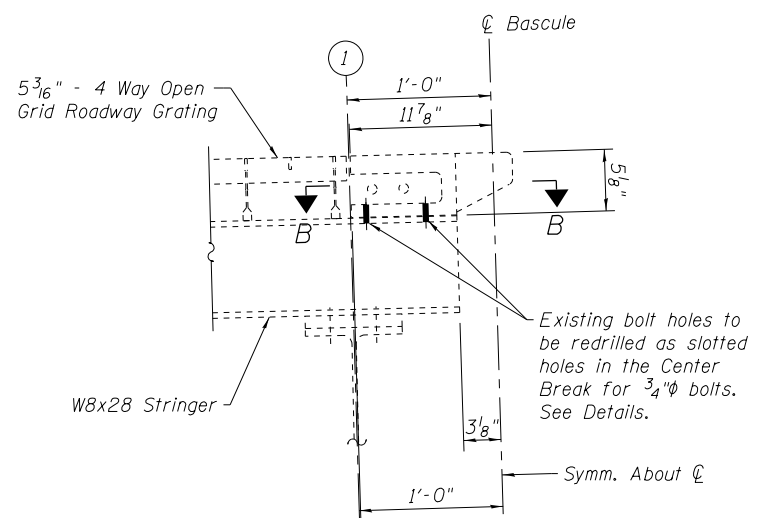
DETAIL 6



FINAL BREAK POSITION

SECTION B-B

*Clip plate washers as required to fit.



SECTION A-A

GENERAL REPAIR PROCEDURE

1. Remove Center Break on North Leaf
2. Slot bolt holes as shown in Details.
3. Reinstall Center Break on North Leaf with break position as shown in Final Break Position.

BILL OF MATERIAL

ITEM	UNIT	QUANTITY
Center Break Adjustment	Each	1

Note:
See Sheet S3 for additional Details.

FILE NAME =	USER NAME =	DESIGNED - AMS	REVISED -
		CHECKED - JMH	REVISED -
	PLOT SCALE =	DRAWN - PRH	REVISED -
	PLOT DATE =	CHECKED - AMS	REVISED -

STATE OF ILLINOIS
DEPARTMENT OF TRANSPORTATION

CENTER LOCK DETAILS - II
STRUCTURE NO. 099-9903

SHEET NO. S4 OF S4 SHEETS

F.A.U. RTE.	SECTION	COUNTY	TOTAL SHEETS	SHEET NO.
341	2011-065-BR	WILL	33	31
				CONTRACT NO. 60P84
ILLINOIS FED. AID PROJECT				