

STATE OF ILLINOIS
DEPARTMENT OF TRANSPORTATION
DIVISION OF HIGHWAYS
PROPOSED
HIGHWAY PLANS

F.A.P. ROUTE 341 (IL 72 - HIGGINS ROAD)
SECTION: 2011-071-N
AT BEVERLY RD AND AT ROCK ROAD DR
INTERSECTION IMPROVEMENT AND TRAFFIC SIGNAL MODERNIZATION
PROJECT: HSIP-0341(055)
COOK AND KANE COUNTY
C-91-628-11

FOR INDEX OF SHEETS, SEE SHEET NO. 2

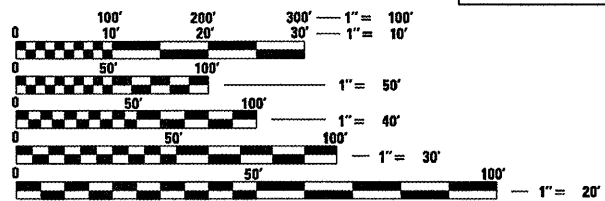
PROJECT LOCATED WITHIN THE VILLAGES OF HOFFMAN ESTATES AND EAST DUNDEE

TRAFFIC DATA
IL RTE 72 (HIGGINS RD)
2010 ADT=34,500
SPEED LIMIT=50 MPH

BEVERLY ROAD
2010 ADT=9,500
SPEED LIMIT=40 MPH

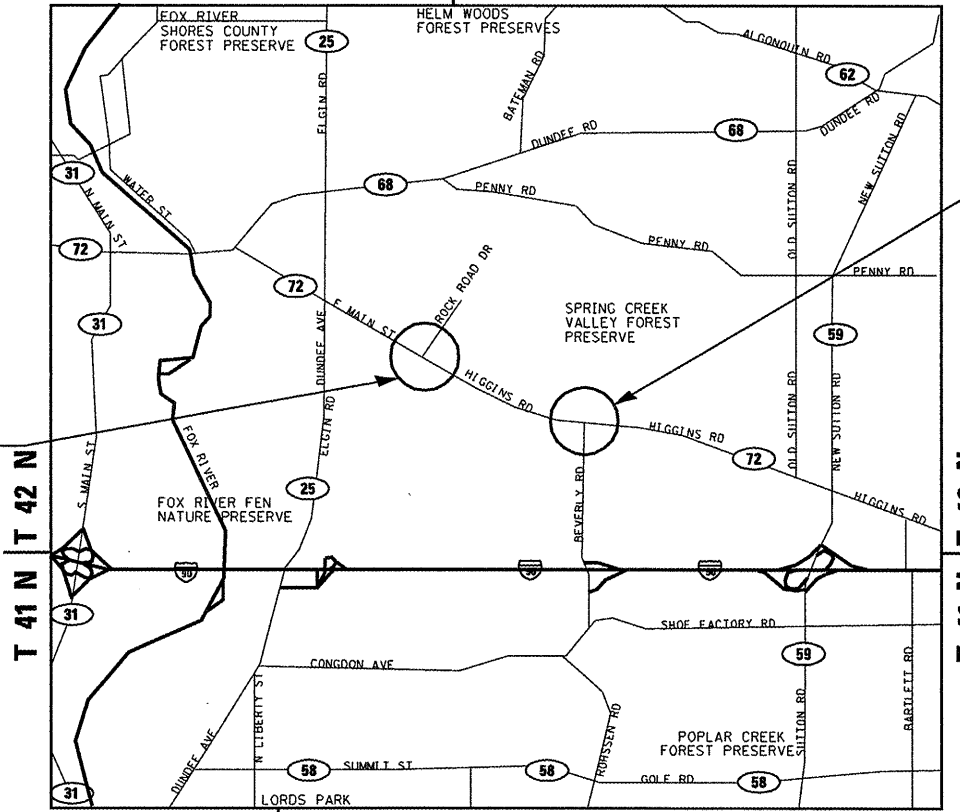
PROJECT LOCATION 2
 ROCK ROAD DR

PROJECT LOCATION 1
 BEVERLY RD



FULL SIZE PLANS HAVE BEEN PREPARED USING STANDARD ENGINEERING SCALES. REDUCED SIZED PLANS WILL NOT CONFORM TO STANDARD SCALES. IN MAKING MEASUREMENTS ON REDUCED PLANS, THE ABOVE SCALES MAY BE USED.

J.U.L.I.E.
 JOINT UTILITY LOCATION INFORMATION FOR EXCAVATION
 1-800-892-0123
 OR 811



R 8 E R 9 E

SCALE: NTS

DUNDEE AND BARRINGTON TOWNSHIP

GROSS LENGTH OF PROJECT = 689.1 FT = 0.13 MILE
 NET LENGTH OF PROJECT = 689.1 FT = 0.13 MILE

MILLENNIA PROFESSIONAL SERVICES
 THOMAS V. NGO, P.E.
 * 062-058379

Thomas V. Ngo
 DATE: 4/2/2012
 SIGNATURE AND SEAL APPLIES TO DRWG.

F.A.P. RTE.	SECTION	COUNTY	TOTAL SHEETS	SHEET NO.
341	2011-071-N	COOK	56	1
FED. ROAD DIST. NO. 1	ILLINOIS	CONTRACT NO.	60P90	

D-91-628-11 *56-5-51



LOCATION OF SECTION INDICATED THUS: —

STATE OF ILLINOIS
 DEPARTMENT OF TRANSPORTATION
 DIVISION OF HIGHWAYS

SUBMITTED April 3 2012
Diane Krueger/ASQ
 DEPUTY DIRECTOR OF HIGHWAYS, REGION ENGINEER

May 11 2012
John D. Baranzelli, P.E.
 acting ENGINEER OF DESIGN AND ENVIRONMENT

May 11 2012
William R. Frey, Jr.
 acting DIRECTOR OF HIGHWAYS, CHIEF ENGINEER

200 22ND Street, Suite 216, Lombard, IL 60148
 630.705.0110 voice, 630.839.2566 fax
 www.mps-il.com

MILLENNIA PROFESSIONAL SERVICES

**PRINTED BY THE AUTHORITY
 OF THE STATE OF ILLINOIS**

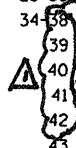
Rev. 6-4-12

DISTRICT ONE - PLAN PREP ENGINEER: KEN ENG (847) 705-4247

CONTRACT NO. 60P90

INDEX OF SHEETS

- 1 COVER SHEET
- 2 INDEX OF SHEETS, HIGHWAY STANDARDS, GENERAL NOTES, AND COMMITMENTS
- 3-8 SUMMARY OF QUANTITIES
- 9 TYPICAL SECTIONS
- 10 ALIGNMENT AND TIES
- 11 REMOVAL PLAN
- 12-13 PLAN AND PROFILE SHEETS
- 14-15 SUGGESTED STAGES CONSTRUCTION AND TRAFFIC CONTROL PLAN
- 16 EROSION AND SEDIMENT CONTROL PLAN
- 17 DRAINAGE AND UTILITY PLAN
- 18 PAVEMENT MARKING PLAN AND LANDSCAPING PLAN
- 19-24 TRAFFIC SIGNAL DISTRICT DETAILS
- 25-33 TRAFFIC SIGNAL PLANS
- 34-38 PROPOSED LIGHTING PLAN
- 39 ELECTRIC SERVICE INSTALLATION AERIAL, REMOTE DISCONNECT (BE-220)
- 40 LIGHT POLE FOUNDATION (BE-301)
- 41 ALUMINUM LIGHT POLE 47'-6" (14.478 m) MOUNTING HEIGHT (BE-400)
- 42 LUMMINAIRE SAFETY CABLE ASSEMBLY (BE-701)
- 43 MISC. ELECTRICAL DETAILS (BE-702)
- 44 CURB OR CURB AND GUTTER REMOVAL AND REPLACEMENT (BD24)
- 45 BUTT JOINTS AND HMA TAPER (BD32)
- 46 HMA TAPER AT EDGE OF P.C.C. PAVEMENT (BD33)
- 47 TRAFFIC CONTROL AND PROTECTION FOR SIDE ROADS, INTERSECTIONS AND DRIVEWAYS (TC10)
- 48 RAISED REFLECTIVE PAVEMENT MARKERS, SNOW PLOW RESISTANT (TC11)
- 49 DISTRICT ONE TYPICAL PAVEMENT MARKINGS (TC13)
- 50 TRAFFIC CONTROL AND PROTECTION AT TURN BAYS (TO REMAIN OPEN TO TRAFFIC) (TC14)
- 51 PAVEMENT MARKING LETTERS AND SYMBOLS FOR TRAFFIC STAGING (TC-16)
- 52 ARTERIAL ROAD INFORMATION SIGN (TC22)
- 53-54 CROSS SECTIONS - IL ROUTE 72
- 55-56 CROSS SECTIONS - BEVERLY ROAD



** DELETED 38, 39, 40, 41, 42*

LIST OF ILLINOIS DOT HIGHWAY STANDARDS

- 000001 - 06 STANDARD SYMBOLS, ABBREVIATIONS, AND PATTERNS
- 420101 - 04 24'(7.2 m) JOINTED PCC PAVEMENT
- 482011 - 03 HMA SHLD. STRIPS/SHLDS. WITH RESURFACING OR WIDENING AND RESURFACING PROJECTS
- 606001 - 04 CONCRETE CURB TYPE B AND COMBINATION CONCRETE CURB AND GUTTER
- 602001 - 02 CATCH BASIN TYPE A
- 602011 - 02 CATCH BASIN TYPE C
- 602016 - 02 CATCH BASIN TYPE D
- 602301 - 03 INLET - TYPE A
- 602401 - 03 MANHOLE TYPE A
- 604091 - 02 FRAME AND GRATE TYPE 24
- 701201 - 04 LANE CLOSURE, 2L, 2W, DAY ONLY, FOR SPEEDS >= 45 MPH
- 701301 - 04 LANE CLOSURE, 2L, 2W, SHORT TIME OPERATIONS
- 701306 - 03 LANE CLOSURE, 2L, 2W, SLOW MOVING OPERATIONS DAY ONLY, FOR SPEEDS > OR = 45 MPH
- 701311 - 03 LANE CLOSURE, 2L, 2W, MOVING OPERATIONS-DAY ONLY
- 701336 - 06 LANE CLOSURE, 2L, 2W, WORK AREAS IN SERIES, FOR SPEEDS > OR = 45 MPH
- 701501 - 06 URBAN LANE CLOSURE, 2L, 2W, UNDIVIDED
- 701606 - 08 URBAN LANE CLOSURE, MULTILANE, 2W WITH MOUNTABLE MEDIAN
- 701701 - 08 URBAN LANE CLOSURE, MULTILANE INTERSECTION
- 701901 - 02 TRAFFIC CONTROL DEVICES
- 720001 - 01 SIGN PANEL MOUNTING DETAILS
- 720006 - 03 SIGN PANEL ERECTION DETAILS
- 728001 - 01 TELESCOPING STEEL SIGN SUPPORT
- 780001 - 03 TYPICAL PAVEMENT MARKINGS
- 814001 - 02 HANDHOLES
- 814006 - 02 DOUBLE HANDHOLES
- 857001 - 01 STANDARD PHASE DESIGNATION DIAGRAMS AND PHASE SEQUENCES
- 862001 - 01 UNINTERRUPTABLE POWER SUPPLY (UPS)
- 886001 - 01 DETECTOR LOOP INSTALLATIONS
- 873001 - 02 TRAFFIC SIGNAL GROUNDING & BONDING
- 877001 - 05 STEEL MAST ARM ASSEMBLY AND POLE 16' THROUGH 55'
- 878001 - 09 CONCRETE FOUNDATION DETAILS
- 701001-02, 701006-03, 701011-02, 701101-02, 701106-02, 701326-04, 701421-04

COMMITMENTS

NO COMMITMENTS FOR THIS PROJECT

GENERAL NOTES

1. BEFORE STARTING ANY EXCAVATION, THE CONTRACTOR SHALL CALL "J.U.L.I.E." AT 800-892-0123 FOR FIELD LOCATIONS OF BURIED ELECTRIC, TELEPHONE, AND GAS FACILITIES. 48 HOUR NOTIFICATION IS REQUIRED.
2. THE CONTRACTOR SHALL COORDINATE CONSTRUCTION ACTIVITIES WITH THE UTILITY COMPANIES, VILLAGES OF HOFFMAN ESTATES AND EAST DUNDEE.
3. THE CONTRACTOR WILL NOT BE ALLOWED TO SET UP A YARD OR FIELD OFFICE ON STATE PROPERTY WITHOUT WRITTEN PERMISSION FROM THE DEPARTMENT.
4. ANY PAVEMENT MARKINGS AND RAISED REFLECTIVE PAVEMENT MARKERS OBLITERATED BY MILLING AND RESURFACING OPERATIONS ON SIDE STREETS AND ENTRANCES SHALL BE REPLACED AND PAID FOR IN KIND.
5. ALL DAMAGE TO EXISTING PAVEMENT MARKING OR RAISED REFLECTIVE PAVEMENT MARKERS OUTSIDE THE REMOVAL LINE SHOWN ON THE PLANS SHALL BE REPLACED AT THE CONTRACTORS EXPENSE. NO ADDITIONAL COST TO THE DEPARTMENT.
6. BEFORE BEGINNING ANY WORK, THE CONTRACTOR SHALL RETAIN AND RECORD FOR FUTURE REFERENCES, ALL EXISTING PAVEMENT MARKING LINES AND RAISED REFLECTIVE PAVEMENT MARKERS IN ORDER THAT THESE LOCATIONS CAN BE RE-ESTABLISHED FOR STRIPING. EXACT LOCATIONS OF ALL STRIPING SHALL BE AS DIRECTED BY THE ENGINEER.
7. ALL PAVEMENT PATCHING LOCATIONS WILL BE DETERMINED IN THE FIELD BY THE ENGINEER.
8. DRAINAGE ADJUSTMENTS OR RECONSTRUCTION LOCATIONS WILL BE DETERMINED IN THE FIELD BY THE ENGINEER.
9. THE CONTRACTOR SHALL BE RESPONSIBLE FOR VERIFYING ALL DIMENSIONS AND CONDITIONS EXISTING IN THE FIELD PRIOR TO CONSTRUCTION AND ORDERING MATERIALS.
10. THE CONTRACTOR SHALL CONTACT THE DISTRICT ONE TRAFFIC CONTROL SUPERVISOR AT (847) 705-4470 A MINIMUM OF 72 HOURS IN ADVANCE OF BEGINNING WORK.
11. THE ENGINEER SHALL CONTACT THE TRAFFIC FIELD TECHNICIAN A MINIMUM OF TWO (2) WEEKS PRIOR TO THE PLACEMENT OF PERMANENT PAVEMENT MARKINGS.
12. THE CONTRACTOR SHALL BE REQUIRED TO PROVIDE ACCESS TO ABUTTING PROPERTY AT ALL TIMES DURING THE CONSTRUCTION OF THIS PROJECT.
13. DO NOT SCALE PLANS FOR CONSTRUCTION DIMENSIONS.
14. DOUBLE LANE MARKERS ARE TO BE USED AS SHOWN ON THE DISTRICT ONE DETAIL "TYPICAL APPLICATIONS - RAISED REFLECTIVE PAVEMENT MARKERS (SNOW-PLOW RESISTANT)" SHOWN ON THE PLANS.
15. WHEN MILLED PAVEMENT IS OPEN TO TRAFFIC THE MAXIMUM GRADE DIFFERENTIAL BETWEEN PASSES OF THE MILLING MACHINE SHALL NOT EXCEED 1/2 INCHES WHERE THE SPEED LIMIT IS 45 MPH OR LESS AND 1 INCH WHERE THE SPEED LIMIT IS GREATER THAN 45 MPH, WITH WRITTEN APPROVAL FROM THE ENGINEER, A MAXIMUM GRADE DIFFERENTIAL OF 3 INCHES MAY BE ALLOWED IF THE EDGE OF THE MILLING IS SLOPED A MINIMUM 1:3 (V:H).
16. BUTT JOINTS WILL BE INSTALLED AT THE ENDS OF ALL RESURFACING (WHERE RESURFACING MEETS EXISTING PAVEMENT), IN ACCORDANCE WITH THE "BUTT JOINT AND HOT-MIX ASPHALT TAPER DETAILS" SHEET INCLUDED IN THE PLANS UNLESS OTHERWISE SPECIFIED.
17. PAVEMENT MARKING TAPE, TYPE III SHALL BE USED FOR SHORT TERM PAVEMENT MARKINGS ON ALL FINAL SURFACES. THE COST OF THE PAVEMENT MARKING TAPE, TYPE III AND IT'S REMOVAL SHALL BE INCLUDED IN THE COST OF SHORT TERM PAVEMENT MARKING.
18. THE CONTRACTOR SHALL PLACE PROPOSED PAVEMENT MARKINGS IN ACCORDANCE WITH DISTRICT 1 TYPICAL PAVEMENT MARKINGS DETAIL (TC-13).
19. FOR WORK OUTSIDE THE LIMITS OF BRIDGE APPROACH PAVEMENT, ALL REFERENCES IN THE HIGHWAY STANDARDS AND STANDARD SPECIFICATIONS FOR REINFORCEMENT, DOWEL BARS AND TIE BARS IN PAVEMENT, SHOULDERS, CURB, GUTTER, COMBINATION CURB & GUTTER AND MEDIAN, AND CHAIR SUPPORTS FOR CRC PAVEMENT, SHALL BE EPOXY COATED, UNLESS NOTED ON THE PLANS.
20. THE GENERAL CONTRACTOR IS REQUIRED TO HIRE AN ENVIRONMENTAL FIRM WITH AT LEAST FIVE (5) DOCUMENTED LEAKING UNDERGROUND STORAGE TANK CLEANUPS OR THAT IS PRE-QUALIFIED IN HAZARDOUS WASTE BY THE DEPARTMENT TO REMEDIATE THE SOIL CONTAMINATION AND MONITOR FOR WORKER PROTECTION.

Rev. 6-4-12

Rev.

FILE NAME = p:\2009\m08086.ver\ver_phi\cadd\W038_IL72_Beverly\Shs\02-DIGP90-ht-gennote.dgn
 PLOT SCALE = 2.0000 / IN.
 USER NAME = Millennia Professional Services



200 22ND Street, Suite 216, Lombard, IL 60148
 630.795.9119 voice, 630.839.2566 fax
 www.mps-ll.com
MILLENNIA PROFESSIONAL SERVICES

DESIGNED - CJD	REVISED -
DRAWN - CJD	REVISED -
CHECKED - TVN	REVISED -
DATE - 4/4/2012	REVISED -

STATE OF ILLINOIS
DEPARTMENT OF TRANSPORTATION

IL 72 - HIGGINS RD
AT BEVERLY RD AND AT ROCK ROAD DR

INDEX OF SHEETS, LIST OF IDOT
HIGHWAY STANDARDS,
GENERAL NOTES & COMMITMENTS

F.A.P. RTE.	SECTION	COUNTY	TOTAL SHEETS	SHEET NO.
341	2011-071-N	COOK/KANE	56	2
FED. ROAD DIST. NO. 1 ILLINOIS FED. AID PROJECT			CONTRACT NO. 60P90	

SCALE: N/A SHEET NO. OF SHEETS STA. TO STA.

p:\2009\m08086.ver\ver_phi\cadd\W038_IL72_Beverly\Shs\02-DIGP90-ht-gennote.dgn

SUMMARY OF QUANTITIES

LS3EL LS3EL LS3EL LS3EL LS3EL 0790L

CONSTRUCTION TYPE CODE

ROADWAY BEVERLY RD	BEVERLY RD TRAFFIC SIGNAL	ROCK RD DR TRAFFIC SIGNAL	INTERCONNECT	BEVERLY RD LIGHTING RELOC. COOK	EMERGENCY VEHICLE PRE-EMPTION (EVP) DEVICE COOK
COOK	COOK	KANE	COOK	COOK	COOK
90% FED 10% STATE	90% FED 6.67% STATE 3.33% VHE	90% FED 6.67% STATE 3.33% VED	90% FED 10% STATE	90% FED 10% STATE	100% VHE
0005	0021 .01	0021 .01	0021 .02	0021 .03	0021 .01

VHE = VILLAGE OF HOFFMAN ESTATES
VED = VILLAGE OF EAST DUNDEE

URBAN

CODE NO.	ITEM DESCRIPTION	UNIT	TOTAL QUANTITY	90% FED 10% STATE	90% FED 6.67% STATE 3.33% VHE	90% FED 6.67% STATE 3.33% VED	90% FED 10% STATE	90% FED 10% STATE	100% VHE
20200100	EARTH EXCAVATION	CU YD	793	793					
20000150	TRENCH BACKFILL	CU YD	12	12					
21101615	TOPSOIL FURNISH AND PLACE, 4"	SO YD	2862	2862					
21400100	GRADING AND SHAPING DITCHES	FOOT	392	392					
25000400	NITROGEN FERTILIZER NUTRIENT	POUND	3.9	3.9					
25000500	PHOSPHORUS FERTILIZER NUTRIENT	POUND	3.9	3.9					
25000600	POTASSIUM FERTILIZER NUTRIENT	POUND	3.9	3.9					
25200110	SODDING, SALT TOLERANT	SO YD	2862	2862					
28000305	TEMPORARY DITCH CHECKS	FOOT	125	125					
28000400	PERIMETER EROSION BARRIER	FOOT	1367	1367					
28000510	INLET FILTERS	EACH	25	25					
30300112	AGGREGATE SUBGRADE IMPROVEMENT 12"	SO YD	1394	1394					
31200502	STABILIZED SUBBASE - HOT-MIX ASPHALT, 4 1/2"	SO YD	438	438					
35501314	HOT-MIX ASPHALT BASE COURSE, 7 1/2"	SO YD	816	816					
40600215	POLYMERIZED BITUMINOUS MATERIALS (PRIME COAT)	TON	2.4	2.4					
40600300	AGGREGATE (PRIME COAT)	TON	12	12					
40600400	MIXTURE FOR CRACKS, JOINTS, AND FLANGEWAYS	TON	9	9					
40600825	POLYMERIZED LEVELING BINDER (MACHINE METHOD), N50	TON	36	36					
40600982	HOT-MIX ASPHALT SURFACE REMOVAL-BUTT JOINT	SO YD	61	61					
40600985	CONCRETE SURFACE REMOVAL-BUTT JOINT	SO YD	429	429					
40603240	POLYMERIZED HOT-MIX ASPHALT BINDER COURSE, 1L-19.0, N90	TON	103	103					
40603595	POLYMERIZED HOT-MIX ASPHALT SURFACE COURSE, MIX "F", N90	TON	676	676					
42000511	PORTLAND CEMENT CONCRETE PAVEMENT 10 1/2" (JOINTED)	SO YD	438	438					
42001300	PROTECTIVE COAT	SO YD	751	751					
42400200	PORTLAND CEMENT CONCRETE SIDEWALK 5 INCH	SO FT	76	-	38	38			
44000100	PAVEMENT REMOVAL	SO YD	29	29					
44000157	HOT-MIX ASPHALT SURFACE REMOVAL, 2"	SO YD	4462	4462					
44000500	COMBINATION CURB AND GUTTER REMOVAL	FOOT	1030	1030					

FILE NAME: p:\2009\vee09086-ver-or phi\cadd\0308-IL72-Beverly\Shs\03-0168P98-ah-500.dgn
 PLOT SCALE: 1"=40'
 USER NAME: Millenia Professional Services

Rev. 6-4-12

SPECIALTY ITEM Rev.



200 225D Street, Suite 216, Lombard, IL 60148
 630.785.8110 voice, 630.839.2566 fax
 www.mps-ill.com
MILLENNIA PROFESSIONAL SERVICES

DESIGNED - CJD	REVISED -
DRAWN - CJD	REVISED -
CHECKED - TVN	REVISED -
DATE - 4/6/2012	REVISED -

**STATE OF ILLINOIS
DEPARTMENT OF TRANSPORTATION**

IL 72 - HIGGINS RD
AT BEVERLY RD AND AT ROCK ROAD DR
 SUMMARY OF QUANTITIES
 SCALE: SHEET NO. OF SHEETS STA. TO STA.

F.A.P. RTE.	SECTION	COUNTY	TOTAL SHEETS	SHEET NO.
341	2011-071-N	COOK/KANE	96	3
CONTRACT NO. 60P90			FED. ROAD DIST. NO. 1 ILLINOIS FED. AID PROJECT	

p:\2009\vee09086-ver-or phi\cadd\0308-IL72-Beverly\Shs\03-0168P98-ah-500.dgn

SUMMARY OF QUANTITIES

CONSTRUCTION TYPE CODE

BEVERLY RD LIGHTING RELOC.
 COOK
 90% FED.
 10% STATE

VHE = VILLAGE OF HOFFMAN ESTATES
 VED = VILLAGE OF EAST DUNDEE

CODE NO.	ITEM DESCRIPTION	UNIT	TOTAL QUANTITY	CONSTRUCTION TYPE CODE					
				ROADWAY BEVERLY RD	BEVERLY RD TRAFFIC SIGNAL	ROCK RD DR TRAFFIC SIGNAL	INTERCONNECT	BEVERLY RD LIGHTING	EMERGENCY VEHICLE PRE-EMPTION (EVP) DEVICE
				COOK	COOK	KANE	COOK	COOK	COOK
				90% FED 10% STATE	90% FED 6.67% STATE 3.33% VHE	90% FED 6.67% STATE 3.33% VED	90% FED 10% STATE	90% FED. 10% STATE	100% VHE
44003100	MEDIAN REMOVAL	SO FT	4460	0005 4460	0021	0021	0021	0021	0021
44004250	PAVED SHOULDER REMOVAL	SO YD	534	534					
44201765	CLASS D PATCHES, TYPE II, 10 INCH	SO YD	120	120					
44213204	TIE BARS 3/4"	EACH	270	270					
44300200	STRIP REFLECTIVE CRACK CONTROL TREATMENT	FOOT	829	829					
48101200	AGGREGATE SHOULDER, TYPE B	TON	78	78					
54390160	INSERTION CULVERT LINER 21"	FOOT	145	145					
60107600	PIPE UNDERDRAINS 4"	FOOT	75	75					
60211800	CATCH BASINS, TYPE D, 4' -DIAMETER, TYPE 1 FRAME, CLOSED LID	EACH	2	2					
60212813	CATCH BASINS, TYPE D, 4' -DIAMETER, TYPE 23 FRAME AND GRATE	EACH	1	1					
60237460	INLETS, TYPE A, TYPE 23 FRAME AND GRATE	EACH	1	1					
60250500	CATCH BASINS TO BE ADJUSTED WITH NEW TYPE 1 FRAME, CLOSED LID	EACH	1	1					
60255500	MANHOLES TO BE ADJUSTED	EACH	1	1					
60500060	REMOVING INLETS	EACH	3	3					
60604400	COMBINATION CONCRETE CURB AND GUTTER, TYPE B-6.18	FOOT	501	501					
60619600	CONCRETE MEDIAN, TYPE SB-6.12	SO FT	1759	1759					
66900200	NON-SPECIAL WASTE DISPOSAL	CU YD	563	563					
66900450	SPECIAL WASTE PLANS AND REPORTS	L SUM	1	1					
66900530	SOIL DISPOSAL ANALYSIS	EACH	2	2					
67000400	ENGINEER'S FIELD OFFICE, TYPE A	CAL MO	6	6					
67100100	MOBILIZATION	L SUM	1	1					
70102635	TRAFFIC CONTROL AND PROTECTION, STANDARD 701701	L SUM	1			1			
70300100	SHORT-TERM PAVEMENT MARKING	FOOT	365	365					
70300210	TEMPORARY PAVEMENT MARKING - LETTERS AND SYMBOLS	SO FT	219	219					

FILE NAME : p:\2009\me9086.var\var_phi\lead\W038_IL72.Beverly\Shs\03-0168P90-ahc-500.dgn
 USER : JIN
 DATE : 4/16/2012

MILLENNIA PROFESSIONAL SERVICES
 200 22ND Street, Suite 216, Lombard, IL 60148
 630.705.0110 voice, 630.839.2566 fax
 www.mps-ill.com

DESIGNED - CJD	REVISED -
DRAWN - CJD	REVISED -
CHECKED - TVN	REVISED -
DATE - 4/16/2012	REVISED -

**STATE OF ILLINOIS
 DEPARTMENT OF TRANSPORTATION**

**IL 72 - HIGGINS RD
 AT BEVERLY RD AND AT ROCK ROAD DR**

F.A.P. RTE. 341	SECTION 2011-071-N	COUNTY COOK/KANE	TOTAL SHEETS 96	SHEET NO. 4
CONTRACT NO. 60P90			FED. ROAD DIST. NO. 1 ILLINOIS FED. AID PROJECT	

Rev. 6-4-12 • SPECIALTY ITEM

SUMMARY OF QUANTITIES

CONSTRUCTION TYPE CODE

CODE NO.	ITEM DESCRIPTION	UNIT	TOTAL QUANTITY	CONSTRUCTION TYPE CODE					
				ROADWAY BEVERLY RD	BEVERLY RD TRAFFIC SIGNAL	ROCK RD DR TRAFFIC SIGNAL	INTERCONNECT	BEVERLY RD LIGHTING RELOC.	EMERGENCY VEHICLE PRE-EMPTION (EVP) DEVICE
				COOK	COOK	KANE	COOK	COOK	COOK
				90% FED 10% STATE	90% FED 6.67% STATE 3.33% VHE	90% FED 6.67% STATE 3.33% VED	90% FED 10% STATE	90% FED 10% STATE	100% VHE
				0005	0021	0021	0021	0021	0021
70300220	TEMPORARY PAVEMENT MARKING - LINE 4"	FOOT	4018	4018					
70300240	TEMPORARY PAVEMENT MARKING - LINE 6"	FOOT	1410	1410					
70300260	TEMPORARY PAVEMENT MARKING - LINE 12"	FOOT	665	665					
70300280	TEMPORARY PAVEMENT MARKING - LINE 24"	FOOT	128	128					
70301000	WORK ZONE PAVEMENT MARKING REMOVAL	SO FT	61	61					
72000100	SIGN PANEL - TYPE 1	SO FT	49	29	20				
72800100	TELESCOPING STEEL SIGN SUPPORT	FOOT	41	41					
78000100	THERMOPLASTIC PAVEMENT MARKING - LETTERS AND SYMBOLS	SO FT	328	328					
78000200	THERMOPLASTIC PAVEMENT MARKING - LINE 4"	FOOT	4018	4018					
78000400	THERMOPLASTIC PAVEMENT MARKING - LINE 6"	FOOT	1477	1477					
78000600	THERMOPLASTIC PAVEMENT MARKING - LINE 12"	FOOT	665	665					
78000650	THERMOPLASTIC PAVEMENT MARKING - LINE 24"	FOOT	128	128					
78008200	POLYUREA PAVEMENT MARKING TYPE I - LETTERS AND SYMBOLS	SO FT	37	37					
78008210	POLYUREA PAVEMENT MARKING TYPE I - LINE 4"	FOOT	400	400					
78008230	POLYUREA PAVEMENT MARKING TYPE I - LINE 6"	FOOT	400	400					
78008270	POLYUREA PAVEMENT MARKING TYPE I - LINE 24"	FOOT	36	36					
78100100	RAISED REFLECTIVE PAVEMENT MARKER	EACH	86	86					
78300100	PAVEMENT MARKING REMOVAL	SO FT	2263	2263					
78300200	RAISED REFLECTIVE PAVEMENT MARKER REMOVAL	EACH	25	25					
80400100	ELECTRIC SERVICE INSTALLATION	EACH	1						
80400200	ELECTRIC UTILITY SERVICE CONNECTION	SUM	1						
80500020	SERVICE INSTALLATION - POLE MOUNTED	EACH	1		1				
81028200	UNDERGROUND CONDUIT, GALVANIZED STEEL, 2" DIA.	FOOT	40		40				
81028220	UNDERGROUND CONDUIT, GALVANIZED STEEL, 3" DIA.	FOOT	145		145				
81028240	UNDERGROUND CONDUIT, GALVANIZED STEEL, 4" DIA.	FOOT	158		158				
81400100	HANDHOLE	EACH	2		2				
81400200	HEAVY-DUTY HANDHOLE	EACH	1		1				
81603040	UNIT DUCT, 600V, 2-1C NO. 6, 1/C NO. 8 GROUND, (XLP-TYPE USE), 1" DIA	FOOT	385					385	

VHE = VILLAGE OF HOFFMAN ESTATES
VED = VILLAGE OF EAST DUNDEE

BEVERLY RD LIGHTING RELOC.
COOK
90% FED. 10% STATE

URBAN

POLYETHYLENE

Rev. 6-4-12

SPECIALTY ITEM

FILE NAME = p:\2009\m090806.vor\var phil\cadd\W038.IL72.Beverly\Shets\83-0168P98-sht-500.dgn
 PLOT SCALE = 2:0000 / 1"=100'
 USER NAME = phil
 MILLENIA PROFESSIONAL SERVICES



200 22ND Street, Suite 216, Lombard, IL 60148
 630.705.8110 voice, 630.839.2566 fax
 www.mps-ll.com
MILLENNIA PROFESSIONAL SERVICES

DESIGNED - CJD	REVISED -
DRAWN - CJD	REVISED -
CHECKED - TVN	REVISED -
DATE - 4/6/2012	REVISED -

STATE OF ILLINOIS
DEPARTMENT OF TRANSPORTATION

IL 72 - HIGGINS RD
AT BEVERLY RD AND AT ROCK ROAD DR
SCALE: SHEET NO. OF SHEETS STA. TO STA.

F.A.P. RTE. 341	SECTION 2011-071-N	COUNTY COOK/KANE	TOTAL SHEETS 56	SHEET NO. 5
CONTRACT NO. 60P90			FED. ROAD DIST. NO. 1 ILLINOIS FED. AID PROJECT	

p:\2009\m090806.vor\var phil\cadd\W038.IL72.Beverly\Shets\83-0168P98-sht-500.dgn

SUMMARY OF QUANTITIES

CONSTRUCTION TYPE CODE

CODE NO.	ITEM DESCRIPTION	UNIT	TOTAL QUANTITY	CONSTRUCTION TYPE CODE					
				ROADWAY BEVERLY RD	BEVERLY RD TRAFFIC SIGNAL	ROCK RD DR TRAFFIC SIGNAL	INTERCONNECT	BEVERLY RD LIGHTING	EMERGENCY VEHICLE PRE-EMPTION (EVP) DEVICE
				COOK	COOK	KANE	COOK	COOK	COOK
				90% FED 10% STATE	90% FED 6.67% STATE 3.33% VHE	90% FED 6.67% STATE 3.33% VED	90% FED 10% STATE	90% FED 10% STATE	100% VHE
				0005	0021	0021	0021	0021	0021
81603050	UNIT DUCT, 600V, 3 1/2 NO. 6, 1/2 NO. 8 GROUND, (XLP TYPE USE), 1" DIA	FOOT	2550					2550	
82102400	LUMINAIRE, SODIUM VAPOR, HORIZONTAL MOUNT, 400 WATT	EACH	12					12	
82500330	LIGHTING CONTROLLER, PEDESTAL MOUNTED, 240VOLT, 60AMP	EACH	1					1	
83050810	LIGHT POLE, ALUMINUM, 47.5 FT. M.H., 15 FT. MAST ARM	EACH	12					12	
83600200	LIGHT POLE FOUNDATION, 24" DIAMETER	FOOT	108					108	
83800205	BREAKAWAY DEVICE, TRANSFORMER BASE, 15 INCH BOLT CIRCLE	EACH	12					12	
84200804	REMOVAL OF POLE FOUNDATION	EACH	3					3	
84400105	RELOCATE EXISTING LIGHTING UNIT	EACH	3					3	
84400405	RELOCATE EXISTING WOOD POLES	EACH	1						
86400100	TRANSCEIVER - FIBER OPTIC	EACH	1		1				
87301215	ELECTRIC CABLE IN CONDUIT, SIGNAL, NO. 14 2C	FOOT	3034		3034				
87301225	ELECTRIC CABLE IN CONDUIT, SIGNAL, NO. 14 3C	FOOT	1587		1587				
87301245	ELECTRIC CABLE IN CONDUIT, SIGNAL, NO. 14 5C	FOOT	5112		5112				
87301255	ELECTRIC CABLE IN CONDUIT, SIGNAL, NO. 14 7C	FOOT	529		529				
87301305	ELECTRIC CABLE IN CONDUIT, LEAD-IN, NO. 14 1 PAIR	FOOT	4851		4851				
87301805	ELECTRIC CABLE IN CONDUIT, SERVICE, NO. 6 2 C	FOOT	96		96				
87502440	TRAFFIC SIGNAL POST, GALVANIZED STEEL 10 FT.	EACH	1		1				
87502480	TRAFFIC SIGNAL POST, GALVANIZED STEEL 14 FT.	EACH	1		1				
87700180	STEEL MAST ARM ASSEMBLY AND POLE, 28 FT.	EACH	1		1				
87700200	STEEL MAST ARM ASSEMBLY AND POLE, 32 FT.	EACH	1		1				
87700210	STEEL MAST ARM ASSEMBLY AND POLE, 34 FT.	EACH	1		1				
87700260	STEEL MAST ARM ASSEMBLY AND POLE, 44 FT.	EACH	1		1				
87800100	CONCRETE FOUNDATION, TYPE A	FOOT	8		8				
87800150	CONCRETE FOUNDATION, TYPE C	FOOT	4		4				
87800400	CONCRETE FOUNDATION, TYPE E 30-INCH DIAMETER	FOOT	10		10				
87800415	CONCRETE FOUNDATION, TYPE E 36-INCH DIAMETER	FOOT	35		35				
88030020	SIGNAL HEAD, LED, 1-FACE, 3-SECTION, MAST-ARM MOUNTED	EACH	12		8	4			
88030050	SIGNAL HEAD, LED, 1-FACE, 3-SECTION, BRACKET MOUNTED	EACH	5		2	3			
88030100	SIGNAL HEAD, LED, 1-FACE, 5-SECTION, BRACKET MOUNTED	EACH	1		-	1			

VHE = VILLAGE OF HOFFMAN ESTATES
VED = VILLAGE OF EAST DUNDEE

BEVERLY RD LIGHTING RELOC.
90% FED. 10% STATE

POLYETHYLENE

URBAN

Rev. 6-4-12

SPECIALTY ITEM

FILE NAME: p:\2809\m\09086...
PLOT SCALE: 1" = 2000'
DATE: 4/6/2012

MILLENNIA PROFESSIONAL SERVICES
200 22ND Street, Suite 216, Lombard, IL 60148
630.705.0110 voice, 630.839.2566 fax
www.mps-ll.com

DESIGNED - CJD	REVISED -
DRAWN - CJD	REVISED -
CHECKED - TWN	REVISED -
DATE - 4/6/2012	REVISED -

STATE OF ILLINOIS
DEPARTMENT OF TRANSPORTATION

IL 72 - HIGGINS RD
AT BEVERLY RD AND AT ROCK ROAD DR

SCALE: SHEET NO. OF SHEETS STA. TO STA.

F.A.P. RTE. 341	SECTION 2011-071-N	COUNTY COOK/KANE	TOTAL SHEETS 56	SHEET NO. 6
CONTRACT NO. 60P90				

p:\2809\m\09086...
p:\2809\m\09086...
p:\2809\m\09086...

SUMMARY OF QUANTITIES

CONSTRUCTION TYPE CODE

CODE NO.	ITEM DESCRIPTION	UNIT	TOTAL QUANTITY	CONSTRUCTION TYPE CODE					
				ROADWAY BEVERLY RD	BEVERLY RD TRAFFIC SIGNAL	ROCK RD DR TRAFFIC SIGNAL	INTERCONNECT	BEVERLY RD LIGHTING RELOC.	EMERGENCY VEHICLE PRE-EMPTION (EVP) DEVICE
				COOK	COOK	KANE	COOK	COOK	COOK
				90% FED 10% STATE	90% FED 6.67% STATE 3.33% VHE	90% FED 6.67% STATE 3.33% VED	90% FED 10% STATE	90% FED 10% STATE	100% VHE
				0005	0021	0021	0021	0021	0021
88030110	SIGNAL HEAD, LED, 1-FACE, 5-SECTION, MAST-ARM MOUNTED	EACH	2		2				
88030210	SIGNAL HEAD, LED, 2-FACE, 3-SECTION, BRACKET MOUNTED	EACH	1			1			
88030240	SIGNAL HEAD, LED, 2-FACE, 1-3-SECTION, 1-5 SECTION, BRACKET MOUNTED	EACH	1			1			
88030310	SIGNAL HEAD, LED, 3-FACE, 3-SECTION, BRACKET MOUNTED	EACH	1		1				
88102717	PEDESTRIAN SIGNAL HEAD, LED, 1-FACE, BRACKET MOUNTED WITH COUNTDOWN TIMER	EACH	2		2				
88200210	TRAFFIC SIGNAL BACKPLATE, LOUVERED, ALUMINUM	EACH	14		10	4			
88500100	INDUCTIVE LOOP DETECTOR	EACH	8		8				
88600100	DETECTOR LOOP, TYPE 1	FOOT	496		496				
88600700	PREFORMED DETECTOR LOOP	FOOT	129		129				
88700200	LIGHT DETECTOR	EACH	3						3
88700300	LIGHT DETECTOR AMPLIFIER	EACH	3						3
88800100	PEDESTRIAN PUSH-BUTTON	EACH	2		2				
89000100	TEMPORARY TRAFFIC SIGNAL INSTALLATION	EACH	1		1				
89502300	REMOVE ELECTRIC CABLE FROM CONDUIT	FOOT	2144				2144		
89502375	REMOVE EXISTING TRAFFIC SIGNAL EQUIPMENT	EACH	1		1				
89502380	REMOVE EXISTING HANDHOLE	EACH	2		2				
89502385	REMOVE EXISTING CONCRETE FOUNDATION	EACH	5		5				
Z0033028	MAINTENANCE OF LIGHTING SYSTEM	CAL MO	4						
X0324085	EMERGENCY VEHICLE PRIORITY SYSTEM LINE SENSOR CABLE, NO. 20 3/C	FOOT	1170						1170
X5537800	STORM SEWERS TO BE CLEANED 12"	FOOT	132	132					
X7010216	TRAFFIC CONTROL AND PROTECTION, (SPECIAL)	L SUM	1	1					
X8360110	LIGHT POLE FOUNDATION, SPECIAL	FOOT	27					27	
X8570226	FULL-ACTUATED CONTROLLER AND TYPE IV CABINET, SPECIAL	EACH	1		1				
X8620200	UNINTERRUPTABLE POWER SUPPLY, SPECIAL	EACH	2		1	1			
X8710024	FIBER OPTIC CABLE IN CONDUIT, NO. 62.5/125, MM12F SM24F	FOOT	2144				2144		
X8950305	REMOVE EXISTING SIGNAL HEAD	EACH	12			12			
Z0018500	DRAINAGE STRUCTURES TO BE CLEANED	EACH	11	11					
Z0030850	TEMPORARY INFORMATION SIGNING	SO FT	78	78					

VHE = VILLAGE OF HOFFMAN ESTATES
VED = VILLAGE OF EAST DUNDEE

BEVERLY RD LIGHTING RELOC.
90% FED. 10% STATE

URBAN

Δ Non-participating (100% state)

• SPECIALTY ITEM Δ Rev. 6-4-12

FILE NAME : p:\2009\m090806\revor.phu\cedd\W038.IL72.Beverly\Shets\03-0168P98-ant-S00.dgn
 PLOT SCALE : 2.0000 / IN.
 USER NAME : Millenna Professional Services



200 22ND Street, Suite 216, Lombard, IL 60148
 630.705.9110 voice, 630.839.2566 fax
 www.mps-ll.com
MILLENNIA PROFESSIONAL SERVICES

DESIGNED - CJD	REVISED -
DRAWN - CJD	REVISED -
CHECKED - TVN	REVISED -
DATE - 4/6/2012	REVISED -

STATE OF ILLINOIS
DEPARTMENT OF TRANSPORTATION

IL 72 - HIGGINS RD
AT BEVERLY RD AND AT ROCK ROAD DR
 SCALE: SHEET NO. OF SHEETS STA. TO STA.

F.A.P. RTE. 341	SECTION 2011-071-N	COUNTY COOK/KANE	TOTAL SHEETS 56	SHEET NO. 7
CONTRACT NO. 60P90			FED. ROAD DIST. NO. 1 [ILLINOIS] FED. AID PROJECT	

p:\2009\m090806\revor.phu\cedd\W038.IL72.Beverly\Shets\03-0168P98-ant-S00.dgn

SUMMARY OF QUANTITIES

URBAN

CONSTRUCTION TYPE CODE


CODE NO.	ITEM DESCRIPTION	UNIT	TOTAL QUANTITY	ROADWAY	BEVERLY RD TRAFFIC SIGNAL	ROCK RD DR TRAFFIC SIGNAL	INTERCONNECT	BEVERLY RD LIGHTING RELOC.	EMERGENCY VEHICLE PRE-EMPTION (EVP) DEVICE
				BEVERLY RD	COOK	COOK	KANE	COOK	COOK
				90% FED 10% STATE	90% FED 6.67% STATE 3.33% VHE	90% FED 6.67% STATE 3.33% VED	90% FED 10% STATE	90% FED 10% STATE	100% VHE
				0005	0021	0021	0021	0021	0021
* Z0033020	LUMINAIRE SAFETY CABLE ASSEMBLY	EACH	12						
* Z0033046	RE-OPTIMIZE TRAFFIC SIGNAL SYSTEM LEVEL 2	EACH	2		1		1		
* Z0073510	TEMPORARY TRAFFIC SIGNAL TIMING	EACH	1		1				
* 87301900	ELECTRIC CABLE IN CONDUIT, GROUNDING, NO. 6 1C EQUIPMENT CONDUCTOR	FOOT	567		567				

BEVERLY RD LIGHTING RELOC.
90% FED.
10% STATE

VHE = VILLAGE OF HOFFMAN ESTATES
VED = VILLAGE OF EAST DUNDEE

FILE NAME : p:\2009\m89806.var\var.ph\Acadd\038_IL72_Beverly\Shs\03-DIGP98-sht-500.dgn
PLOT SCALE : 2.0000 / 1" = 100'-0"
USER NAME : Millennium Professional Services

* SPECIALTY ITEM Rev. 6-4-12



200 22ND Street, Suite 216, Lombard, IL 60148
630.795.9110 voice, 630.839.2566 fax
www.mps-ll.com

MILLENNIA PROFESSIONAL SERVICES

DESIGNED - CJD	REVISED -
DRAWN - CJD	REVISED -
CHECKED - TVN	REVISED -
DATE - 4/6/2012	REVISED -

**STATE OF ILLINOIS
DEPARTMENT OF TRANSPORTATION**

**IL 72 - HIGGINS RD
AT BEVERLY RD AND AT ROCK ROAD DR**

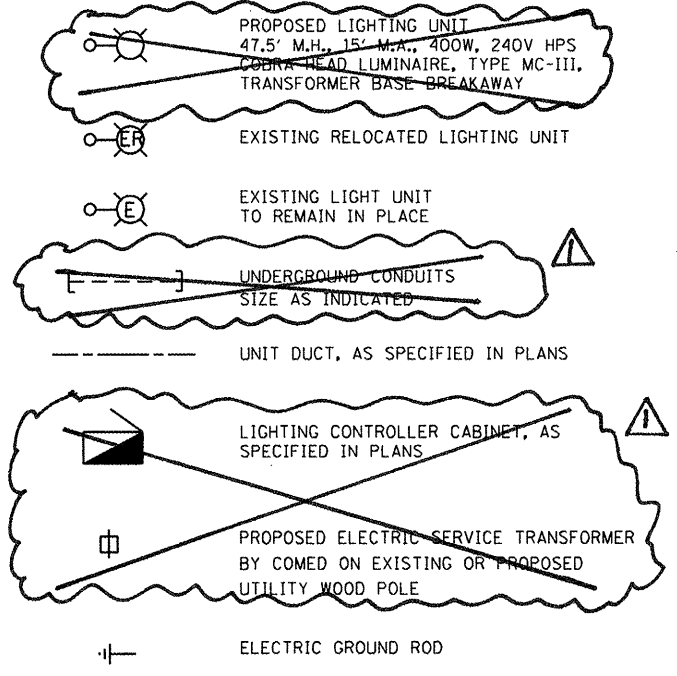
SCALE: SHEET NO. OF SHEETS STA. TO STA.

F.A.P. RTE. 341	SECTION 2011-071-N	COUNTY COOK/KANE	TOTAL SHEETS 56	SHEET NO. 8
FED. ROAD DIST. NO. 1 ILLINOIS FED. AID PROJECT			CONTRACT NO. 60P90	

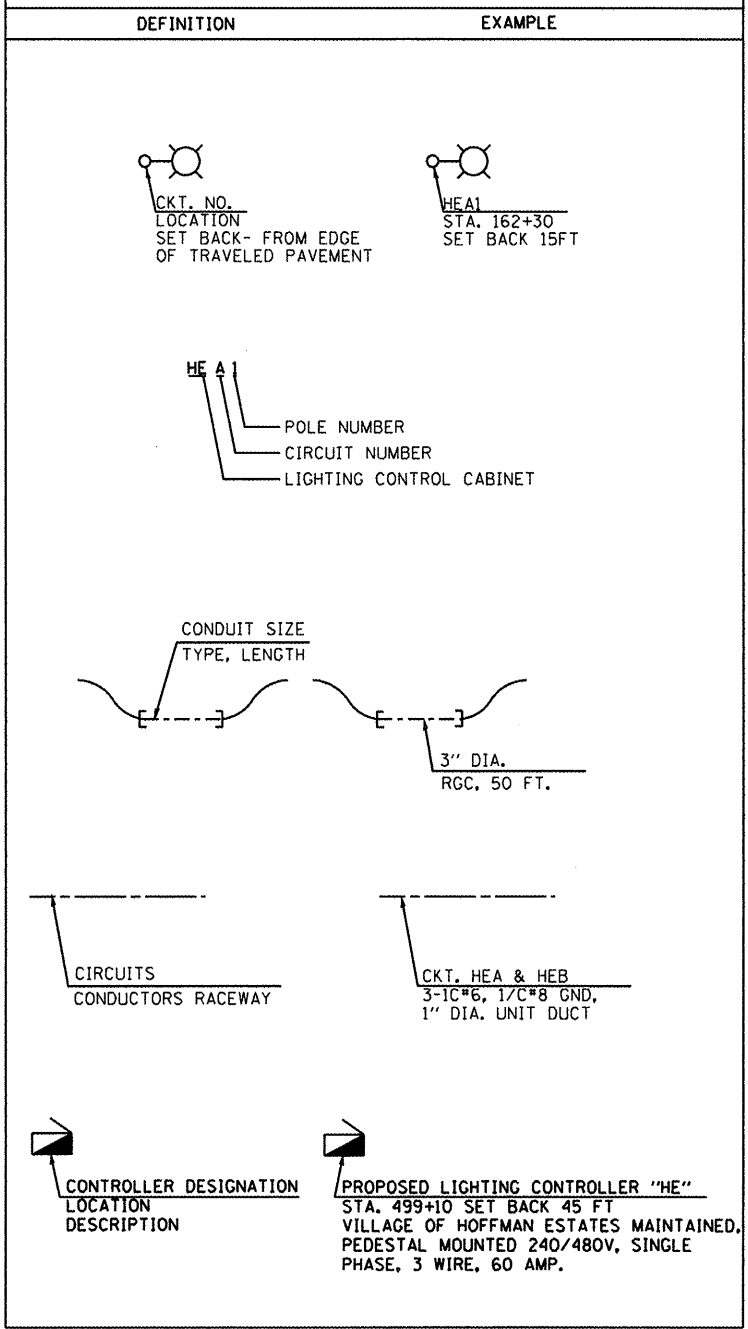
p:\2009\m89806.var\var.ph\Acadd\038_IL72_Beverly\Shs\03-DIGP98-sht-500.dgn

I:\PROJECTS\Projects\2011\Illinois\Various\IL 72 at Beverly Rd\16698- Lighting.Ldgn
 FILE NAME = I:\PROJECTS\Projects\2011\Illinois\Various\IL 72 at Beverly Rd\16698- Lighting.Ldgn
 PLOT SCALE = AS CALLED
 USER NAME = USER

LEGEND



CALL-OUT SAMPLES

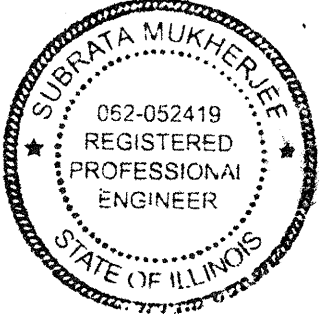


ABBREVIATIONS

SYMBOL	DESCRIPTION
AC	ALTERNATING CURRENT
A/C	AERIAL CABLE
AFG	ABOVE FINISHED GRADE
CB	CIRCUIT BREAKER
CKT	CIRCUIT
CM	CENTIMETER
CNC	COILABLE NONMETALLIC CONDUIT
CT	CURRENT TRANSFORMER
CP	CONTROL PANEL
DA	DAVIT ARM
DC	DIRECT CURRENT
DIA	DIAMETER
DP	DISTRIBUTION PANEL
E	EXISTING UNIT TO REMAIN
ECA	ELECTRIC CABLE ASSEMBLY
EM	EXISTING UNIT TO BE MODIFIED (e.g. NEW LUMINAIRE, BALLAST OR MAST ARM)
ER	EXISTING RELOCATED UNIT
ET	EXISTING TEMPORARY UNIT TO REMAIN
ETR	EXISTING TEMPORARY RELOCATED UNIT
FT	FEET OR FOOT
FND BW	FOUNDATION BARRIER WALL
FND BW OS	FOUNDATION BARRIER WALL OFFSET
FND CON	FOUNDATION CONCRETE
FND CON OS	FOUNDATION CONCRETE OFFSET
FND MET	FOUNDATION METAL
FND PW	FOUNDATION PARAPET WALL
FU	FUSE
GND	GROUND
HID	HIGH INTENSITY DISCHARGE
JB	JUNCTION BOX
KVA	KILOVOLT-AMPERE
KW	KILOWATTS
M	METER
MA	MAST ARM
MM	MILLIMETER
MH	MOUNTING HEIGHT
NO.	NUMBER
P	PROPOSED
PB	PUSH BUTTON
PNL	PANEL
PVCC RGC	PVC COATED RIGID GALVANIZED CONDUIT
PT	POTENTIAL TRANSFORMER
R	EXISTING UNIT TO BE REMOVED (OWNER SALVAGED U.N.O.)
RR	EXISTING UNIT TO BE REMOVED AND REINSTALLED
RECP	RECEPTACLE
RGC	RIGID GALVANIZED CONDUIT
RGS	RIGID GALVANIZED STEEL
SEL SW	SELECTOR SWITCH
SPARE	SPARE
SPACE	SPACE
SS	STAINLESS STEEL
STA	STATION
T	TEMPORARY LIGHTING UNIT
TB	TRANSFORMER BASE
TMP	TEMPORARY
TR	TEMPORARY UNIT TO BE REMOVED, SALVAGE EQUIPMENT AS SPECIFIED
TRR	TEMPORARY UNIT TO BE REMOVED AND RELOCATED
TUR	TEMPORARY UNIT ON UTILITY POLE TO BE REMOVED
UD	UNIT DUCT
U.N.O.	UNLESS NOTED OTHERWISE
WP	WOOD POLE
XFMR	TRANSFORMER

GENERAL NOTES:

- THE ELECTRICAL WORK SHALL BE PERFORMED IN ACCORDANCE WITH THE IDOT STANDARD SPECIFICATIONS FOR ROAD AND BRIDGE CONSTRUCTION AND ASSOCIATED SUPPLEMENTAL SPECIFICATIONS AND RECURRING SPECIAL PROVISIONS (LATEST EDITION).
- BREAKAWAY DEVICE, TRANSFORMER BASE, 9", SHALL BE INSTALLED ON ALL GROUND MOUNTED POLES WITH 15" BUILT CIRCLE ON 24" DIA. FOUNDATION AS SHOWN IN THE PLANS.**
- SET BACK DISTANCES FOR LIGHT POLES ARE MEASURED FROM THE EDGE OF PAVEMENT TO THE CENTER OF POLE.
- CONTRACTOR SHALL FIELD VERIFY UTILITY LOCATIONS AND PROPERLY MAINTAIN AND PROTECT ALL KNOWN ABOVE GROUND AND UNDERGROUND UTILITIES FROM DAMAGE OR SERVICE INTERRUPTION. CONTACT J.U.L.I.E. AT 1-800-892-0123 48 HOURS BEFORE ANY EXCAVATION WORK TO ENSURE ALL EXISTING UTILITIES ARE IDENTIFIED AND ASSISTANCE IS OBTAINED WITH WORK RELATED TO ACCURATELY LOCATING UNDERGROUND UTILITIES. ANY DAMAGE TO EXISTING UTILITIES WILL BE REPLACED WITH NEW AT CONTRACTORS COST.



Subrata Mukherjee
 SUBRATA MUKHERJEE, P.E.
 NO. 062-052419
 EXPIRES: 11/30/2013
 SHEETS 34-38

4-4-2012

GANDHI AND ASSOCIATES, INC.
 ENGINEERS AND PLANNERS
 6035 N. NORTHWEST HIGHWAY
 SUITE 306
 CHICAGO, ILLINOIS 60631 TEL. (773) 774-5910

DESIGNED	SM	REVISED	
DRAWN	SM	REVISED	
CHECKED	PKG/MA	REVISED	
DATE	4/4/2012	REVISED	

STATE OF ILLINOIS
DEPARTMENT OF TRANSPORTATION

IL 72 - HIGGINS RD
AT BEVERLY RD AND AT ROCK ROAD DR

LIGHTING LEGEND AND
GENERAL NOTES

F.A.P. RTE.	SECTION	COUNTY	TOTAL SHEETS	SHEET NO.
341	2011-071-N	COOK/KANE	56	34
FED. ROAD DIST. NO. 1 (ILLINOIS) FED. AID PROJECT			CONTRACT NO. 60P90	

SCALE: SHEET NO. OF SHEETS STA. TO STA.

I:\PROJECTS\Projects\2011\Illinois\Various\IL 72 at Beverly Rd\16698- Lighting.Ldgn

SCHEDULE OF QUANTITIES

	DESIGNATION	UNIT	TOTAL QUANTITY
▲	ELECTRIC SERVICE INSTALLATION	EACH	1
	ELECTRIC UTILITY SERVICE CONNECTION	L-SUM	1
	UNDERGROUND CONDUIT, GALVANIZED STEEL, 3" DIA.	FOOT	222
	UNIT DUCT, 600V, 2-1C NO.6, 1/C NO.8 GROUND, (XLP-TYPE USE), 1" DIA. POLYETHYLENE	FOOT	385
▲	UNIT DUCT, 600V, 3-1C NO.6, 1/C NO.8 GROUND, (XLP-TYPE USE), 1" DIA. POLYETHYLENE	FOOT	2700
	LUMINAIRE, SODIUM VAPOR, HORIZONTAL MOUNT, 400 WATT	EACH	12
	LIGHTING CONTROLLER, PEDESTAL MOUNTED, 240VOLT, 60AMP	EACH	1
	LIGHT POLE, ALUMINUM, 47.5 FT. M.H., 15 FT. MAST ARM	EACH	12
	LIGHT POLE FOUNDATION, 24" DIAMETER	FOOT	108
	BREAKAWAY DEVICE, TRANSFORMER BASE, 15 INCH BOLT CIRCLE	EACH	12
	REMOVAL OF POLE FOUNDATION	EACH	3
	RELOCATE EXISTING LIGHTING UNIT	EACH	3
	* MAINTENANCE OF LIGHTING SYSTEM	CAL MO	4
	* LIGHT POLE FOUNDATION, SPECIAL	FOOT	27
▲	* LUMINAIRE SAFETY CABLE ASSEMBLY	EACH	12

* DESIGNATES SPECIAL PROVISIONS

FILE NAME = I:\projects\projects 2011\millema\various\ill rte 72 at beverly rd\0168P90-Lighting 2.dgn
 PLOT SCALE = AS SCALE
 USER NAME =



GANDHI AND ASSOCIATES, INC.
 ENGINEERS AND PLANNERS
 6035 N. NORTHWEST HIGHWAY
 SUITE 305
 CHICAGO, ILLINOIS 60631 TEL. (773) 774-590

DESIGNED - SM	REVISED - ▲ 05/24/12- ADDENDUM
DRAWN - SM	REVISED -
CHECKED - PKG/MA	REVISED -
DATE - 5/24/2012	REVISED -

STATE OF ILLINOIS
DEPARTMENT OF TRANSPORTATION

IL 72 - HIGGINS RD
AT BEVERLY RD AND AT ROCK ROAD DR

SCHEDULE OF QUANTITIES

SCALE: SHEET NO. OF SHEETS STA. TO STA.

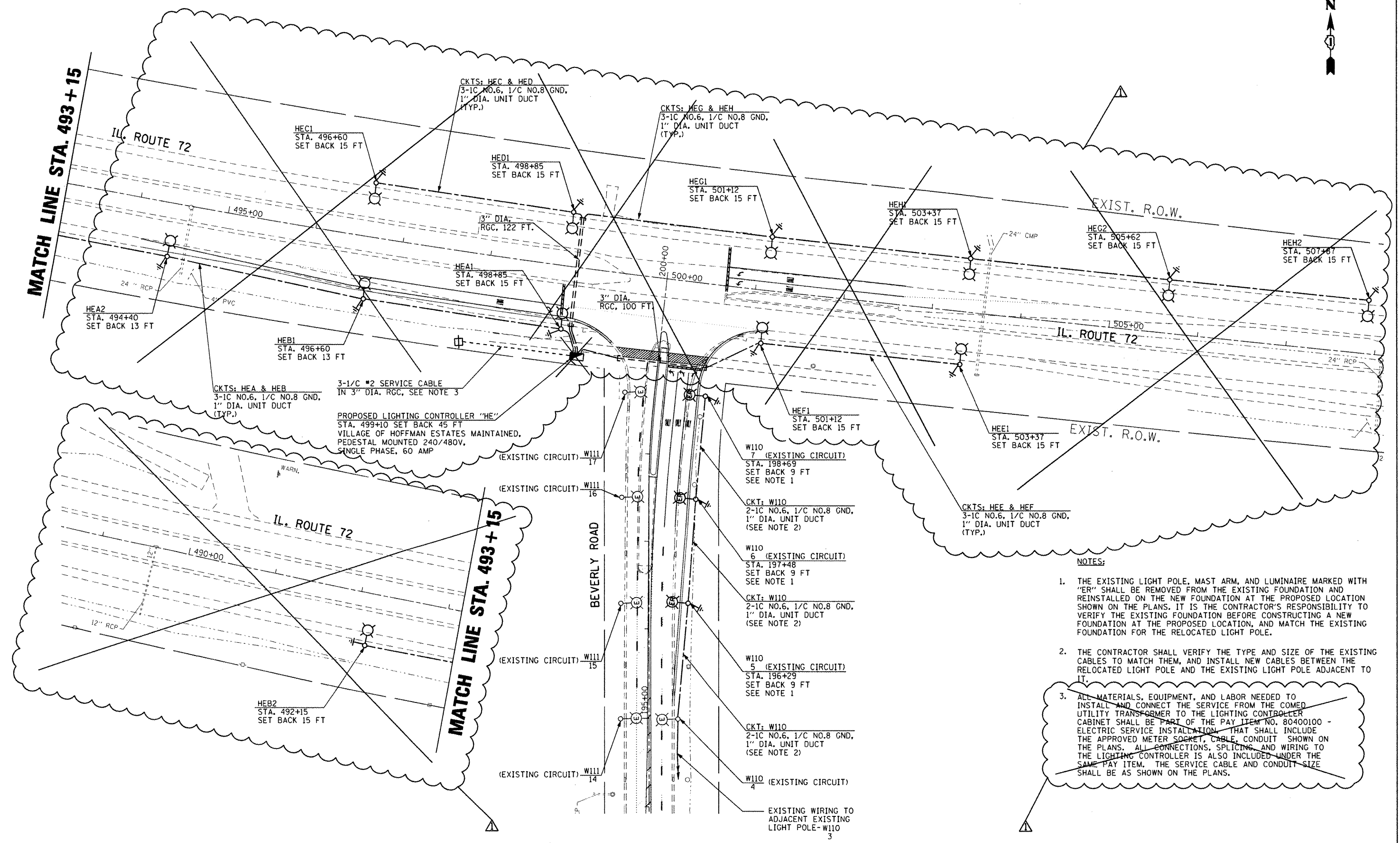
F.A.P. RTE.	SECTION	COUNTY	TOTAL SHEETS	SHEET NO.
341	2011-071-N	COOK/KANE	56	35
FED. ROAD DIST. NO. 1 (ILLINOIS) FED. AID PROJECT			CONTRACT NO. 60P90	

I:\projects\projects 2011\millema\various\ill rte 72 at beverly rd\0168P90-Lighting 2.dgn



MATCH LINE STA. 493+15

MATCH LINE STA. 493+15



CKTS: HEA & HEB
3-1/C NO.6, 1/C NO.8 GND,
1" DIA. UNIT DUCT
(TYP.)

3-1/C #2 SERVICE CABLE
IN 3" DIA. RCC, SEE NOTE 3

PROPOSED LIGHTING CONTROLLER "HE"
STA. 499+10 SET BACK 45 FT
VILLAGE OF HOFFMAN ESTATES MAINTAINED,
PEDESTAL MOUNTED 240/480V,
SINGLE PHASE, 60 AMP

NOTES:

1. THE EXISTING LIGHT POLE, MAST ARM, AND LUMINAIRE MARKED WITH "ER" SHALL BE REMOVED FROM THE EXISTING FOUNDATION AND REINSTALLED ON THE NEW FOUNDATION AT THE PROPOSED LOCATION SHOWN ON THE PLANS. IT IS THE CONTRACTOR'S RESPONSIBILITY TO VERIFY THE EXISTING FOUNDATION BEFORE CONSTRUCTING A NEW FOUNDATION AT THE PROPOSED LOCATION, AND MATCH THE EXISTING FOUNDATION FOR THE RELOCATED LIGHT POLE.
2. THE CONTRACTOR SHALL VERIFY THE TYPE AND SIZE OF THE EXISTING CABLES TO MATCH THEM, AND INSTALL NEW CABLES BETWEEN THE RELOCATED LIGHT POLE AND THE EXISTING LIGHT POLE ADJACENT TO IT.
3. ALL MATERIALS, EQUIPMENT, AND LABOR NEEDED TO INSTALL AND CONNECT THE SERVICE FROM THE COMED UTILITY TRANSFORMER TO THE LIGHTING CONTROLLER CABINET SHALL BE PART OF THE PAY ITEM NO. 80400100 - ELECTRIC SERVICE INSTALLATION THAT SHALL INCLUDE THE APPROVED METER SOCKET, CABLE, CONDUIT SHOWN ON THE PLANS. ALL CONNECTIONS, SPLICING, AND WIRING TO THE LIGHTING CONTROLLER IS ALSO INCLUDED UNDER THE SAME PAY ITEM. THE SERVICE CABLE AND CONDUIT SIZE SHALL BE AS SHOWN ON THE PLANS.

K:\PROJECTS\Projects 2011\Illinois\Various\ILL Rte 72 at Beverly Rd\0168P90-Lighting 3.dgn
FILE NAME: K:\PROJECTS\Projects 2011\Illinois\Various\ILL Rte 72 at Beverly Rd\0168P90-Lighting 3.dgn
PLOT SCALE: 1"=50'
USER NAME: RUSSELL

GO GANDHI AND ASSOCIATES, INC.
ENGINEERS AND PLANNERS
6035 N. NORTHWEST HIGHWAY
SUITE 306
CHICAGO, ILLINOIS 60631 TEL: (773) 774-5900

DESIGNED - SM	REVISED - 05/24/12 - ADDENDUM
DRAWN - SM	REVISED -
CHECKED - PKG/MA	REVISED -
DATE - 5/24/2012	REVISED -

**STATE OF ILLINOIS
DEPARTMENT OF TRANSPORTATION**

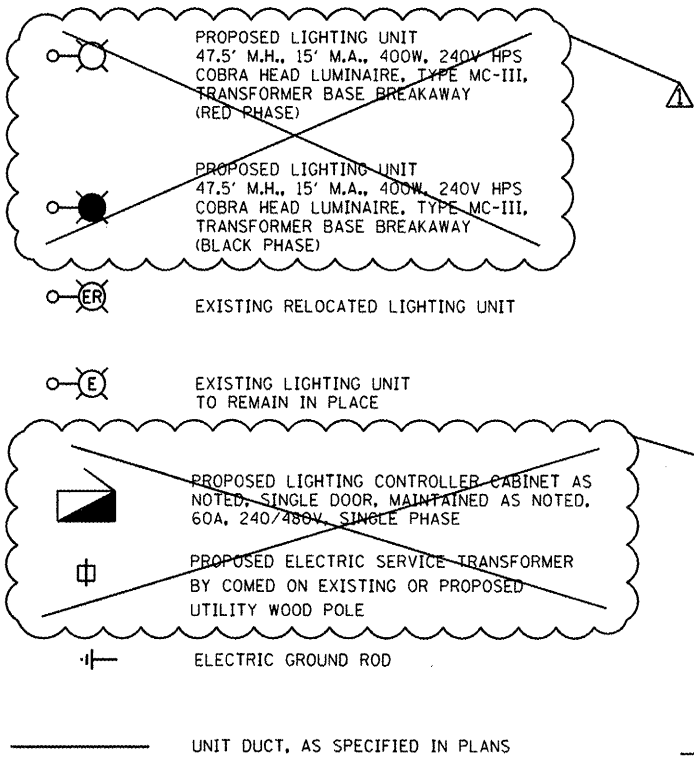
**IL 72 - HIGGINS RD
AT BEVERLY RD AND AT ROCK ROAD DR**

PROPOSED LIGHTING PLAN

SCALE: 1"=50' SHEET NO. OF SHEETS STA. TO STA.

F.A.P. RTE. 341	SECTION 2011-071-N	COUNTY COOK/KANE	TOTAL SHEETS 56	SHEET NO. 36
CONTRACT NO. 60P90			FED. ROAD DIST. NO. 1 ILLINOIS FED. AID PROJECT	

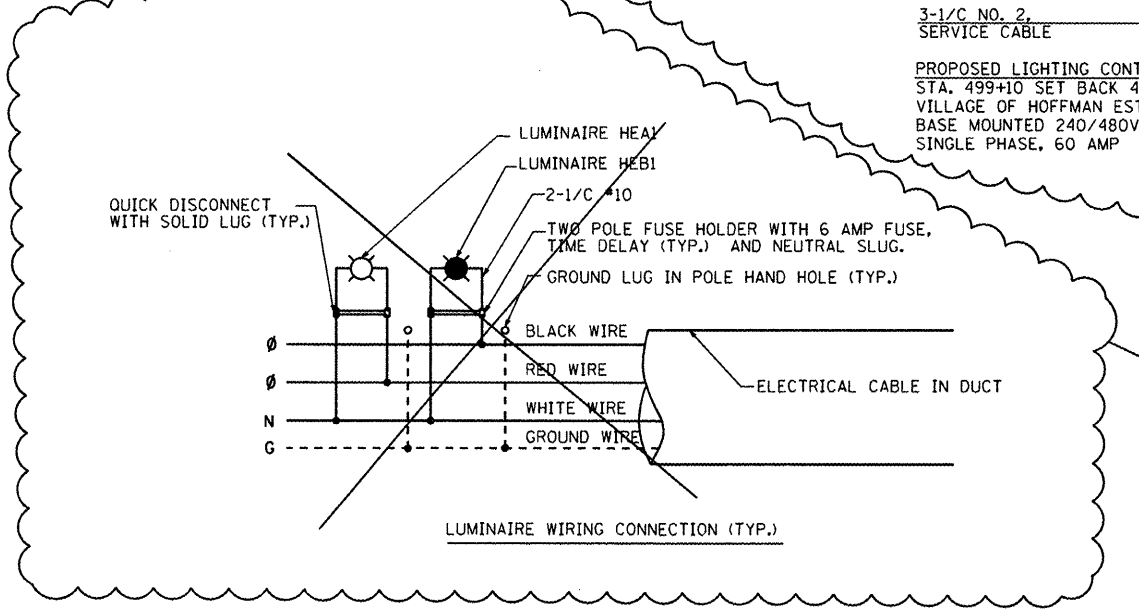
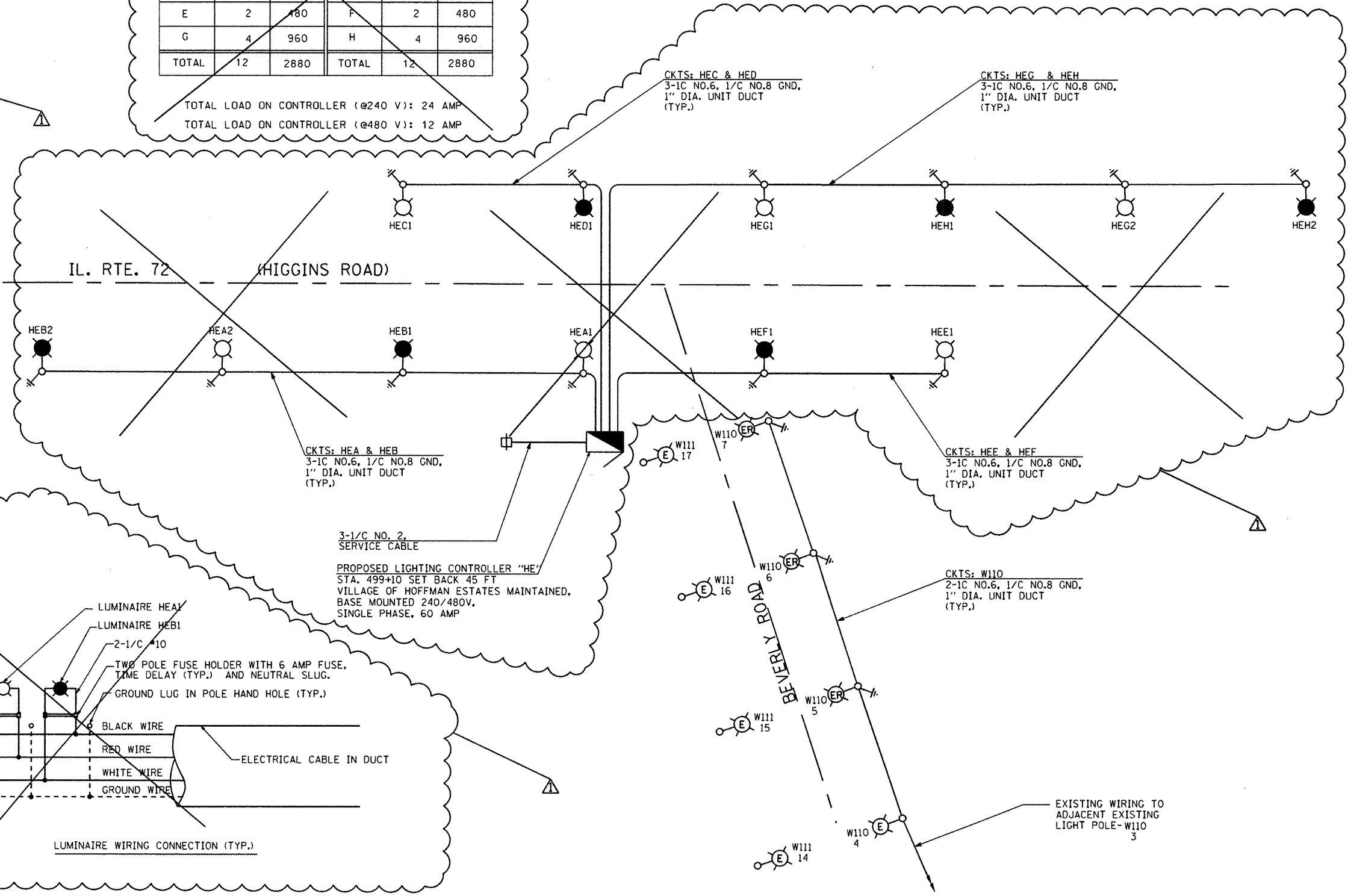
LEGEND



LOAD TABLE
PROPOSED LIGHTING CONTROLLER "HE"
(@ 240 VOLTS)

CIRCUIT	RED PHASE		CIRCUIT	BLACK PHASE	
	AMPS	WATTS		AMPS	WATTS
A	4	960	B	4	960
C	2	480	D	2	480
E	2	480	F	2	480
G	4	960	H	4	960
TOTAL	12	2880	TOTAL	12	2880

TOTAL LOAD ON CONTROLLER (@240 V): 24 AMP
TOTAL LOAD ON CONTROLLER (@480 V): 12 AMP



k:\projects\projects 2011\illinois\various\ill rte 72 at beverly rd\060909-Lighting 4.dgn
 FILE NAME :
 USER NAME :
 \$USER\$

GO GANDHI AND ASSOCIATES, INC.
ENGINEERS AND PLANNERS
6035 N. NORTHWEST HIGHWAY
SUITE 306
CHICAGO, ILLINOIS 60631 TEL: (773) 774-5900

DESIGNED - SM	REVISED - 05/24/12- ADDENDUM
DRAWN - SM	REVISED -
CHECKED - PKG/MA	REVISED -
DATE - 5/24/2012	REVISED -

**STATE OF ILLINOIS
DEPARTMENT OF TRANSPORTATION**

**IL 72 - HIGGINS RD
AT BEVERLY RD AND AT ROCK ROAD DR**

PROPOSED SINGLE LINE DIAGRAM

SCALE: SHEET NO. OF SHEETS STA. TO STA.

F.A.P. RTE.	SECTION	COUNTY	TOTAL SHEETS	SHEET NO.
341	2011-071-N	COOK/KANE	56	37
FED. ROAD DIST. NO. 1 ILLINOIS FED. AID PROJECT			CONTRACT NO. 60P90	

k:\projects\projects 2011\illinois\various\ill rte 72 at beverly rd\060909-Lighting 4.dgn