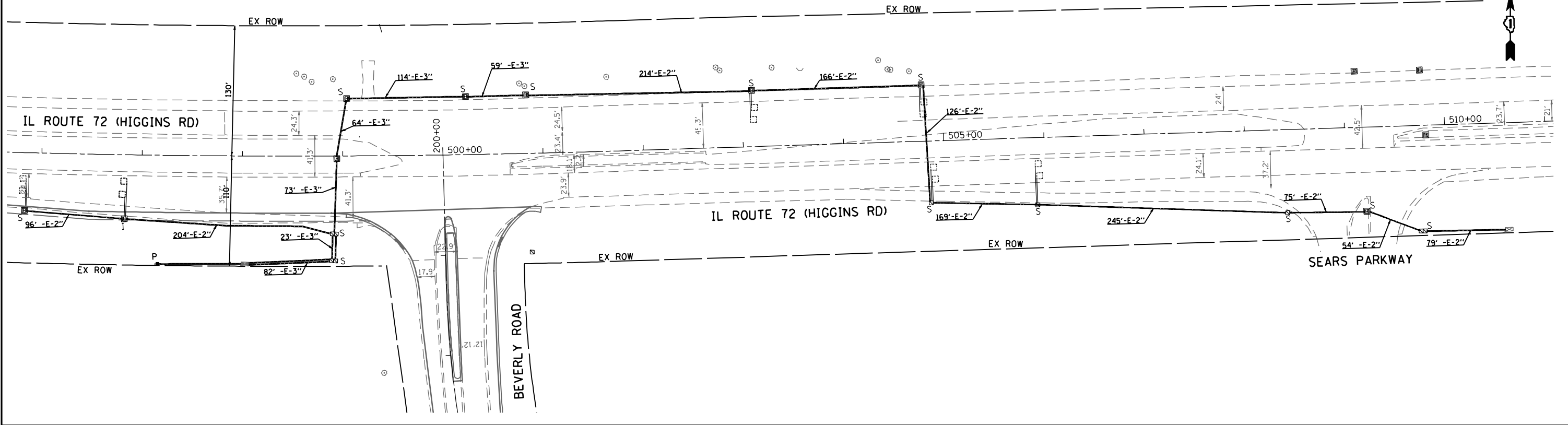


THE TRAFFIC SIGNAL CONTROL EQUIPMENT FOR THIS TEMPORARY SIGNAL SHALL BE "ECONOLITE" TO MATCH THE EXISTING ADJACENT SYSTEM.



FILE NAME : p:\2009\me09006-ver-var-phi\cadd\038-IL72-Beverly\Shvs\DI60P90-sht-08INTC01-Inter-c.dgn
 USER : ME09006
 MILLENNIA PROFESSIONAL SERVICES



200 22ND Street, Suite 216, Lombard, IL 60148
 630.705.0110 voice, 630.839.3566 fax
 www.mps-il.com
MILLENNIA PROFESSIONAL SERVICES

DESIGNED	- CJD	REVISED	-
DRAWN	- CJD	REVISED	-
CHECKED	- TVN	REVISED	-
DATE	- 4/5/2012	REVISED	-

**STATE OF ILLINOIS
 DEPARTMENT OF TRANSPORTATION**

**IL ROUTE 72 AT BEVERLY ROAD
 TRAFFIC SIGNAL INTERCONNECT PLAN**

SCALE: 1"=50' SHEET NO. OF SHEETS STA. TO STA.

F.A.P. RTE.	SECTION	COUNTY	TOTAL SHEETS	SHEET NO.
341	2011-071-N	COOK/KANE	56	32
FED. ROAD DIST. NO. 1 ILLINOIS FED. AID PROJECT			CONTRACT NO. 60P90	

INTC-11

p:\2009\me09006-ver-var-phi\cadd\038-IL72-Beverly\Shvs\DI60P90-sht-08INTC01-Inter-c.dgn