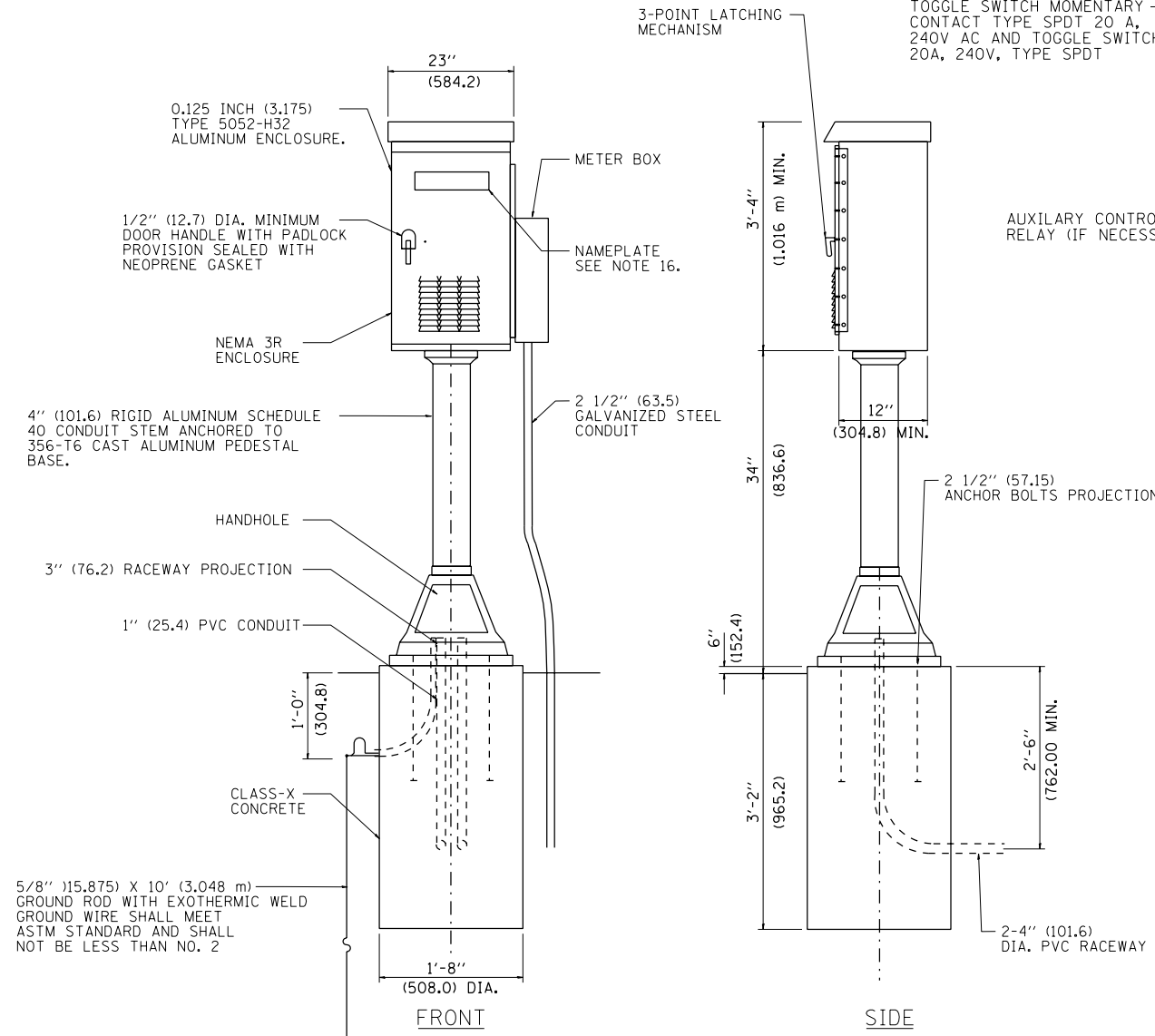
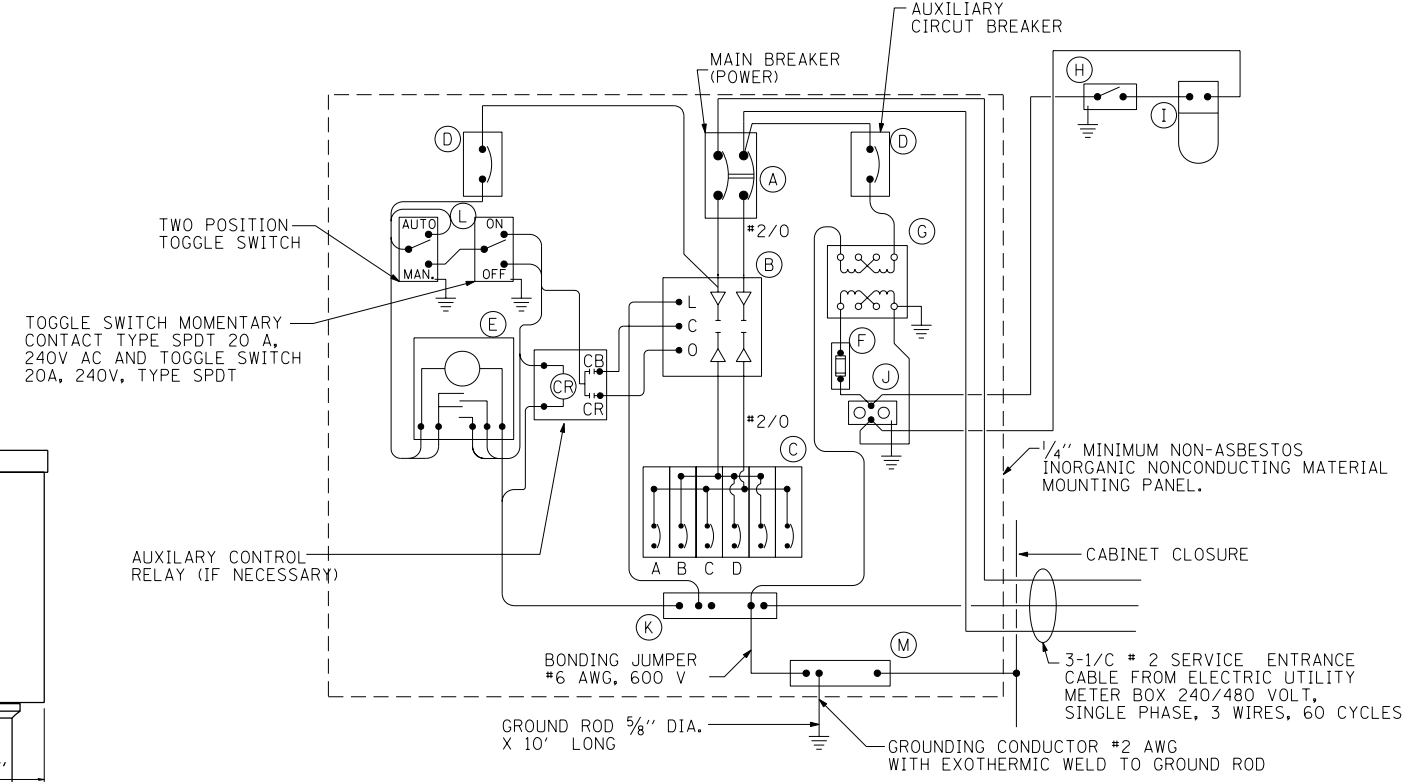
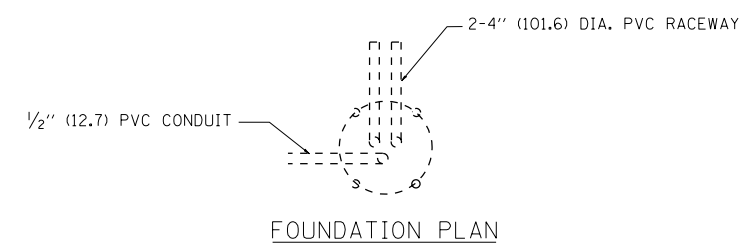


k:\projects\projects 2011\millennia...various\ill rte 72 at beverly rd\0160P90-Lighting 5.dgn
 FILE NAME =
 USER NAME =
 USER NAME =



CONTROL CABINET



PANEL WIRING DIAGRAM

PANEL EQUIPMENT

BILL OF MATERIAL		
ITEM	QUANTITY	DESCRIPTION
A	1	MAIN CIRCUIT BREAKER, 2 POLE, 600 VOLT 100 AMP. FRAME, 60 AMP. NON-INTERCHANGEABLE TRIP INTERRUPTING RATING NEMA-22000 AMP. AT 480 VOLT.
B	1	REMOTE CONTROL SWITCH, ELECTRICALLY OPERATED, MECHANICALLY HELD, 2 POLE, SINGLE THROW, 60 AMP., 600 VOLTS CONTROL CIRCUIT 240 VOLT.
C	6	CIRCUIT BREAKERS, 1 POLE, 100 AMP. FRAME, 30 AMP. NON-INTERCHANGEABLE TRIP INTERRUPTING RATING NEMA-10,000 AMP. AT 240 V.
D	2	CONTROL CIRCUIT - CIRCUIT BREAKER, 1 POLE, 240 V., 100 AMP. FRAME, 15 AMP. NON-INTERCHANGEABLE TRIP INTERRUPTING RATING NEMA-5000 AMP. AT 240 V.
E	1	ASTRONOMIC MICROPROCESSOR-BASED 2-CHANNEL CONTROLLER [TIME SWITCH].
F	1	20 A., 120 V. FUSE.
G	1	1.5 KVA, SINGLE PHASE, ENCAPSULATED TRANSFORMER 240 X 480 / 120 X 240 VOLT, 60Hz.
H	1	SPST 20A SWITCH ON DOOR, TO TURN LIGHT ON WHEN DOOR IS OPEN
I	1	INCANDESCENT LIGHTING FIXTURE ENCLOSED AND GASKETED WITH 60 WATT, 120 V. LAMP.
J	1	20 A., 120 V. DUPLEX RECEPTACLE, GFCI.
K	1	COPPER GROUND BUS 1/4" X 1" X 12" LONG MOUNTED ON PANEL WITH LUGS AND 4 SPARE LUGS
L	1	TOGGLE SWITCHES MOUNTED IN 4" X 4" BOX.
M	1	COPPER GROUND BUS 1/4" X 1" X 12" LONG MOUNTED ON PANEL WITH LUGS AND SPARE LUGS

NOTES:

- ALL DIMENSIONS ARE IN INCHES (MILLIMETERS) UNLESS OTHERWISE SHOWN.
- UNLESS OTHERWISE INDICATED, THE CABINET SHALL BE MOUNTED ATOP A 4-INCH (101.6 mm) RIGID ALUMINUM SCHEDULE 40 CONDUIT STEM ANCHORED TO A CAST ALUMINUM PEDESTAL BASE.
- IN FRONT OF CONTROL CABINET DOOR, REMOVE VEGETATION AND 2" (50.8 mm) TOP SOIL. LEVEL THE AREA AND ON TOP PLACE LENGTH WISE PARALLEL TO CONTROL CABINET. A CONCRETE PAD 36" (914.4 mm) X 60" (1828.8 mm) X 4" (101 mm) MINIMUM SIZE. THE COST OF LABOR AND MATERIALS ARE INCLUDED IN THE COST OF THE CONTROLLER.
- DOOR SHALL BE CONSTRUCTED FROM THE SAME TYPE OF MATERIAL AND THICKNESS AS CABINET.
- DOOR SHALL BE EQUIPPED WITH THREE POINT LATCHING MECHANISM WITH NYLON ROLLERS AT TOP AND BOTTOM.
- DOOR HINGE SHALL BE A HEAVY GAUGE CONTINUOUS HINGE WITH A 1/4" DIA. STAINLESS STEEL HINGE PIN.
- ALL EXTERNAL HARDWARE SHALL BE STAINLESS STEEL
- CONTROL WIRING TO BE #12 AWG, 600V, TYPE "SIS" GRAY SWITCH BOARD WIRE, STRANDED COPPER.
- METER BOX SHALL BE MOUNTED ON THE SIDE OF CONTROL CABINET NEAREST TO THE SERVICE POLE.
- CONTRACTOR TO COORDINATE WITH VILLAGE AUTHORITIES AND PRIME /PAINT LIGHTING CONTROLLER PER VILLAGE REQUIREMENTS
- THE HEADS OF CONNECTORS SCREWS SHALL BE PAINTED WHITE FOR NEUTRAL BAR CONNECTION AND GREEN FOR GROUND BAR CONNECTORS.
- ALL WIRING WITHIN THE CABINET SHALL BE COLOR CODED AS INDICATED:
R= RED BL= BLUE W= WHITE
B= BLACK Y= YELLOW G= GREEN
- PROVIDE SEALING GROMMETS FOR ALL OPEN WIRING EXTENDED FROM DEVICES IN BOXES OR CABINETS WITHIN THE CONTROL CABINET.
- ALL WIRING SHALL BE NEATLY DRESSED AND SUPPORTED.
- THE CONTROLLER SHALL BE CONSTRUCTED TO U.L. STD. 508 AND BEAR THE U.L. LABEL "ENCLOSED INDUSTRIAL CONTROL PANEL".
- 12" (304.8 mm) X 16" (406.4 mm) STAINLESS STEEL EXTERIOR NAMEPLATE SHALL BE ENGRAVED TO "VILLAGE OF HOFFMAN ESTATES LIGHTING CONTROLS" UNLESS OTHERWISE SPECIFIED.

GO GANDHI AND ASSOCIATES, INC.
 ENGINEERS AND PLANNERS
 6035 N. NORTHWEST HIGHWAY
 SUITE 306
 CHICAGO, ILLINOIS 60631 TEL.(773)774-5910

DESIGNED - SM	REVISED -
DRAWN - SM	REVISED -
CHECKED - PKG/MA	REVISED -
DATE - 4/30/2012	REVISED -

**STATE OF ILLINOIS
 DEPARTMENT OF TRANSPORTATION**

**IL 72 - HIGGINS RD
 AT BEVERLY RD AND AT ROCK ROAD DR**

**LIGHTING CONTROLLER
 PEDESTAL MOUNT**

F.A.P. RTE.	SECTION	COUNTY	TOTAL SHEETS	SHEET NO.
341	2011-071-N	COOK/KANE	56	38
CONTRACT NO. 60P90				

SCALE: SHEET NO. OF SHEETS STA. TO STA.

NONE

k:\projects\projects 2011\millennia...various\ill rte 72 at beverly rd\0160P90-Lighting 5.dgn