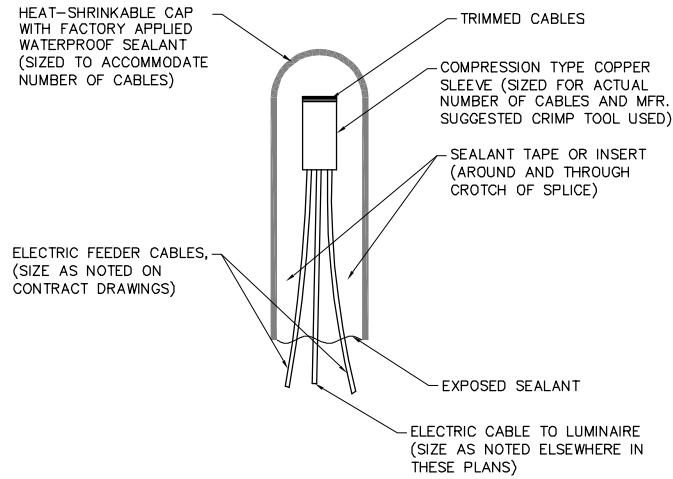


NOTES:

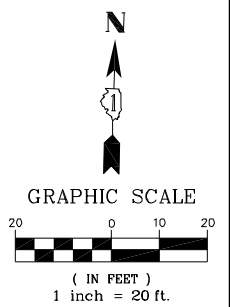
- REFER TO THE TRAFFIC SIGNAL PLAN FOR THE LOCATION OF COMBINATION POLES.
- THE CONTRACTOR SHALL VERIFY CONNECTIVITY OF THE EXISTING LIGHTS ALONG GROSS POINT ROAD AND CHURCH STREET PRIOR TO BEGINNING CONSTRUCTION.
- STREET LIGHTING WORK SHALL BE STAGED TO PREVENT AN OVERNIGHT LAPSE IN LIGHTING.
- TO SPLICE THE CONDUIT, THE CONTRACTOR SHALL LOCATE AND INTERCEPT THE COUPLING OF THE EXISTING 2" CONDUIT AND SPLICE A NEW 2" GALVANIZED STEEL CONDUIT TO RE-CONNECT THE EXISTING STREET LIGHTING SYSTEM. THE WORK SHALL BE INCLUDED IN THE COST OF THE CONDUIT.
- WHERE THE CONDUIT IS TO BE SPLICED, THE EXISTING CABLE SHALL BE REMOVED TO THE NEAREST JUNCTION POINT AND A NEW CONTINUOUS SPAN OF CABLE SHALL BE INSTALLED.
- UNDERGROUND SPLICING OF PHASE AND NEUTRAL CABLES SHALL NOT BE PERMITTED. THESE CABLE SPLICES SHALL OCCUR ONLY IN ABOVE GROUND JUNCTION BOXES OR POLE HANDHOLES.
- FOR THE PROPOSED LIGHTING CONTROLLER 'XO', CIRCUIT 'A' SHALL USE CABLE COLOR RED-RED AND CIRCUIT 'B' SHALL USE CABLE COLOR BLACK-BLACK.
- THE GROUND WIRE SHALL BE SPLICED AND BONDED TO EACH HANDHOLE'S COVER AND FRAME.
- ALL EXISTING STREET LIGHTS ARE ON CIRCUIT 'A' IN THE EXISTING VILLAGE OF SKOKIE LIGHTING CONTROLLER 'C1'.
- THE EXISTING STREET LIGHTING IS A SINGLE PHASE, 240/480V, 3 WIRE, AC SYSTEM.
- THE EXISTING VILLAGE OF SKOKIE LIGHTING CONTROLLER 'C1' IS LOCATED AT THE SOUTHEAST CORNER OF U.S. ROUTE 41 (SKOKIE BOULEVARD) AT GROSS POINT ROAD.



**SPLICING ELECTRICAL CABLES
BASIC MATERIALS AND METHODS**

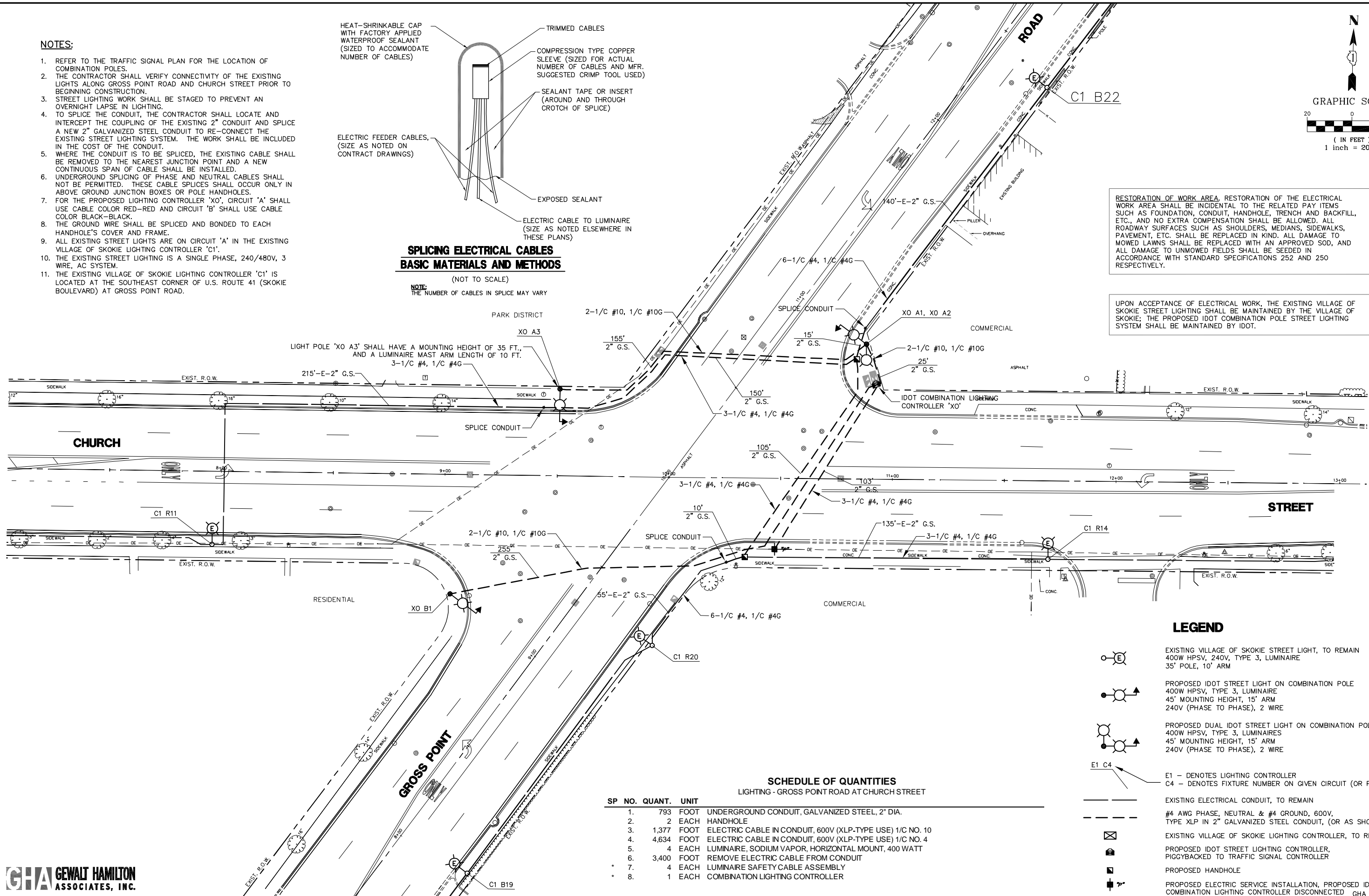
(NOT TO SCALE)

NOTE:
THE NUMBER OF CABLES IN SPLICE MAY VARY



RESTORATION OF WORK AREA, RESTORATION OF THE ELECTRICAL WORK AREA SHALL BE INCIDENTAL TO THE RELATED PAY ITEMS SUCH AS FOUNDATION, CONDUIT, HANDHOLE, TRENCH AND BACKFILL, ETC., AND NO EXTRA COMPENSATION SHALL BE ALLOWED. ALL ROADWAY SURFACES SUCH AS SHOULDERS, MEDIANS, SIDEWALKS, PAVEMENT, ETC. SHALL BE REPLACED IN KIND. ALL DAMAGE TO MOWED LAWNS SHALL BE REPLACED WITH AN APPROVED SOD, AND ALL DAMAGE TO UNMOWED FIELDS SHALL BE SEEDED IN ACCORDANCE WITH STANDARD SPECIFICATIONS 252 AND 250 RESPECTIVELY.

UPON ACCEPTANCE OF ELECTRICAL WORK, THE EXISTING VILLAGE OF SKOKIE STREET LIGHTING SHALL BE MAINTAINED BY THE VILLAGE OF SKOKIE; THE PROPOSED IDOT COMBINATION POLE STREET LIGHTING SYSTEM SHALL BE MAINTAINED BY IDOT.



SCHEDULE OF QUANTITIES
LIGHTING - GROSS POINT ROAD AT CHURCH STREET

SP NO.	QUANT.	UNIT
1.	793	FOOT UNDERGROUND CONDUIT, GALVANIZED STEEL, 2" DIA.
2.	2	EACH HANDHOLE
3.	1,377	FOOT ELECTRIC CABLE IN CONDUIT, 600V (XLP-TYPE USE) 1/C NO. 10
4.	4,634	FOOT ELECTRIC CABLE IN CONDUIT, 600V (XLP-TYPE USE) 1/C NO. 4
5.	4	EACH LUMINAIRE, SODIUM VAPOR, HORIZONTAL MOUNT, 400 WATT
6.	3,400	FOOT REMOVE ELECTRIC CABLE FROM CONDUIT
7.	4	EACH LUMINAIRE SAFETY CABLE ASSEMBLY
8.	1	EACH COMBINATION LIGHTING CONTROLLER

- LEGEND**
- EXISTING VILLAGE OF SKOKIE STREET LIGHT, TO REMAIN
400W HPSV, 240V, TYPE 3, LUMINAIRE
35' POLE, 10' ARM
 - PROPOSED IDOT STREET LIGHT ON COMBINATION POLE
400W HPSV, TYPE 3, LUMINAIRE
45' MOUNTING HEIGHT, 15' ARM
240V (PHASE TO PHASE), 2 WIRE
 - PROPOSED DUAL IDOT STREET LIGHT ON COMBINATION POLE
400W HPSV, TYPE 3, LUMINAIRES
45' MOUNTING HEIGHT, 15' ARM
240V (PHASE TO PHASE), 2 WIRE
 - E1 - DENOTES LIGHTING CONTROLLER
C4 - DENOTES FIXTURE NUMBER ON GIVEN CIRCUIT (OR PHASE)
 - EXISTING ELECTRICAL CONDUIT, TO REMAIN
 - #4 AWG PHASE, NEUTRAL & #4 GROUND, 600V,
TYPE XLP IN 2" GALVANIZED STEEL CONDUIT, (OR AS SHOWN)
 - EXISTING VILLAGE OF SKOKIE LIGHTING CONTROLLER, TO REMAIN
 - PROPOSED IDOT STREET LIGHTING CONTROLLER,
PIGGYBACKED TO TRAFFIC SIGNAL CONTROLLER
 - PROPOSED HANDHOLE
 - PROPOSED ELECTRIC SERVICE INSTALLATION, PROPOSED IDOT
COMBINATION LIGHTING CONTROLLER DISCONNECTED

**GHA GEWALT HAMILTON
ASSOCIATES, INC.**

FILE NAME = 4085.877-EL1.dwg
USER NAME = ZACH WALLSTEN
PLOT SCALE = 1" = .0833'
PLOT DATE = 3/22/2012

DESIGNED - JRD
DRAWN - JZ
CHECKED - AJP
DATE - 3/22/2012

REVISED -
REVISED -
REVISED -
REVISED -

**STATE OF ILLINOIS
DEPARTMENT OF TRANSPORTATION**

**INTERSECTION LIGHTING PLAN
GROSS POINT ROAD AT CHURCH STREET**

SCALE: 1"=20' SHEET NO. OF SHEETS STA. TO STA.

FAP. RTE.	SECTION	COUNTY	TOTAL SHEETS	SHEET NO.
VARIABLES	2011-209-TS	COOK	52	26
CONTRACT #:			60R47	

ILLINOIS FED. AID PROJECT