

**STATE OF ILLINOIS  
DEPARTMENT OF TRANSPORTATION  
DIVISION OF HIGHWAYS**

**PROPOSED  
HIGHWAY PLANS**

**F.A.U. ROUTE 1313 (CHURCH ST.)  
GROSS POINT RD. TO DODGE AVE.  
SECTION (99B&0808)RS-1  
RESURFACING (3P)  
COOK COUNTY  
C-91-273-12**

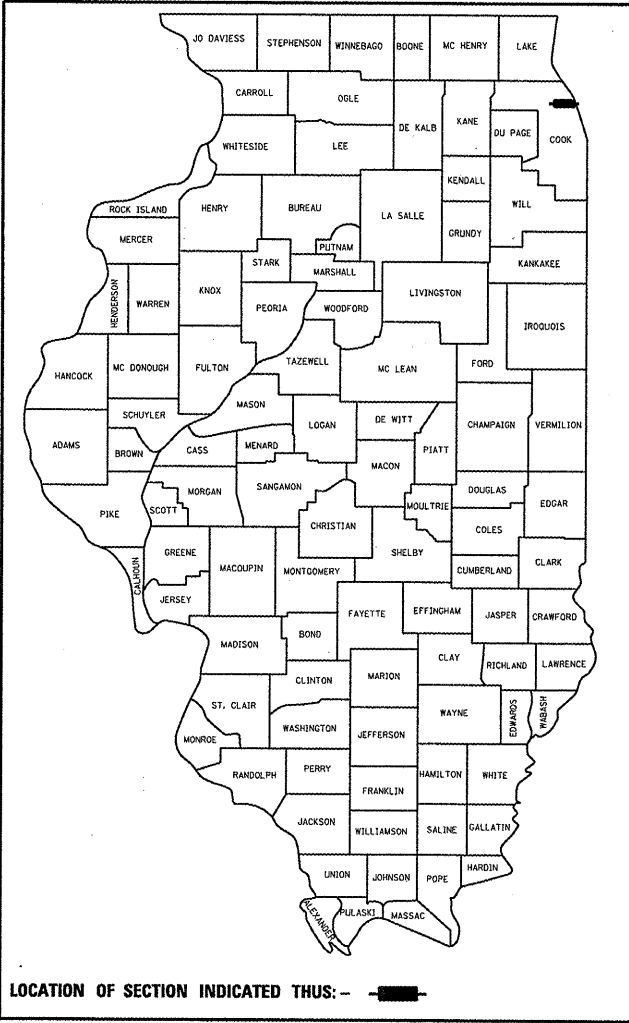
F.A.U. RTE.	SECTION	COUNTY	TOTAL SHEETS	SHEET NO.
1313	( 99B&0808 ) RS-1	COOK	30	1
ILLINOIS CONTRACT NO. 60R99				

\* 30 & 2 = 32

D-91-273-12

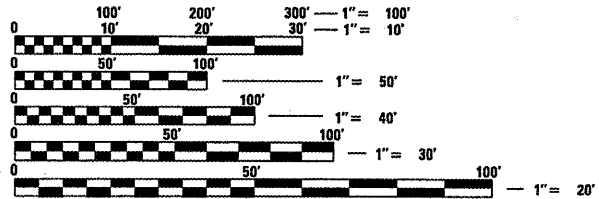
FOR INDEX OF SHEETS, SEE SHEET NO. 2

THE PROJECT IS LOCATED IN THE VILLAGE OF SKOKIE AND THE CITY OF EVANSTON



**TRAFFIC DATA**

2010 ADT = 14900  
POSTED SPEED LIMIT = 20 - 30 MPH

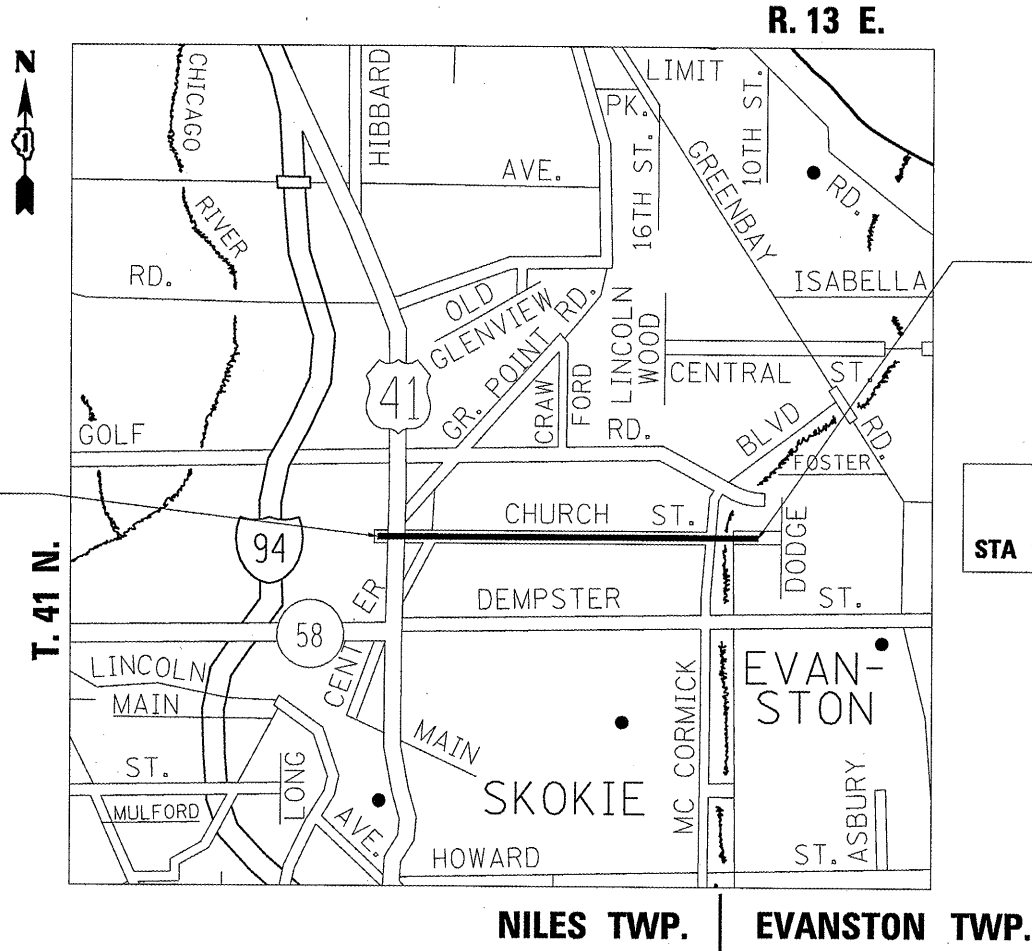


FULL SIZE PLANS HAVE BEEN PREPARED USING STANDARD ENGINEERING SCALES. REDUCED SIZED PLANS WILL NOT CONFORM TO STANDARD SCALES. IN MAKING MEASUREMENTS ON REDUCED PLANS, THE ABOVE SCALES MAY BE USED.

J.U.L.I.E.  
JOINT UTILITY LOCATION INFORMATION FOR EXCAVATION  
1-800-892-0123  
OR 811

PROJECT ENGINEER: DAN WILGREEN (847) 705-4240  
PROJECT MANAGER: KEN ENG (847) 705-4247

CONTRACT NO. 60R99



PROJECT BEGINS  
STA. 3 + 53

PROJECT ENDS  
STA. 128 + 31

OMISSION:  
STA 107+93 TO STA 113+01

GROSS LENGTH = 12478.0 FT. = 2.363 MILE  
NET LENGTH = 11970.0 FT. = 2.267 MILE

STATE OF ILLINOIS  
DEPARTMENT OF TRANSPORTATION  
DIVISION OF HIGHWAYS

SUBMITTED April 3 2012  
Diane Okrofski  
DEPUTY DIRECTOR OF HIGHWAYS, REGION ENGINEER

May 11 2012  
John D. Baranzelli P.E.  
ENGINEER OF DESIGN AND ENVIRONMENT

May 11 2012  
William R. Frey  
DIRECTOR OF HIGHWAYS, CHIEF ENGINEER

**PRINTED BY THE AUTHORITY  
OF THE STATE OF ILLINOIS**

Rev. 6-1-12

SHEET NO.	DESCRIPTION
1	TITLE SHEET
2	INDEX OF SHEETS, STATE STANDARDS & GENERAL NOTES
3-5	SUMMARY OF QUANTITIES
6-7	EXISTING AND PROPOSED TYPICAL SECTIONS
8-12	ROADWAY AND PAVEMENT MARKING PLANS
13-16	DETECTOR LOOP REPLACEMENT PLANS
17	DRIVEWAY DETAILS DISTANCE BETWEEN ROW AND FACE OF CURB < 15' (4.5M)
18	DETAILS FOR FRAMES AND LIDS ADJUSTMENT WITH MILLING
19	PAVEMENT PATCHING FOR HMA SURFACED PAVEMENT
20	CURB OR CURB AND GUTTER REMOVAL AND REPLACEMENT
21	BUTT JOINT AND HMA TAPER DETAILS
22	HMA TAPER AT EDGE OF P.C.C. PAVEMENT
23	TRAFFIC CONTROL AND PROTECTION FOR SIDE ROADS, INTERSECTIONS AND DRIVEWAYS
24	TYPICAL APPLICATIONS: RAISED REFLECTIVE PAVEMENT MARKERS (SNOW-PLOW RESISTANT)
25	DISTRICT ONE TYPICAL PAVEMENT MARKINGS
26	TRAFFIC CONTROL AND PROTECTION AT TURN BAYS (TO REMAIN OPEN TO TRAFFIC)
27	PAVEMENT MARKING LETTERS AND SYMBOLS FOR TRAFFIC STAGING
28	ARTERIAL ROAD INFORMATION SIGN (TO REMAIN OPEN TO TRAFFIC)
29	DISTRICT 1 STANDARD TRAFFIC SIGNAL DESIGN DETAILS
30	DISTRICT 1 DETECTOR LOOP INSTALLATION DETAILS FOR ROADWAY RESURFACING

STANDARD NO.	DESCRIPTION
000001-00	TYPICAL SYMBOLS, ABBREVIATIONS AND PATTERNS
442201-03	CLASS C AND D PATCHES
606001-04	CONCRETE CURB TYPE B AND COMBINATION CONCRETE CURB AND GUTTER
701101-02	OFF-ROAD MOVING OPERATIONS, 2L, 2W, DAY ONLY
<del>701301-04</del>	<del>LANE CLOSURE, 2L, 2W, SHORT-TIME OPERATIONS</del>
701427	LANE CLOSURE, MULTILANE, INTERMITTENT OR MOVING OPER., FOR SPEEDS <= 40 MPH
<del>701501-06</del>	<del>URBAN LANE CLOSURE, 2L, 2W, UNDIVIDED</del>
701606-08	URBAN LANE CLOSURE, MULTILANE, 2 W WITH MOUNTABLE MEDIAN
701701-03	URBAN LANE CLOSURE, MULTILANE INTERSECTION.
701801-05	LANE CLOSURE MULTILANE 1W OR 2W CROSSWALK OR SIDEWALK CLOSURE
701901-02	TRAFFIC CONTROL DEVICES

- BEFORE STARTING ANY EXCAVATION, THE CONTRACTOR SHALL CALL "JULIE" AT (800) 892-0123 OR 811 FOR FIELD LOCATIONS OF BURIED ELECTRIC, TELEPHONE, AND GAS FACILITIES. (48 HOUR NOTIFICATION REQUIRED)
- THE CONTRACTOR SHALL COORDINATE CONSTRUCTION ACTIVITIES WITH UTILITY COMPANIES, THE VILLAGE OF SKOKIE AND THE CITY OF EVANSTON.
- THE CONTRACTOR WILL NOT BE ALLOWED TO SET UP A YARD OR FIELD OFFICE ON STATE PROPERTY WITHOUT THE WRITTEN PERMISSION OF THE DEPARTMENT.
- ANY PAVEMENT MARKINGS AND RAISED REFLECTIVE PAVEMENT MARKERS OBLITERATED BY MILLING AND RESURFACING OPERATIONS ON SIDE STREETS AND ENTRANCES SHALL BE REPLACED AND PAID FOR IN KIND.
- ALL DAMAGE TO EXISTING PAVEMENT MARKINGS OR RAISED REFLECTIVE PAVEMENT MARKERS OUTSIDE THE REMOVAL LINE SHOWN ON THE PLANS SHALL BE REPLACED AT THE CONTRACTOR'S EXPENSE.
- BEFORE BEGINNING ANY WORK, THE CONTRACTOR SHALL RETAIN AND RECORD FOR FUTURE REFERENCE, ALL EXISTING PAVEMENT MARKING LINES (AND RAISED REFLECTIVE PAVEMENT MARKERS) IN ORDER THAT THESE LOCATIONS CAN BE RE-ESTABLISHED FOR STRIPING. EXACT LOCATIONS OF ALL PAVEMENT MARKINGS SHALL BE AS DIRECTED BY THE ENGINEER.
- ALL PAVEMENT PATCHING AND CURB AND GUTTER REMOVAL AND REPLACEMENT LOCATIONS WILL BE DETERMINED IN THE FIELD BY THE ENGINEER.
- IT SHALL BE THE CONTRACTOR'S RESPONSIBILITY TO VERIFY ALL DIMENSIONS AND CONDITIONS EXISTING IN THE FIELD PRIOR TO CONSTRUCTION AND ORDERING OF MATERIALS.
- THE CONTRACTOR SHALL CONTACT THE DISTRICT ONE TRAFFIC CONTROL SUPERVISOR AT (847) 705-4470 A MINIMUM OF 72 HOURS IN ADVANCE OF BEGINNING WORK.
- THE RESIDENT ENGINEER SHALL CONTACT WALLY CZARNY, AREA TRAFFIC FIELD ENGINEER, AT (773) 685-4342 A MINIMUM OF 2 WEEKS PRIOR TO PLACEMENT OF PERMANENT PAVEMENT MARKINGS.
- THE CONTRACTOR SHALL BE REQUIRED TO PROVIDE ACCESS TO ABUTTING PROPERTY AT ALL TIMES DURING THE CONSTRUCTION OF THIS PROJECT.
- ALL EXISTING DETECTOR LOOPS NOT SPECIFIED IN THE PLANS THAT ARE REMOVED DUE TO MILLING OPERATIONS SHALL BE REPLACED AND PAID FOR AT THE CONTRACT UNIT PRICE.
- EXISTING BROKEN FRAMES AND LIDS SHALL BE REMOVED AND DISPOSED OF BY THE CONTRACTOR AND SHALL BE REPLACED AS DIRECTED BY THE ENGINEER. REPLACEMENT FRAMES AND LIDS WILL BE PAID FOR ACCORDING TO ARTICLE 109.04 OF THE STANDARD SPECIFICATIONS UNLESS A SEPARATE PAY ITEM HAS BEEN PROVIDED.
- SAW CUTTING OF PAVEMENTS, CURB & GUTTER, ETC. SHALL BE TO FULL DEPTH AND SHALL RESULT IN A CLEAN STRAIGHT EDGE ON THE PORTION REMAINING. ALL SAW CUTTING SHALL BE CONSIDERED INCLUDED IN THE COST OF THE ITEM REMOVED.
- DO NOT SCALE PLANS FOR CONSTRUCTION DIMENSIONS.
- DOUBLE LANE MARKERS ARE TO BE USED AS SHOWN ON THE DISTRICT ONE DETAIL "TYPICAL APPLICATIONS - RAISED REFLECTIVE PAVEMENT MARKERS (SNOW-PLOW RESISTANT)" SHOWN IN THE PLANS.
- PAVEMENT MARKING TAPE, TYPE III SHALL BE USED FOR SHORT TERM PAVEMENT MARKINGS ON ALL FINAL SURFACES. THE COST OF THE PAVEMENT MARKING TAPE, TYPE III AND ITS REMOVAL SHALL BE INCLUDED IN THE COST OF SHORT TERM PAVEMENT MARKING
- WHEN MILLED PAVEMENT IS OPEN TO TRAFFIC, THE MAXIMUM GRADE DIFFERENTIAL BETWEEN PASSES OF THE MILLING MACHINE SHALL NOT EXCEED 1 1/2 INCHES WHERE THE SPEED LIMIT IS 45 MPH OR LESS, AND 1 INCH WHERE THE SPEED LIMIT IS OVER 45 MPH. WITH WRITTEN APPROVAL FROM THE RESIDENT ENGINEER, A MAXIMUM GRADE DIFFERENTIAL OF 3 INCHES MAY BE ALLOWED IF THE EDGE OF THE MILLING IS SLOPED A MINIMUM OF 1:3 (V:H).
- BUTT JOINTS WILL BE INSTALLED AT THE ENDS OF RESURFACING (WHERE RESURFACING MEETS EXISTING PAVEMENT) IN ACCORDANCE WITH THE "BUTT JOINT AND HMA TAPER DETAILS" SHEET INCLUDED IN THE PLANS, UNLESS OTHERWISE SPECIFIED.
- UNLESS OTHER CONDITIONS WARRANT EXTENDED LANE CLOSURE AS DETERMINED AND APPROVED IN WRITING BY THE ENGINEER OR AS PROVIDED FOR IN THE CONTRACT SPECIFICATIONS, OVERNIGHT CLOSURES SHALL NOT BE ALLOWED FOR REHABILITATION PROJECTS INVOLVING DAYTIME MILLING AND RESURFACING OPERATIONS AND CLASS D PATCHING.

~~701301-04~~ LANE CLOSURE, 2L, 2W, SHORT-TIME OPERATIONS

MULTILANE, 15' TO 24" FROM PAVT. EDGE

~~701501-06~~ URBAN LANE CLOSURE, 2L, 2W, UNDIVIDED



Rev. 6-1-12

FILE NAME =	USER NAME = rodriguez	DESIGNED -	REVISED -	STATE OF ILLINOIS DEPARTMENT OF TRANSPORTATION	INDEX OF SHEETS, STATE STANDARDS AND GENERAL NOTES CHURCH ST. (GROSS POINT RD. TO DODGE AVE.)	F.A.U.	SECTION	COUNTY	TOTAL SHEETS	SHEET NO.	
c:\pwwork\pwwork\rodriguez\0293791	127312-shl-gennote.dgn	DRAWN -	REVISED -			1313	(99B&0800)RS-1	COOK	30	2	
PLOT SCALE = 100.0000' / in.	CHECKED -	REVISED -				CONTRACT NO. 60R99					
PLOT DATE = 4/5/2012	DATE -	REVISED -				ILLINOIS FED. AID PROJECT					

SUMMARY OF QUANTITIES			URBAN		CONSTRUCTION TYPE CODE				
CODE NO	ITEM	UNIT	TOTAL QUANTITIES	100% STATE 0005					
60300305	FRAMES AND LIDS TO BE ADJUSTED	EACH	17	17					
67000400	ENGINEER'S FIELD OFFICE, TYPE A	CAL MO	6	6					
67100100	MOBILIZATION	L SUM	1	1					
<del>70102620</del>	<del>TRAFFIC CONTROL AND PROTECTION,</del>	<del>L SUM</del>	<del>1</del>	<del>1</del>					
	<del>STANDARD 701501</del>								
70102625	TRAFFIC CONTROL AND PROTECTION,	L SUM	1	1					
	STANDARD 701606								
70102635	TRAFFIC CONTROL AND PROTECTION,	L SUM	1	1					
	STANDARD 701701								
70102640	TRAFFIC CONTROL AND PROTECTION,	L SUM	1	1					
	STANDARD 701801								
70300100	SHORT TERM PAVEMENT MARKING	FOOT	6053	6053					
70300210	TEMPORARY PAVEMENT MARKING LETTERS AND	SO FT	110	110					
	SYMBOLS								
70300220	TEMPORARY PAVEMENT MARKING - LINE 4"	FOOT	12058	12058					
70300240	TEMPORARY PAVEMENT MARKING - LINE 6"	FOOT	3988	3988					
70300260	TEMPORARY PAVEMENT MARKING - LINE 12"	FOOT	1500	1500					
70300280	TEMPORARY PAVEMENT MARKING - LINE 24"	FOOT	980	980					

SUMMARY OF QUANTITIES			URBAN		CONSTRUCTION TYPE CODE				
CODE NO	ITEM	UNIT	TOTAL QUANTITIES	100% STATE 0005					
70301000	WORK ZONE PAVEMENT MARKING REMOVAL	SO FT	673	673					
* 78000100	THERMOPLASTIC PAVEMENT MARKING -	SO FT	110	110					
	LETTERS AND SYMBOLS								
* 78000200	THERMOPLASTIC PAVEMENT MARKING - LINE 4"	FOOT	12058	12058					
* 78000400	THERMOPLASTIC PAVEMENT MARKING - LINE 6"	FOOT	3988	3988					
* 78000600	THERMOPLASTIC PAVEMENT MARKING - LINE 12"	FOOT	1500	1500					
* 78000650	THERMOPLASTIC PAVEMENT MARKING - LINE 24"	FOOT	1031	1031					
* 78100100	RAISED REFLECTIVE PAVEMENT MARKER	EACH	521	521					
78300200	RAISED REFLECTIVE PAVEMENT MARKER	EACH	500	500					
	REMOVAL								
* 88600600	DETECTOR LOOP REPLACEMENT	FOOT	739	739					
X4400100	PORTLAND CEMENT CONCRETE SURFACE	SO YD	1450	1450					
	REMOVAL (VARIABLE DEPTH)								
X5537800	STORM SEWERS TO BE CLEANED 12"	FOOT	2000	2000					
	* SPECIALTY ITEM								

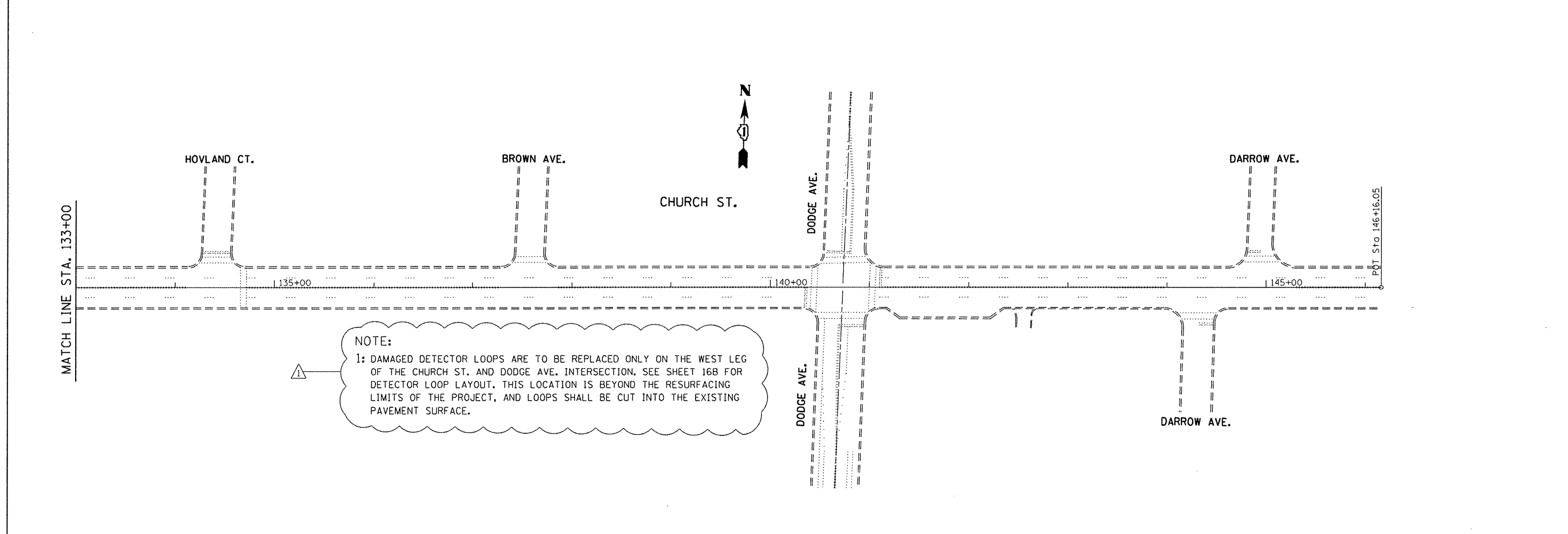
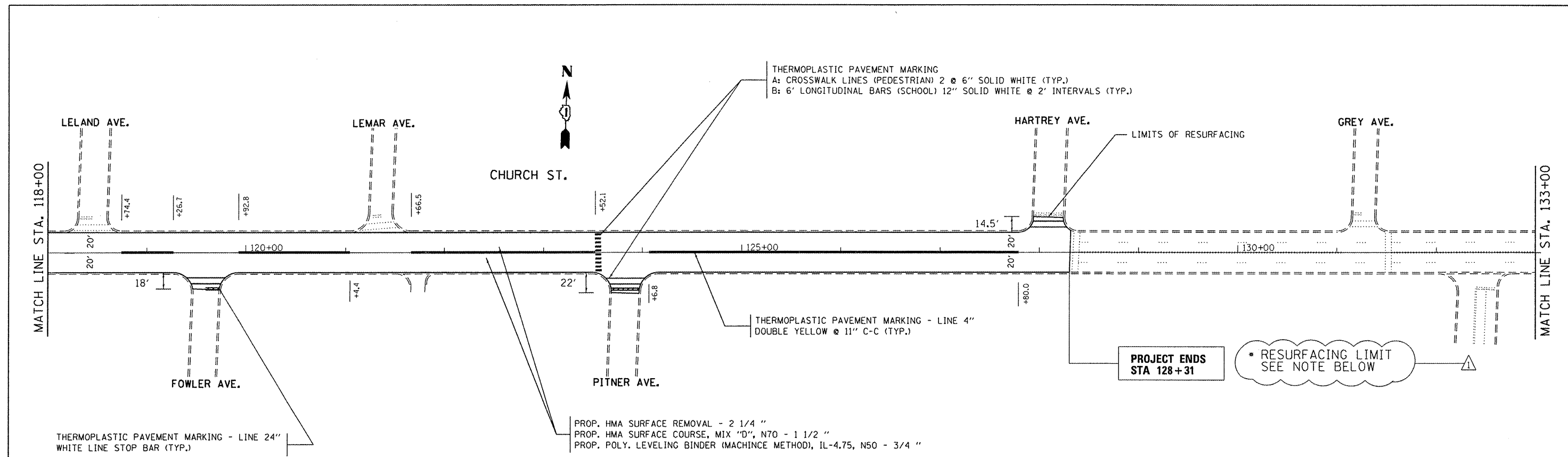
FILE NAME =	USER NAME = rodriguezmo	DESIGNED -	REVISED -
ca\pw_wor\pw\rodriguezmo\029379\0127312-87-0000\0000.dgn		DRAWN -	REVISED -
		CHECKED -	REVISED -
		DATE -	REVISED -

**STATE OF ILLINOIS  
DEPARTMENT OF TRANSPORTATION**

**CHURCH ST. (GROSS POINT RD. TO DODGE AVE.)  
SUMMARY OF QUANTITIES**

F.A.U. RTE.	SECTION	COUNTY	TOTAL SHEETS	SHEET NO.
1313	(99B&0808)RS-1	COOK	30	4
CONTRACT NO. 60R99				
FED. ROAD DIST. NO. 1 ILLINOIS FED. AID PROJECT				

Rev. 5-1-12

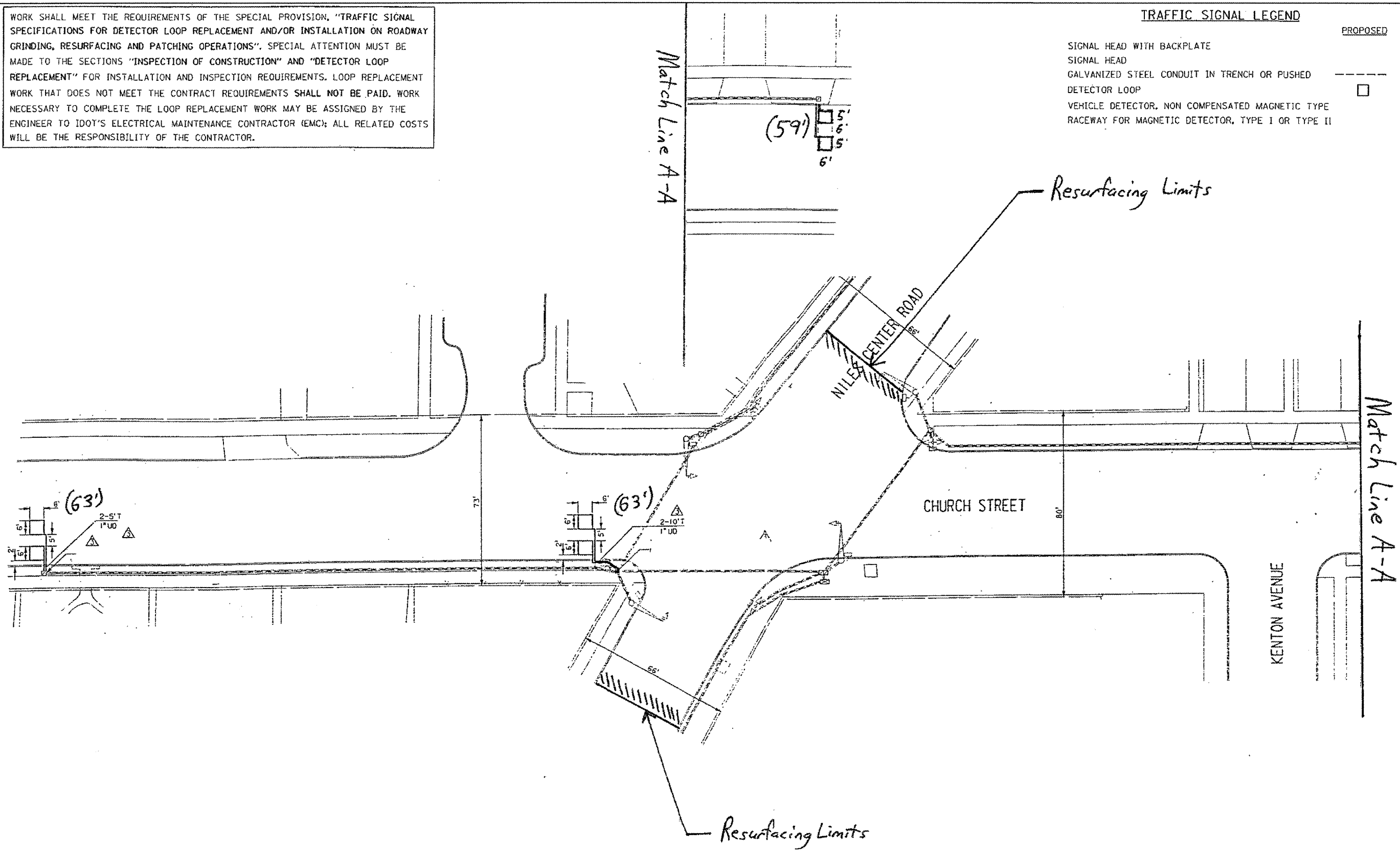


FILE NAME =	USER NAME = rodriguezmo	DESIGNED -	REVISED -	<b>STATE OF ILLINOIS</b> <b>DEPARTMENT OF TRANSPORTATION</b>	<b>CHURCH ST. (GROSS POINT RD. TO DODGE AVE.)</b> <b>ROADWAY AND PAVEMENT MARKING PLAN</b>	F.A.U. RTE.	SECTION	COUNTY	TOTAL SHEETS	SHEET NO.	
127312-shr-plan.dgn	127312-shr-plan.dgn	DRAWN -	REVISED -			1313	(99B&0808)RS-1	COOK	30	12	
PLOT SCALE = 100.0000' / 1" =		CHECKED -	REVISED -			CONTRACT NO. 60R99					
PLOT DATE = 5/31/2012		DATE -	REVISED -			ILLINOIS FED. AID PROJECT					

WORK SHALL MEET THE REQUIREMENTS OF THE SPECIAL PROVISION, "TRAFFIC SIGNAL SPECIFICATIONS FOR DETECTOR LOOP REPLACEMENT AND/OR INSTALLATION ON ROADWAY GRINDING, RESURFACING AND PATCHING OPERATIONS". SPECIAL ATTENTION MUST BE MADE TO THE SECTIONS "INSPECTION OF CONSTRUCTION" AND "DETECTOR LOOP REPLACEMENT" FOR INSTALLATION AND INSPECTION REQUIREMENTS. LOOP REPLACEMENT WORK THAT DOES NOT MEET THE CONTRACT REQUIREMENTS SHALL NOT BE PAID. WORK NECESSARY TO COMPLETE THE LOOP REPLACEMENT WORK MAY BE ASSIGNED BY THE ENGINEER TO IDOT'S ELECTRICAL MAINTENANCE CONTRACTOR (EMC); ALL RELATED COSTS WILL BE THE RESPONSIBILITY OF THE CONTRACTOR.

**TRAFFIC SIGNAL LEGEND**

	PROPOSED	EXISTING
SIGNAL HEAD WITH BACKPLATE		
SIGNAL HEAD		
GALVANIZED STEEL CONDUIT IN TRENCH OR PUSHED		
DETECTOR LOOP		
VEHICLE DETECTOR, NON COMPENSATED MAGNETIC TYPE		
RACEWAY FOR MAGNETIC DETECTOR, TYPE I OR TYPE II		



**THIS PLAN IS FOR THE SOLE PURPOSE OF DETECTOR LOOP REPLACEMENTS ONLY**

**REPLACE ALL DETECTOR LOOPS AS SHOWN (WITHIN THE RESURFACING LIMITS)**

CODE	QUANTITY	UNIT	ITEM
88600600	185	FOOT	DETECTOR LOOP REPLACEMENT

FILE NAME =	USER NAME = rodriguezma	DESIGNED -	REVISED -  MAR 5-31-12
ct:\pwork\pvidot\rodriguezma\d0293791\127312-sht\plendgn		DRAWN -	REVISED -
		CHECKED -	REVISED -
		DATE -	REVISED -

**STATE OF ILLINOIS  
DEPARTMENT OF TRANSPORTATION**

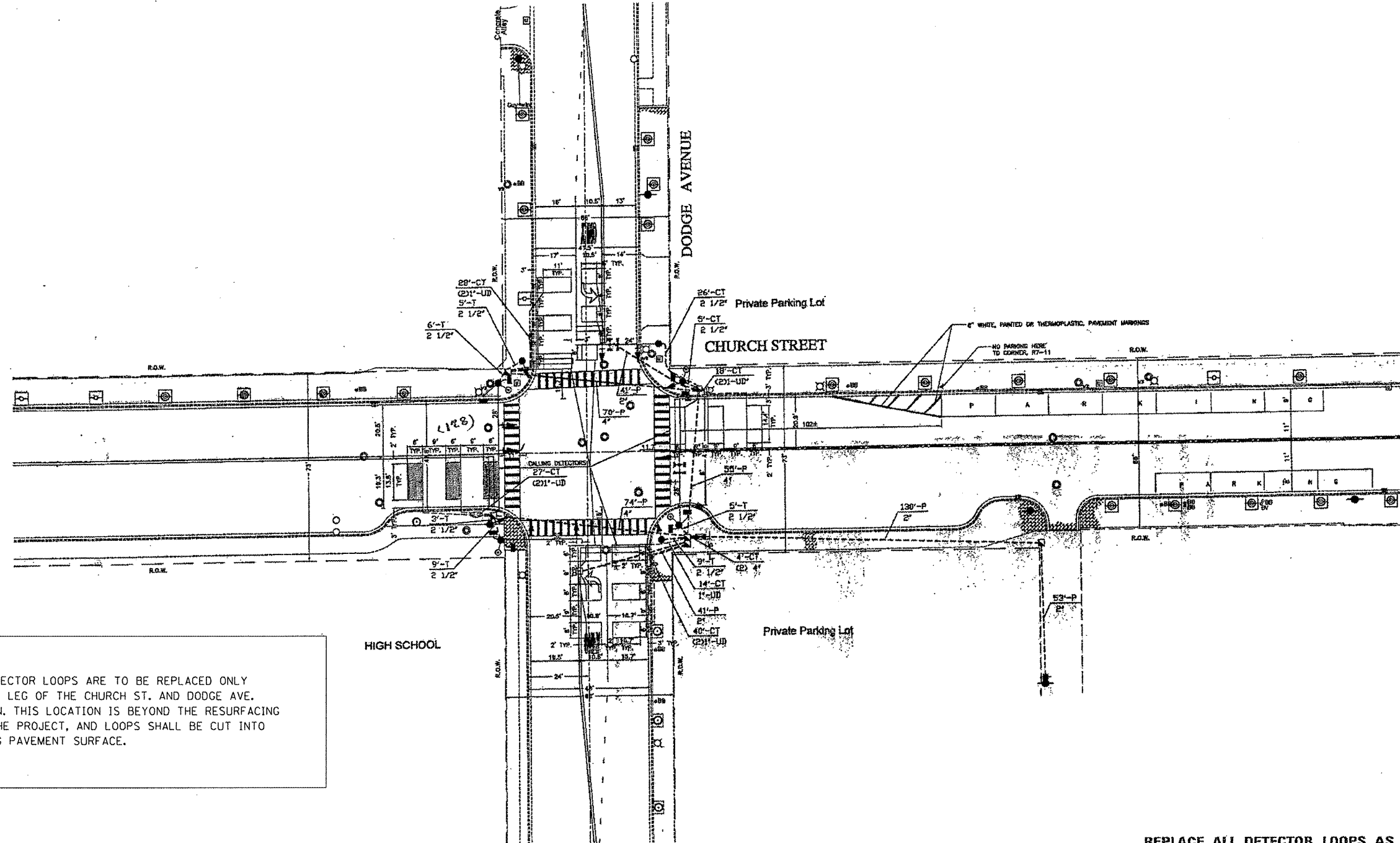
**DISTRICT ONE - DETECTOR LOOP REPLACEMENT  
CHURCH ST. AT NILES CENTER RD.**

F.A.U. RTE. 1313	SECTION (99B&0808RS-1)	COUNTY COOK	TOTAL SHEETS 30	SHEET NO. 16A
SCALE: SHEET OF SHEETS STA. TO STA.			CONTRACT NO. 60R99	
ILLINOIS FED. AID PROJECT				

WORK SHALL MEET THE REQUIREMENTS OF THE SPECIAL PROVISION, "TRAFFIC SIGNAL SPECIFICATIONS FOR DETECTOR LOOP REPLACEMENT AND/OR INSTALLATION ON ROADWAY GRINDING, RESURFACING AND PATCHING OPERATIONS". SPECIAL ATTENTION MUST BE MADE TO THE SECTIONS "INSPECTION OF CONSTRUCTION" AND "DETECTOR LOOP REPLACEMENT" FOR INSTALLATION AND INSPECTION REQUIREMENTS. LOOP REPLACEMENT WORK THAT DOES NOT MEET THE CONTRACT REQUIREMENTS SHALL NOT BE PAID. WORK NECESSARY TO COMPLETE THE LOOP REPLACEMENT WORK MAY BE ASSIGNED BY THE ENGINEER TO IDOT'S ELECTRICAL MAINTENANCE CONTRACTOR (EMC); ALL RELATED COSTS WILL BE THE RESPONSIBILITY OF THE CONTRACTOR.

**TRAFFIC SIGNAL LEGEND**

	<b>PROPOSED</b>	<b>EXISTING</b>
SIGNAL HEAD WITH BACKPLATE		
SIGNAL HEAD		
GALVANIZED STEEL CONDUIT IN TRENCH OR PUSHED		
DETECTOR LOOP		
VEHICLE DETECTOR, NON COMPENSATED MAGNETIC TYPE		
RACEWAY FOR MAGNETIC DETECTOR, TYPE I OR TYPE II		



**NOTE:**  
 1: DAMAGED DETECTOR LOOPS ARE TO BE REPLACED ONLY ON THE WEST LEG OF THE CHURCH ST. AND DODGE AVE. INTERSECTION. THIS LOCATION IS BEYOND THE RESURFACING LIMITS OF THE PROJECT, AND LOOPS SHALL BE CUT INTO THE EXISTING PAVEMENT SURFACE.

**THIS PLAN IS FOR THE SOLE PURPOSE OF DETECTOR LOOP REPLACEMENTS ONLY**

**REPLACE ALL DETECTOR LOOPS AS SHOWN (WITHIN THE RESURFACING LIMITS)**

CODE	QUANTITY	UNIT	ITEM
88600600	128	FOOT	DETECTOR LOOP, REPLACEMENT

FILE NAME =	USER NAME = rodriguezma	DESIGNED -	REVISED - $\Delta$ MAR 5-31-12
c:\pwwork\pwwork\rodriguezma\d0293791\127312-sht-plen.dgn		DRAWN -	REVISED -
PLOT SCALE = 100.0000' / 1" =		CHECKED -	REVISED -
PLOT DATE = 5/31/2012		DATE -	REVISED -

**STATE OF ILLINOIS  
 DEPARTMENT OF TRANSPORTATION**

**DISTRICT ONE - DETECTOR LOOP REPLACEMENT  
 CHURCH ST. AT DODGE AVE.**

F.A.U. RTE. 1313	SECTION (99B&080BRS-1)	COUNTY COOK	TOTAL SHEETS 30	SHEET NO. 16B
SCALE: SHEET OF SHEETS STA. TO STA.			CONTRACT NO. 60R99	
ILLINOIS FED. AID PROJECT				