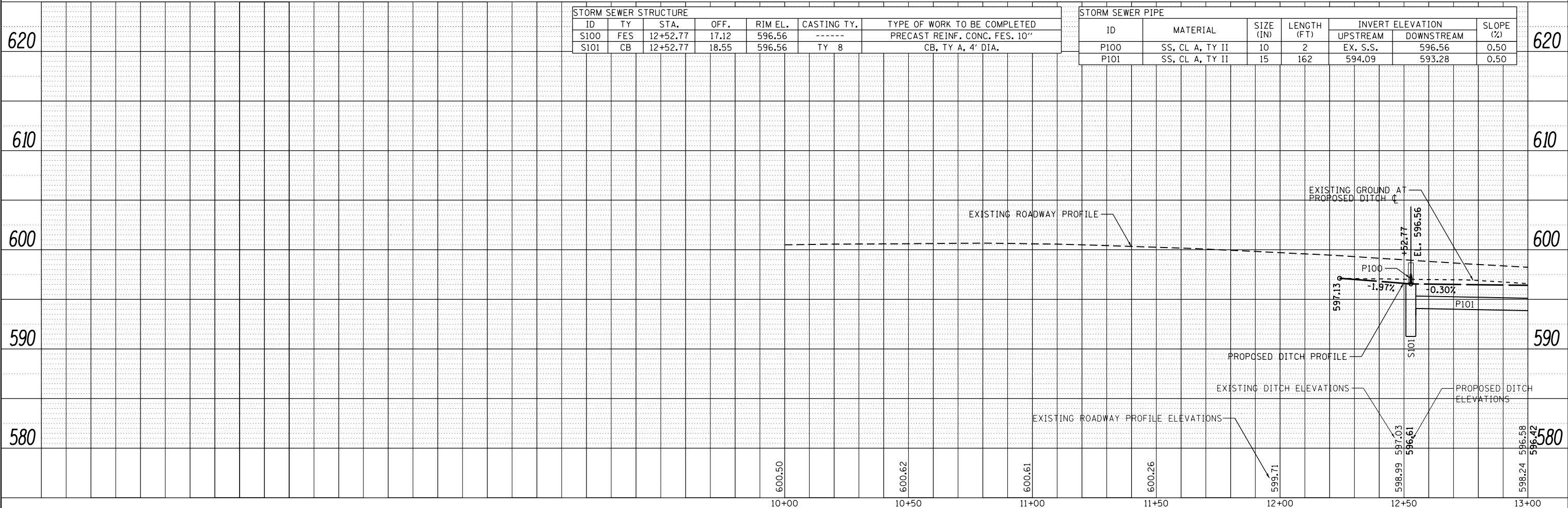
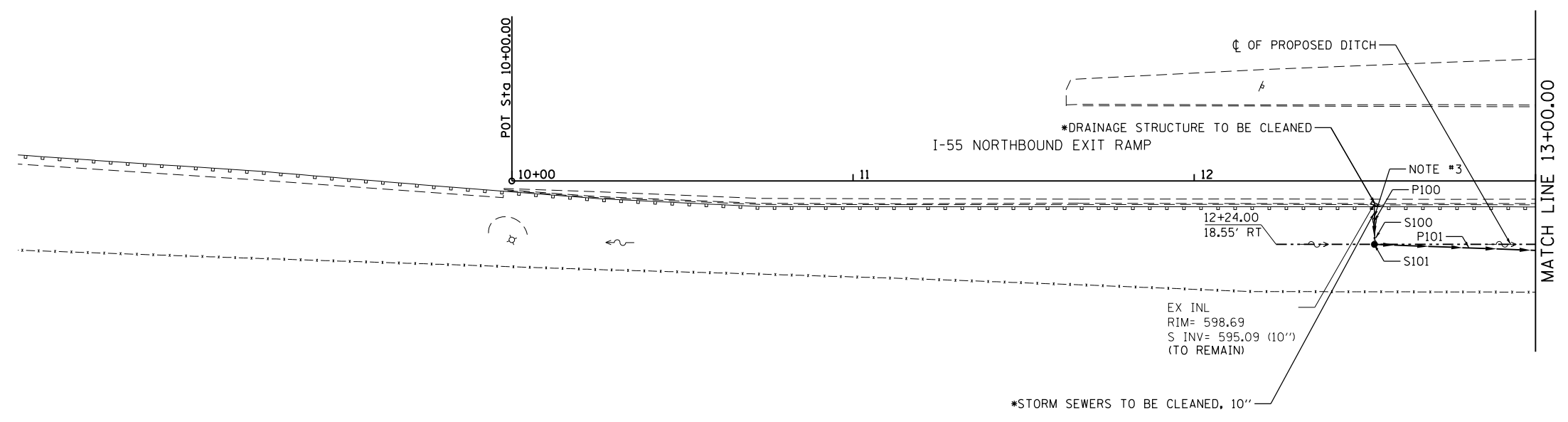


- NOTES:
- \*1. CONTRACTOR TO VERIFY UPSTREAM AND DOWNSTREAM INVERTS OF STRUCTURES AND PIPES BEFORE CONSTRUCTION.
  2. THE ENVIRONMENTAL FIRM IS REQUIRED TO CONTINUOUSLY MONITOR FOR WORKER PROTECTION AND SOIL CONTAMINATION AT SEVERAL AREAS. SEE SPECIAL PROVISION AND SUPPLEMENTAL SPECIFICATIONS FOR DETAILS.
  3. CONNECT TO EXISTING STORM SEWER WITH CONCRETE COLLAR (INCIDENTAL TO STORM SEWER).

**LEGEND**

BOUNDARY LINES/SYMBOLS	EXISTING	PROPOSED
DITCH & SWALE BOTTOM	---	---
ROADWAY DITCH FLOW	~>	~>
SUMMIT	~<~>	~<~>
STORM SEWER	—▶	—▶
CATCH BASIN	○	●
INLET	□	■
MANHOLE	○	⊙

I-55 NORTHBOUND



STORM SEWER STRUCTURE						
ID	TY	STA.	OFF.	RIM EL.	CASTING TY.	TYPE OF WORK TO BE COMPLETED
S100	FES	12+52.77	17.12	596.56	-----	PRECAST REINF. CONC. FES. 10"
S101	CB	12+52.77	18.55	596.56	TY 8	CB, TY A, 4' DIA.

STORM SEWER PIPE						
ID	MATERIAL	SIZE (IN)	LENGTH (FT)	INVERT ELEVATION		SLOPE (%)
				UPSTREAM	DOWNSTREAM	
P100	SS, CL A, TY II	10	2	EX. S.S.	596.56	0.50
P101	SS, CL A, TY II	15	162	594.09	593.28	0.50

PLAN	SURVEYED	DATE
	BY	
	NOTED	
	FILE NAME	

PROFILE	SURVEYED	DATE
	BY	
	NOTED	
	FILE NAME	

FILE NAME = SA:\JOL\63800-63999\6346\035\Micro\CA00\_Sheets\01606399-shr-dr-01.dgn



USER NAME = dennisw	DESIGNED - TJS	REVISED -
PLOT SCALE = 40.0000' / in.	DRAWN - DJW	REVISED -
PLOT DATE = 4/2/2012	CHECKED - MAG	REVISED -
	DATE - 4-2-12	REVISED -

STATE OF ILLINOIS  
DEPARTMENT OF TRANSPORTATION

I-55 NORTHBOUND EXIT RAMP  
DRAINAGE & GRADING PLAN & PROFILE  
SCALE: 1" = 20' SHEET 1 OF 3 SHEETS STA. 10+00.00 TO STA. 13+00.00

F.A.I. RTE.	SECTION	COUNTY	TOTAL SHEETS	SHEET NO.
55	112-636T	COOK	36	19
CONTRACT NO. 60T37				

FED. ROAD DIST. NO. 1 ILLINOIS FED. AID PROJECT