

INDEX OF SHEETS

1. TITLE SHEET
2. GENERAL NOTES
- 3.-8. SUMMARY OF QUANTITIES
- 9.-14. DISTRICT ONE STANDARD TRAFFIC SIGNAL DESIGN DETAILS
15. TRAFFIC SIGNAL MODIFICATION PLAN
U.S. ROUTE 12 /20 (95TH STREET) AT IL ROUTE 50 (CICERO AVENUE)
16. SCHEDULE OF QUANTITIES, CABLE PLAN AND PHASE DESIGNATION DIAGRAM
U.S. ROUTE 12 /20 (95TH STREET) AT IL ROUTE 50 (CICERO AVENUE)
17. TEMPORARY TRAFFIC SIGNAL INSTALLATION AND REMOVAL PLAN
U.S. ROUTE 12 /20 (95TH STREET) AT KOSTNER AVENUE
18. TEMPORARY CABLE PLAN AND PHASE DESIGNATION DIAGRAM
U.S. ROUTE 12 /20 (95TH STREET) AT KOSTNER AVENUE
19. TRAFFIC SIGNAL INSTALLATION PLAN
U.S. ROUTE 12 /20 (95TH STREET) AT KOSTNER AVENUE
20. SCHEDULE OF QUANTITIES, CABLE PLAN AND PHASE DESIGNATION DIAGRAM
U.S. ROUTE 12 /20 (95TH STREET) AT KOSTNER AVENUE
21. TEMPORARY INTERCONNECT SCHEMATIC
U.S. ROUTE 12 /20 (95TH STREET)
- 22.-23. INTERCONNECT PLAN
U.S. ROUTE 12 /20 (95TH STREET)
24. INTERCONNECT SCHEMATIC
U.S. ROUTE 12 /20 (95TH STREET)
25. MAST ARM MOUNTED STREET NAME SIGNS
U.S. ROUTE 12 /20 (95TH STREET) AT KOSTNER AVENUE
26. ARTERIAL ROAD INFORMATION SIGN (TC-22)

STATE OF ILLINOIS

DEPARTMENT OF TRANSPORTATION

DIVISION OF HIGHWAYS

**PLANS FOR PROPOSED
FEDERAL AID HIGHWAY**

DISTRICT 1

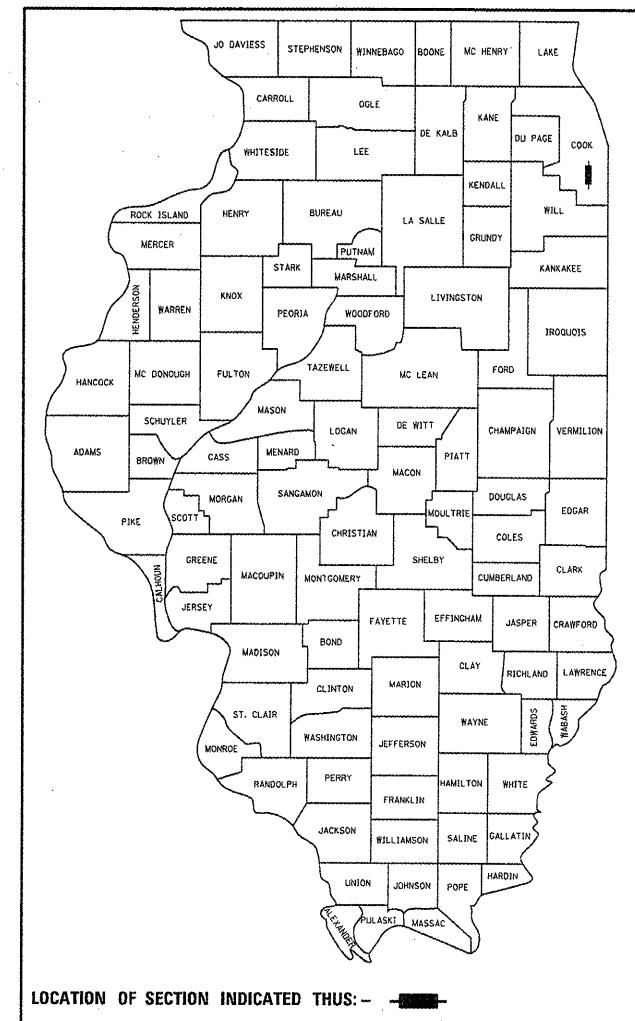
HIGHWAY SAFETY IMPROVEMENT PROJECT

**U.S. ROUTE 12 /20 (95TH STREET) AT
IL ROUTE 50 (CICERO AVENUE) AND KOSTNER AVENUE
F.A.P. ROUTE 029 / U.S. ROUTE 12 /20 (95TH STREET)**

**COOK COUNTY
SECTION 2012-028 TS
C-91-448-12**

F.A.P. RTE.	SECTION	COUNTY	TOTAL SHEETS	SHEET NO.
029	2012-028 TS	COOK	26	1
FED. ROAD DIST. NO.	ILLINOIS	CONTRACT NO. 60T81		

P-91-535-11
D-91-448-12



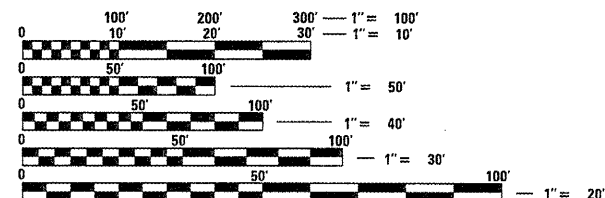
IDOT STANDARDS:

- 701101-02 OFF-ROAD OPERATIONS, MULTILANE, 4.5 m (15') TO 600 mm (24") FROM PAVEMENT EDGE
- 701106-02 OFF-ROAD OPERATIONS, 2L, 2W, 4.5 m (15') TO 600 mm (24") FROM PAVEMENT EDGE
- 701606-08 URBAN LANE CLOSURE, MULTILANE, 2W WITH MOUNTABLE MEDIAN
- 701701-08 URBAN LANE CLOSURE, MULTILANE INTERSECTION
- 701901-02 TRAFFIC CONTROL DEVICES
- 720001-01 SIGN PANEL MOUNTING DETAILS
- 814001-02 HANDHOLES
- 814006-02 DOUBLE HANDHOLES
- 857001-01 STANDARD PHASE DESIGNATION DIAGRAMS AND PHASE SEQUENCES
- 886001-01 DETECTOR LOOP INSTALLATION
- 862001-01 UNINTERRUPTIBLE POWER SUPPLY (UPS)
- 877001-05 STEEL MAST ARM ASSEMBLY AND POLE 16' THROUGH 55'
- 877011-05 STEEL COMB, MAST ARM ASSEMBLY AND POLE 16' THROUGH 55'
- 878001-09 CONCRETE FOUNDATION DETAILS
- 880001-01 SPAN WIRE MOUNTED SIGNALS AND FLASHING BEACON INSTALLATION
- 880006-01 TRAFFIC SIGNAL MOUNTING DETAILS

PROJECT: HSIP-0029(115)



R. 13 E
LOCATION MAP



FULL SIZE PLANS HAVE BEEN PREPARED USING STANDARD ENGINEERING SCALES. REDUCED SIZED PLANS WILL NOT CONFORM TO STANDARD SCALES. IN MAKING MEASUREMENTS ON REDUCED PLANS, THE ABOVE SCALES MAY BE USED.

J.U.L.I.E.
JOINT UTILITY LOCATING INFORMATION FOR EXCAVATORS
1-800-892-0123
OR 811

CONTRACT NO. 60T81



Bruce P. Talbot DATE: 4/17/12
Expires 11-30-13

PREPARED BY:
CEMCON, Ltd.
Consulting Engineers, Land Surveyors & Planners
2280 White Oak Circle, Suite 100
Aurora, Illinois 60504-9675
Ph: 630.862.2100 Fax: 630.862.2199
E-Mail: codd@cemcon.com Website: www.cemcon.com

STATE OF ILLINOIS
DEPARTMENT OF TRANSPORTATION
DIVISION OF HIGHWAYS

SUBMITTED April 19 20 12
Devin M. O'Keefe
DEPUTY DIRECTOR OF HIGHWAYS, REGION ENGINEER

May 11 20 12
John D. Baranzelli, P.E.
acting ENGINEER OF DESIGN AND ENVIRONMENT

May 11 20 12
William R. Frey
acting DIRECTOR OF HIGHWAYS, CHIEF ENGINEER

**PRINTED BY THE AUTHORITY
OF THE STATE OF ILLINOIS**

BUREAU OF TRAFFIC, DISTRICT ONE: STEPHEN TRAVIA / DARYLE DREW (847) 705-4424