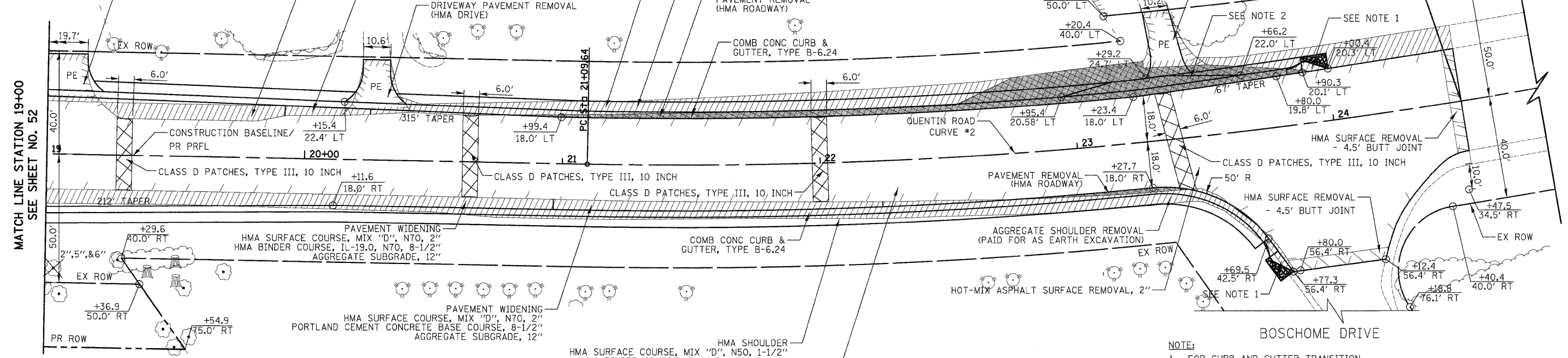
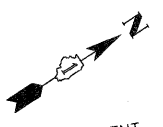


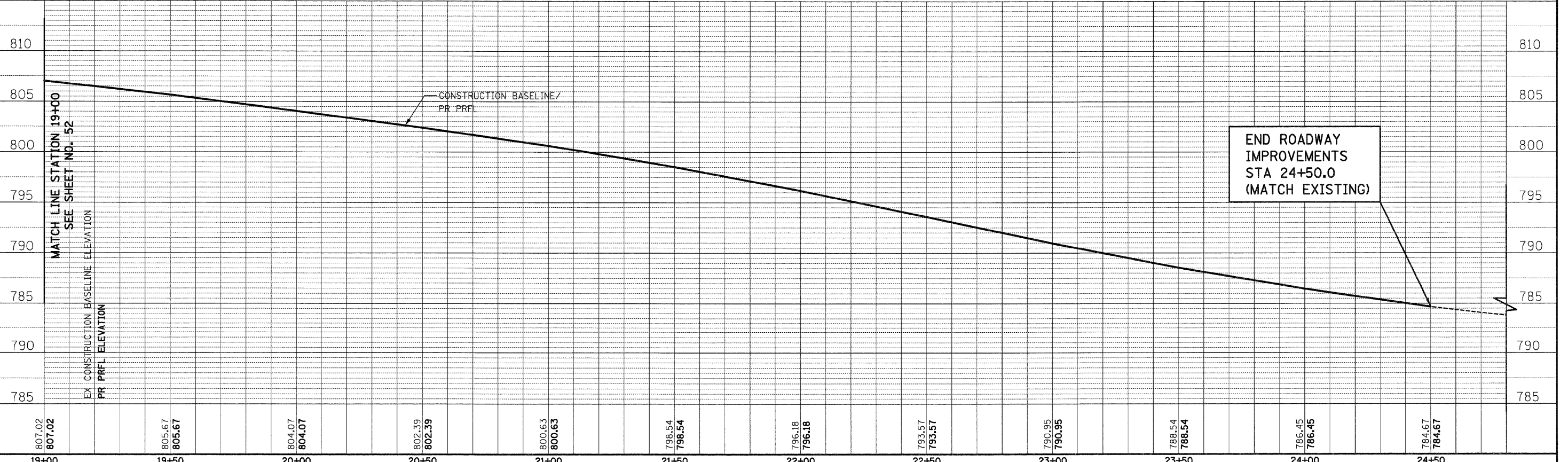
QUENTIN ROAD
 CURVE #2
 PI STA = 24+46.66
 $\Delta = 20^\circ 00' 46''$ (LT)
 $D = 2^\circ 59' 59''$
 $R = 1,910.10'$
 $T = 337.02'$
 $L = 667.18'$
 $E = 29.50'$
 PC STA = 21+09.64
 PT STA = 27+76.82

END ROADWAY
 IMPROVEMENTS
 STA 24+50.0
 (MATCH EXISTING)



GENERAL NOTE:
 ALL DRIVEWAY RADII SHALL BE 15' UNLESS OTHERWISE NOTED. FOR ADDITIONAL DRIVEWAY DETAILS, SEE STANDARD DETAILS LC4100 AND LC4101.

NOTE:
 1. FOR CURB AND GUTTER TRANSITION SEE STANDARD DETAIL LC4801
 2. FOR MAILBOX TURNOUT SEE STANDARD DETAIL LC4121

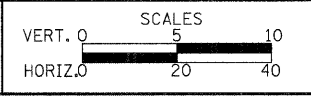


807.02 807.02	805.67 805.67	804.07 804.07	802.39 802.39	800.63 800.63	798.54 798.54	796.18 796.18	793.57 793.57	790.95 790.95	788.54 788.54	786.45 786.45	784.67 784.67
19+00	19+50	20+00	20+50	21+00	21+50	22+00	22+50	23+00	23+50	24+00	24+50

CIVILTECH
 450 E Devon Ave, Suite 300
 Itasca, Illinois 60143
 Tel: 630.773.3900 Fax: 630.773.3975
 www.civiltechinc.com

DESIGNED - JRR
 DRAWN - JRR
 CHECKED - RTM
 DATE - 10/24/2011

STATE OF ILLINOIS
 DEPARTMENT OF TRANSPORTATION



PLAN AND PROFILE
 SHEET NO. 11 OF 13 SHEETS
 STA. 19+00 TO STA. 23+45

F.A.U. SECTION COUNTY TOTAL SHEETS SHEET NO.
 364 02-00051-08-WR LAKE 188 53
 FED. ROAD DIST. NO. 1 ILLINOIS FED. AID PROJECT
 CONTRACT NO. 63649

DATE _____
 BY _____
 SURVEYED _____
 PLOTTED _____
 NOTE BOOK _____
 AREAS CHECKED _____

DATE _____
 BY _____
 ORIGINAL SURVEY _____
 PLOTTED _____
 NOTE BOOK _____
 AREAS CHECKED _____