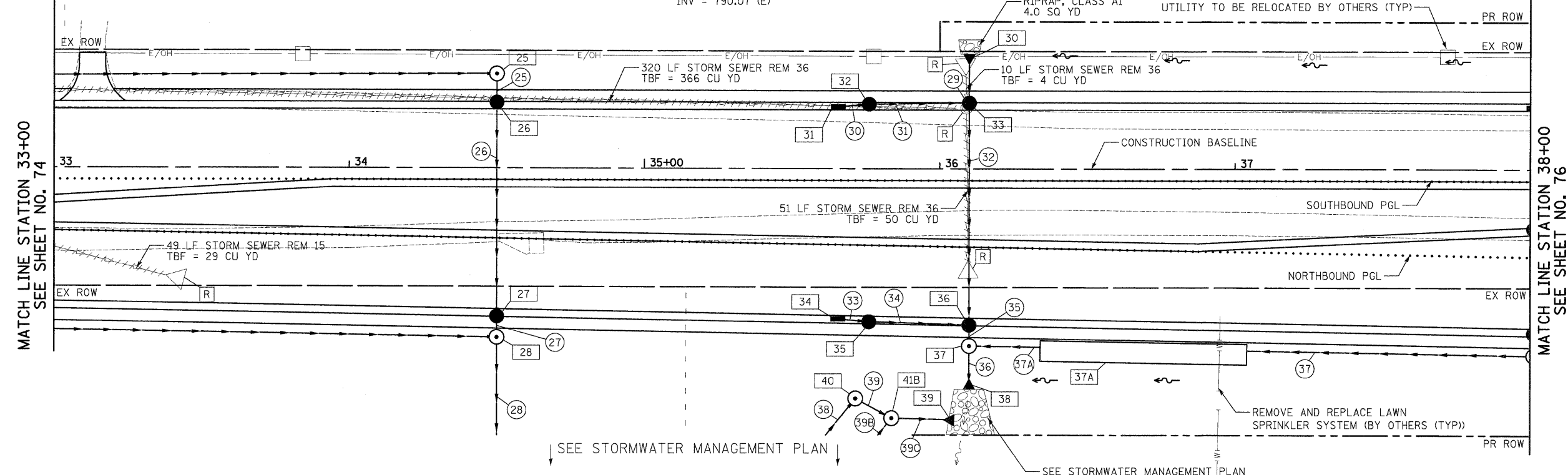


DATE	
BY	
FINAL SURVEY	
PLOTTED	
NOTE BOOK	
AREAS CHECKED	
NO.	

DATE	
BY	
ORIGINAL SURVEY	
PLOTTED	
NOTE BOOK	
AREAS CHECKED	
NO.	

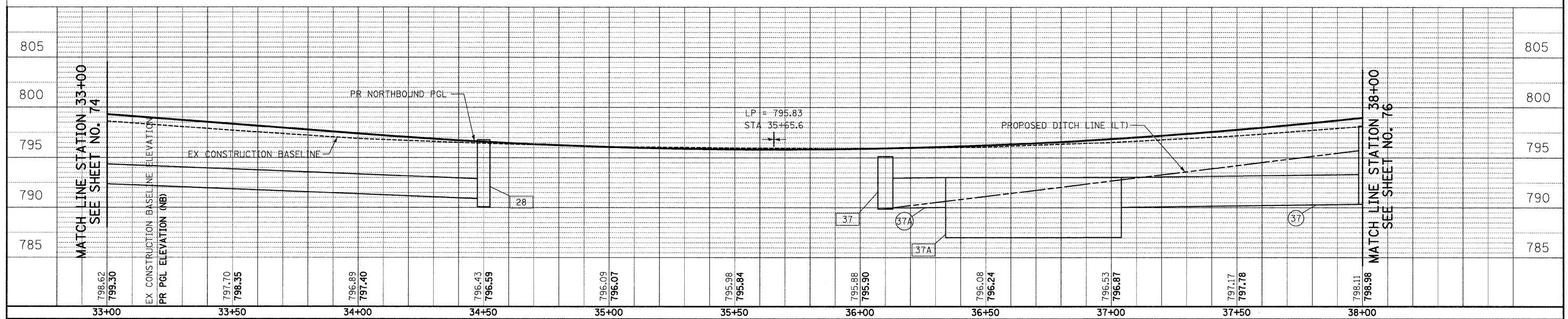
- 25 STA 34+50, 32.0' LT MAN TA 5 DIA TIF CL RIM = 795.34 INV = 790.35 (S) INV = 790.24 (E)
- 26 STA 34+50, 22.4' LT CB TA 5 DIA T24F&G RIM = 796.11 INV = 790.23 (W) INV = 790.22 (E)
- 27 STA 34+50, 50.1' RT CB TA 5 DIA T24F&G RIM = 796.11 INV = 790.09 (W) INV = 790.08 (E)
- 28 STA 34+50, 57.2' RT MAN TA 5 DIA TIF CL RIM = 796.95 INV = 790.07 (W) INV = 790.07 (E) INV = 790.89 (S)
- 29 SEE STORMWATER MANAGEMENT PLAN
- 30 STA 36+10, 39.0' LT PRC FLAR END SEC 36 W/ GRATING INV = 790.07 (E)
- 31 STA 35+65.6, 21.1' LT INLETS TA T24F&G RIM = 795.38 INV = 791.38 (N)
- 32 STA 35+76, 21.9' LT CB TA 4 DIA T24F&G RIM = 795.39 INV = 791.34 (S) INV = 790.30 (N)
- 33 STA 36+10, 22.4' LT CB TA 5 DIA T24F&G RIM = 795.49 INV = 790.04 (E) INV = 790.04 (W) INV = 790.14 (S)
- 34 STA 35+65.6, 50.8' RT INLETS TA T24F&G RIM = 795.38 INV = 791.38 (N)
- 35 STA 35+76, 51.7' RT CB TA 4 DIA T24F&G RIM = 795.39 INV = 791.34 (S) INV = 790.23 (N)



- 25 5' - STORM SEW CL A 1, 36" @ 0.20% TBF = 1 CU YD
- 26 68' - STORM SEW CL A 1, 36" @ 0.20% TBF = 20 CU YD
- 27 3' - STORM SEW CL A 1, 36" @ 0.20% TBF = 1 CU YD
- 28 41' - STORM SEW CL A 1, 36" @ 0.17%
- 29 7' - STORM SEW CL A 1, 36" @ 0.20% TBF = 1 CU YD
- 30 8' - STORM SEW CL A 1, 12" @ 0.50% TBF = 2 CU YD
- 31 30' - STORM SEW CL A 1, 12" @ 0.50% TBF = 9 CU YD
- 32 71' - STORM SEW CL A 1, 36" @ 0.20% TBF = 15 CU YD
- 33 8' - STORM SEW CL A 1, 12" @ 0.50% TBF = 2 CU YD
- 34 30' - STORM SEW CL A 1, 12" @ 0.50% TBF = 9 CU YD
- 35 2' - STORM SEW CL A 1, 36" @ 0.50% TBF = 1 CU YD
- 36 4' - STORM SEW CL A 1, 42" @ 0.20%
- 37 95' - STORM SEW CL A 1, 36" @ 0.30%
- 37A 22' - STORM SEW CL A 1, 36" @ 0.30%
- 38 SEE STORMWATER MANAGEMENT PLAN
- 39 SEE STORMWATER MANAGEMENT PLAN
- 39B SEE STORMWATER MANAGEMENT PLAN
- 39C SEE STORMWATER MANAGEMENT PLAN

- 36 STA 36+10, 52.8' RT CB TA 5 DIA T24F&G RIM = 795.49 INV = 789.89 (W) INV = 789.88 (E) INV = 790.08 (S)
- 37 STA 36+10, 59.9' RT MAN TA 6 DIA TIF CL RIM = 795.13 INV = 789.97 (N) INV = 789.87 (W) INV = 789.86 (E)
- 37A STA 36+69, 62.1' RT STORM WATER TRTMT SYS INV = 790.03 (S) INV = 790.03 (N)
- 38 STA 36+10, 74.6' RT PRC FLAR END SEC 42 W/ GRATING INV = 789.85 (W)
- 39 SEE STORMWATER MANAGEMENT PLAN
- 40 SEE STORMWATER MANAGEMENT PLAN
- 41B SEE STORMWATER MANAGEMENT PLAN

QUENTIN ROAD



	450 E Devon Ave, Suite 300 Itasca, Illinois 60143 Tel: 630.773.3900 Fax: 630.773.3975 www.civiltechinc.com	DESIGNED - JRR DRAWN - JRR CHECKED - RTM DATE - 10/24/2011	REVISED - REVISED - REVISED - REVISED -	STATE OF ILLINOIS DEPARTMENT OF TRANSPORTATION	VERT. 0 HORIZ. 0	SCALES 5 10 20 40	DRAINAGE AND UTILITY SHEET NO. 4 OF 14 SHEETS STA. 33+00 TO STA. 38+00	F.A.U. R.T.E. 364 SECTION 02-00051-08-WR COUNTY LAKE TOTAL SHEETS 188 SHEET NO. 75 CONTRACT NO. 63649 FED. ROAD DIST. NO. 1 ILLINOIS FED. AID PROJECT
--	---	---	--	---	---------------------	-------------------------	--	---