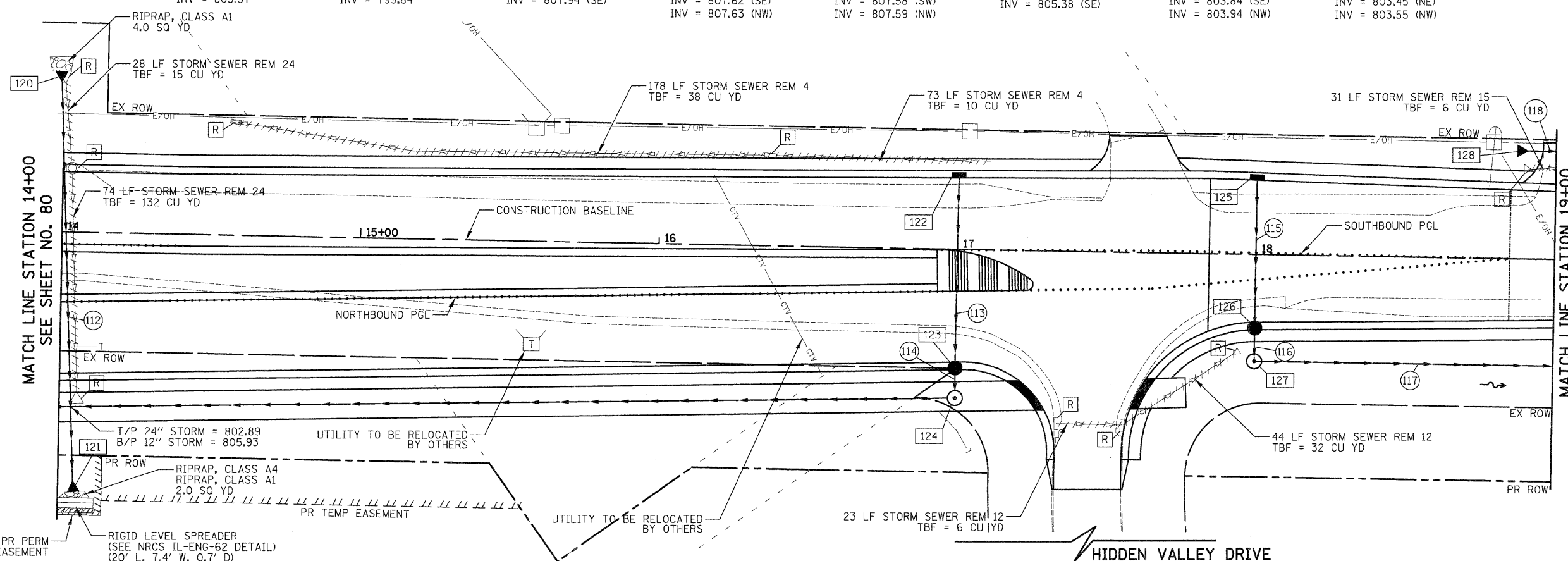
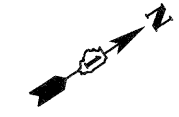


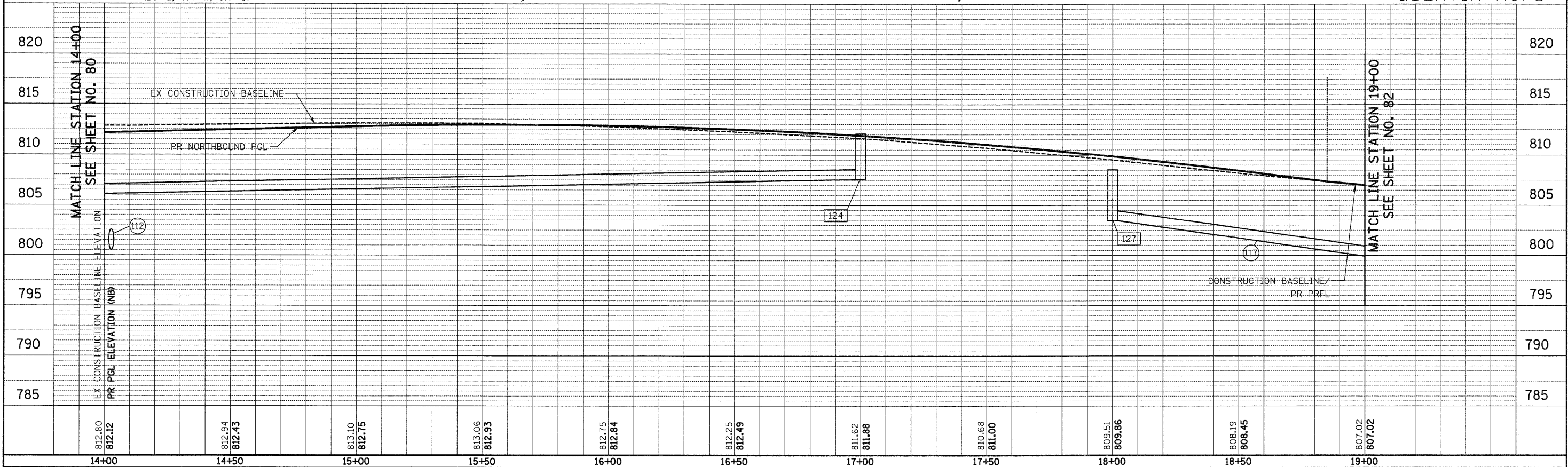
|                   |  |
|-------------------|--|
| DATE              |  |
| BY                |  |
| FINAL SURVEY      |  |
| NOTED             |  |
| PLOTTED           |  |
| TEMPLATE          |  |
| NO. AREAS CHECKED |  |

|                   |  |
|-------------------|--|
| DATE              |  |
| BY                |  |
| ORIGINAL SURVEY   |  |
| NOTED             |  |
| PLOTTED           |  |
| TEMPLATE          |  |
| NO. AREAS CHECKED |  |

|  |  |  |   |  |  |   |  |  |
|--|--|--|---|--|--|---|--|--|
| 120 STA 14+00, 53.6' LT<br>PRC FLAR END SEC 24<br>W/ GRATING<br>INV = 803.57 | 121 STA 14+04.4, 87.2' RT<br>PRC FLAR END SEC 24<br>W/ GRATING<br>INV = 799.84 | 122 STA 17+00, 24.9' LT<br>INLETS TA T24F&G<br>RIM = 811.39<br>INV = 807.94 (SE) | 123 STA 17+00, 39.9' RT<br>CB TA 4 DIA T24F&G<br>RIM = 811.40<br>INV = 807.62 (SE)<br>INV = 807.63 (NW) | 124 STA 17+00, 50.0' RT<br>MAN TA 4 DIA T1F CL<br>RIM = 812.06<br>INV = 807.58 (SW)<br>INV = 807.59 (NW) | 125 STA 18+00, 25.9' LT<br>INLETS TA T24F&G<br>RIM = 809.38<br>INV = 805.38 (SE) | 126 STA 18+00, 24.7' RT<br>CB TA 4 DIA T24F&G<br>RIM = 809.63<br>INV = 803.84 (SE)<br>INV = 803.94 (NW) | 127 STA 18+00, 36.0' RT<br>MAN TA 4 DIA T1F CL<br>RIM = 808.53<br>INV = 803.45 (NE)<br>INV = 803.55 (NW) | 128 STA 18+87, 36.0' LT<br>PRC FLAR END SEC 15<br>INV = 803.16 |
|--|--|--|---|--|--|---|--|--|



- 112 129' - STORM SEW CL A 1, 24" @ 2.80%  
TBF = 105 CU YD.
- 113 62' - STORM SEW CL A 1, 12" @ 0.50%  
TBF = 9 CU YD
- 114 7' - STORM SEW CL A 1, 12" @ 0.50%  
TBF = 1 CU YD
- 115 48' - STORM SEW CL A 1, 12" @ 3.00%  
TBF = 12 CU YD
- 116 8' - STORM SEW CL A 1, 12" @ 3.60%  
TBF = 2 CU YD
- 117 126' - STORM SEW CL A 1, 12" @ 3.60%
- 118 26' - STORM SEW CL A 1, 15" @ 0.50%  
TBF = 3 CU YD



|        |        |        |        |        |        |        |        |        |        |        |
|--------|--------|--------|--------|--------|--------|--------|--------|--------|--------|--------|
| 14+00  | 14+50  | 15+00  | 15+50  | 16+00  | 16+50  | 17+00  | 17+50  | 18+00  | 18+50  | 19+00  |
| 812.80 | 812.94 | 813.10 | 813.06 | 812.75 | 812.84 | 812.25 | 811.62 | 810.68 | 809.51 | 807.02 |
| 812.12 | 812.43 | 812.75 | 812.93 | 812.84 | 812.49 | 811.88 | 811.00 | 809.86 | 808.45 | 807.02 |

**CIVILTECH**  
 450 E Devon Ave, Suite 300  
 Itasca, Illinois 60143  
 Tel: 630.773.3900 Fax: 630.773.3975  
 www.civiltechinc.com

DESIGNED - JRR  
 DRAWN - JRR  
 CHECKED - RTM  
 DATE - 10/24/2011

REVISED -  
 REVISED -  
 REVISED -  
 REVISED -

**STATE OF ILLINOIS  
 DEPARTMENT OF TRANSPORTATION**

VERT. 0 5 10  
 HORIZ. 0 20 40

SCALES

**DRAINAGE AND UTILITY**

SHEET NO. 10 OF 14 SHEETS STA. 14+00 TO STA. 19+00

|   |                |        |              |           |
|---|----------------|--------|--------------|-----------|
| F.A.U. RTE.                                       | SECTION        | COUNTY | TOTAL SHEETS | SHEET NO. |
| 364   | 02-00051-08-WR | LAKE   | 188          | 81        |
| CONTRACT NO. 63649                                |                |        |              |           |
| FED. ROAD DIST. NO. 1 [ILLINOIS] FED. AID PROJECT |                |        |              |           |