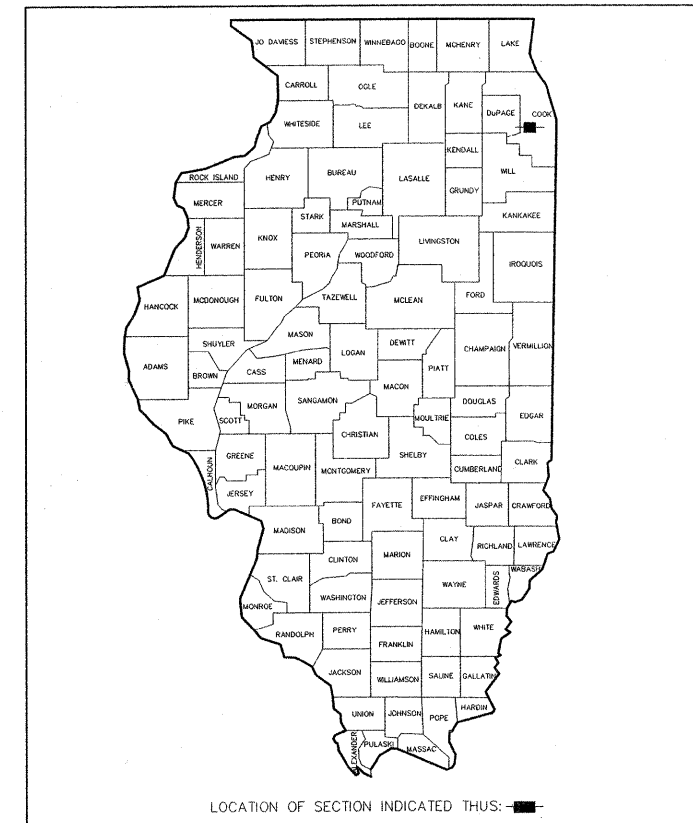


STATE OF ILLINOIS
DEPARTMENT OF TRANSPORTATION
DIVISION OF HIGHWAYS
PLANS FOR PROPOSED
FEDERAL AID HIGHWAY

FAU RTE	SECTION	COUNTY	TOTAL SHEETS	SHEET NO.
4307	11-00048-00-RS	WILL	15	1
F.H.W.A. REG.		ILLINOIS PROJECT	M-9003(824)	

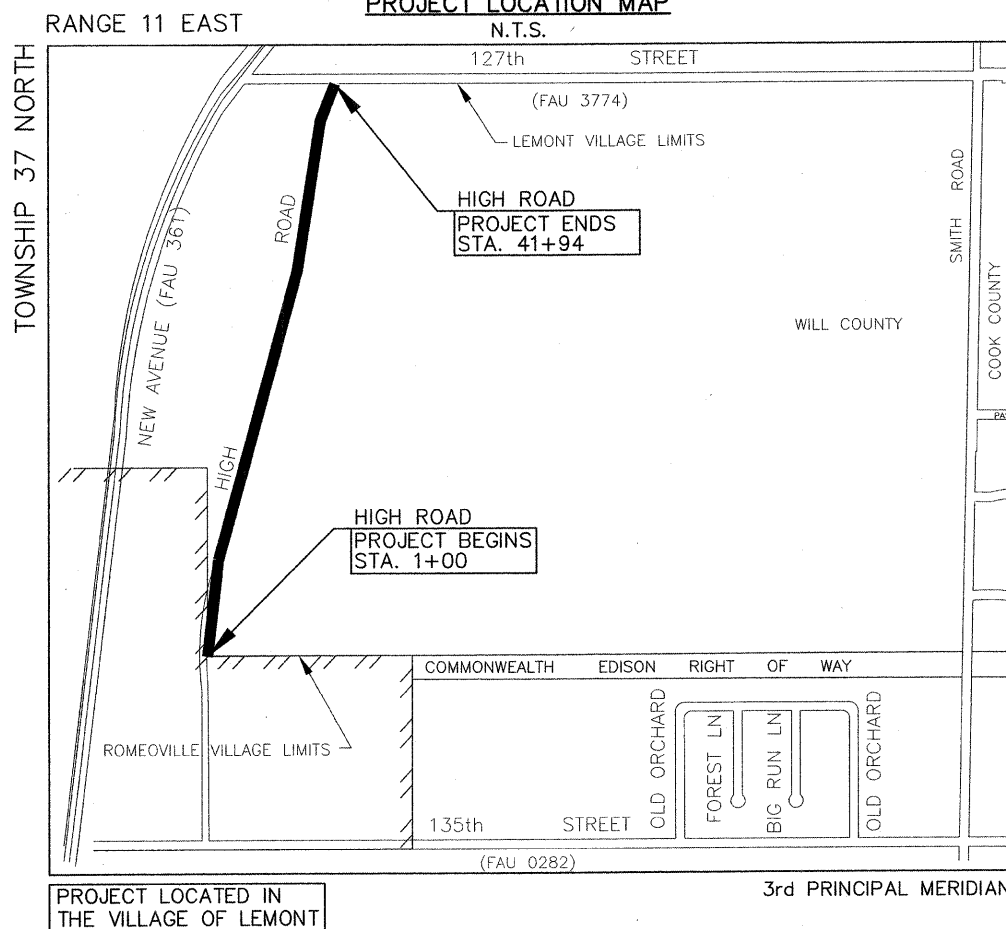
CONTRACT NO. 63704



LOCATION OF SECTION INDICATED THIS: ■

FAU 4307 HIGH ROAD
 0.25 MILES NORTH OF 135th STREET (FAU 0282)
 TO 127th STREET (FAU 3774)
 RESURFACING

SECTION 11-00048-00-RS
 PROJECT M-9003(824)
 VILLAGE OF LEMONT
 WILL COUNTY
 C-91-565-11
 PROJECT LOCATION MAP
 N.T.S.



PROJECT LOCATED IN THE VILLAGE OF LEMONT

■ DENOTES LOCATION OF IMPROVEMENT
 IN LEMONT TOWNSHIP
 LENGTH OF PROJECT

GROSS LENGTH OF PROJECT 4,094 FEET (0.78 MILES)
 NET LENGTH OF PROJECT 4,094 FEET (0.78 MILES)

INDEX OF SHEETS

- 1.) COVER SHEET, INDEX OF SHEETS, LOCATION MAP, INDEX OF HIGHWAY STANDARDS
- 2.) GENERAL CONSTRUCTION NOTES, SUMMARY OF QUANTITIES
- 3.) TYPICAL SECTIONS, HOT-MIX ASPHALT MIXTURE REQUIREMENTS
- 4.) PLAN: HIGH ROAD (RESURFACING)
 - 0.25 MILES NORTH OF 135th STREET (FAU 0282) TO STA. 21+00
- 5.) PLAN: HIGH ROAD (RESURFACING)
 - STA. 21+00 TO TO 127th STREET (FAU 3774)
- 6.) PLAN: HIGH ROAD (PAVEMENT MARKINGS)
 - 0.25 MILES NORTH OF 135th STREET (FAU 0282) TO STA. 21+00
- 7.) PLAN: HIGH ROAD (PAVEMENT MARKINGS)
 - STA. 21+00 TO TO 127th STREET (FAU 3774)

INDEX OF DISTRICT 1 STANDARDS

- 8.) BD-22 PAVEMENT PATCHING FOR HMA SURFACED PAVEMENT
- 9.) BD-32 BUTT JOINT AND HMA TAPER DETAILS
- 10.) TC-10 TRAFFIC CONTROL & PROTECTION FOR SIDE ROADS, INTERSECTIONS, & DRIVEWAYS
- 11.) TC-11 TYPICAL APPLICATIONS RAISED REFLECTIVE PAVEMENT MARKINGS (SNOW PLOW RESISTANT)
- 12.) TC-13 DISTRICT ONE TYPICAL PAVEMENT MARKINGS
- 13.) TC-16 PAVEMENT MARKING LETTERS AND SYMBOLS FOR TRAFFIC STAGING
- 14.) TC-18 SIGNING FOR FLAGGING OPERATIONS AT WORK ZONE OPENINGS
- 15.) TC-22 ARTERIAL ROAD INFORMATION SIGN

INDEX OF HIGHWAY STANDARDS

- 000001-06 STANDARD SYMBOLS, ABBREVIATIONS, AND PATTERNS
- 442201-03 CLASS C AND D PATCHES
- 701301-04 LANE CLOSURE, 2L, 2W, SHORT TIME OPERATIONS
- 701311-03 LANE CLOSURE, 2L, 2W, MOVING OPERATIONS-DAY ONLY
- 701501-06 URBAN LANE CLOSURE, 2 L, 2 W UNDIVIDED
- 701901-02 TRAFFIC CONTROL DEVICES
- 780001-03 TYPICAL PAVEMENT MARKINGS
- 781001-03 RAISED REFLECTIVE PAVEMENT MARKERS

TRAFFIC DATA

ADT: HIGH ROAD EXISTING: 400 (2011)

DESIGN DESIGNATION:

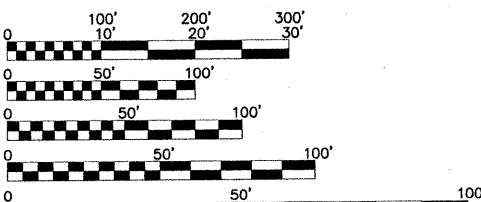
URBAN COLLECTOR

POSTED SPEED

35 MPH (EXISTING)

DESIGN SPEED

35 MPH (PROPOSED)



FULL SIZE PLANS HAVE BEEN PREPARED USING STANDARD ENGINEERING SCALES. REDUCED SIZED PLANS WILL NOT CONFORM TO STANDARD SCALES. IN MAKING MEASUREMENTS ON REDUCED PLANS, THE ABOVE SCALES MAY BE USED.

J.U.L.I.E.
 JOINT UTILITY LOCATION INFORMATION FOR EXCAVATION CALL 811

Frank Novotny & Associates, Inc.
 825 Midway Drive • Willowbrook, IL • 60527 • Telephone: (630) 887-8640 • Fax: (630) 887-0132
 Civil Engineers/Municipal Consultants ILLINOIS PROFESSIONAL DESIGN FIRM NO. 194-000828

FNA PROJECT NO. 11025 DRAWN/DESIGNED JFP/JLC CHECKED/APPROVED THK/JLC

R E V I S I O N S			
NO.	BY	DATE	DESCRIPTION
1	JLC	2-27-12	PER I.D.O.T. REVIEW

CONTRACT NO. 63704

STATE OF ILLINOIS
 DEPARTMENT OF TRANSPORTATION
 DIVISION OF HIGHWAYS

APPROVED March 7 2012

VILLAGE OF LEMONT Brian K. Reaves
 BRIAN K. REAVES, VILLAGE MAYOR

PASSED MARCH 29 2012

RELEASING FOR BID BASED ON LIMITED REVIEW C. Holt 3/30 2012
 DISTRICT 1 ENGINEER OF LOCAL ROADS & STREETS
 DEPUTY DIRECTOR OF HIGHWAYS, REGION 1 ENGINEER

James L. Cankar
 JAMES L. CANKAR, P.E.
 IL. P.E. NO. 062-036190
 EXPIRES 11-30-2013
3-29-2011
 DATE

**PRINTED BY THE AUTHORITY
 OF THE STATE OF ILLINOIS**

PROGRAM AND OFFICE ENGINEER: CHARLES F. RIDDLE, P.E. (847)705-4406 SCHAUMBURG, IL.