

F.A.U. RTE.	SECTION	COUNTY	TOTAL SHEETS	SHEET NO.
2678	12-00180-00-RS	DUPAGE	18	1

CONTRACT NO. 63708

**INDEX OF SHEETS**

- 1 COVER SHEET AND INDEX OF SHEETS
- 2 GENERAL NOTES AND HIGHWAY STANDARDS
- 3 SUMMARY OF QUANTITIES
- 4 TYPICAL SECTIONS
- 5-6 IMPROVEMENT PLANS
- 7-8 PAVEMENT MARKING PLANS
- 9 RECTANGULAR RAPID FLASHING BEACON DETAILS
- 10 BD-08 DETAILS FOR FRAMES AND LIDS ADJUSTMENT WITH MILLING
- 11 BD-22 PAVEMENT PATCHING FOR HMA SURFACED PAVEMENT
- 12 BD-32 BUTT JOINT AND HMA TAPER DETAILS
- 13 TC-10 TRAFFIC CONTROL AND PROTECTION FOR SIDE ROADS, INTERSECTIONS AND DRIVEWAYS
- 14 TC-13 DISTRICT ONE TYPICAL PAVEMENT MARKINGS
- 15 TC-16 PAVEMENT MARKING LETTERS AND SYMBOLS FOR TRAFFIC STAGING
- 16 TC-22 ARTERIAL ROAD INFORMATION SIGN
- 17 TC-26 DRIVEWAY ENTRANCE SIGNING
- 18 TS-07 DISTRICT 1 - DETECTOR LOOP INSTALLATION DETAILS FOR ROADWAY RESURFACING

**FOR INDEX OF HIGHWAY STANDARDS, SEE SHEET NO. 2**

**TRAFFIC DATA**

ADT:  
YORK STREET 15,400 VPD (2008) 20,000 VPD (2040)

**POSTED SPEED**

30 MPH (EXISTING)  
30 MPH (PROPOSED)

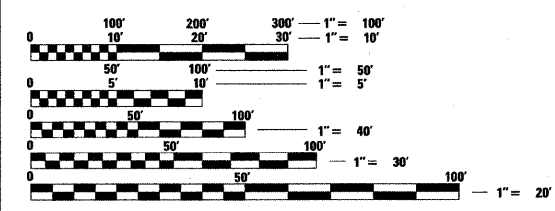
**DESIGN SPEED**

35 MPH (EXISTING)  
35 MPH (PROPOSED)

**FUNCTIONAL CLASSIFICATION**

COLLECTOR - URBAN

PROJECT IS LOCATED IN THE CITY OF ELMHURST



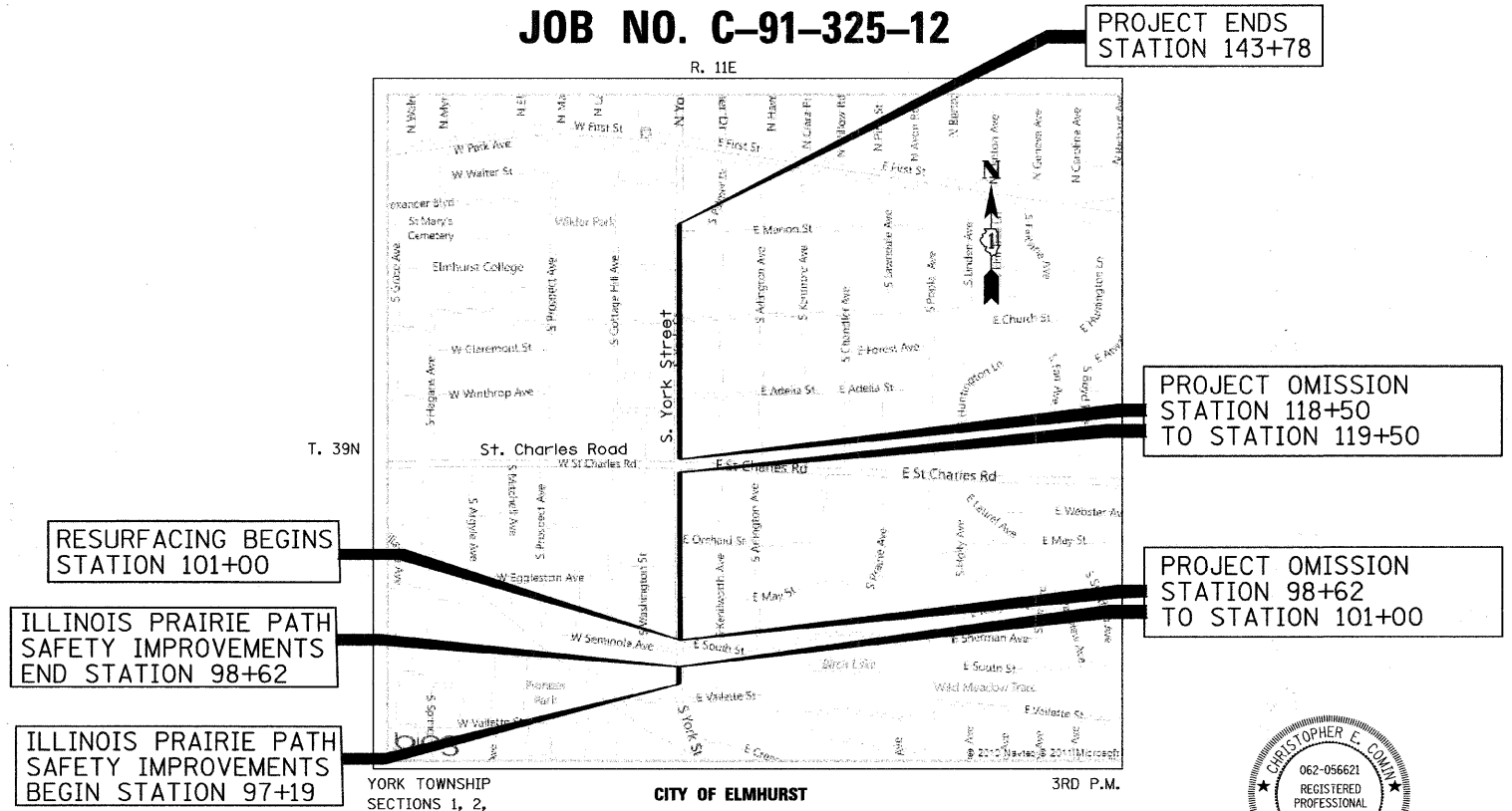
FULL SIZE PLANS HAVE BEEN PREPARED USING STANDARD ENGINEERING SCALES. REDUCED SIZED PLANS WILL NOT CONFORM TO STANDARD SCALES. IN MAKING MEASUREMENTS ON REDUCED PLANS, THE ABOVE SCALES MAY BE USED.

J.U.L.I.E.  
JOINT UTILITY LOCATION INFORMATION FOR EXCAVATION  
1-800-892-0123  
OR 811

**CONTRACT NO. 63708**

STATE OF ILLINOIS  
DEPARTMENT OF TRANSPORTATION  
DIVISION OF HIGHWAYS  
**PLANS FOR PROPOSED  
FEDERAL AID HIGHWAY PROJECT**  
FAU ROUTE 2678 (YORK STREET)  
FAU 3824 (VALLETTE STREET) TO FAU 2678 (S ROBERT PALMER DRIVE)  
RESURFACING

SECTION 12-00180-00-RS  
PROJECT M-9003(984)  
CITY OF ELMHURST  
DUPAGE COUNTY  
JOB NO. C-91-325-12

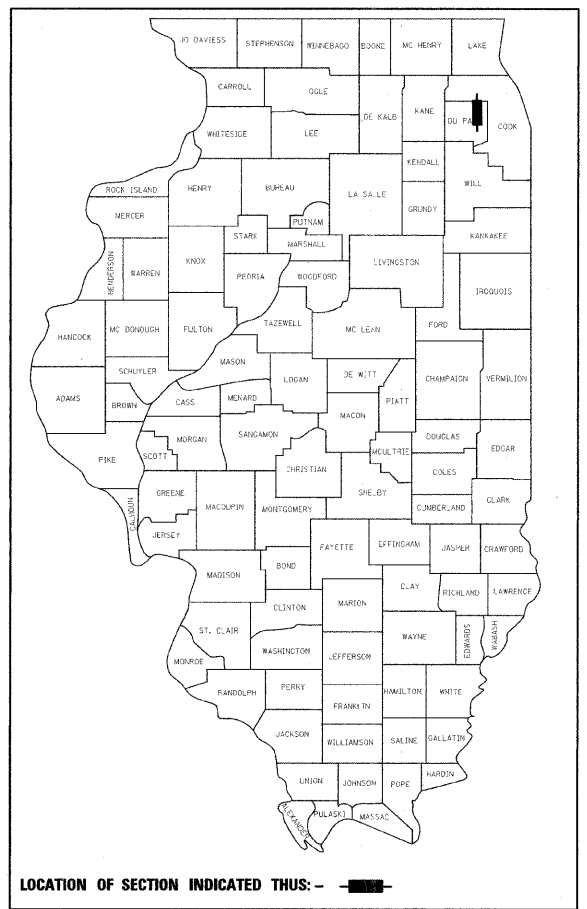


**LOCATION MAP**  
NOT TO SCALE

PROJECT LENGTH (GROSS /NET)  
YORK STREET RESURFACING 4,278 FT (0.81 MILES) (GROSS)  
ILLINOIS PRAIRIE PATH SAFETY IMPROVEMENTS 143 FEET (0.03 MILES) (GROSS)  
OMISSION = 100 FT (0.02 MILES)  
OMISSION = 238 FT (0.05 MILES)  
TOTAL PROJECT LENGTH = 4,321 (0.82 MILES) (NET)



*Christopher E. Comin* 04/05/12  
CHRISTOPHER E. COMIN, P.E.  
NO. 062-056621  
EXP. DATE 11/30/13



STATE OF ILLINOIS  
DEPARTMENT OF TRANSPORTATION  
DIVISION OF HIGHWAYS

APPROVED *APRIL 4*, 2012  
*Law Tibens*  
CITY OF ELMHURST, CITY ENGINEER

PASSED *APRIL 6*, 2012  
*Chad C. Hart*  
DISTRICT 1 ENGINEER OF LOCAL ROADS & STREETS

RELEASING FOR BID  
BASED ON LIMITED  
REVIEW *APRIL 6*, 2012  
*Diana M. O'Keefe*  
DEPUTY DIRECTOR OF HIGHWAYS, REGION 1 ENGINEER

**PRINTED BY THE AUTHORITY  
OF THE STATE OF ILLINOIS**

1475 EAST WOODFIELD ROAD, SUITE 600  
SCHAMBERG, ILLINOIS 60173  
PROGRAM AND OFFICE ENGINEER: CHARLES F. RIDDLE, P.E., (847) 705-4406, SCHAMBERG, IL  
TranSystems