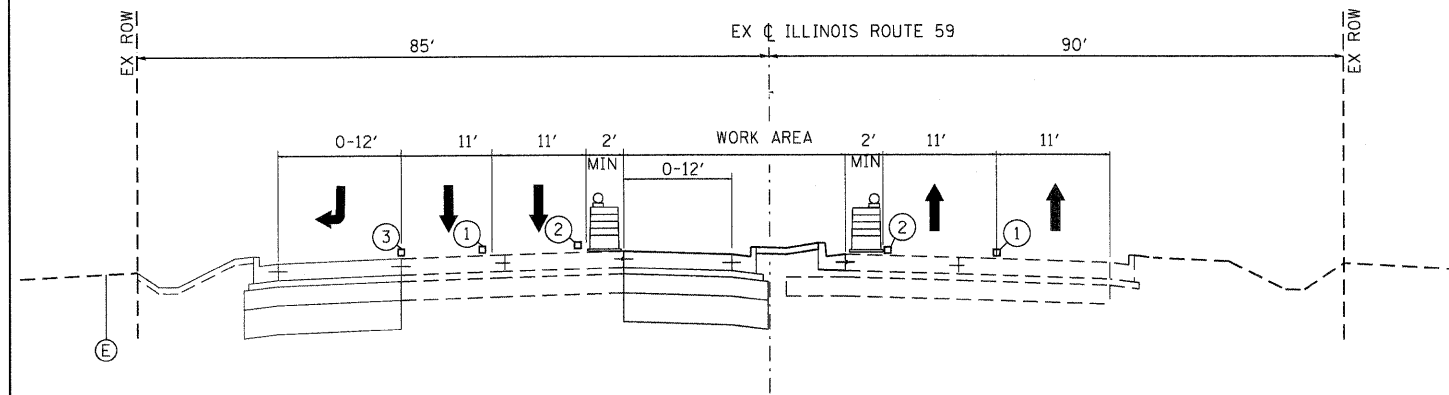
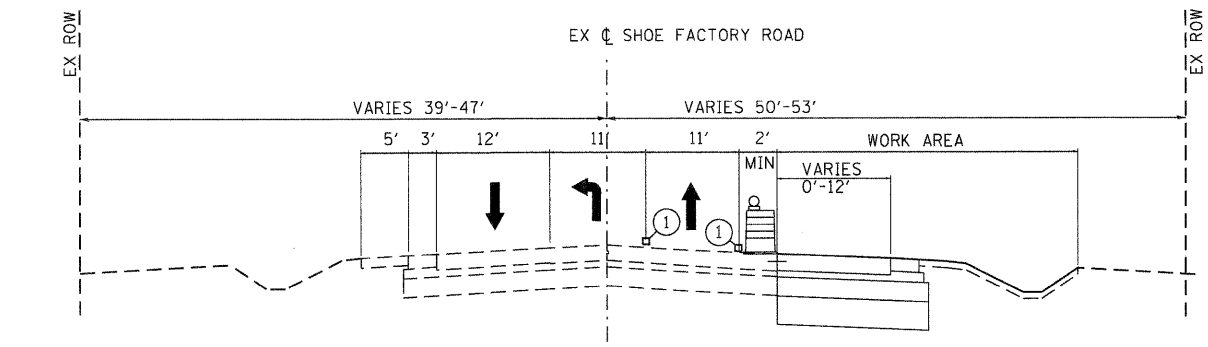


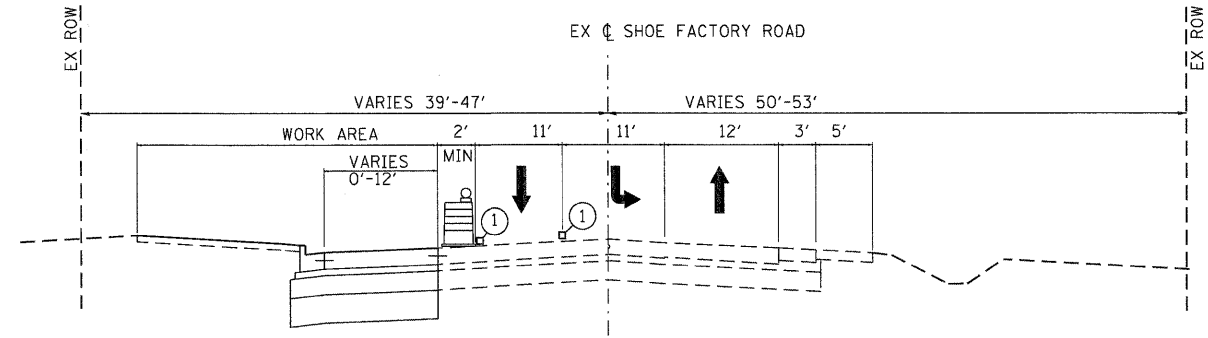
**ILLINOIS ROUTE 59**  
**STAGE 1 AND 1A: CONSTRUCT OUTSIDE LANES**  
 STA. 507+49 TO STA. 511+46  
 STA. 512+51 TO STA. 517+72



**ILLINOIS ROUTE 59**  
**STAGE 2: CONSTRUCT MEDIAN**  
 STA. 514+25 TO STA. 517+75



**SHOE FACTORY ROAD**  
**STAGE 1**  
 STA. 107+85 TO STA. 112+12



**SHOE FACTORY ROAD**  
**STAGE 2**  
 STA. 113+20 TO STA. 118+11

- LEGEND**
- DIRECTION OF TRAFFIC
  - PROPOSED DRUM BARRICADE WITH BI-DIRECTIONAL STEADY BURNING LIGHT 50 FT C-C
  - TEMPORARY PAVEMENT MARKING LINE 4" (WHITE)
  - TEMPORARY PAVEMENT MARKING LINE 4" (YELLOW)
  - TEMPORARY PAVEMENT MARKING LINE 6" (WHITE)

**GENERAL NOTES**

THE TRAFFIC CONTROL DETAILS AND NOTES SHALL SERVE AS A GUIDE FOR SAFE DIVERSION OF TRAFFIC DURING EXECUTION OF THIS CONTRACT. HOWEVER, THE CONTRACTOR MAY MODIFY THE TRAFFIC CONTROL PLANS TO MEET CONSTRUCTION NEEDS BUT NOT AT THE EXPENSE OF PUBLIC SAFETY OR CONVENIENCE. ANY CHANGES TO THE TRAFFIC CONTROL PLAN SHALL BE SUBMITTED TO THE ENGINEER FOR APPROVAL.

THE ENGINEER SHALL BE INFORMED 72 HOURS IN ADVANCE OF ANY CHANGE TO THE STAGING PLANS.

THE RESIDENT ENGINEER SHALL CONTACT THE IDOT TRAFFIC CONTROL SUPERVISOR AT (847) 705-4470 A MINIMUM OF 72 HOURS PRIOR TO THE PLACEMENT OF ANY TEMPORARY TRAFFIC CONTROL DEVICES.

CONTRACTOR SHALL MAINTAIN A MINIMUM OF ONE THROUGH LANE IN EACH DIRECTION THROUGHOUT THE PROJECT AREA AT ALL TIMES.

TRAFFIC CONDITIONS, ACCIDENTS, AND OTHER UNFORESEEN EMERGENCY CONDITIONS MAY REQUIRE THE ENGINEER TO RESTRICT, MODIFY, OR REMOVE LANE CLOSURES OR CHANNELIZATION SHOWN IN THE PLANS. THE CONTRACTOR SHALL MAKE THE NECESSARY ADJUSTMENTS AS DIRECTED BY THE ENGINEER WITHOUT DELAY. THE CONTRACTOR SHALL RESPOND TO ANY REQUEST MADE BY THE ENGINEER FOR CORRECTION WITHIN TWO HOURS FROM THE TIME OF NOTIFICATION.

ALL OF THE TRAFFIC CONTROL DEVICES SHALL BE IN PLACE BEFORE CONSTRUCTION IS STARTED. ALL TRAFFIC CONTROL DEVICES SHALL BE IN PLACE AT THE BEGINNING OF EACH STAGE, AND SHALL BE MAINTAINED FOR THE DURATION OF THAT STAGE UNLESS OTHERWISE DIRECTED BY THE ENGINEER.

THE CONTRACTOR SHALL BE REQUIRED TO MAINTAIN ACCESS TO ENTRANCES AS INDICATED ON THE PLANS WITHIN THE PROJECT LIMITS. THIS WORK IS TO BE PAID FOR AT THE CONTRACT UNIT PRICE PER EACH FOR TEMPORARY ACCESS (COMMERCIAL ENTRANCE).

**SIGNS**

TRAFFIC CONTROL DEPICTED ON THE HIGHWAY STANDARDS IS THE MINIMUM REQUIREMENT. OTHER WORK OR SIGNING MAY BE REQUIRED BY THE ENGINEER.

ALL EXISTING SIGNS THAT CONFLICT WITH THE TRAFFIC CONTROL PLAN SHALL BE COVERED OR REMOVED IN ACCORDANCE WITH ARTICLE 107.25 OF THE STANDARD SPECIFICATIONS.

THE CONTRACTOR SHALL PROVIDE, INSTALL, MAINTAIN AND REMOVE ALL SIGNS AND SIGN SUPPORTS REQUIRED FOR TRAFFIC CONTROL AND PROTECTION. THIS WORK SHALL NOT BE PAID FOR SEPARATELY BUT SHALL BE INCLUDED IN THE CONTRACT UNIT LUMP SUM PRICES PER THE TRAFFIC CONTROL AND PROTECTION STANDARDS.

TEMPORARY SIGNING SHALL CONFORM TO THE APPLICABLE STANDARDS INCLUDED IN THE SPECIAL PROVISIONS AND CONTRACT PLANS OR AS DIRECTED BY THE ENGINEER. ALL TEMPORARY INFORMATION SIGNS SHALL BE PAID FOR SEPARATELY AT THE UNIT PER SQUARE FOOT FOR "TEMPORARY INFORMATION SIGNING".

THE CONTRACTOR SHALL PLACE A CHANGEABLE MESSAGE SIGN AT THE BEGINNING OF THE PROJECT ON BOTH LEGS OF IL ROUTE 59 AND SHOE FACTORY ROAD. SIGNS SHALL INFORM MOTORISTS OF UPCOMING CONSTRUCTION ACTIVITIES. THE MESSAGE SIGNS WITH THE APPROPRIATE INFORMATION SHALL BE IN PLACE TWO WEEKS BEFORE START OF CONSTRUCTION ACTIVITY. THIS WORK IS TO BE PAID FOR AT THE CONTRACT UNIT PRICE PER CALENDAR MONTH FOR "CHANGEABLE MESSAGE SIGN".

**BARRICADES**

TYPE II BARRICADES EQUIPPED WITH MONO-DIRECTIONAL STEADY BURN LIGHTS SHALL BE PLACED ALONG THE ROADWAY AS INDICATED ON THE PLANS OR AS DIRECTED BY THE ENGINEER. TYPE II BARRICADES WITH DIRECTIONAL ARROWS SHALL BE PLACED AT LANE SHIFTS (TAPER SECTIONS) AS INDICATED ON THE PLANS OR DIRECTED BY THE ENGINEER. ALL TYPE II BARRICADES SHALL BE NON-METALLIC.

BARRICADES: THE CONTRACTOR SHALL PROVIDE AND INSTALL TWO (2) WEIGHTED SANDBAGS ON EACH TYPE I OR TYPE II BARRICADE USED - ONE (1) WEIGHTED SAND BAG ACROSS EACH BOTTOM RAIL.

EXISTING TRAFFIC CONTROL DEVICES WITHIN THE LIMITS OF CONSTRUCTION ARE TO BE PROTECTED FROM DAMAGE BY THE CONTRACTOR. ANY DAMAGED SIGNS CAUSED BY HIS WORK SHALL BE REPLACED BY THE CONTRACTOR.

CHANNELIZING DEVICES ARE TO BE PLACED AT SAME LEVEL AS TRAVELING LANE OR SHOULDER PROFILE.

**PAVEMENT MARKING**

ALL TEMPORARY PAVEMENT MARKINGS PROPOSED WITHIN THE WORK AREA SHALL BE COMPLETED PRIOR TO THE CONSTRUCTION PHASE CHANGE.

THE REMOVAL OF ALL PAVEMENT MARKING ON PCC PAVEMENT MUST BE DONE USING WATER BLASTING WITH VACUUM RECOVERY, AND IT WILL BE PAID AS "PAVEMENT MARKING REMOVAL".

ALL PAVEMENT MARKINGS CONFLICTING WITH REVISED TRAFFIC PATTERNS SHALL BE REMOVED. TYPE III MARKING TAPE SHALL BE USED ON THE FINAL WEARING SURFACE OR ON THE EXISTING PAVEMENT TO REMAIN WHEN THE TEMPORARY PAVEMENT MARKING WILL CONFLICT WITH THE PERMANENT PAVEMENT MARKING SUCH AS ON TAPERS OR LANE SHIFTS.

**OTHER**

ANY SAWCUTTING OF THE EXISTING PAVEMENT FOR STAGE CONSTRUCTION SHALL BE INCLUDED IN THE CONTRACT UNIT PRICE PER SQUARE YARD FOR "PAVEMENT REMOVAL".

**SEQUENCE OF CONSTRUCTION**

- PRE-STAGE**
- CONSTRUCTION**
- PLACE TRAFFIC CONTROL ADVANCE SIGNING.
  - REMOVE EXISTING PAVEMENT MARKINGS IN CONFLICT WITH STAGE I MAINTENANCE OF TRAFFIC STRIPING. COVER/REMOVE CONFLICTING EXISTING SIGNS LOCATED ALONG THE MAINLINE. RELOCATE EXISTING SIGNS AS NEEDED.
- MAINTENANCE OF TRAFFIC**
- MAINTAIN THE EXISTING TRAFFIC CONFIGURATION.
- STAGE 1**
- CONSTRUCTION**
- PLACE STAGE 1 TRAFFIC CONTROL DEVICES AND TEMPORARY PAVEMENT MARKINGS.
  - INSTALL DRAINAGE STRUCTURES AND STORM SEWER AT LOCATIONS SHOWN IN THE PLANS.
  - CONSTRUCT THE PROPOSED PCC PAVEMENT PAVEMENT. CONSTRUCT THE CURB AND GUTTER.
- MAINTENANCE OF TRAFFIC**
- MAINTAIN TWO LANES OF TRAFFIC.
  - TRAFFIC WILL BE SHIFTED FOR STAGE 1 CONSTRUCTION AND WILL UTILIZE THE EXISTING PAVEMENT.
- STAGE 2**
- CONSTRUCTION**
- INSTALL STAGE 2 TRAFFIC CONTROL DEVICES AND TEMPORARY PAVEMENT MARKINGS.
  - INSTALL DRAINAGE STRUCTURES AND STORM SEWER AT LOCATIONS SHOWN IN THE PLANS.
  - CONSTRUCT THE PROPOSED PCC PAVEMENT PAVEMENT. CONSTRUCT THE CURB AND GUTTER.
- MAINTENANCE OF TRAFFIC**
- MAINTAIN TWO LANES OF TRAFFIC.
  - TRAFFIC WILL BE SHIFTED FOR STAGE 2 CONSTRUCTION AND WILL UTILIZE EXISTING PAVEMENT.
- STAGE 3**
- CONSTRUCTION**
- COMPLETE REMAINING RESTORATION.
  - INSTALL PERMANENT PAVEMENT MARKINGS.
- MAINTENANCE OF TRAFFIC**
- MAINTAIN MINIMUM OF TWO LANES OF TRAFFIC.

COMPANY NAME: HRGreen  
 PROJECT CONTACT: JRM  
 DATE PLOTTED: 4/5/2012 5:03:19 PM  
 PLOT SCALE: N.T.S.  
 PLOT DRIVER: JRM  
 PLOT TABLE: Standard-Trans.tbl



USER NAME = jrm1hst	DESIGNED - JRM	REVISED -
PLOT SCALE = N.T.S.	DRAWN -	REVISED -
PLOT DATE = 4/5/2012	CHECKED - TEH	REVISED -
	DATE - 4/5/12	REVISED -

**STATE OF ILLINOIS**  
**DEPARTMENT OF TRANSPORTATION**

<b>SUGGESTED MAINTENANCE OF TRAFFIC</b>	
SCALE: N.T.S.	SHEET NO. 1 OF 1 SHEETS STA. TO STA.

F.A.P. RTE.	SECTION	COUNTY	TOTAL SHEETS	SHEET NO.
338	10-00084-00-CH	COOK	63	9
CONTRACT NO. 63711			ILLINOIS FED. AID PROJECT	