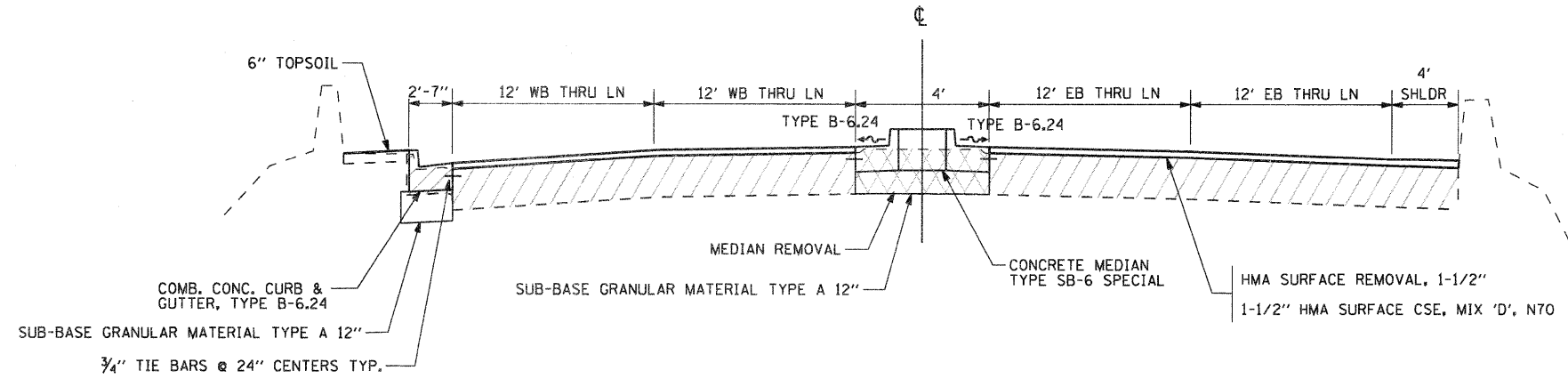
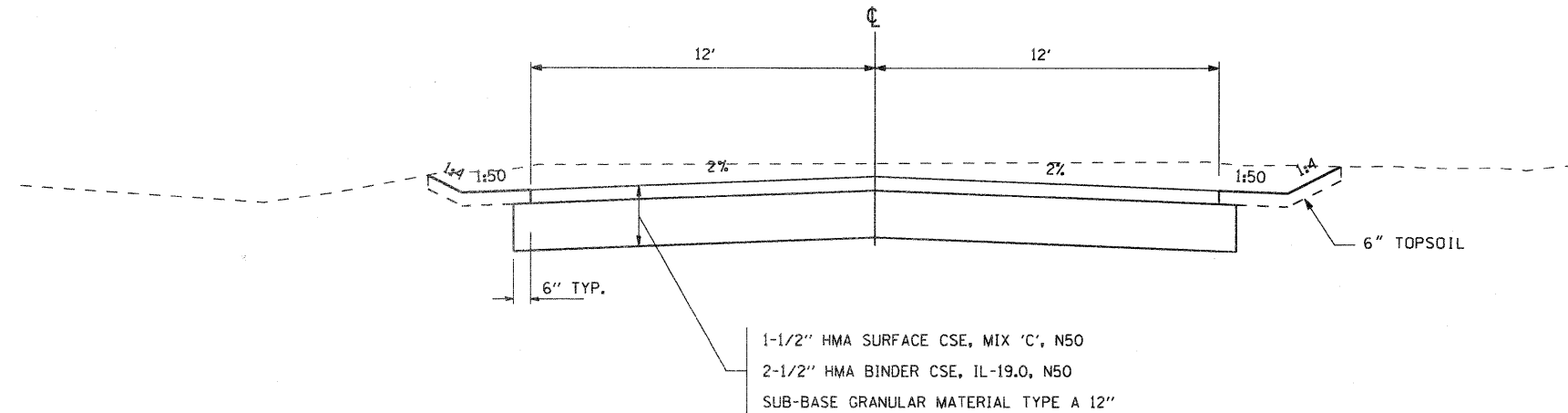


HARRISON AVENUE
 (RESURFACE BRIDGE APPROACH PAVEMENT)
 STA. 41+04.18 - STA. 41+21.11



TEMPORARY SHELL ACCESS ROAD
 STA. 2000+00.00 - STA. 2002+43.36



STRUCTURAL DESIGN TRAFFIC: YEAR 2020
 PV= 19,275 SU= 830 MU= 620

HIGHWAY CLASSIFICATION:
 MAJOR PRINCIPAL URBAN/RURAL ARTERIAL

PERCENT OF STRUCTURAL DESIGN TRAFFIC
 IN DESIGN LANE: P= 32% S= 45% M= 45%

TRAFFIC FACTOR: ACTUAL TF= 4.96

SUBGRADE SUPPORT RATING: SSR= POOR
 (STA. RANGE = ALL)

HMA MIXTURE APPLICATION RATE = 112 LB/SY/IN

FILE NAME =	USER NAME = pstp	DESIGNED -	REVISED -	STATE OF ILLINOIS DEPARTMENT OF TRANSPORTATION	FAP 742 (IL 2) TYPICAL SECTIONS	F.A.P. RTE.	SECTION	COUNTY	TOTAL SHEETS	SHEET NO.
G:\2010\TRANS\BI01001\DDN\Typicals\001500-1\typical.dgn		DRAWN -	REVISED -			734	34R	WINNEBAGO	491	31
PLOT SCALE = 10.0000 "/>										
PLOT DATE = 1/25/2012		CHECKED -	REVISED -			SCALE: N/A		SHEET NO. OF SHEETS		STA. TO STA.
		DATE -	REVISED -	ILLINOIS FED. AID PROJECT						