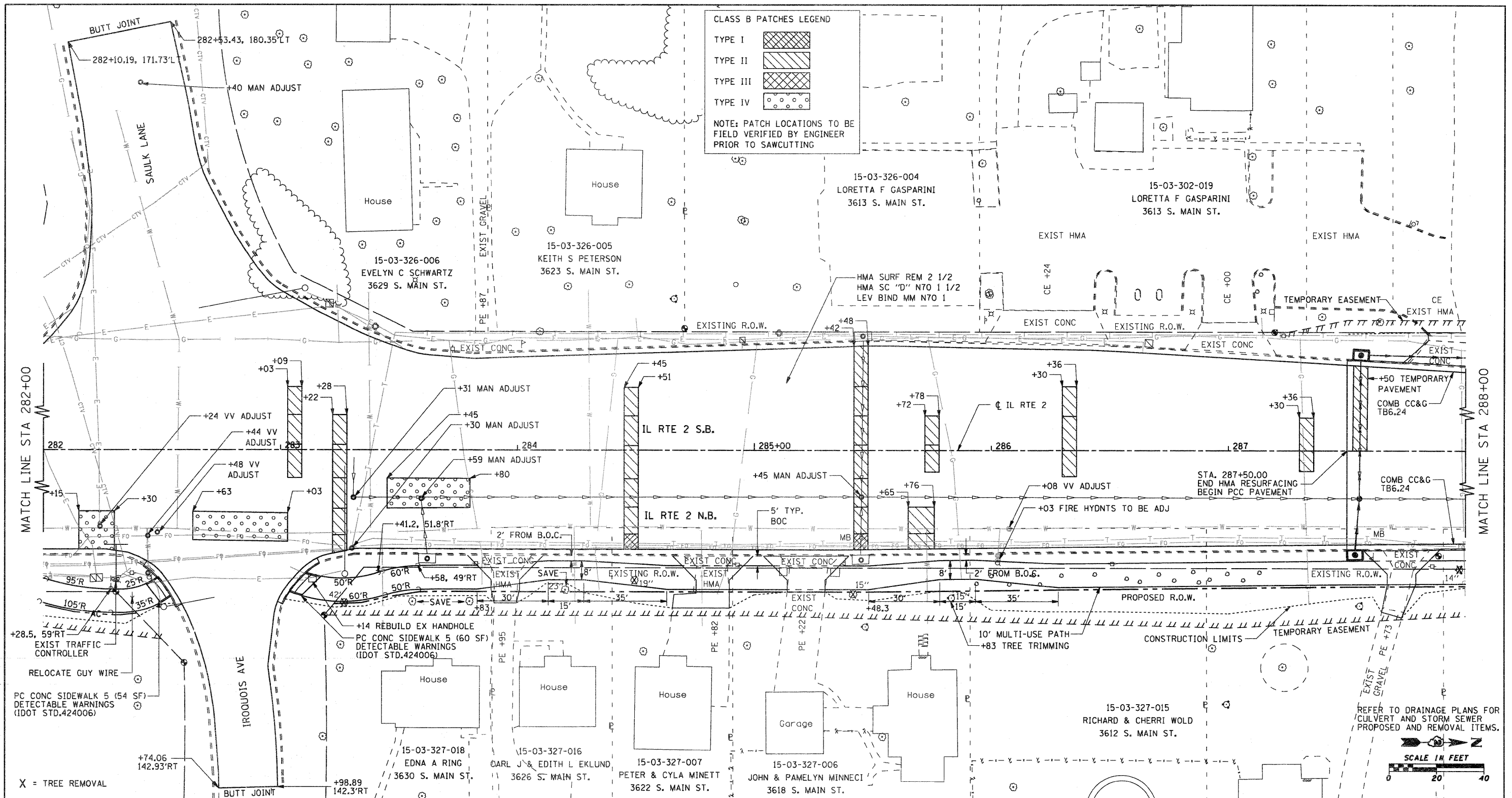


PLAN	SURVEYED	DATE
	PLOTTED	
	NOTED	
	CHECKED	
	BY	
	NO.	

PROFILE	SURVEYED	DATE
	PLOTTED	
	NOTED	
	CHECKED	
	BY	
	NO.	



740	STAGE 1 STA. 282+00.00 TO STA. 288+00.00 EARTH EXC. = 485 CU.YDS. EMBANK = 3 CU.YDS. WASTE = 360 CU.YDS.															740																		
735	STAGE 2 STA. 282+00.00 TO STA. 288+00.00 EARTH EXC. = 54 CU.YDS. EMBANK = 0 CU.YDS. WASTE = 41 CU.YDS.															735																		
741.74	741.74	741.74	741.74	741.71	741.65	742.00	741.96	741.96	741.97	741.96	741.95	741.93	741.92	741.90	741.86	741.83	741.80	741.78	741.76	741.74	741.61	741.61	741.60	741.60	741.59	741.59	741.58	741.58	741.56	741.56	741.53	741.53	741.50	741.50

FILE NAME = G:\2010\TRANS\B107081\DDN\Plan and Profile\IL2\015000\PLN12.dgn	USER NAME = petp	DESIGNED - CJS	REVISED -	STATE OF ILLINOIS DEPARTMENT OF TRANSPORTATION	F.A.P. RTE. = 742	SECTION = 34R	COUNTY = WINNEBAGO	TOTAL SHEETS = 491	SHEET NO. = 69
PLLOT SCALE = 20.0000' / IN.	CHECKED - FJH	REVISIED -	SCALE: 1" = 20'		SHEET NO. OF SHEETS	STA. 282+00 TO STA. 288+00	ILLINOIS FED. AID PROJECT		
PLLOT DATE = 2/24/2012	DATE -	REVISIED -	FAP 742 (IL 2) PLAN AND PROFILE						
					CONTRACT NO. 64515				