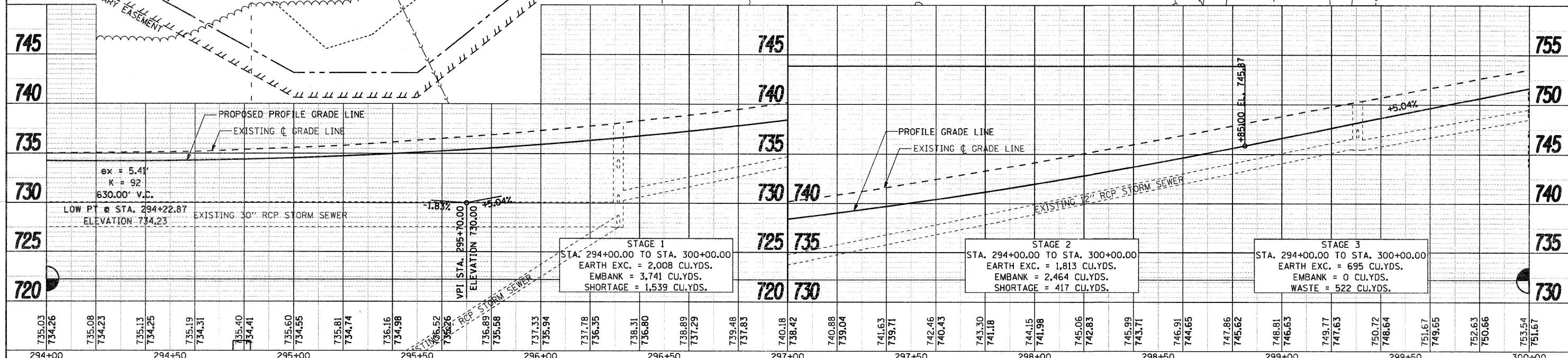
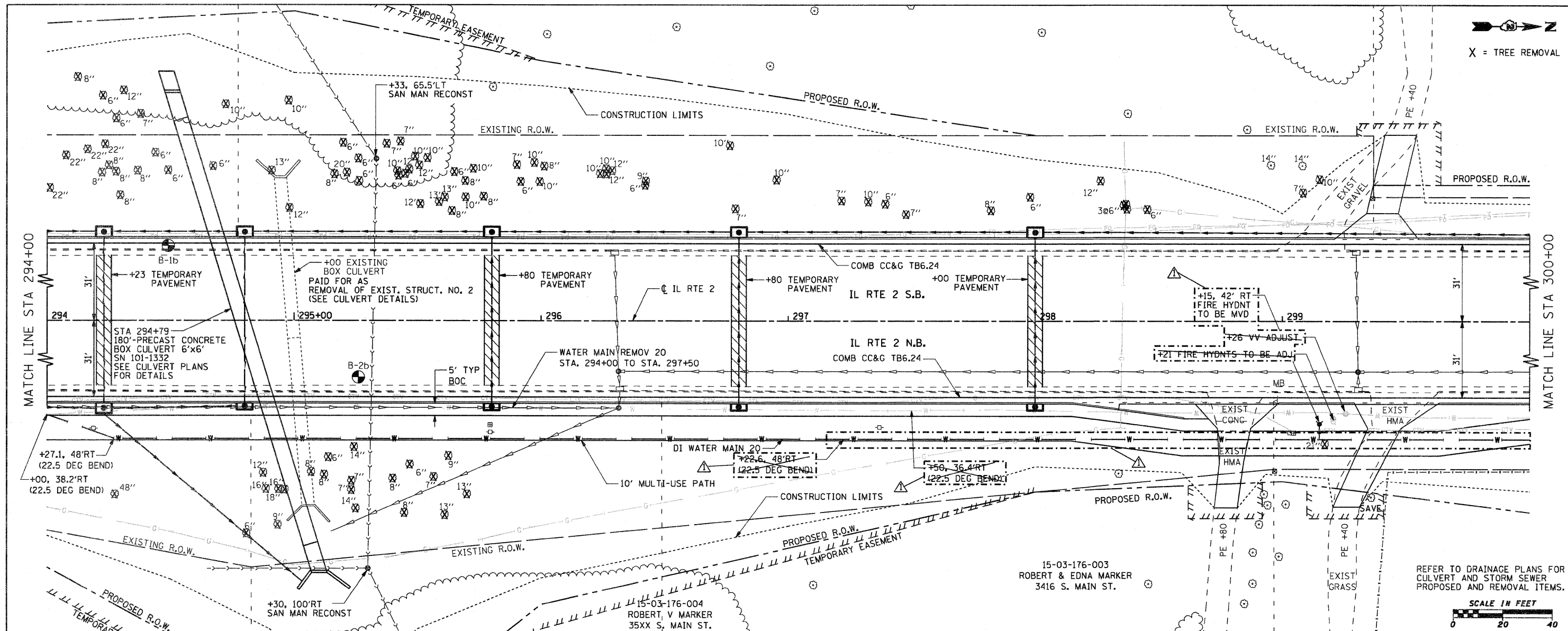


DATE	
BY	
REVISIONS	
NO.	
DESCRIPTION	
DATE	
BY	
REVISIONS	
NO.	
DESCRIPTION	
DATE	
BY	
REVISIONS	
NO.	
DESCRIPTION	

DATE	
BY	
REVISIONS	
NO.	
DESCRIPTION	
DATE	
BY	
REVISIONS	
NO.	
DESCRIPTION	
DATE	
BY	
REVISIONS	
NO.	
DESCRIPTION	



FILE NAME = G:\2010\TRANS\B101\00\GN\Plan and Profile	USER NAME = tamming	DESIGNED - CJS	REVISED - 03/26/2012	<b>STATE OF ILLINOIS DEPARTMENT OF TRANSPORTATION</b>	<b>FAP 742 (IL 2) PLAN AND PROFILE</b>			F.A.P. RTE. 742	SECTION 34R	COUNTY WINNEBAGO	TOTAL SHEETS 491	SHEET NO. 71
PLOT SCALE = 20.0000' / IN.		CHECKED - FJH	REVISED -		SCALE: 1" = 20'	SHEET NO. OF SHEETS	STA. 294+00 TO STA. 300+00	ILLINOIS FED. AID PROJECT				
PLOT DATE = 3/27/2012		DATE -	REVISED -									

REFER TO DRAINAGE PLANS FOR CULVERT AND STORM SEWER PROPOSED AND REMOVAL ITEMS.

