

15-03-151-008
ALLEN & ALICE COX
3321 & 3321 1/2 S. MAIN ST.

15-03-151-007
WILLIAM STICKLES
3311 S. MAIN ST.

15-03-102-014
MAGDALENA KRZYZAK
3231 S. MAIN ST.

15-03-176-002
ROBERT & EDNA MARKER
34XX S. MAIN ST.

15-03-176-001
GEORGE BLAKE
3314 S. MAIN ST.

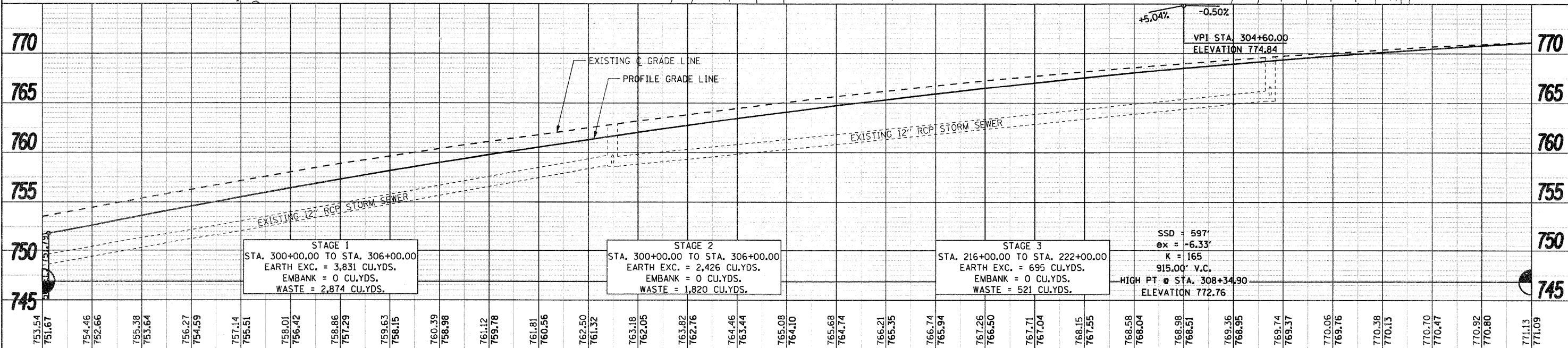
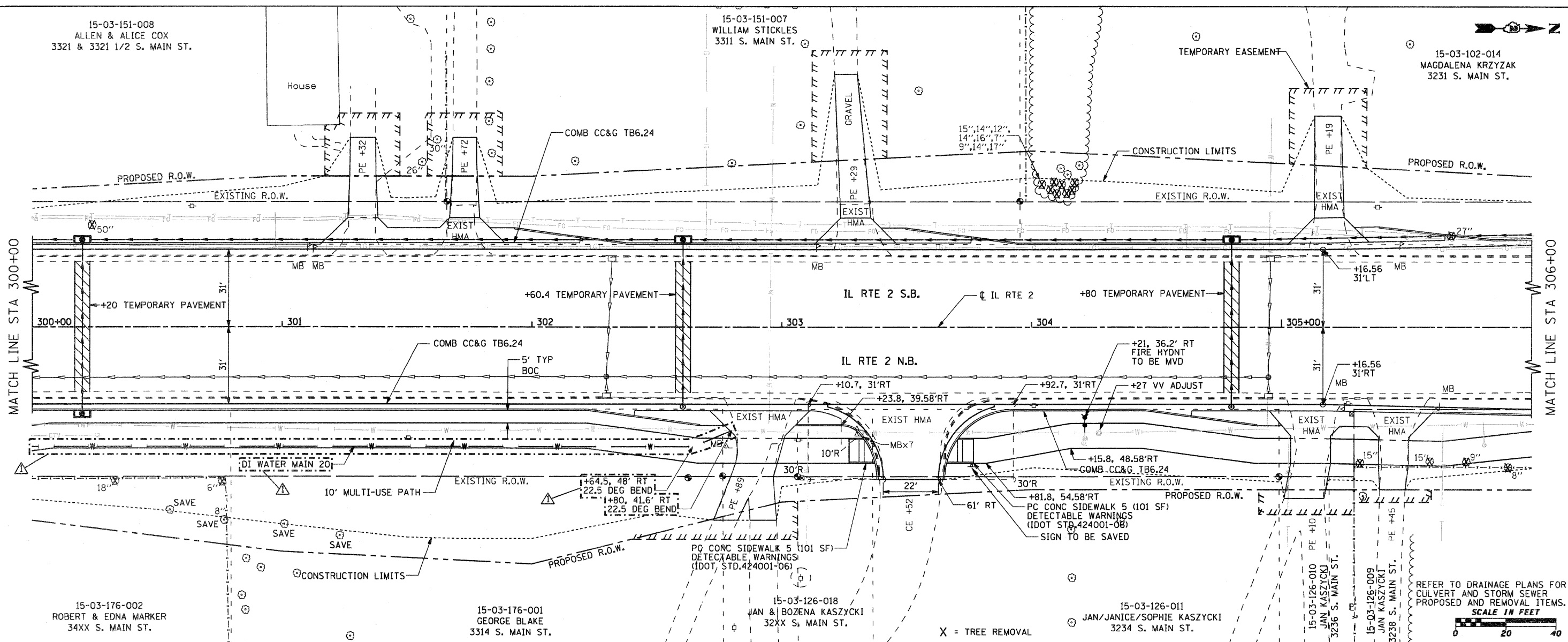
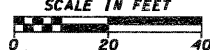
15-03-126-018
JAN & BOZENA KASZYCKI
32XX S. MAIN ST.

15-03-126-011
JAN/JANICE/SOPHIE KASZYCKI
3234 S. MAIN ST.

15-03-126-010
JAN KASZYCKI
3236 S. MAIN ST.

15-03-126-009
JAN KASZYCKI
3238 S. MAIN ST.

REFER TO DRAINAGE PLANS FOR
CULVERT AND STORM SEWER
PROPOSED AND REMOVAL ITEMS.



770	765	760	755	750	745																									
753.54	754.46	755.38	756.27	757.14	758.01	758.86	759.63	760.39	761.12	761.81	762.50	763.18	763.82	764.46	765.08	765.68	766.21	766.74	767.26	767.71	768.15	768.58	768.98	769.36	769.74	770.06	770.38	770.70	770.92	771.13
300+00	300+50	301+00	301+50	302+00	302+50	303+00	303+50	304+00	304+50	305+00	305+50	306+00																		

PLAN	DATE	BY
REVISION		
NOTED		
CHECKED		
APPROVED		

PROFILE	DATE	BY
REVISION		
NOTED		
CHECKED		
APPROVED		

STATE OF ILLINOIS
DEPARTMENT OF TRANSPORTATION

FAP 742 (IL 2)
PLAN AND PROFILE

SCALE: 1" = 20' SHEET NO. OF SHEETS STA. 300+00 TO STA. 306+00

F.A.P. RTE.	SECTION	COUNTY	TOTAL SHEETS	SHEET NO.
742	34R	WINNEBAGO	491	72
CONTRACT NO. 64515				
ILLINOIS FED. AID PROJECT				